

Where ever you go, I go:
But, who are you & what do you do?

NASEM Family Caregiver Workshop
Washington, D.C.
May 16-17, 2022

Jason Karlawish, MD
University of Pennsylvania
Penn Memory Center
Alzheimers Disease Research Center

Caregiving is as old as the Bible....

Naomi said to her two daughters in law, “Go, return each of you to her mother's house: May the Lord deal kindly with you, as you have dealt with the dead, and with me. May the Lord grant you that each of you may find security in the house of her husband.” Then she kissed them; and they raised their voices and wept. And they said to her, “No, we will return with you to your people.” But Naomi replied, “Turn back, my daughters: why should you go with me? Have I any more sons in my womb, that they may be your husbands? Turn back, my daughters, go your way; for I am too old to have a husband. Even if I should say, I have hope, if I should marry tonight, and also bear sons; Would you until they were grown? Should you stay for them and deprive yourselves from having husbands? No, my daughters! My lot is far more bitter than yours, for the hand of the Lord has gone out against me.” And they broke into weeping again: and Orpah kissed her mother in law farewell; but Ruth clung to her. And she said, “See, your sister in law has gone back to her people, and to her gods. Go follow your sister in law.”

But Ruth replied, “Do not urge me to leave you, to turn back and not follow you. For wherever you go, I will go; and where you lodge, I will lodge: your people shall be my people, and your God my God: Where you will die, will I die, and there will I be buried. Thus and more may the Lord do to me if anything but death parts you and me.”

The Book of Ruth. The Old Testament Bible. Chapter 1.



“Ruth Swearing to Naomi,” Jan Vickers, 1653.

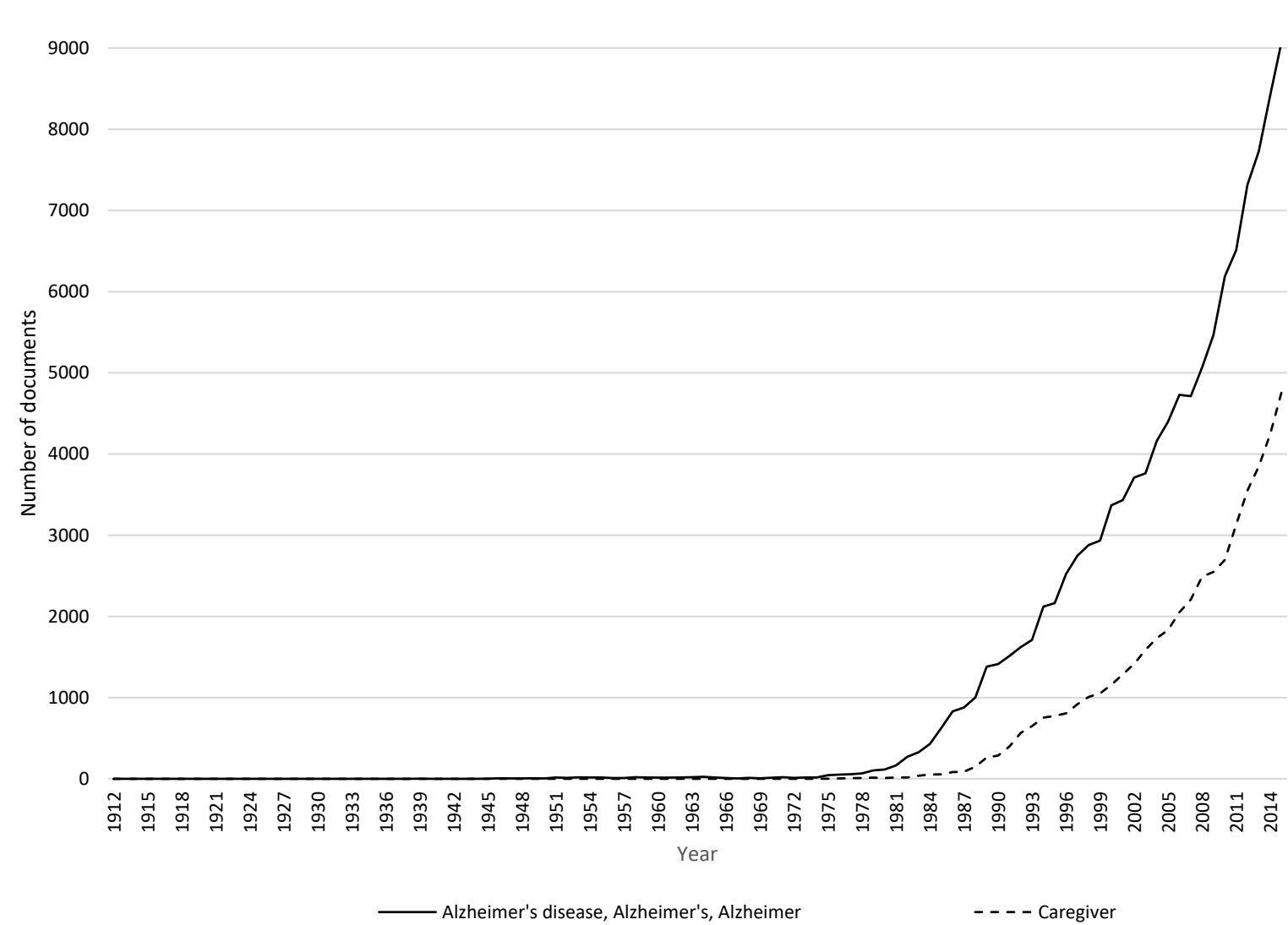
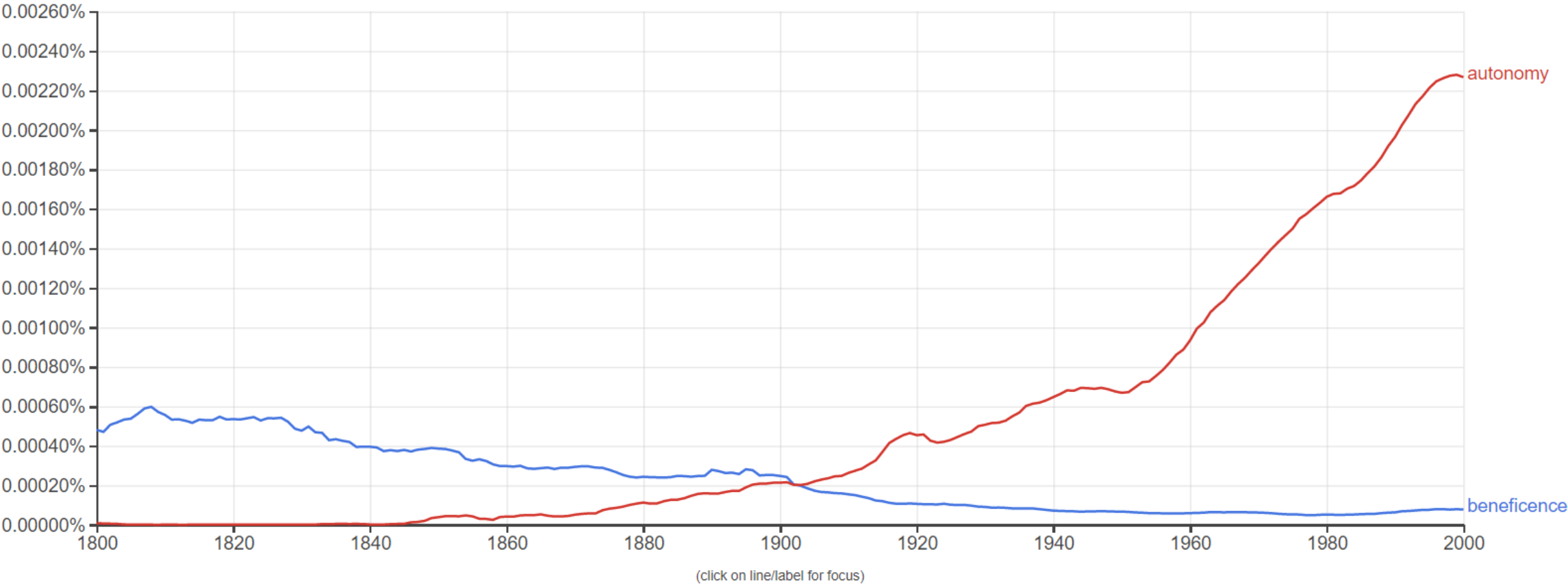


Figure 1.
The plot shows the number of documents published per year that contain terms “Alzheimer’s disease,” “Alzheimer’s,” or “Alzheimer” and “caregiver” as found in database PubMed. Similar results were found in Scopus, Web of Science, and in Google texts.
SOURCE: PubMed [online]. Available at: <http://www.ncbi.nlm.nih.gov/pubmed>. Accessed 5/16/16.

Google Books Ngram Viewer

Graph these comma-separated phrases: ☐ case-insensitive

between and from the corpus with smoothing of [Search lots of books](#)



THE VANISHING MIND

Money Woes Can Be Early Clue to Alzheimer's



Ryan Collier for The New York Times

As Arthur Packel's dementia grew worse, he forgot how to handle money, and his wife, Renee, could not find where it all went.

By GINA KOLATA

Published: October 30, 2010

Renee Packel used to have a typical suburban life. Her husband, Arthur, was a lawyer and also sold [insurance](#). They lived in a town house just outside Philadelphia, and Mrs. Packel took care of their home and family.

One day, it all came crashing down.

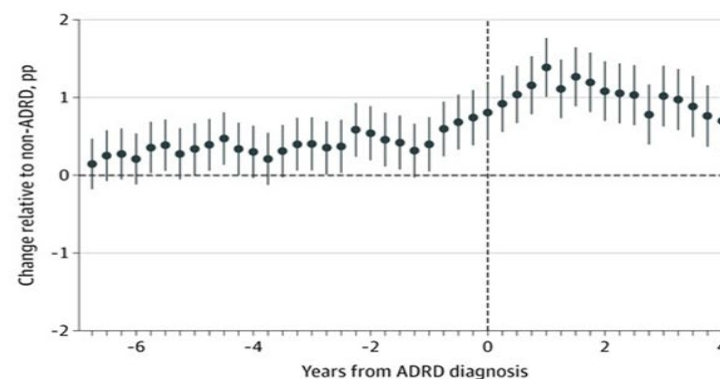


JAMA Network™

Paro the robot seal

From: **Financial Presentation of Alzheimer Disease and Related Dementias**

JAMA Intern Med. Published online November 30, 2020. doi:10.1001/jamainternmed.2020.6432



Change in Proportion With Missed Credit Payments Before and After Alzheimer Disease and Related Dementias (ADRD) Diagnosis Relative to Never Diagnosed, 1999 to 2018 Medicare beneficiaries who eventually developed ARDR experienced higher rates of delinquency than those who never developed ARDR, and these elevated rates were detectable years before diagnosis. Circles are regression coefficients representing the percentage point (pp) increase in payment delinquency at each time point in comparison to payment delinquency rates among Medicare beneficiaries who were never diagnosed with ARDR. The mean rate of missed payment (payment delinquency) was 7.8%. Vertical lines represent 95% CIs. Data sources: Federal Reserve Bank of New York Consumer Credit Panel/Equifax, and Medicare Beneficiary Summary File.



“My roommate the robot”

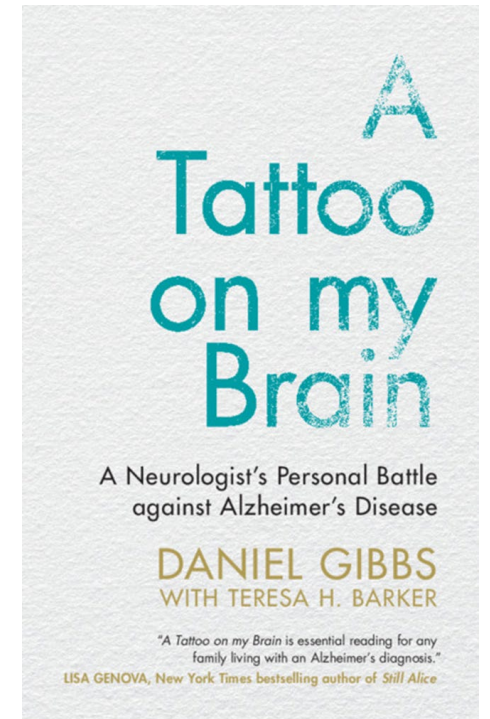


ElliQ is a friendly presence in your daily life. Engaging you in conversation, motivating you to adopt healthier habits, surprising you with jokes and suggestions. Your personal sidekick on the journey to age independently.

ElliQ.com

Who are you & What do you do?

- How does a caregiver differ from a....
 - robot, or a parent, butler, trainer, hairdresser, personal shopper?
- Caregiver as....
 - extended body
 - extended cognition
 - extended mind
 - extended self



The implications.....

- Nomenclature: informal versus formal, family versus non familial, skilled versus unskilled
- “*We* have ... [name of disease].”
- How well, or not, does the system train and support and accommodate caregiver as cognition / mind / self?
 - training such as supported decisionmaking
 - two minds in one body -- care for *both minds*
 - “visitor” policies in hospital and residential LTC
 - time & space at an outpatient visit
 - access to EMR
 - compensation