

Green Heart Louisville Introduction

Ensuring Community-Driven Action at the State and Local Levels

Natasha DeJarnett, PhD, MPH, BCES

Assistant Professor of Medicine

Christina Lee Brown Envirome Institute

University of Louisville

 @DrDeJarnett

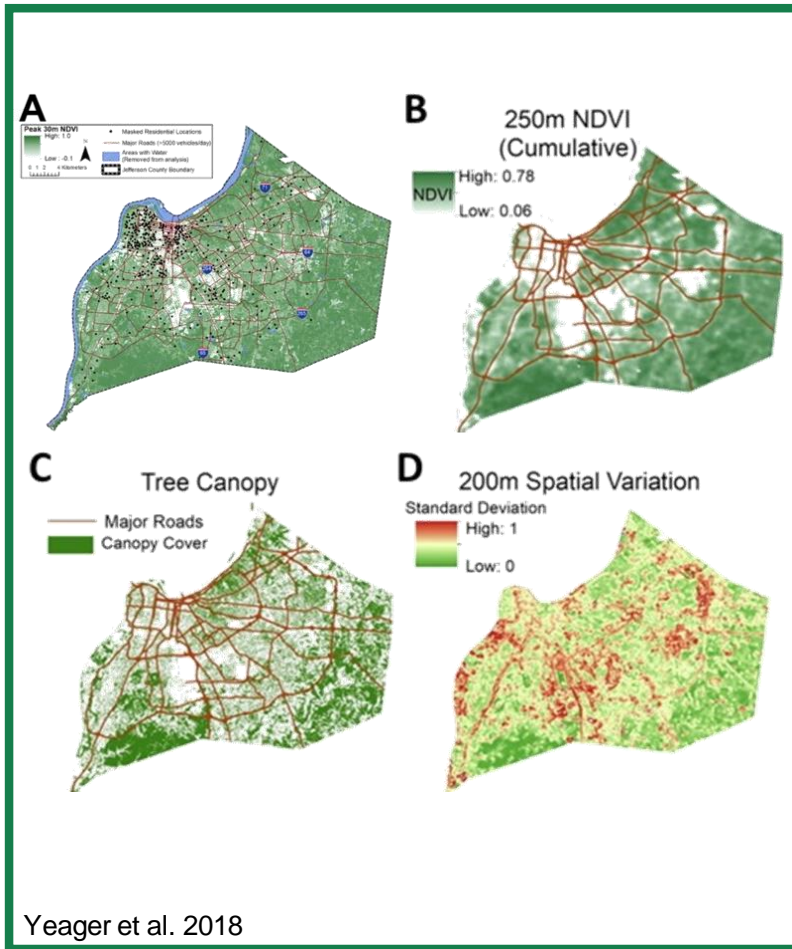
Green Heart Project

Louisville's air quality
ranks among the worst
in Kentucky.

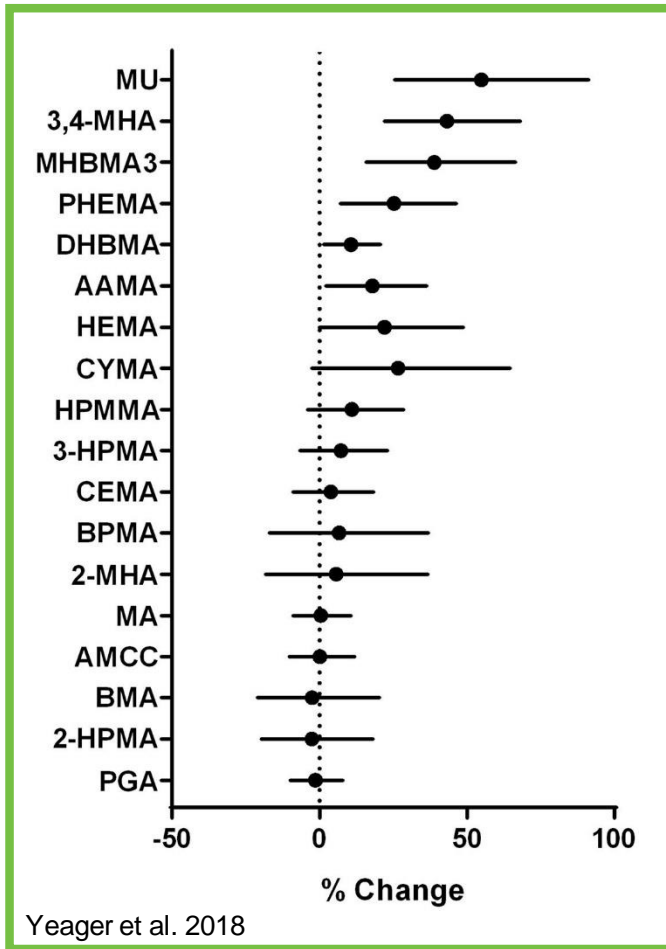
And our current tree
canopy is only 37%.

Greenness, Exposures, and Heart Health in Louisville

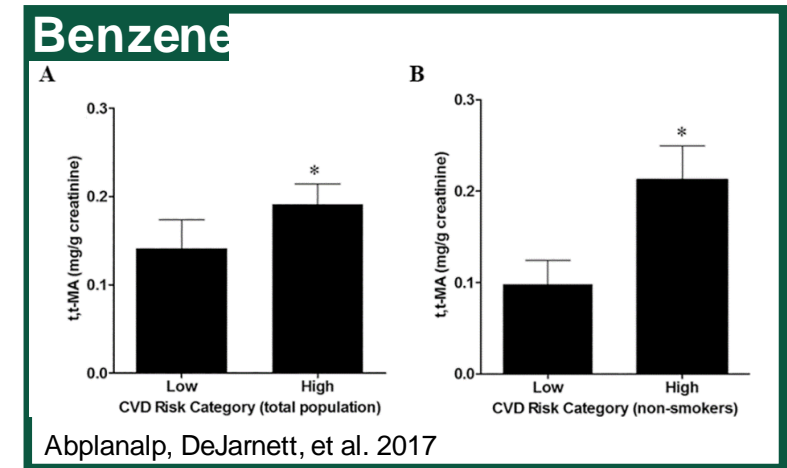
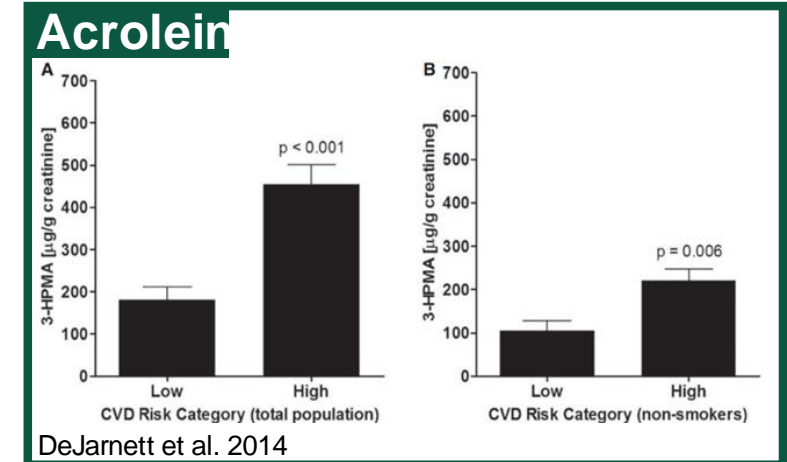
Distribution of Greenness in Louisville, KY



Greenness Inversely Associated with Volatile Organic Compound (VOC) Metabolites



VOC Exposure is Associated with Increased CVD Risk



Meaningful Partnerships



Community Advisory Board

South Louisville residents
Quarterly meetings
Community engagement activities
Participate in Green Heart Louisville events



Community Organizations

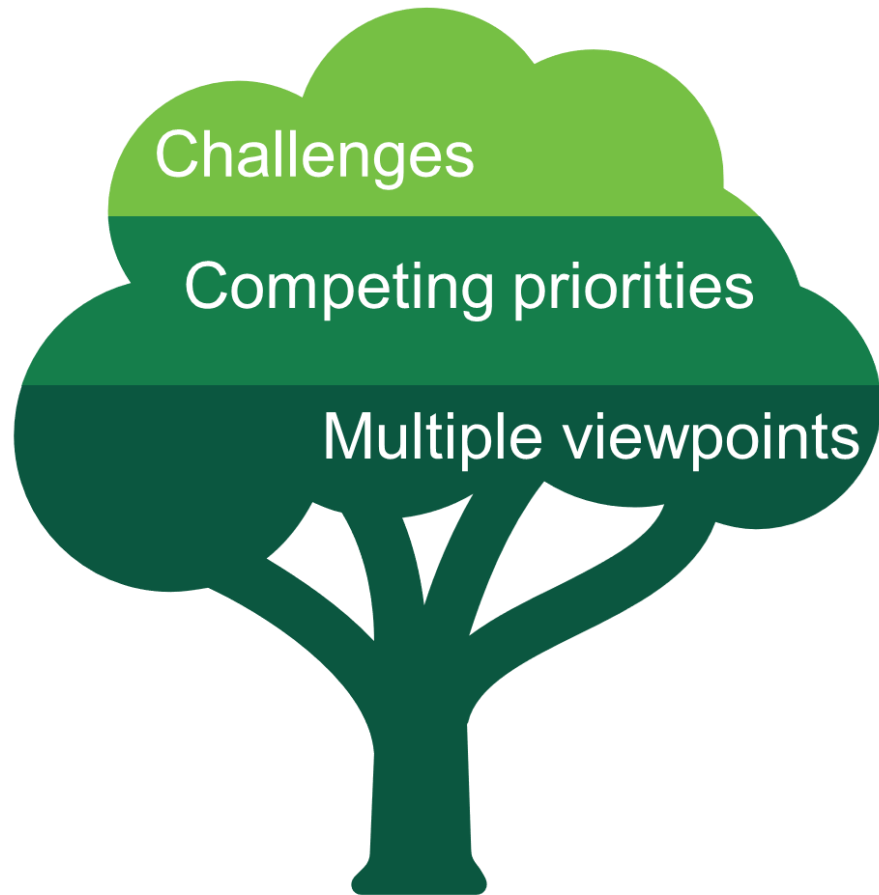
Louisville Grows
Neighborhood associations
Local schools
Faith-based organizations



Activities

Health screenings
Conversation Club
The Canopy Newsletter
Art and Literature Showcase

Lessons Learned and Overcoming Barriers



TREE SELECTION



TREE ASSISTANCE FUND



STRATEGIC PARTNERSHIP

UL CHRISTINA LEE BROWN
ENVIROME INSTITUTE

The Nature
Conservancy

Washington
University in St. Louis

CLEMSON
UNIVERSITY

NC STATE
UNIVERSITY

Partners and
Collaborators

LOUISVILLE
grows

Carl Rapp
LANDSCAPE NURSERY, INC.

MURRAY STATE
UNIVERSITY

ST. LAWRENCE
UNIVERSITY

hyphae design laboratory



JOHNS HOPKINS
UNIVERSITY

STANFORD
UNIVERSITY

Penn
UNIVERSITY of PENNSYLVANIA



U.S. Department of Transportation
Volpe Center

ASU

Supported by:
NIEHS 1R01ES029846
NIEHS 42ES023716
The Nature Conservancy
The Owsley Brown II Family Foundation

Thank You!

This work is supported in part by a grant provided by the National Institute of Environmental Health Sciences (ES029846-04S1).

Community, Study Participants, Volunteers, Collaborators, Stakeholders, Students, Contractors, Funders, and Others



Natasha DeJarnett, PhD, MPH, BCES
Assistant Professor of Medicine
Christina Lee Brown Envirome Institute
University of Louisville
Natasha.DeJarnett@louisville.edu
🐦 @DrDeJarnett

UNIVERSITY OF
LOUISVILLE