

SAN FRANCISCO: A TALE OF TWO CITIES

INSTITUTE ON MEDICINE, ROUNDTABLE ON POPULATION HEALTH IMPROVEMENT

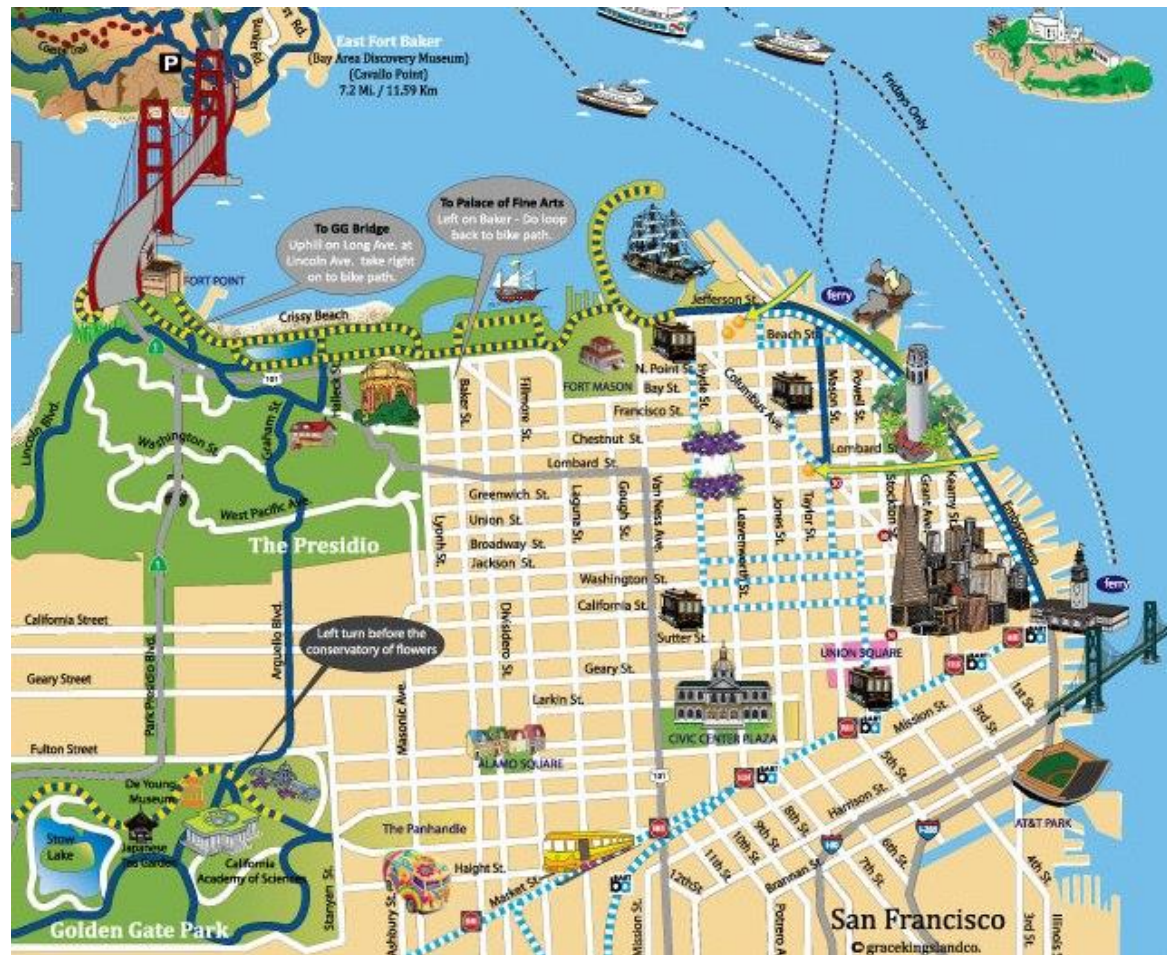
June 4, 2015

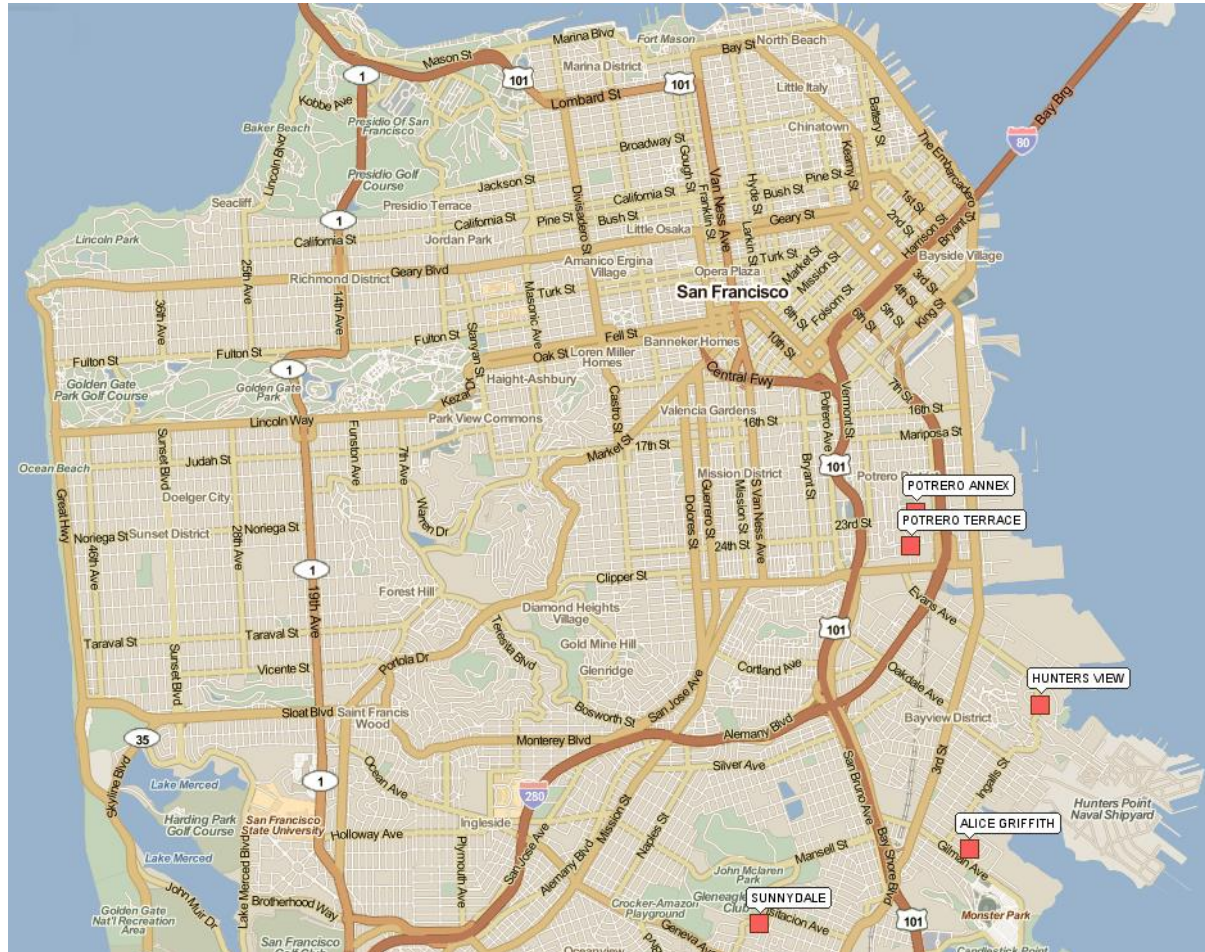


Enterprise Community Partners offers a range of financial products and programs to improve and increase the supply of affordable housing and to revitalize communities. Headquartered in Columbia, Md., Enterprise has offices and an on-the-ground presence across the United States.

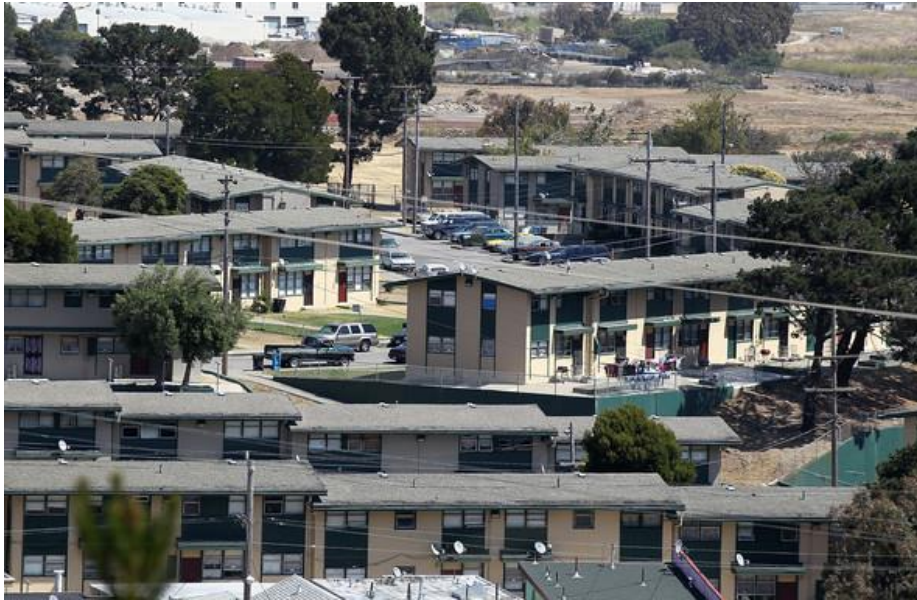
For more than 30 years, Enterprise has introduced solutions through public-private partnerships with financial institutions, governments, community organizations and other partners that share our vision that one day, every person will have an affordable home in a vibrant community, filled with promise and the opportunity for a good life.

www.enterprisecommunity.org





Alice Griffith



Potrero Annex and Terrace



Sunnydale



Hunters View



Average household income less than \$14,000

16-29% REPORT HAVING DIABETES

53%

Chronic Absenteeism

ISOLATION AND TRAUMA

92% unemployment

FEAR

33-50% report high blood pressure

5th-8th grade attainment

25% chronic asthma

VIOLENCE

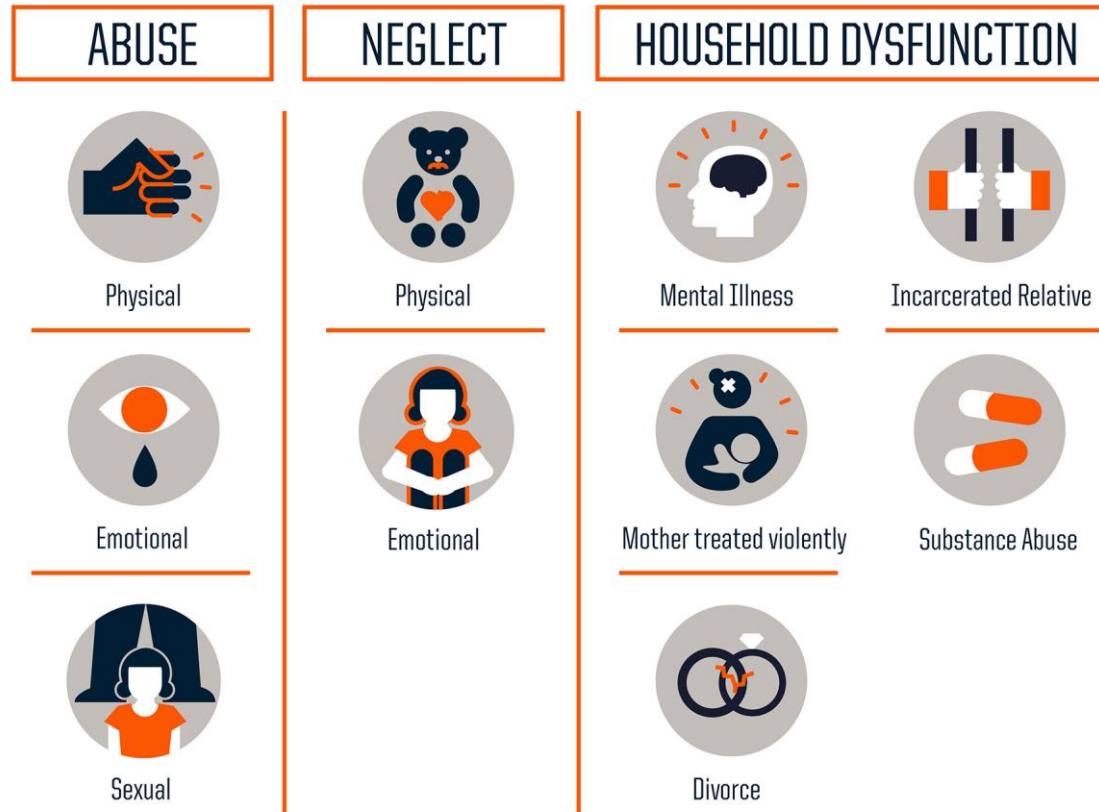
STRESS

Broken promises

- Trauma impacts everything
- Safe, healthy, well-managed affordable housing is a critical lever for change
- Private philanthropy can lead to systems change

- 7 Corners Study
- Community Building + Service Connection, but
 - Lack of trust in community building
 - Service Rich + Service Connection ≠ Success
- Significant Staff Burnout
- Crash Course in Brain Science

Adverse Childhood Experience (ACEs) Test



HOPE SF Responded by:

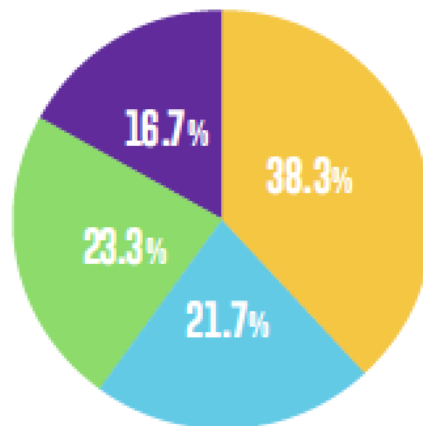
- Training staff
- Training and supporting resident leaders
- Developing health peer leadership program
- Piloting onsite non-stigmatized mental health counseling
- Supporting development of “trauma-informed” community building model to increase readiness

DPH Responded by:

- Developing a plan for a trauma-informed system and trauma-training their entire workforce

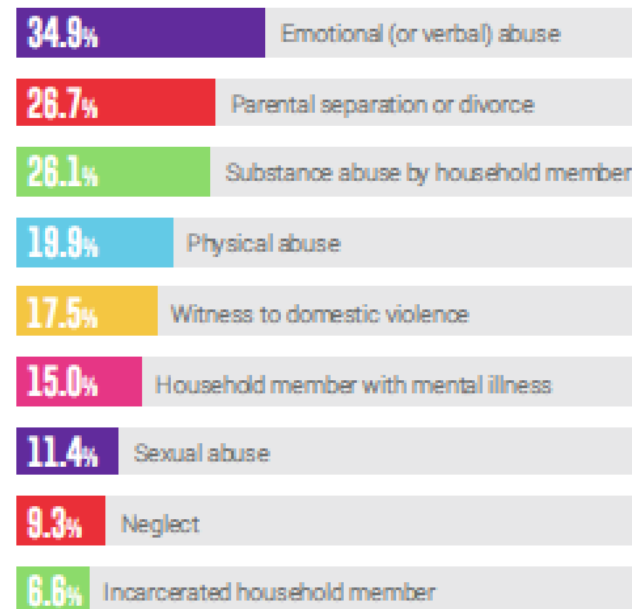
KEY FINDINGS

In California, **61.7%** of adults have experienced at least one ACE and **one in six**, or 16.7%, have experienced four or more ACEs. The most common ACE among California adults is emotional (or verbal) abuse.



Prevalence of number of ACEs among California adults

Most common ACEs among California Adults



Most common ACEs among California adults

Understanding Trauma & Stress

- ☐ trauma is common, but experienced uniquely.
- ☐ chronic or extreme stress has damaging effects.
- ☐ trauma reactions are adaptive, but may impede recovery and wellness.
- ☐ trauma can be overcome through accessible treatments, skills, relationships, and personal practices.

Compassion & Dependability

- ☐ genuine expressions of concern and support create compassionate interactions.
- ☐ mutual respect and attunement create secure and dependable relationships.
- ☐ dependability and trust are created through clear, inclusive, and useful communication

Safety & Stability

- ☐ personal agency supports recovery and overall wellness.
- ☐ skills can be developed to support the effective empowerment of others.
- ☐ opportunities to make decisions and choices that have a meaningful impact on their lives make a difference.

Cultural Humility & Responsiveness

- ☐ specific social and cultural groups may experience, react to, and recover from trauma differently.
- ☐ differences between social and cultural groups need to be taught/learned/valued.
- ☐ providing for unique social and cultural needs of others may need sensitivity.

Resilience & Recovery

- ☐ focus on strengths and clear steps to take toward wellness.

HOUSING IS A CRITICAL LEVER FOR CHANGE

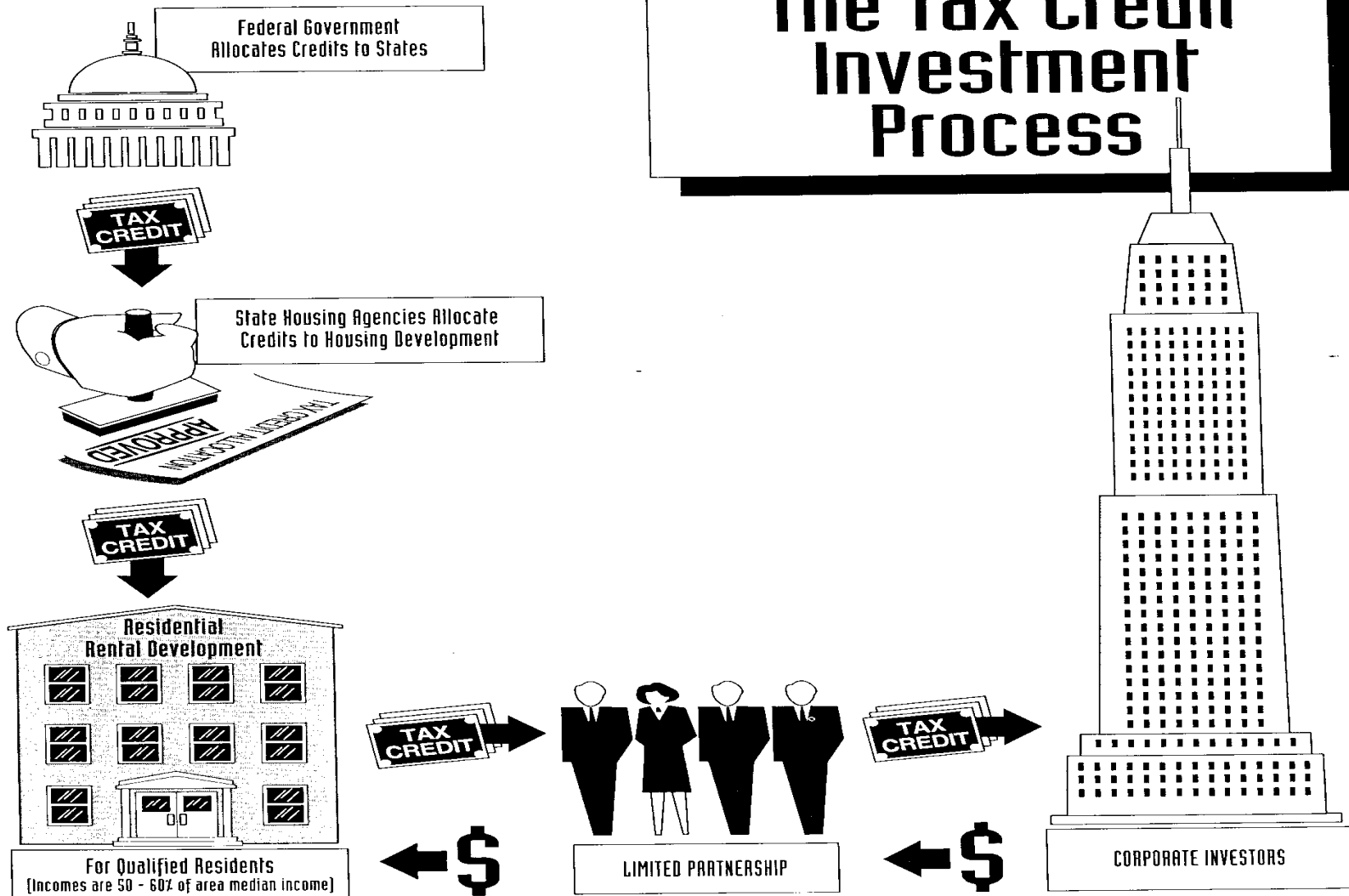
Before



After



The Tax Credit Investment Process





- Win-win: 10 year tax credit and 2.5 million apartments since 1986/ over 100,000 per year
- Rigorous state oversight to ensure units are affordable for at least 30 years (many permanently so)
- Private sector has a stake in making these apartments work to continue to claim tax credits
- Rental homes benefit from private-sector discipline in ways that other programs have not

- Led by The San Francisco Foundation, Enterprise, and the City, the Partnership for HOPE SF is a public-private partnership that takes an integrated approach to address generational
- Over \$11,000,000 in private sector funding has been committed to support HOPE SF. The largest donor has been Kaiser, who committed \$3,000,000 over the next three years
- Programs funded by the Partnership foster resident leadership and are implemented across all four sites:
 - The Peer Health Leadership Program
 - The Onsite Project-Based Employment Program
 - Educational Engagement and School Attendance Program
- The Partnership also funds research, strategy development and evaluation

- How to Make (Mental) Health Services Relevant?
 - Private dollars funded research on non-stigmatized mental health and the impact of peer leadership programs
 - Peer Health Leadership Program implemented and paired with On-Site Wellness Center
 - With the Kaiser grant:
 - health strategies, including oversight of peers will be transitioned from community-based organizations to DPH
 - a health organization will be identified as an intermediary
 - Health and Wellness Centers expanded to all four sites
 - Partner with City College to certify Peer Health Leaders through Community Health Worker program
- Next up: Aligning City Services through Little 5/Big 5 Pilot



www.EnterpriseCommunity.org | www.EnterpriseCommunity.com