

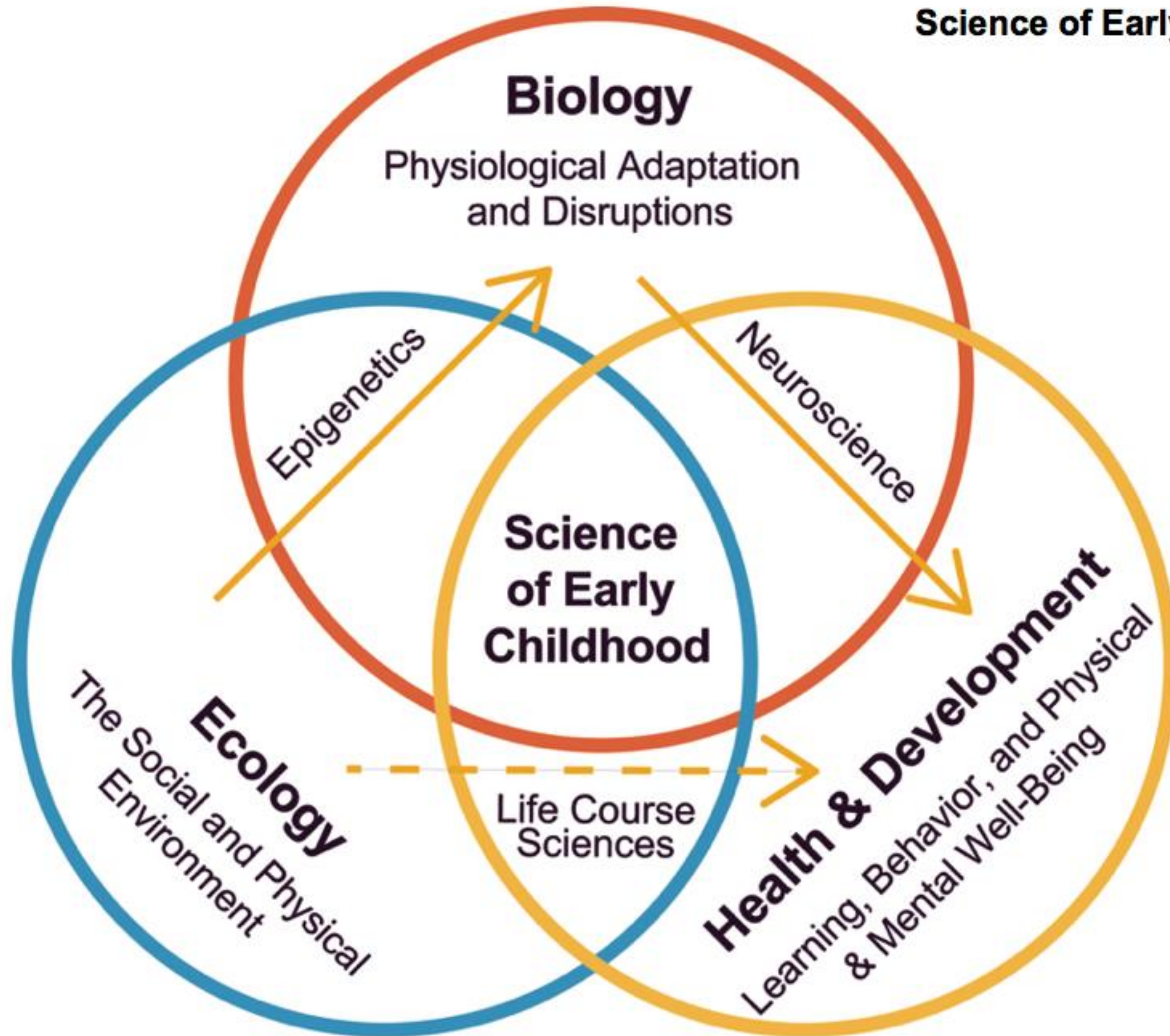
## **Laurie Miller Brotman, PhD**

Bezos Family Foundation Professor of Early Childhood Development  
Center for Early Childhood Health and Development  
Department of Population Health  
NYU Langone Medical Center



center for early childhood  
health and development





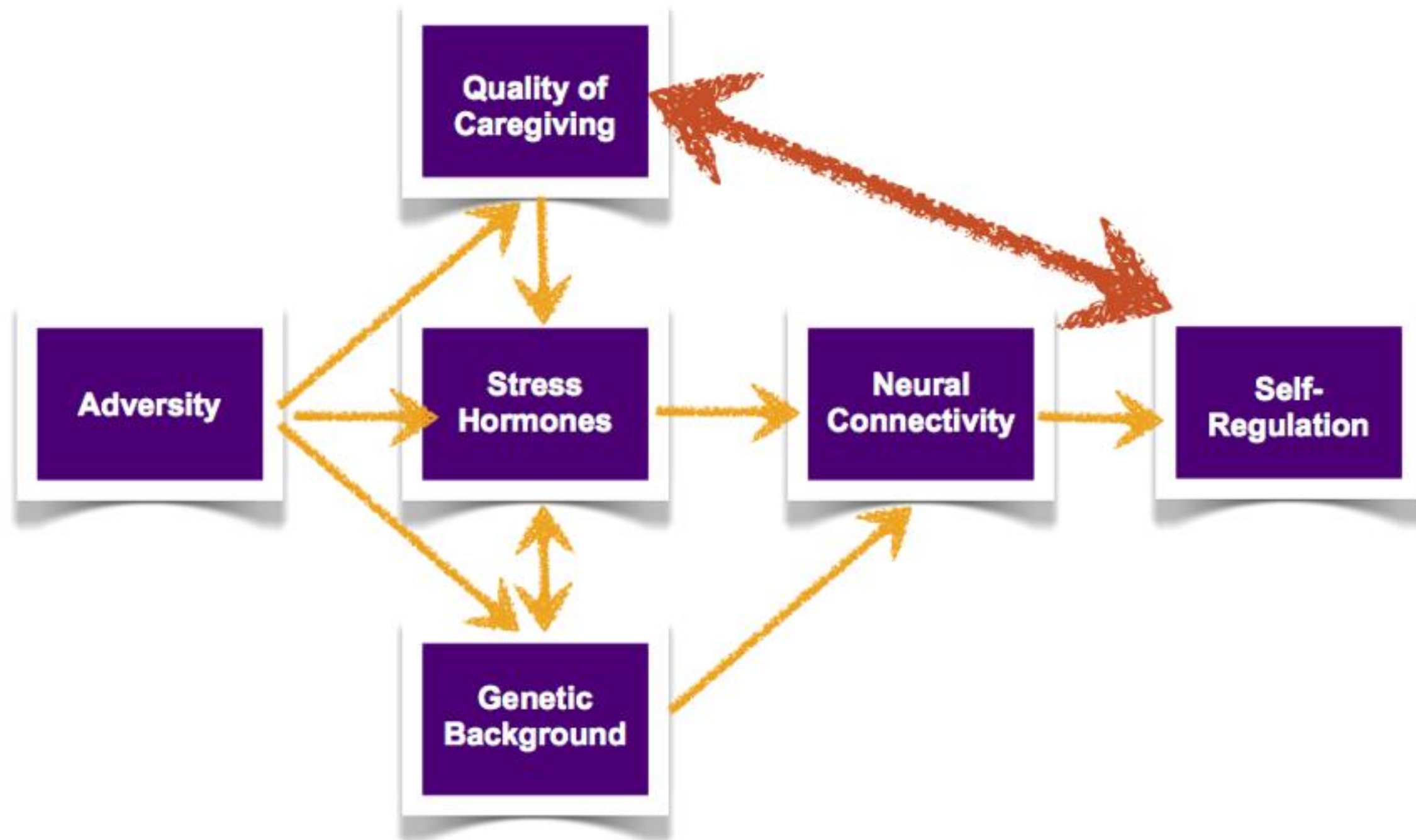
## Child Development in the Context of Socioeconomic Adversity



- **Nearly half of American children under 5 live in “poor” or “near poor” families**
- **Poverty is associated with negative outcomes across all key domains of child development**



## Socioeconomic Adversity and Self-Regulation



## Developmental Cascade



**Socioeconomic  
Adversity**

**PREVENTIVE  
INTERVENTION**

**Community**

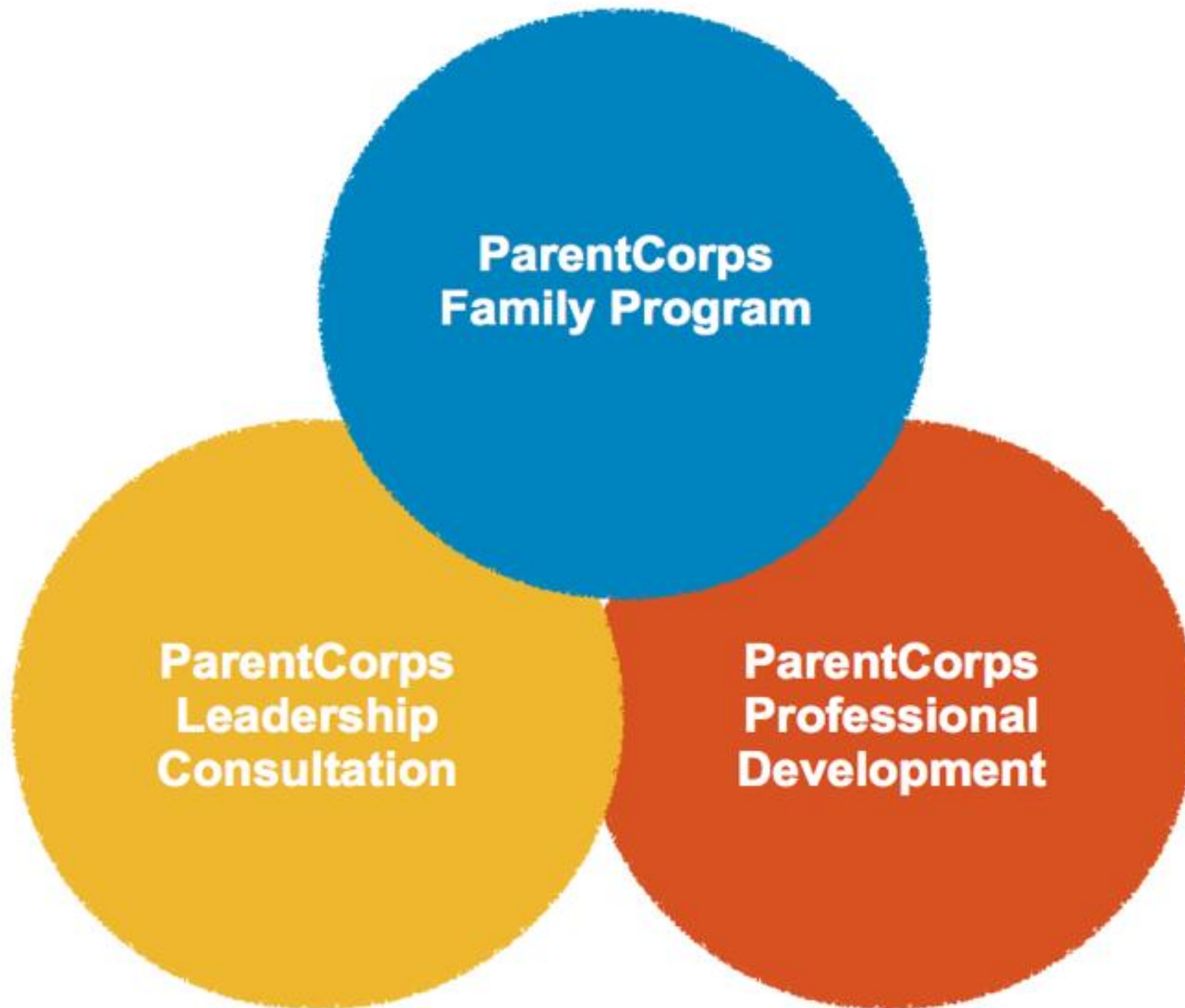
**School**

**Family**

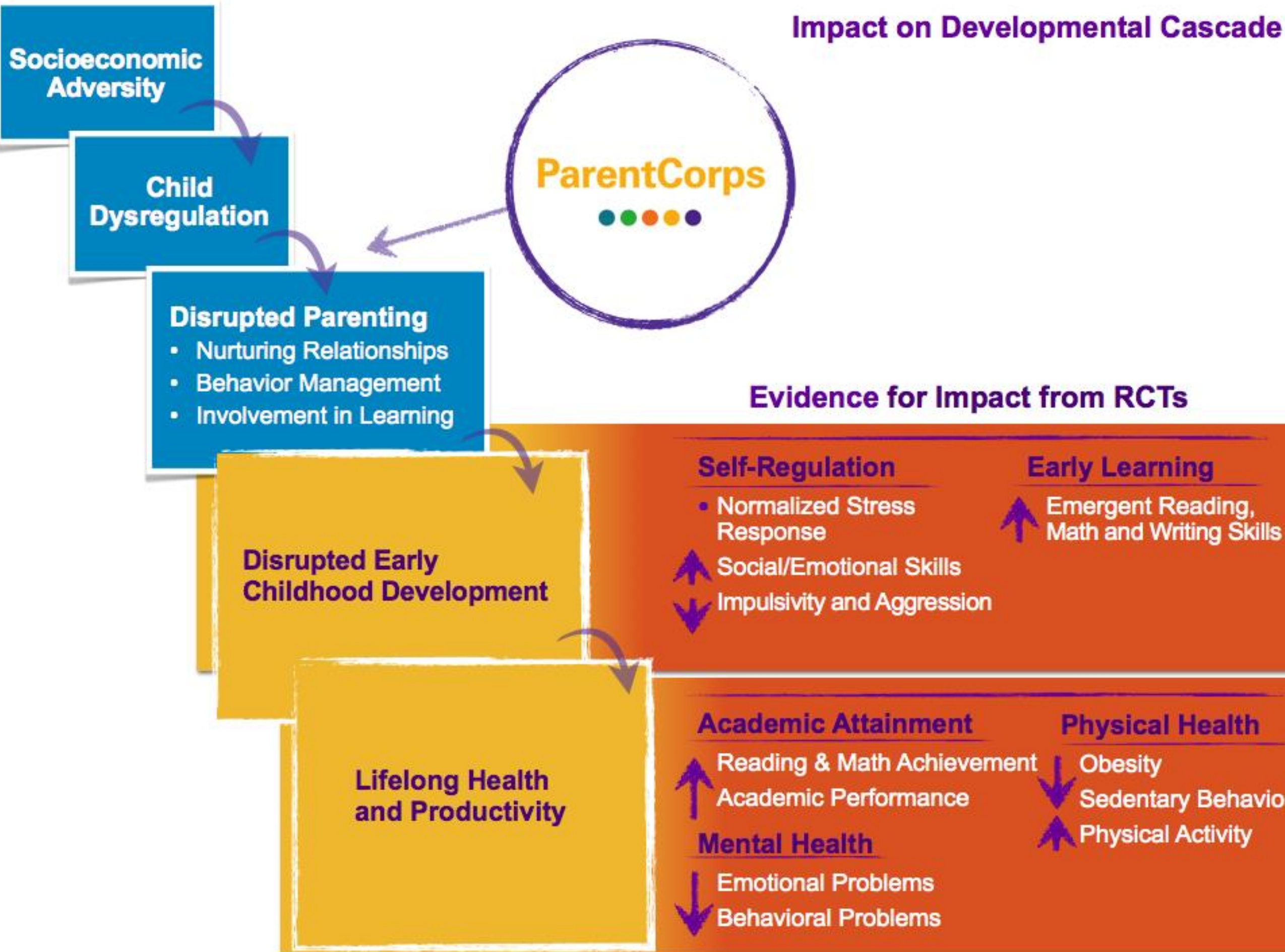


**ParentCorps**





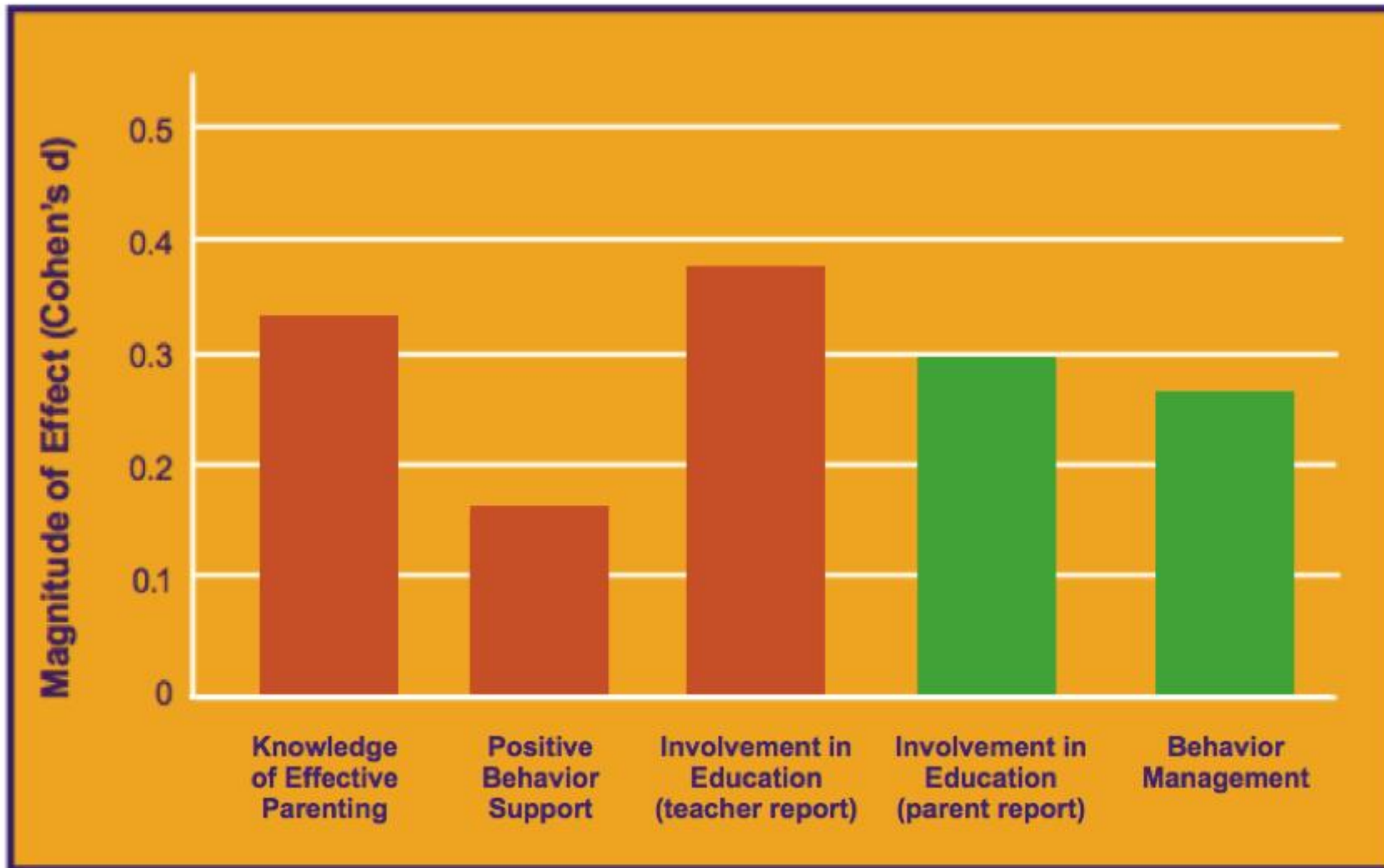






## ParentCorps Impact on Parenting

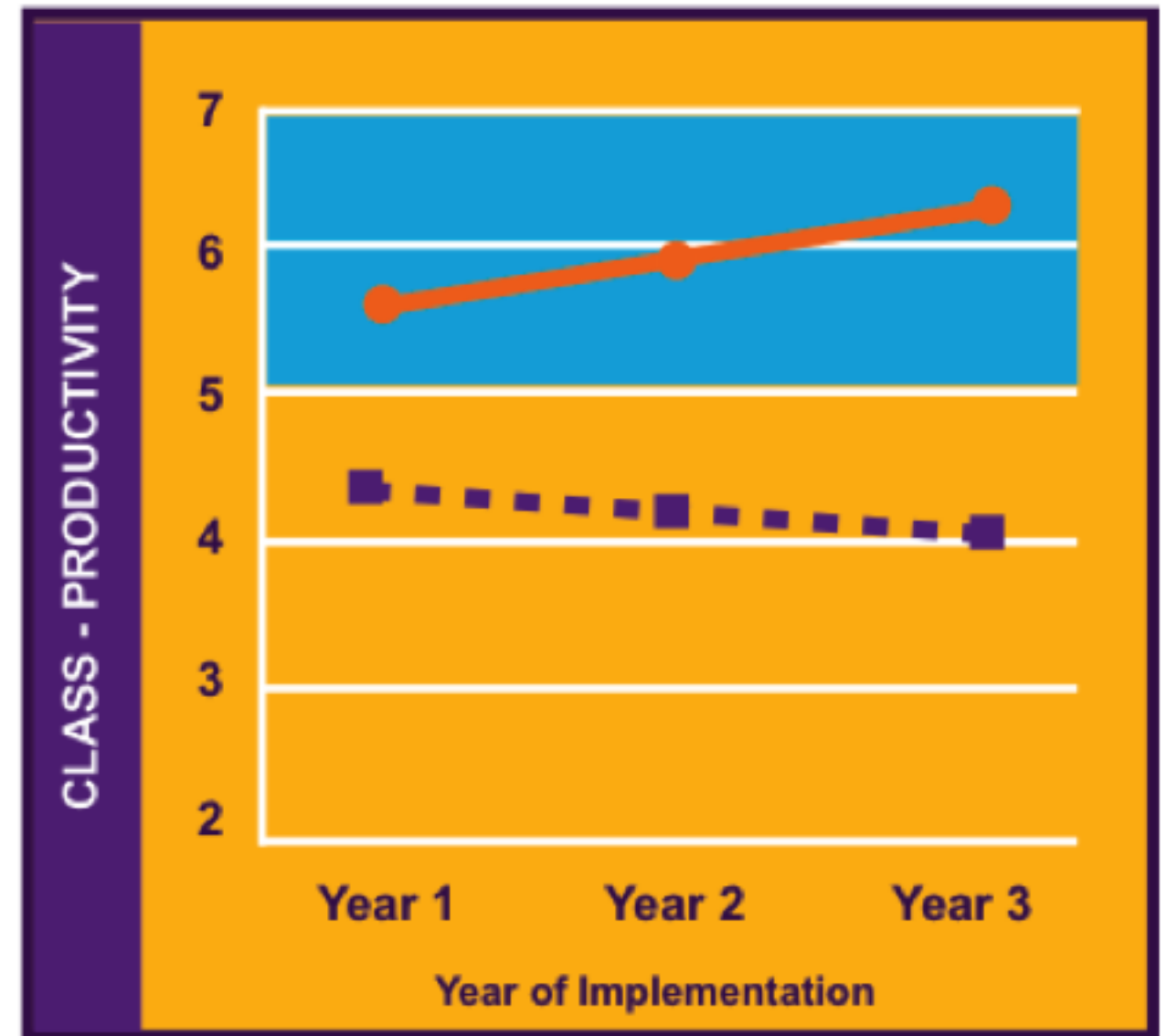
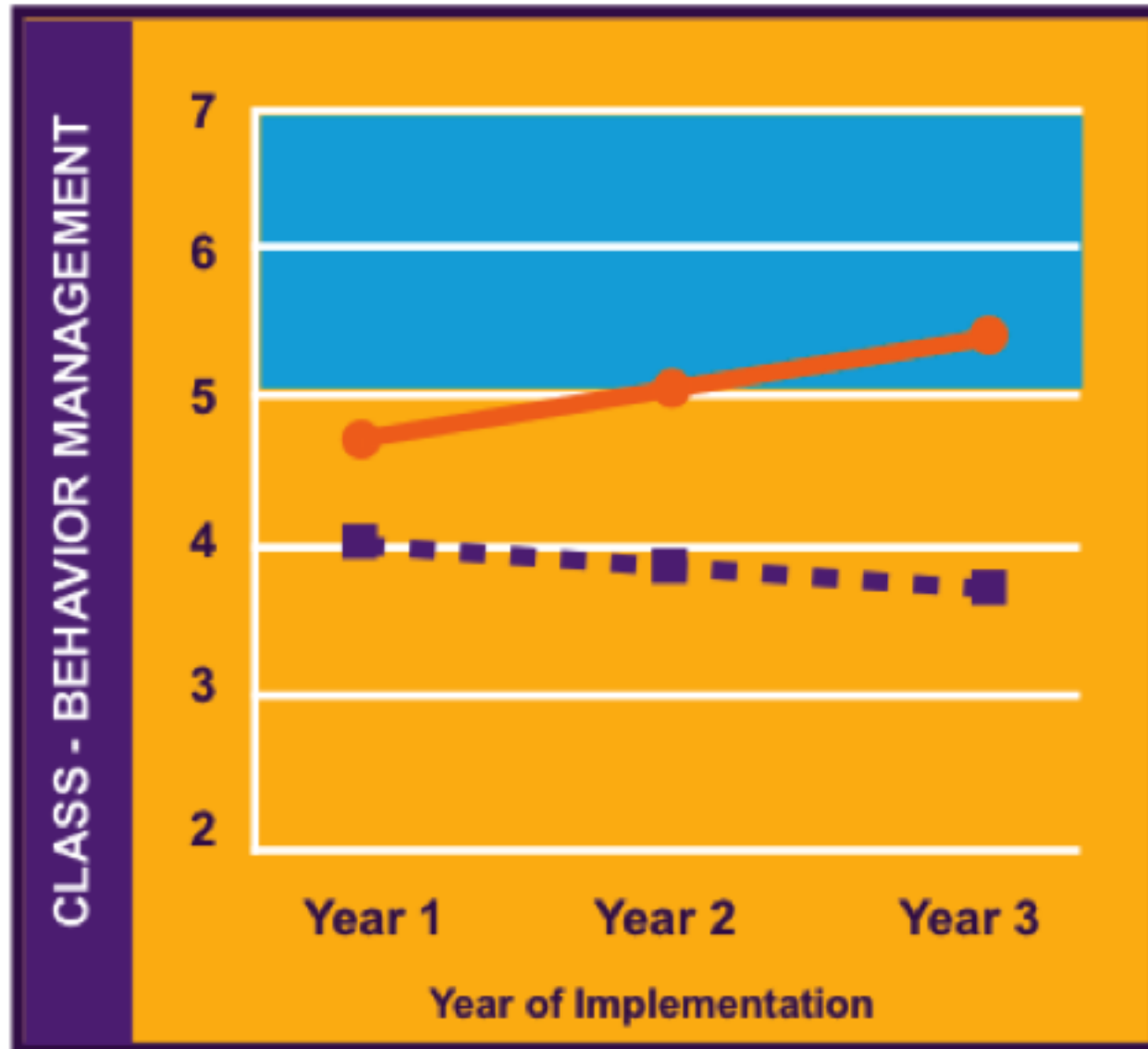
Sustained from Pre-K through Kindergarten



Impact for parents of all pre-k students regardless of program participation (intent-to-treat)

High-risk

## ParentCorps Impact on Pre-K Classroom Quality



**Sustained Parent Involvement**

- Teacher Ratings

**Sustained Academic Performance**

- Reading and Math Achievement Test Scores
- Teacher Ratings of Performance and Problems

**Mental Health**

- Teacher Ratings of Behavioral Problems
- Teacher Ratings of Emotional Problems

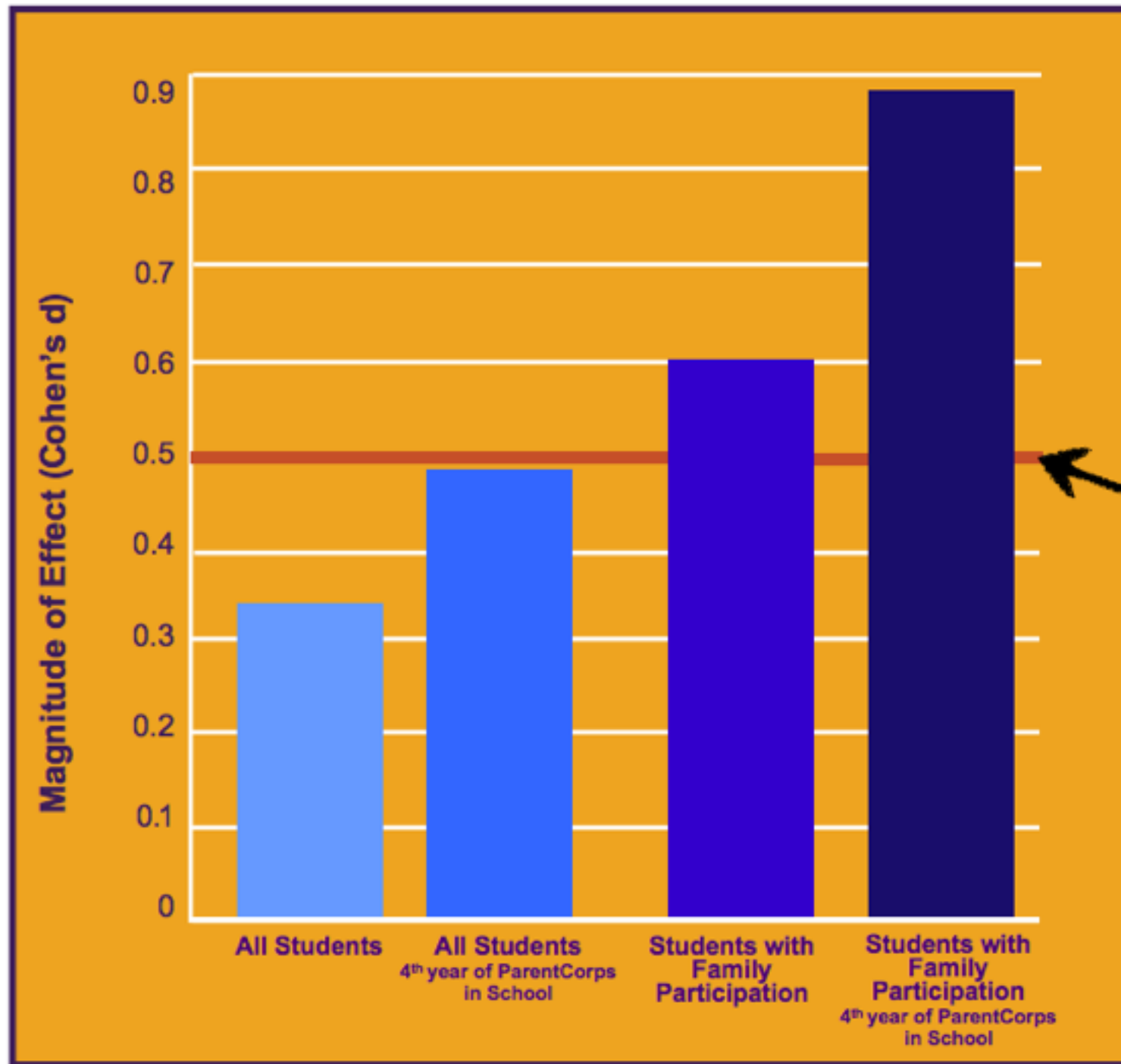
**Physical Health**

*For those with low self-regulation at age 4:*

- Obesity (BMI  $\geq$  95<sup>th</sup> percentile)
- Sedentary Activity (girls), Physical Activity (boys)



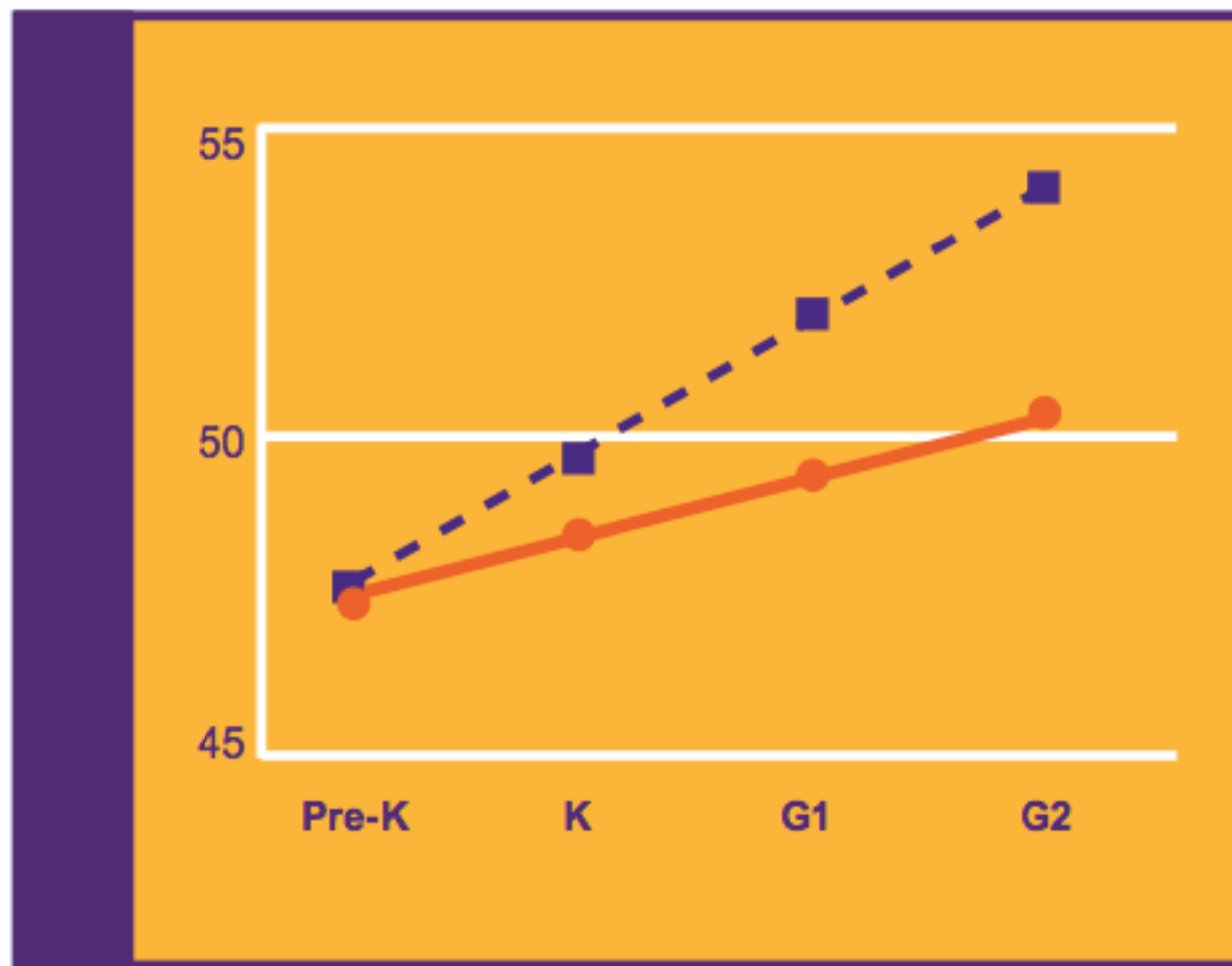
## ParentCorps Impact on Reading Achievement



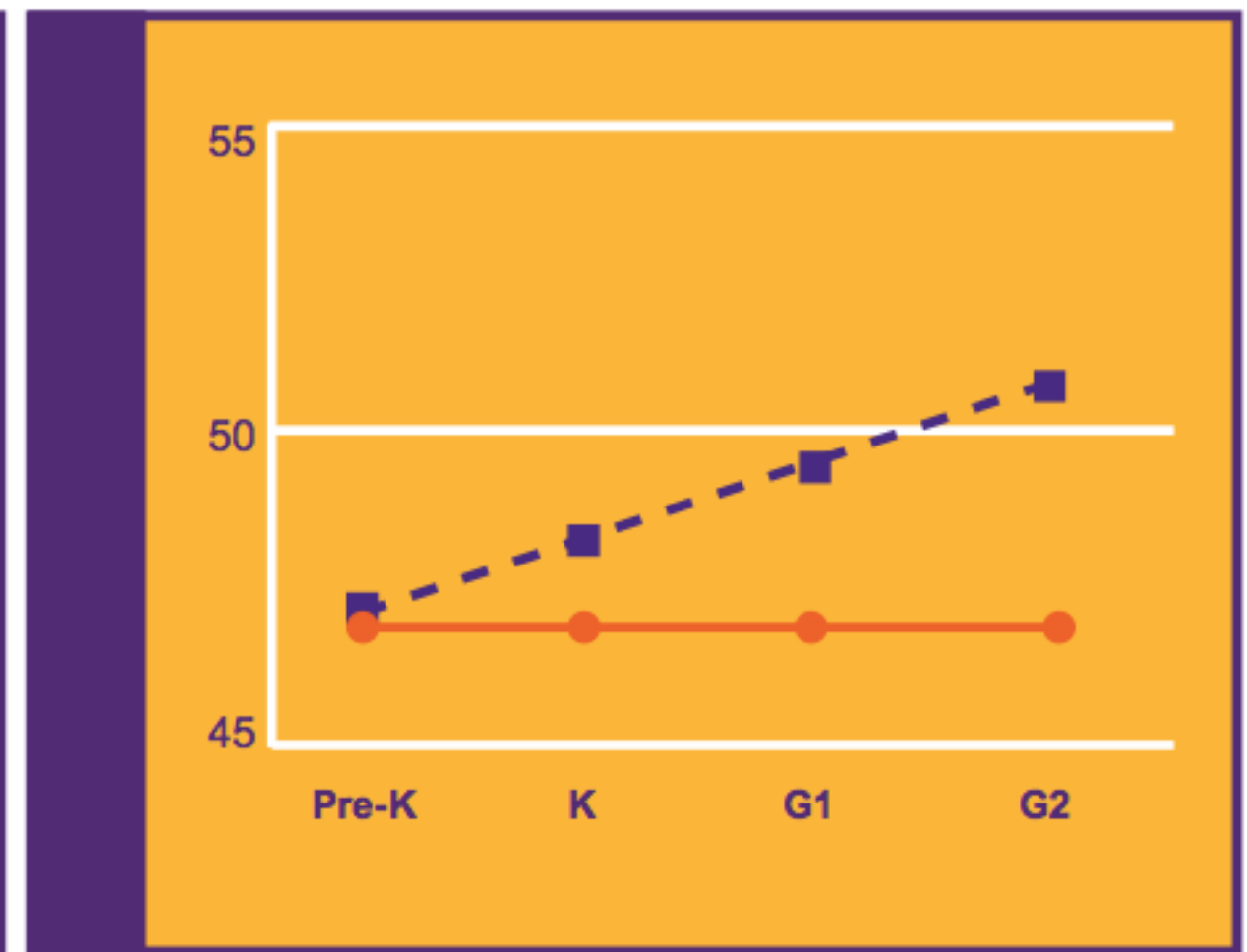
Black-White  
Achievement Gap  
Reading

# ParentCorps Impact on Teacher-Rated Mental Health Problems: Pre-K to Second Grade (age 8)

## Behavioral Problems

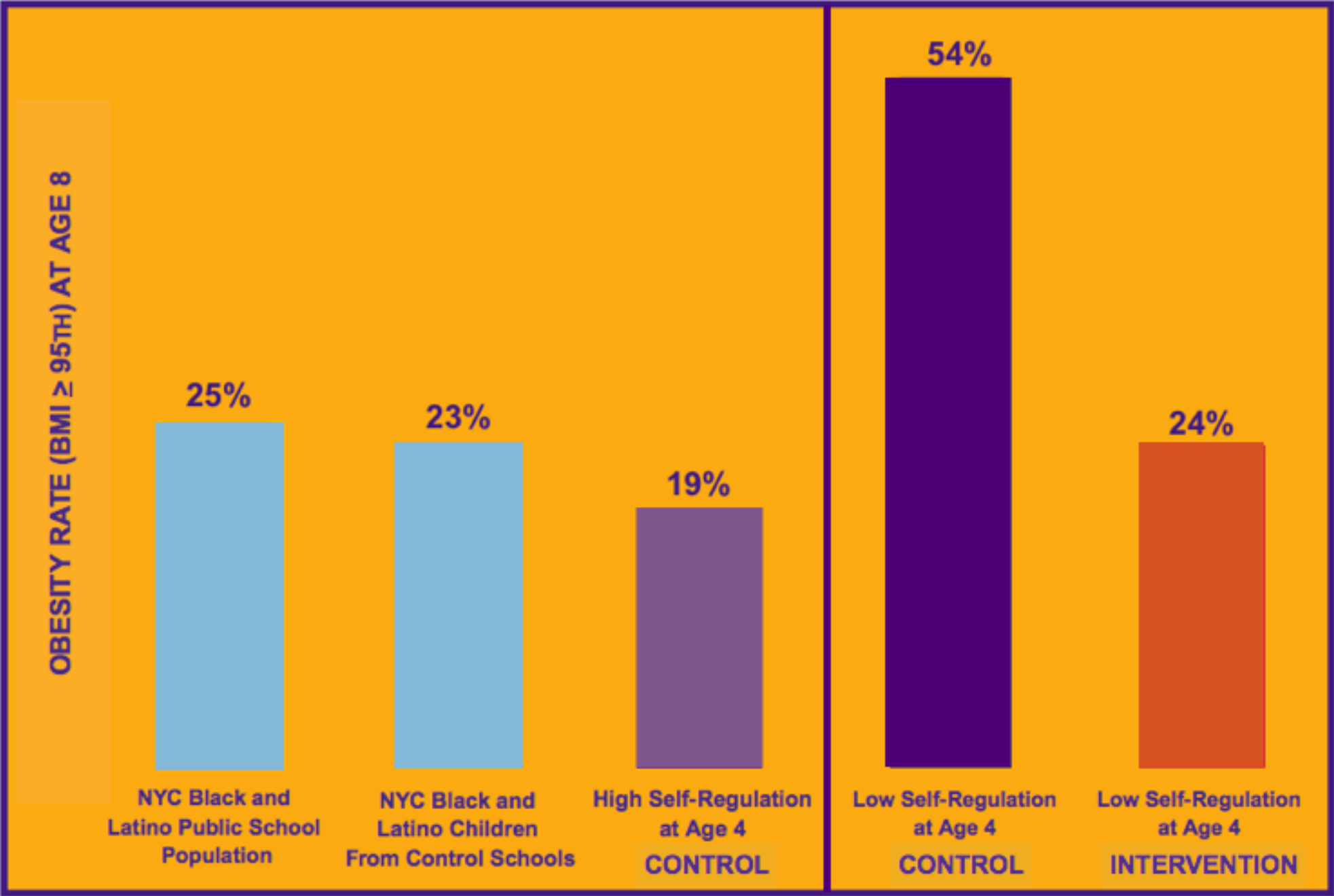


## Emotional Problems



■ - - CONTROL  
● — INTERVENTION

ParentCorps Impact on Obesity at Age 8





# ParentCorps



**A population-level approach to buffer the adverse effects of poverty on early childhood health and development by engaging and supporting both parents and teachers of young children.**

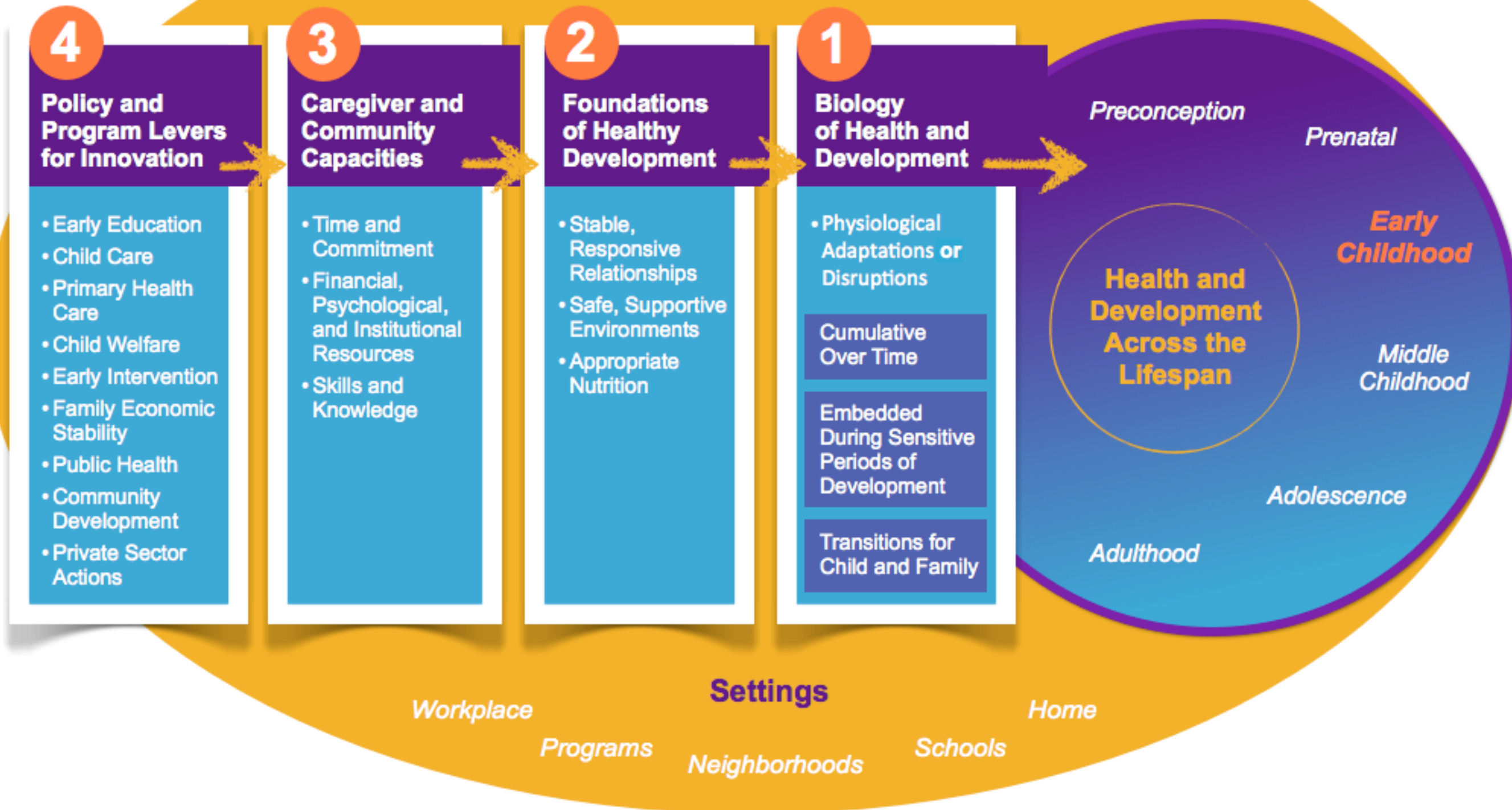
- For all children in early childhood or childcare settings
- Family-centered program developed to be relevant and engaging for all families in disadvantaged neighborhoods, with recognition of the full breadth of diversity found in urban areas



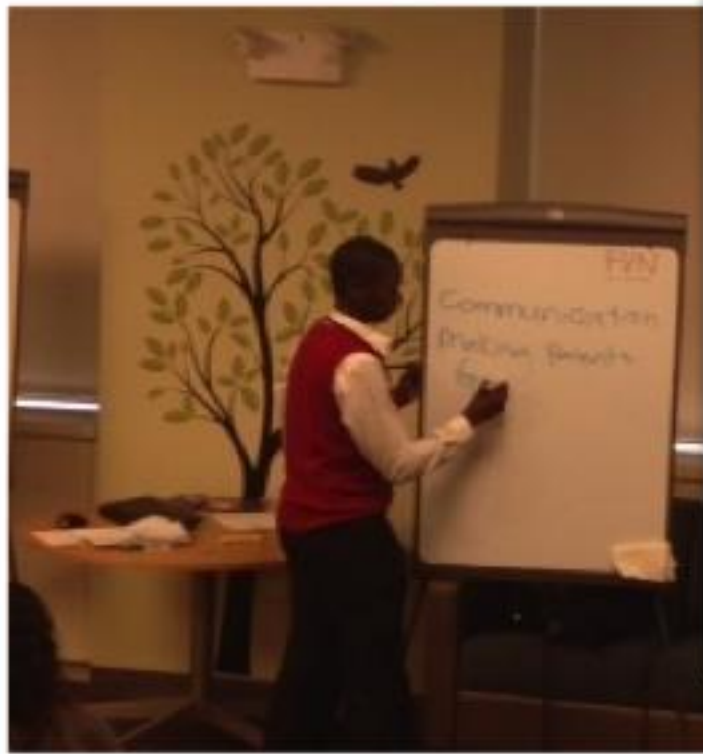
## Phases of Program Implementation Research



# An Ecobiodevelopmental Framework for Early Childhood Policies and Programs







## ParentCorps Academy



P LAY

A CCEPT

R EAD

E NUOY

N URTURE

T EACH

C OACH

O RGANIZE

R EINFORCE

P LAN

S UPPORT



Magnet &  
Bookmark



ParentCorps

Ignoring Mild  
Misbehavior

Stay strong

Breathe

Hang in there

Things will get better

All kids have bad days

Don't give in now

Keep your eye  
on the prize

When you are done  
with the game, don't forget to  
show positive behavior.

Guide

ParentCorps



ParentCorps



The Songs and Sounds of ParentCorps

Music  
CD

A Guide for Parents of Young Children





ParentCorps





# ParentCorps



Brotman, L.M., Calzada, E., Kingston, S., Huang, K., Dawson-McClure, S.R., Kamboukos, D., Rosenfelt, A., Schwab, A., & Petkova, E. (2011). Promoting effective parenting practices and preventing conduct problems among ethnic minority families from low-income, urban communities. ***Child Development***, 82(1), 258-276.

Brotman, L. M., Dawson-McClure, S.R., Huang, K. Y., Theise, R., Kamboukos, D., Wang, J., Petkova, E., & Ogedegbe, G. (2012). Family intervention in early childhood and long-term obesity prevention among high risk minority youth. ***Pediatrics***, 129, e621-e628.

Brotman, L. M., Dawson-McClure, S.R., Calzada, E. J., Huang, K. Y., Kamboukos, D., Palamar, J., & Petkova, E. (2013). A cluster (school) RCT of ParentCorps: Impact on kindergarten academic achievement. ***Pediatrics***, 131, e1521-1529.

Dawson-McClure, S.R., Calzada, E.J., Huang, K.Y., Kamboukos, D., Rhule, D., Kolawole, B., Petkova, E., & Brotman, L.M. (2014). A population-level approach to promoting healthy child development and school success in low-income urban neighborhoods: Impact on parenting and child conduct problems. ***Prevention Science***, Epub ahead of print.

Dawson-McClure, S.R., Brotman, L.M., Theise, R., Palamar, J., Kamboukos, D., Barajas, G., & Calzada, E. (2014). Early childhood obesity prevention in low-income, urban communities. ***Journal of Prevention & Intervention in the Community***, 42 (2), 152-166.

# ParentCorps



[pophealth.med.nyu.edu/divisions/cehd](http://pophealth.med.nyu.edu/divisions/cehd)



center for early childhood  
health and development

