



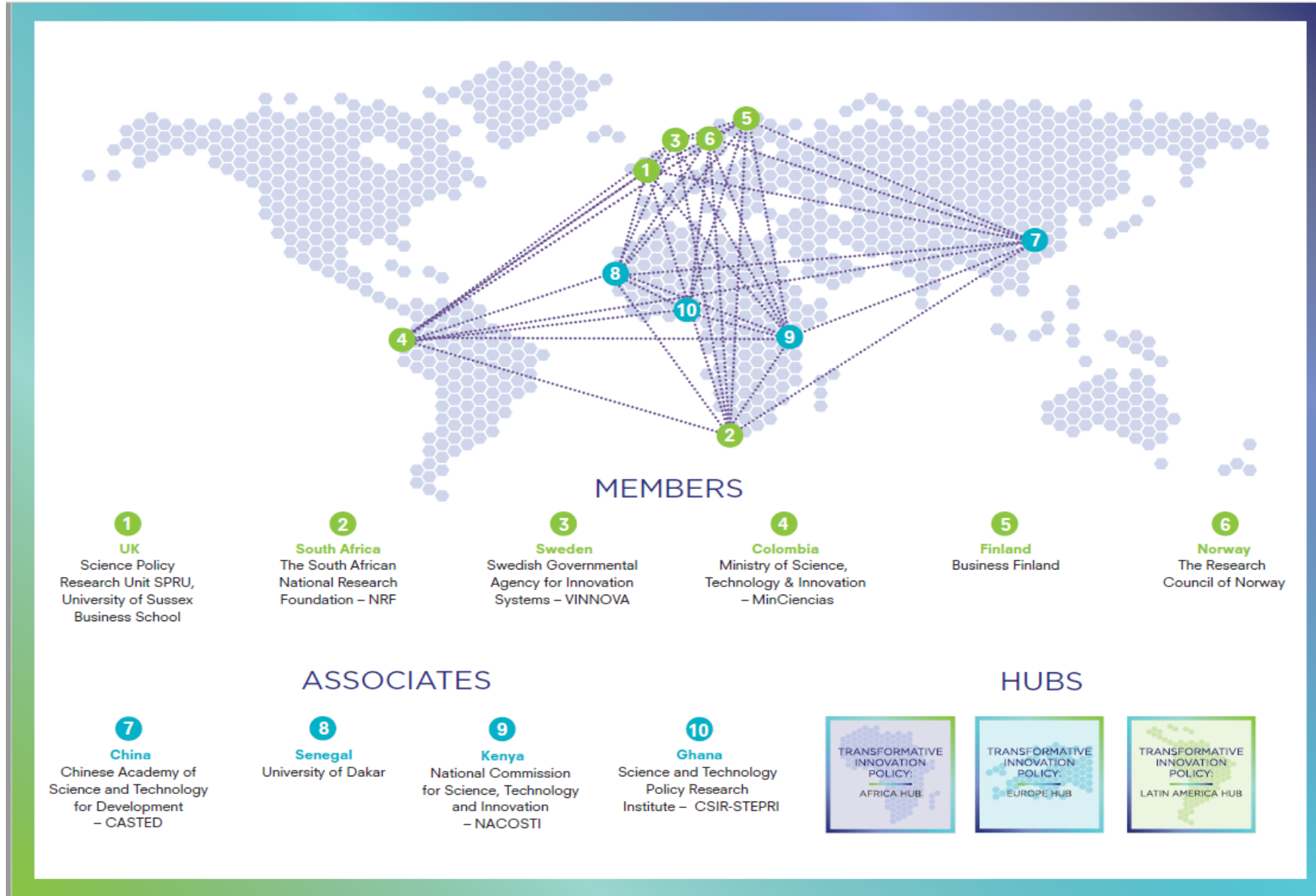
Comparing Innovation Cultures: Insights from Africa and Policy Implications

Chux Daniels, PhD

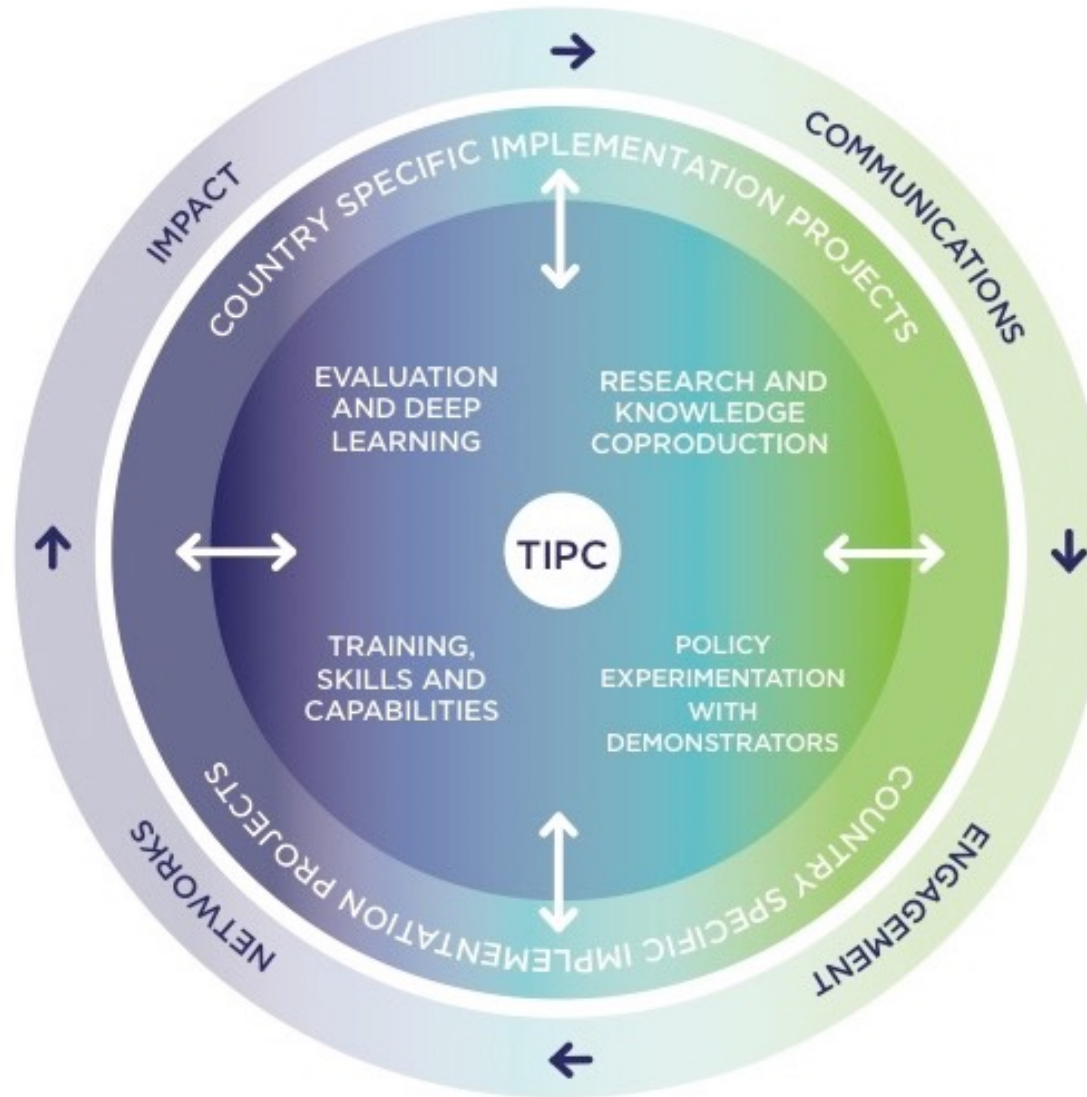
Director, Transformative Innovation Africa Hub (TIAH), University of Pretoria, South Africa; Research Fellow, University of Sussex, UK

GUIRR Meeting: Interpreting the Axioms of Innovation
National Academies of Sciences, Engineering and Medicine, Washington DC, USA
14 June 2023

Transformative Innovation Policy Consortium (TIPC)



TIPC 5 Year Programme (2018-2022)



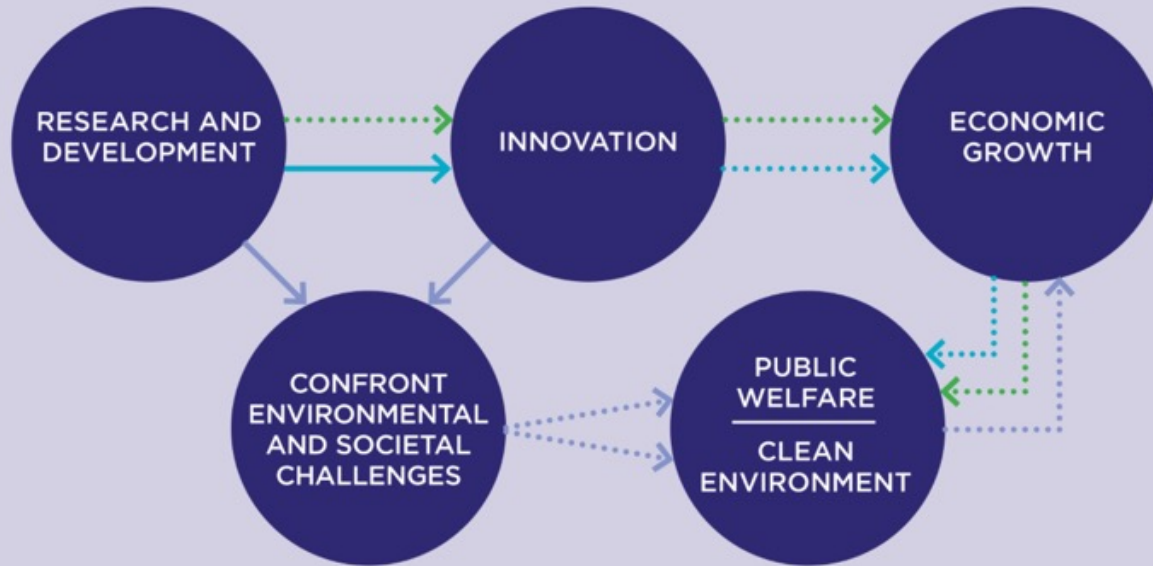
What does TIAH and TIPC want to accomplish?

- 1 New narratives around transformative innovation policy – focus on SDGs
- 2 A set of demonstrators – how to approach, implement and evaluate transformative innovation policy
- 3 A network of people and organizations working from transformative perspectives across the Globe
- 4 Established process of co-creation, with core program and in-country work

Three Frames of Innovation Policy



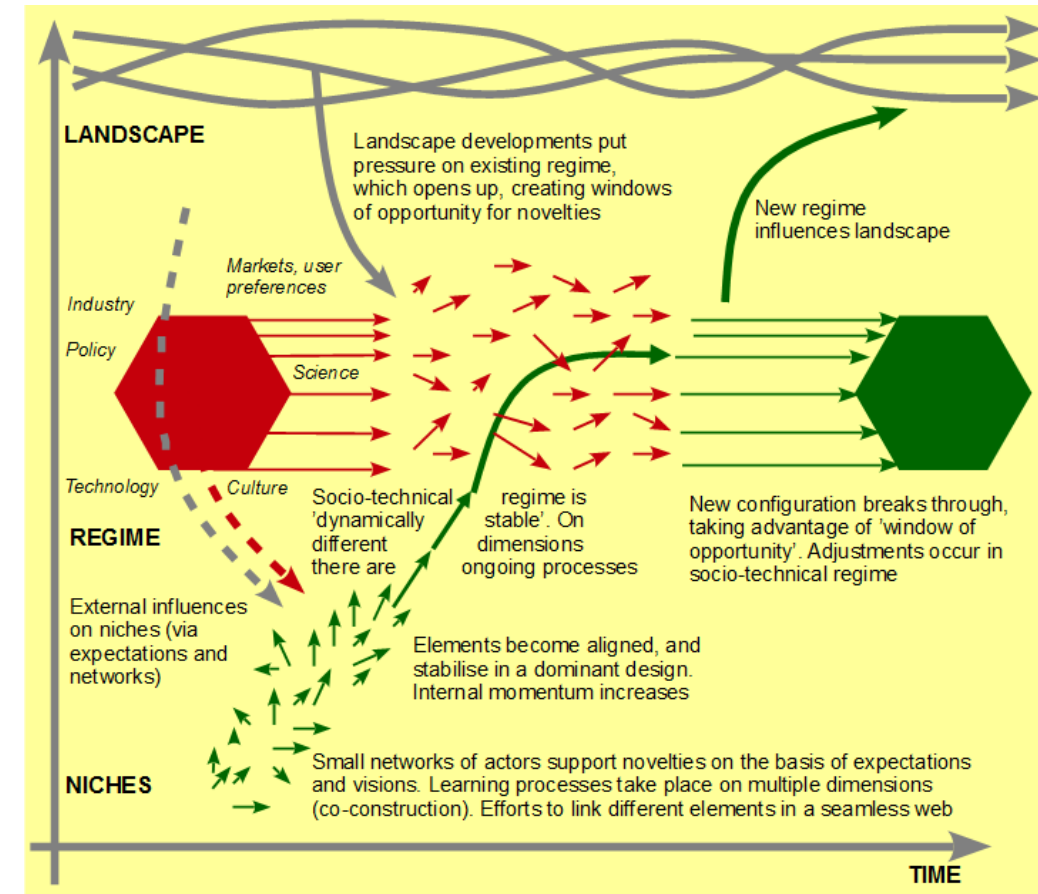
Conceptual and Theoretical Frameworks



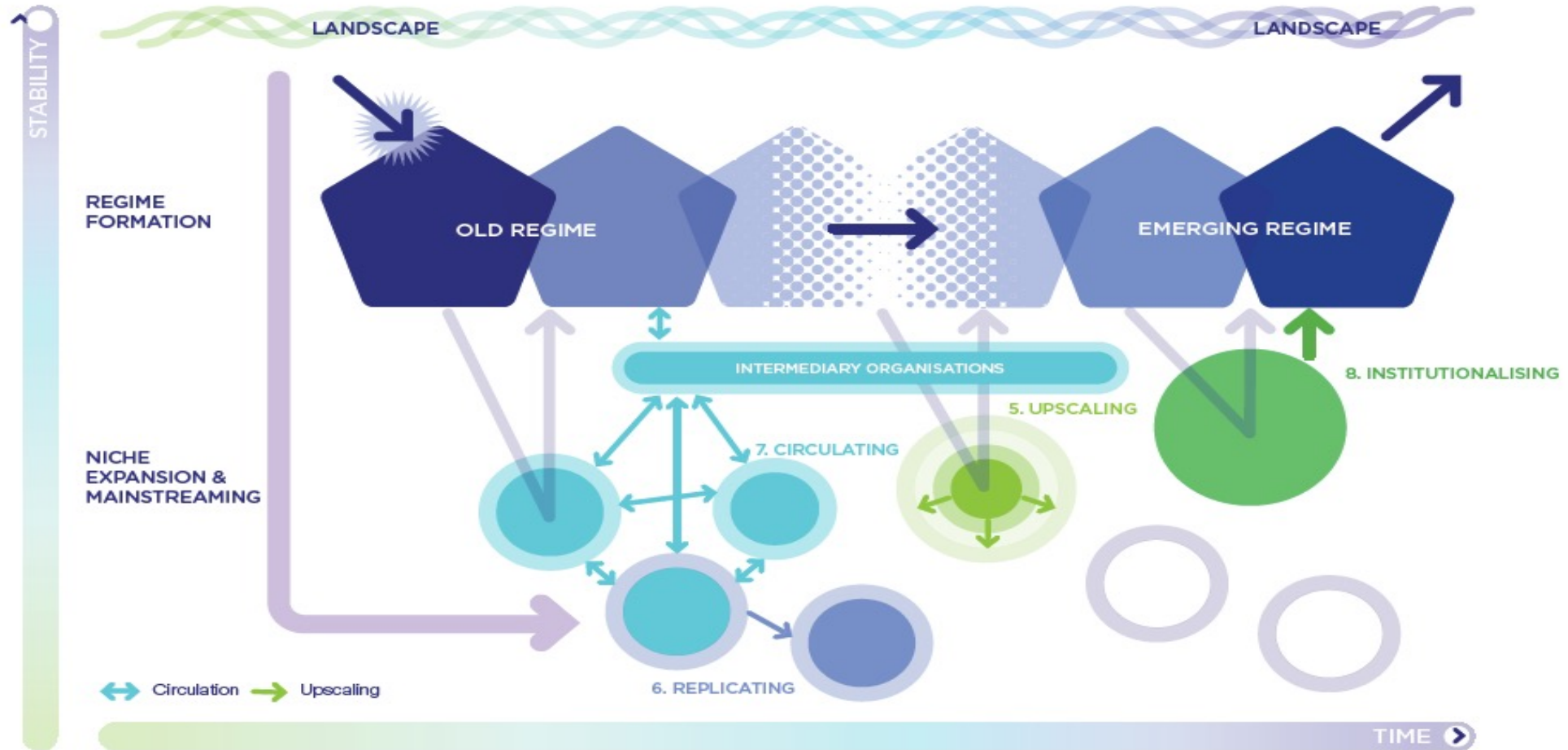
→ Frame 1 → Frame 2 → Frame 3

Solid line = This shows the frame explicitly addresses this aspect (e.g. the link between knowledge creation and utilization in frame 2).

Dotted line = This indicates that an aspect is assumed to follow (e.g. the utilization of the results of basic scientific research by industries in frame 1).



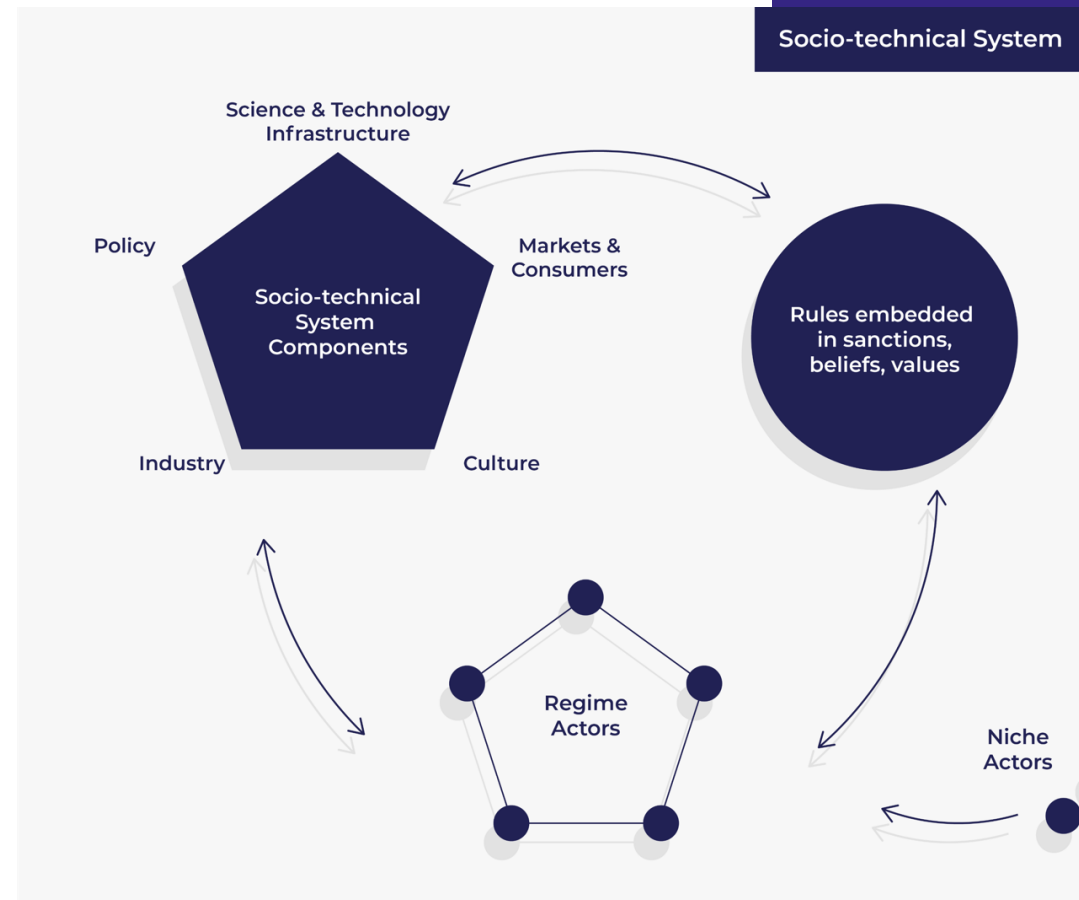
TRANSFORMATIVE OUTCOMES FOR EXPANDING & MAINSTREAMING NICHES



Adapted from Geels and Raven (2006).

Creative Commons license

What is at stake with system change?



What is a socio-technical system?



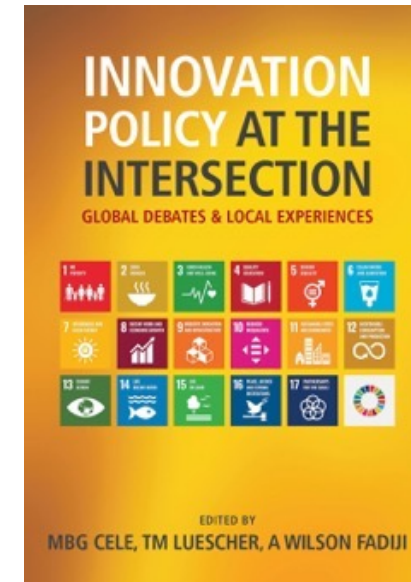
NSI Ecosystem Mapping and Case Studies on STI Policy

TIP Africa Hub: 4 SSA countries involved in the SGCI and beyond

- South Africa
- Ghana
- Kenya
- Senegal
- Malawi, Botswana, and others

Latin America Hub: Colombia, Mexico, Panama

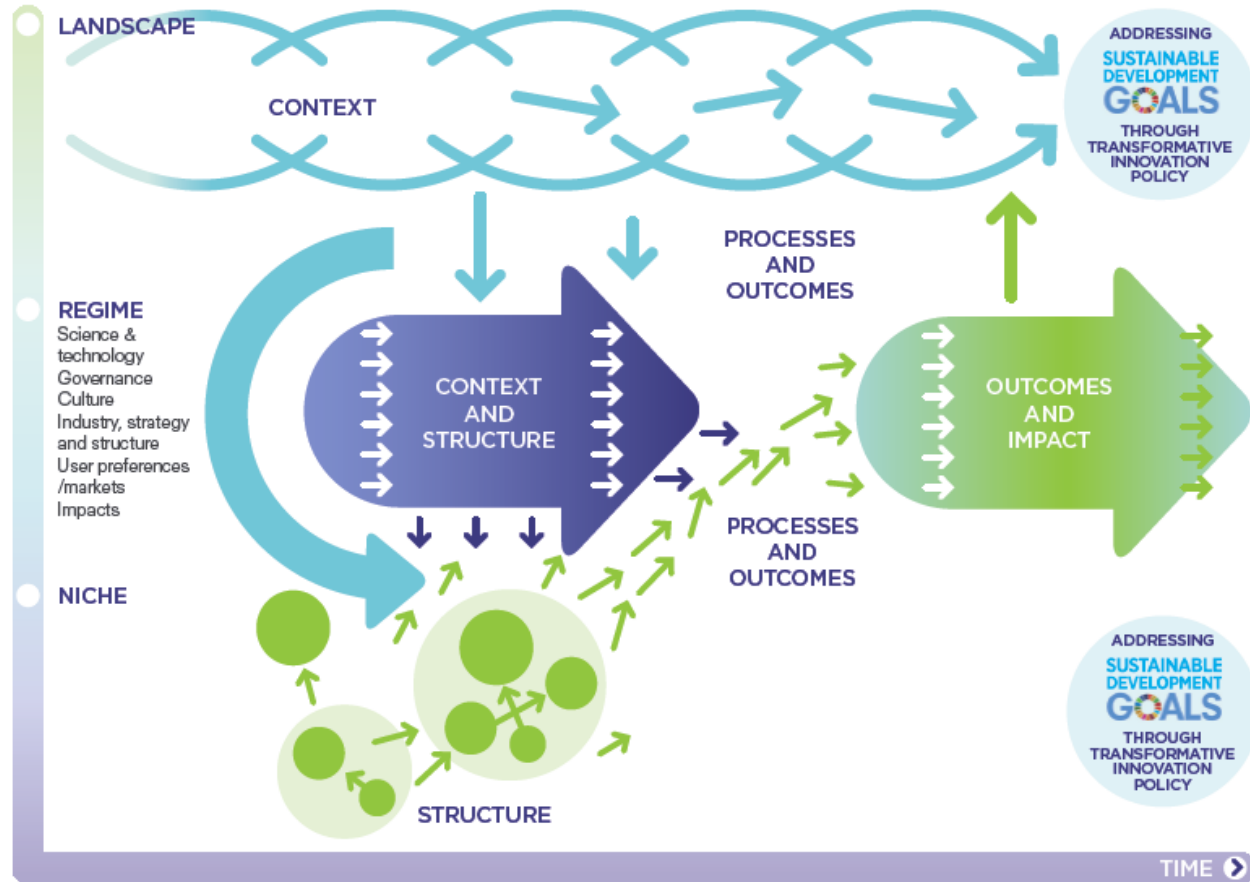
European/Nordic Hub: Sweden, Norway, Finland, The Netherlands, UK



TIPC Policy Experiments: In-Country research and EPEs

- 1 South-Africa: Developing a portfolio of policy experiments to work with the TIPC methodology – coordination through a South Africa TIPC, Living Catchments
- 2 Ghana: Electronic waste; Kenya: Inclusive education in rural areas, focusing pastoralists; Senegal: Virtual University, a focus on higher education
- 3 Vinnova - Sweden: Mission Orientated Innovation program (in collaboration with Finland & Norway)
- 4 Climate-KIC (EU program) – work on three policy experiments: sustainable mobility, nature-based solutions and sustainable land planning
- 5 Colombia: Developing a portfolio of policy experiments through Latin-American Hub and Minciencias

A Generic Theory of Change for Transformation Innovation Policy Evaluation



Comparing Innovation Cultures: Insights from Africa and Policy Implications

Differences in the innovation culture, context and outlook

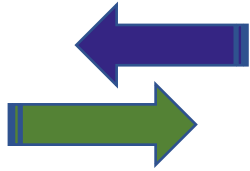
- R&D (Frame 1), funding, directionality
- NSI (Frame 2), linkages, learning
- Research, Data, S&T, and agenda
- Indicators, metrics, measurements
- Governance and structure
- Industry, markets, User preferences
- Regime, niche, development impacts
- Policy processes, capabilities, skills
- Prioritisation and urgency
- Political economy considerations

TIAH / TIPC

Research

Experiments

Learning and
capacity building



The Deep Transitions Lab



TIAH/TIPC: Research and Experimentation | Learning and development | Connecting to private investors

Benefits of joining TIAH and the TIP Consortium

- Design and implementation of transformative (mission-oriented) policies for addressing the SDGs through policy experiments with demonstrators
- Access to research, resources, training and other experiments in the Africa region and globally
- Part of a network of frontrunners, able to set the agenda and advance Transformative Innovation Policy in Africa and globally
- Strengthening national research capacity, connecting to international leading network of scholars
- Access to private investors and their networks via the Deep Transitions (DT) Lab
- Engagement with a community working on sustainable change, and receiving feedback on your own policy experiments and TIP research

Guiding principles of TIAH and TIPC membership

- Sustainability challenges are systemic by nature. Members therefore aim to foster systemic changes. This is undertaken by strengthening transformative niches that can help open up socio-technical systems to transformation in the public policy realm. In practice, this involves undertaking experiments with a range of actors, including users and civil society, as well as business and academia.
- Policy experimentation is an important mechanism for learning and reflection, facilitating processes of change in socio-technical systems. A fundamental part of any experiment is the first and second order learning that takes place during the process to address the complex problems of socio-technical changes.
- An emphasis on formative evaluation, prioritising reflection and learning as integral to the development of capabilities to address the challenges of sustainability. Members can therefore maximise leverage from experiments by building these capabilities, e.g. the ability to incorporate learning derived from execution of activities, and to adjust original assumptions as this learning takes place. The evaluation process also involves attention to process and output of the transformation process.



c.u.daniels@sussex.ac.uk, +44795 046 5054 (Mobile/WhatsApp)

LinkedIn: <https://www.linkedin.com/in/chuxdaniels/>

**Let's stay in
touch!**

For more information on The Africa Hub:

https://www.tipconsortium.net/regional_hub/transformative-innovation-africa-hub-tiah-future-africa/

www.tipconsortium.net