

All Children Thrive

Co-Creating System Transformation So That Every Child Can Thrive

Carley Riley, MD, MPP, MHS, FAAP

Associate Professor, Pediatrics, University of Cincinnati College of Medicine

Attending Physician, Critical Care, Cincinnati Children's Hospital

Director of Community Science and Systems Change, Michael Fisher Child Health Equity Center

Director, Mayerson Child Well-being Initiative

Improving the Health and Wellbeing of Children and Youth Through Health Care System Transformation

The National Academies of Sciences, Engineering, and Medicine

April 4, 2023

The heads, hearts, and hands of many!



Our Vision

Cincinnati Children's Hospital
Medical Center will be the leader
in improving **child health**.

All Children Thrive (ACT) actcincy.org

ACT is a Learning Network dedicated to creating a community where our children can thrive.

- Utilize quality improvement science to examine our current systems where families live, work, and play, and identify opportunities and act to change and improve those systems.
- Working with families and community partners, building trust, and listening to the needs and hopes of children, youth, families, and communities, we have made significant strides in areas such as:
 - improving infant mortality and prematurity by transforming prenatal care across our county,
 - reducing excess days spent in the hospital instead of in school or at play,
 - increasing significantly the number of young children receiving all preventive services,
 - supporting children reading proficiently or better by third grade, and
 - increasing food security in historically and structurally disadvantaged neighborhoods.

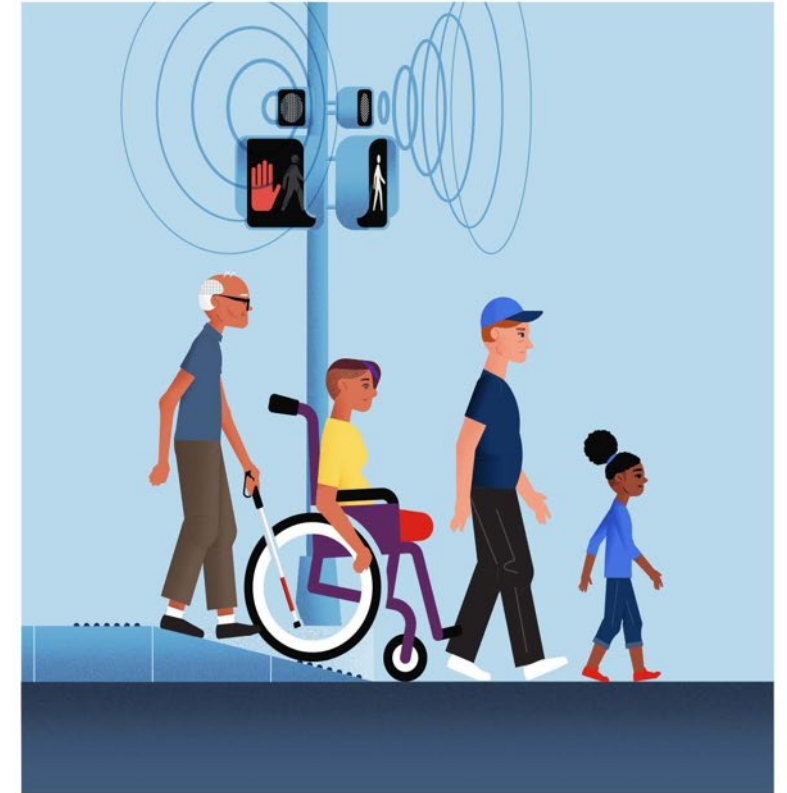
Together with children, youth, families,
and community, we will ensure that
Cincinnati is a place where **all children can thrive.**

Health equity

Health equity means that everyone has a **fair and just opportunity** to be as healthy as possible. Achieving this requires removing obstacles to health—such as poverty and discrimination and their consequences, which include powerlessness and lack of access to good jobs with fair pay; quality education, housing, health care; and safe environments.

EQUITY:

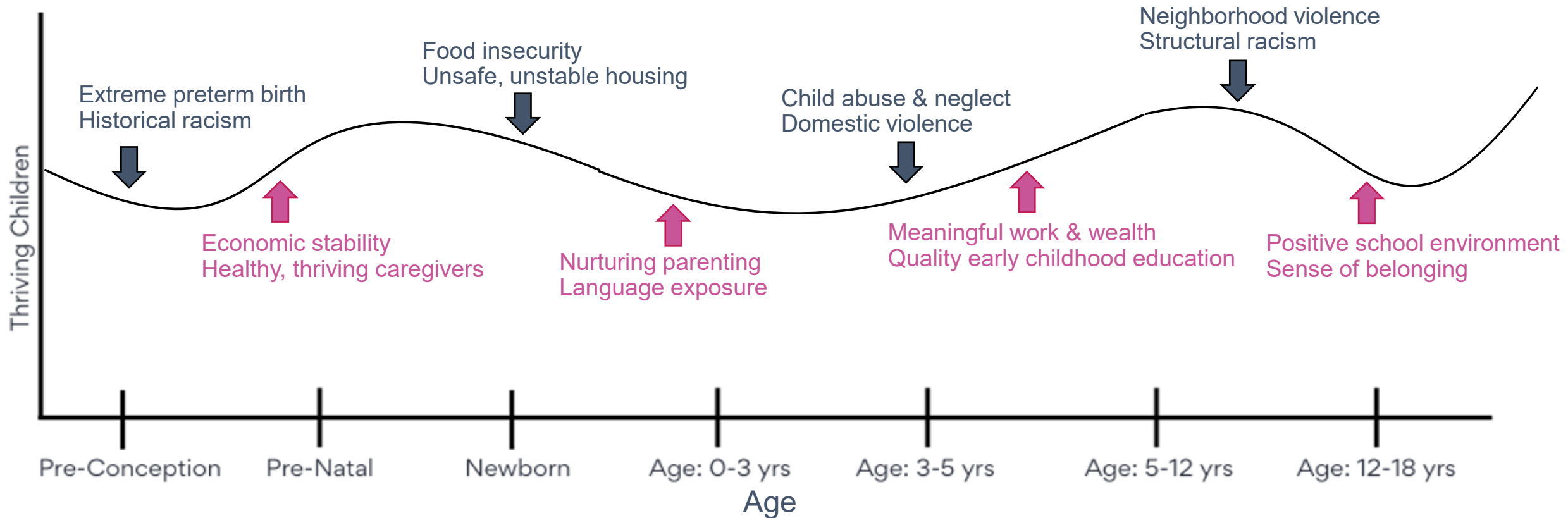
Everyone gets what they need – understanding the barriers, circumstances, and conditions.



Copyright 2022 Robert Wood Johnson Foundation

Braveman, P., Arkin, E., Orleans, T., Proctor, D., Acker, J., & Plough, A. (2018). What is health equity? Behavioral Science & Policy, 4(1), 1–14.

Life Course Trajectory for Thriving



* Exposure can occur at any age

Adapted from Halfon



“Every system is perfectly designed to get the results it achieves.”



**“What if we don’t change at all ...
and something magical just happens.”**

Our current systems are producing
stark inequities in child health.

Justice-driven systems transformation requires
co-production of solutions and reallocation of power.

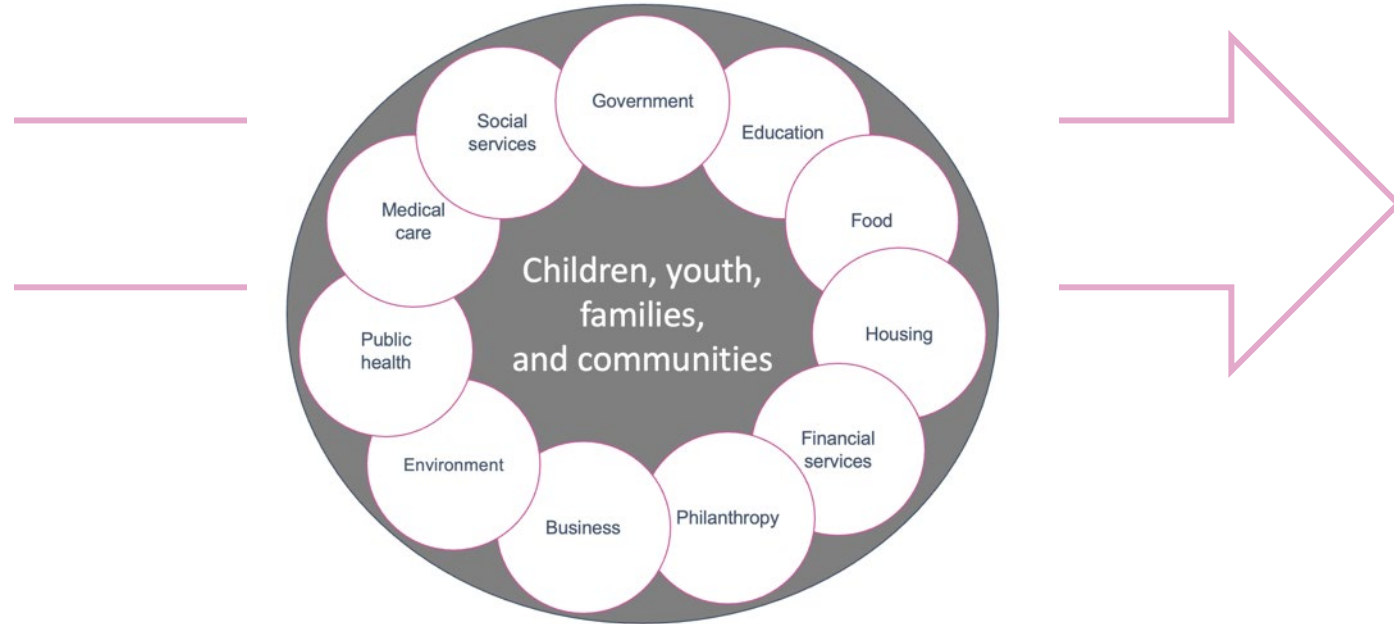
An Example

FAMILY-CENTERED LEARNING SYSTEM

System of Shared Learning & Improvement

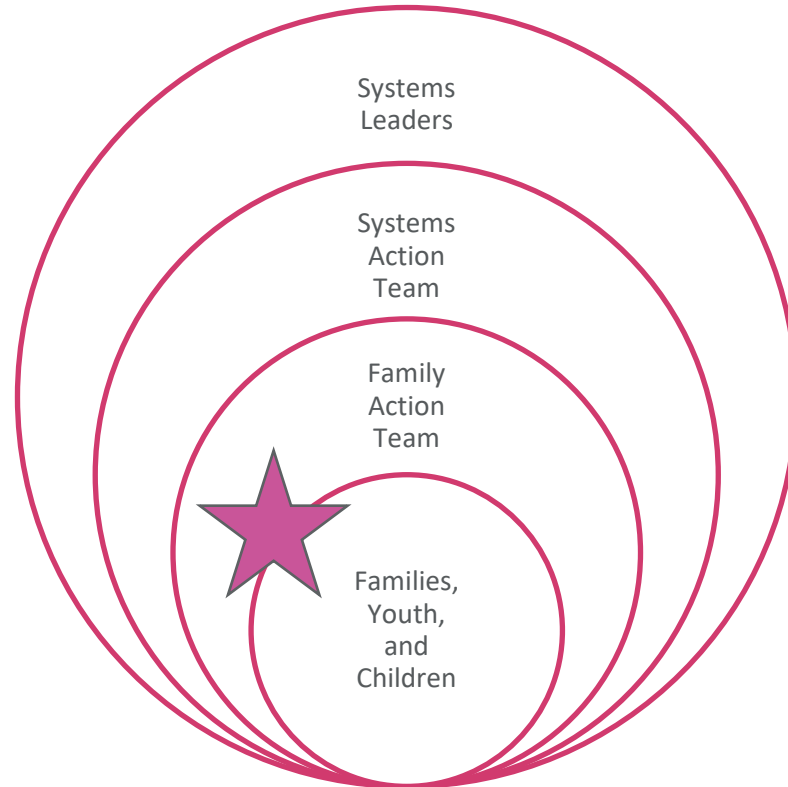


Deep learning about systems
with children, youth, and families



Collective cross-sector action to
disrupt and transform systems

System for Shared Learning | Family Action Team



Family Gamma ROMA Scores
March 2022 to February 2023

Bio: Single mother of 8 living in Lockland ,unable to return to work due to postpartum medical complications. Four of eight children hold US citizenship. Mother is fluent in French and Swahili and is learning English. Mom has her masters degree.

Prioritized needs: Health, Employment, Income

Note: some data points overlap along domain lines

Family Gamma ROMA Scores

March 2022 to February 2023

● Food

▲ Housing

■ Income

◆ Emergency Funds

◆ Social Connectedness

▲ Overall Emotional Health

■ Fist to Five Mood (0-5)

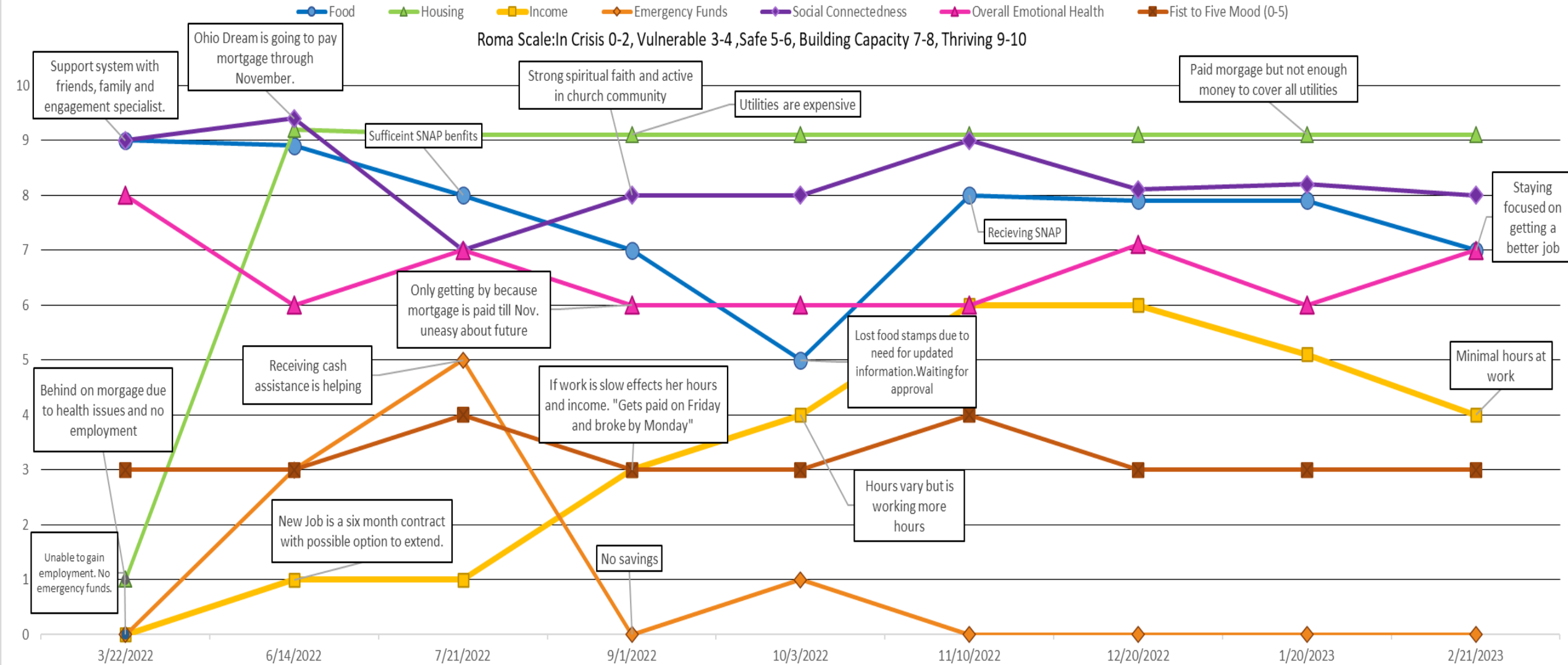
Bio: Single mother of 8 living in Lockland ,unable to return to work due to postpartum medical complications. Four of eight children hold US citizenship. Mother is fluent in French and Swahili and is learning English. Mom has her masters degree.

Prioritized needs: Health, Employment, Income

Note: some data points overlap along domain lines

Family Gamma ROMA Scores March 2022 to February 2023

Roma Scale: In Crisis 0-2, Vulnerable 3-4, Safe 5-6, Building Capacity 7-8, Thriving 9-10

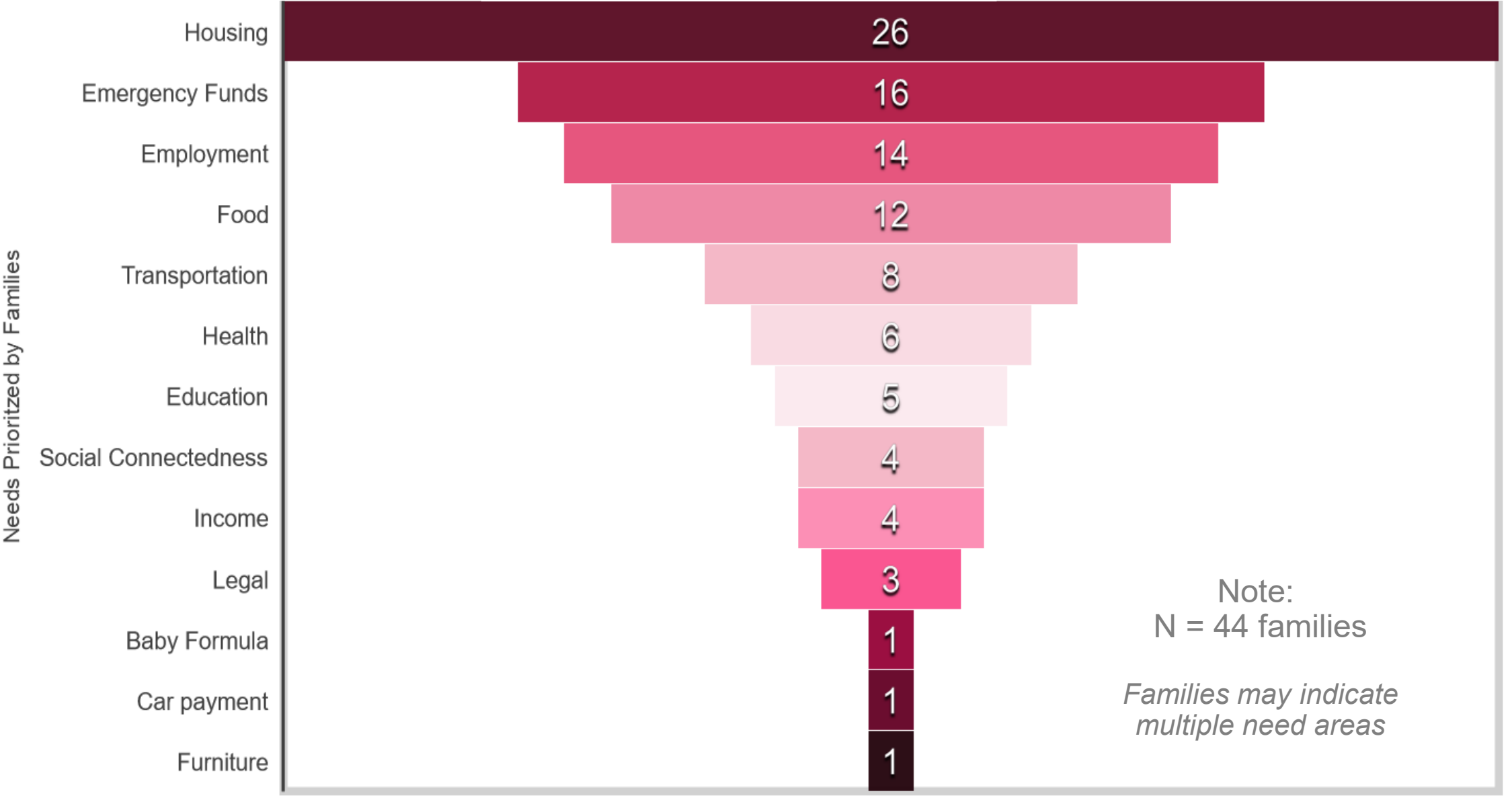


Bio: Single mother of 8 living in Lockland, unable to return to work due to postpartum medical complications. Four of eight children hold US citizenship. Mother is fluent in French and Swahili and is learning English. Mom has her masters degree.

Prioritized needs: Health, Employment, Income

Note: some data points overlap along domain lines

Family-Prioritized Needs (Updated March 2023)



Top 5 **Barriers** (Experienced by 78% of families)

Must be in crisis or emergency before able to access resource or support

High demand for resources, overwhelmed agencies

Unclear or no action pathway

Caregiver mental fatigue, readiness

Limited or no legal representation available

Top 5 Key Learnings (Experienced by 70% Families)

Resources are reactive, crisis dependent. No supports for upward mobility.

Families are particularly vulnerable to unmet needs at times of transition.

Families must engage in complex, variable, lengthy, multi-step processes.

Systems are fragmented and work in siloes that families must navigate.

Building trust with families is essential for their forward or upward progress.

System Attributes that Promote Thriving

System is anti-racist

System is easily
accessible to all

System is empathetic

System empowers families

Systems are integrated

System is proactive

System is safe

System is trustworthy

System Attributes that Promote Thriving

System is **anti-racist**

System is easily
accessible to all

System is **empathetic**

System **empowers families**

Systems are **integrated**

System is **proactive**

System is **safe**

System is **trustworthy**

System Attributes that Promote Thriving

of Key Learnings (out of 72)
*Learnings can apply to multiple attributes

of Families (out of 41)

System is **anti-racist**

- Disrupts existing racist practices, procedures, and policies
- Creates policies that promotes racial equity
- Contributes to community vitality

8

37

System is easily **accessible to all**

- Supports families where they are
- Has a pathway and roadmap to initiate supports and create forward progress

7

38

System is **empathetic**

- Operates in empathic kindness
- Tailors actions and responses to families' needs
- Responds in a timely manner and in the right way
- Responds to family priorities

17

38

System **empowers families**

- Builds capability and life skills for families
- Offers pathways toward thriving
- Breaks down norms & stigma
- Provides knowledge as power

11

39

Systems are **integrated**

- Shares information with one another & works together
- Operates across a single, standardized process for intake
- Integrates within itself and among other systems

11

40

System is **proactive**

- Acts in a timely manner
- Continuously improves
- Demonstrates flexibility & adaptability
- Provides upfront, clear communication of processes
- Has consistent processes
- Offers bridging solutions and is flexible in sustaining services
- Anticipates family needs

25

40

System is **safe**

- Disrupts misinformation
- Engages without creating negative consequences
- Ensures safety of child to meet family needs
- Responds with dignity

8

36

System is **trustworthy**

- Prioritizes building trust
- Ensures support for clients are also available to employees
- Recognizes & addresses gaps within their own system
- Includes parent voice

7

38

“Every system is
perfectly designed
to get the results it
achieves.”

We strive to
co-create the
cross-sector,
city-wide
learning system
perfectly designed
to produce
equitable child &
youth thriving.



Carley Riley
Carley.Riley@cchmc.org

THE PEOPLE WHO ARE
CRAZY ENOUGH
TO THINK THEY CAN
CHANGE THE WORLD
ARE THE ONES WHO DO