

About Us



CREW

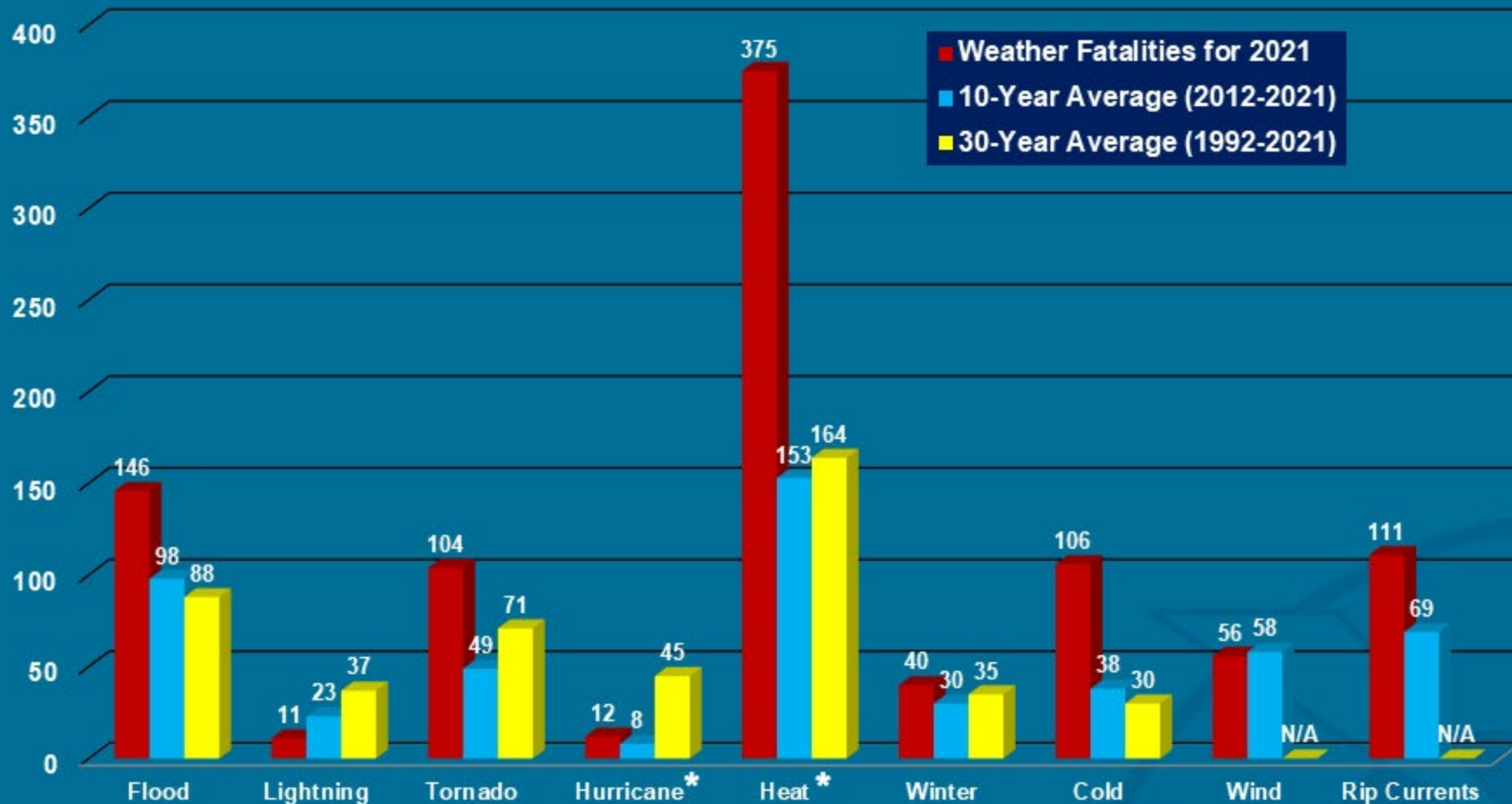
Communities
Responding
to Extreme Weather

CREW is a young **grassroots program** that aims to build equitable, inclusive neighborhood **climate resilience** in New England through hands-on **education, service, and planning.**

www.climatecrew.org



Weather Fatalities 2021



**Due to an inherent delay in the reporting of official heat fatalities in some jurisdictions, this number will likely rise in subsequent updates.*

**The fatalities, injuries, and damage estimates found under Hurricane/Tropical Cyclone events are attributed only to the wind.*

More Heat

S	M	T	W	T	F	S
1	2	3	4	5	6	7
8	9	10	11	12	13	14
15	16	17	18	19	20	21
22	23	24	25	26	27	28
29	30	1	2	3	4	5
6	7	8	9	10	11	12
13	14	15	16	17	18	19
20	21	22	23	24	25	26
27	28	29	30	31	1	2
3	4	5	6	7	8	9
10	11	12	13	14	15	16
17	18	19	20	21	22	23
24	25	26	27	28	29	30

1971 - 2000

(Baseline)

S	M	T	W	T	F	S
1	2	3	4	5	6	7
8	9	10	11	12	13	14
15	16	17	18	19	20	21
22	23	24	25	26	27	28
29	30	1	2	3	4	5
6	7	8	9	10	11	12
13	14	15	16	17	18	19
20	21	22	23	24	25	26
27	28	29	30	31	1	2
3	4	5	6	7	8	9
10	11	12	13	14	15	16
17	18	19	20	21	22	23
24	25	26	27	28	29	30

2015 - 2044

(2030)

S	M	T	W	T	F	S
1	2	3	4	5	6	7
8	9	10	11	12	13	14
15	16	17	18	19	20	21
22	23	24	25	26	27	28
29	30	1	2	3	4	5
6	7	8	9	10	11	12
13	14	15	16	17	18	19
20	21	22	23	24	25	26
27	28	29	30	31	1	2
3	4	5	6	7	8	9
10	11	12	13	14	15	16
17	18	19	20	21	22	23
24	25	26	27	28	29	30

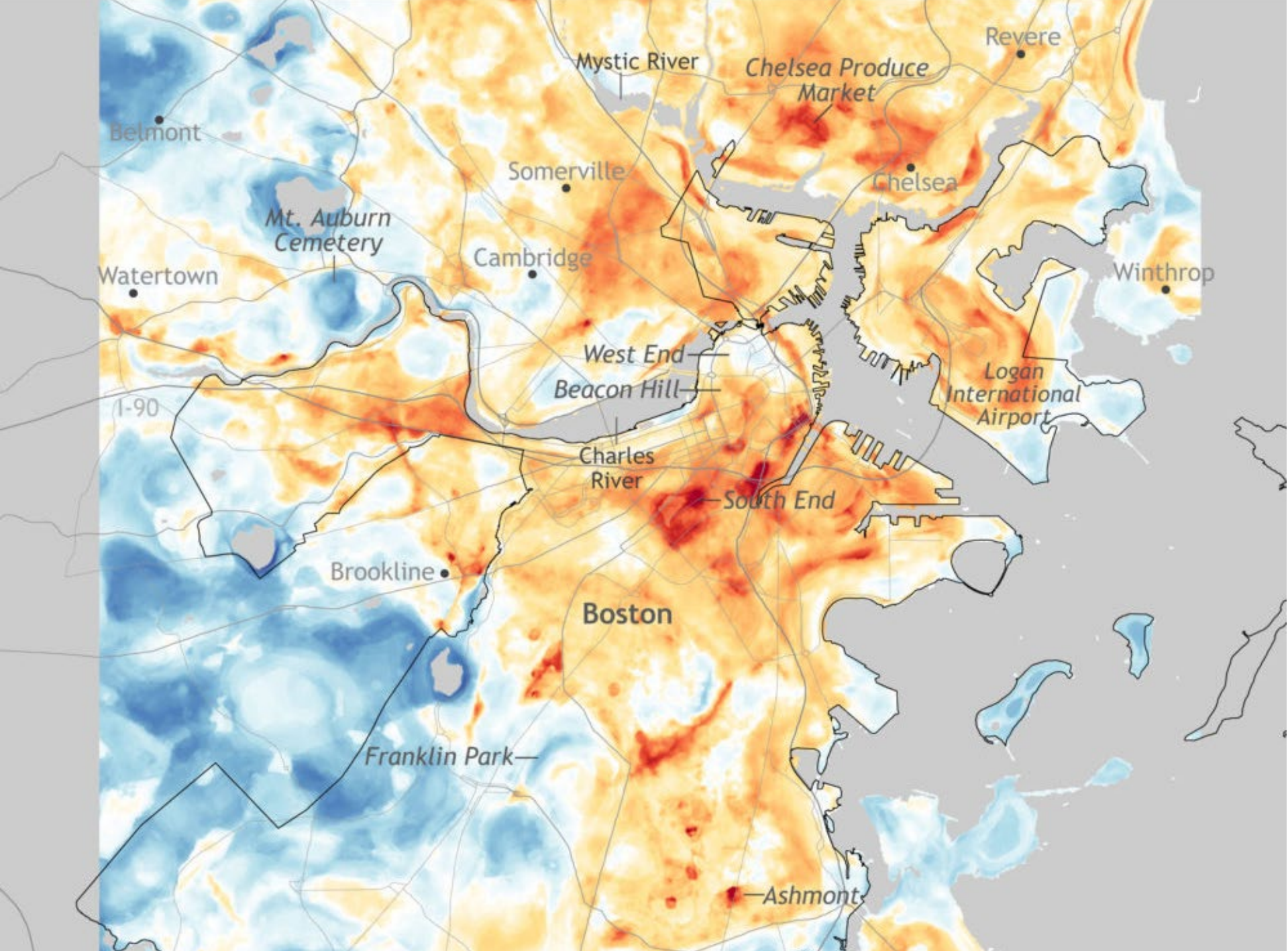
2055 - 2084

(2070)

Above 90°F - Low Scenario
 Above 90°F - High Scenario
 Above 100°F - Low Scenario
 High 100°F - High Scenario

*Summer is considered to be the 91 days of June through August





What are Climate Resilience Hubs?

Community institutions that help residents prepare for (and respond to) extreme weather events.



St. Stephen's Episcopal Church, Boston, MA



Boston Nature Center,
Mattapan





How to stay healthy in the summer heat







Bill in the MA Statehouse

- An Act promoting resilience against the heat-related impacts of climate change
- **Bill S.2097**
- The assistance provided to a household for the purchase and installation of a box fan shall not **exceed a maximum benefit of \$75**, and the assistance provided to a household for the purchase and installation of an **air-conditioning unit shall not exceed a maximum benefit of \$500**; provided, that the department shall review these maximum benefits every year and may increase them if it determines that doing so is necessary to cover the costs of purchasing and installing a box fan or an air-conditioning unit that meets the requirements of subsection