

A Case from the UK: The Education Endowment Foundation (EEF)

Professor Becky Francis

Chief Executive

Education Endowment Foundation



Education
Endowment
Foundation



@EducEndowFoundn

Two examples of driving research impact in education, in the UK context:

- 1) The Research Excellence Framework, and its foregrounding of 'impact'
- 2) The Education Endowment Foundation



Education
Endowment
Foundation

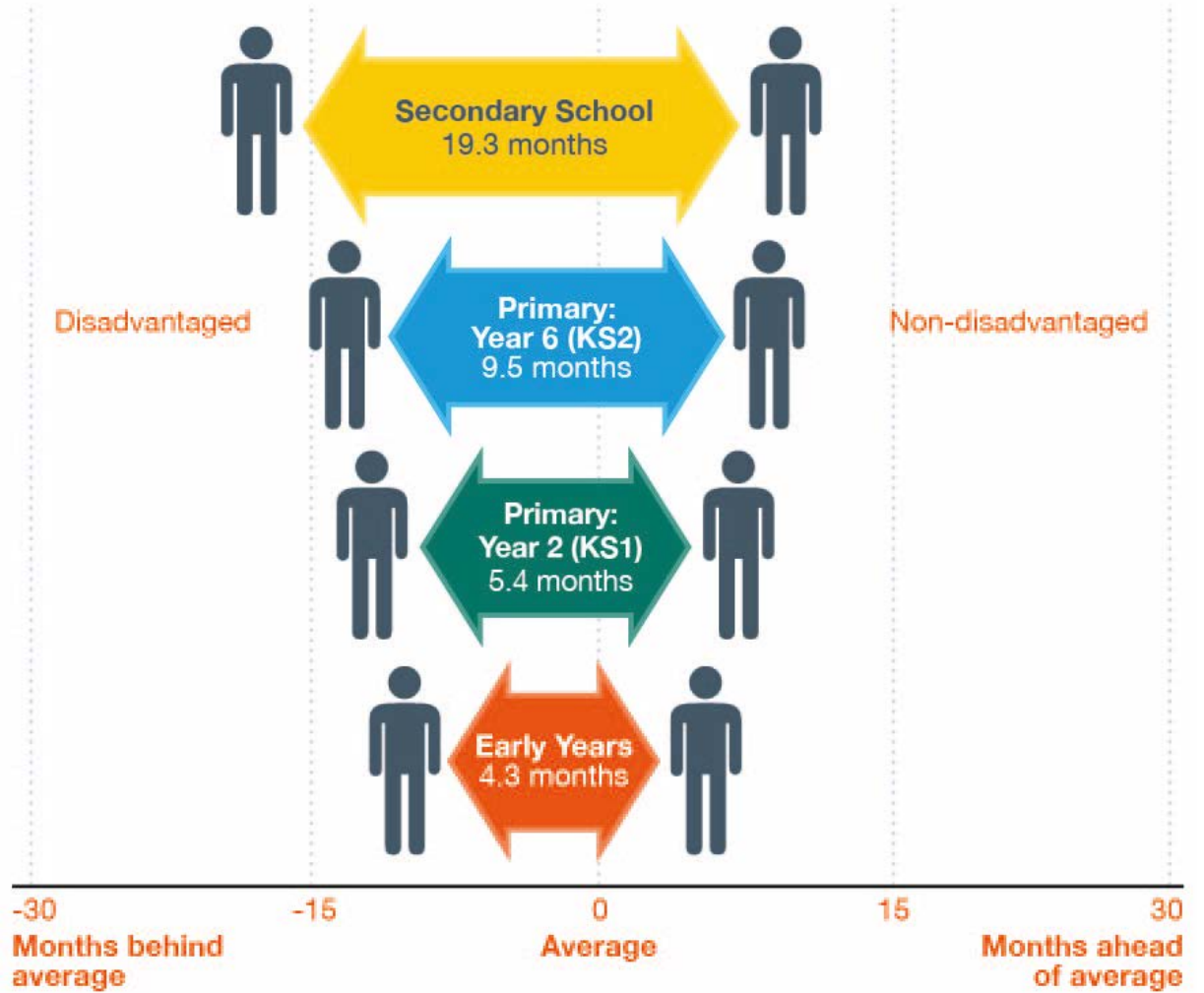


@EducEndowFoundn

The Education Endowment Foundation (EEF)'s mission:

The EEF is an independent charity dedicated to breaking the link between family income and educational achievement.

NB/ In the UK context, the socio-economic gap for education attainment dwarfs gaps for other variables

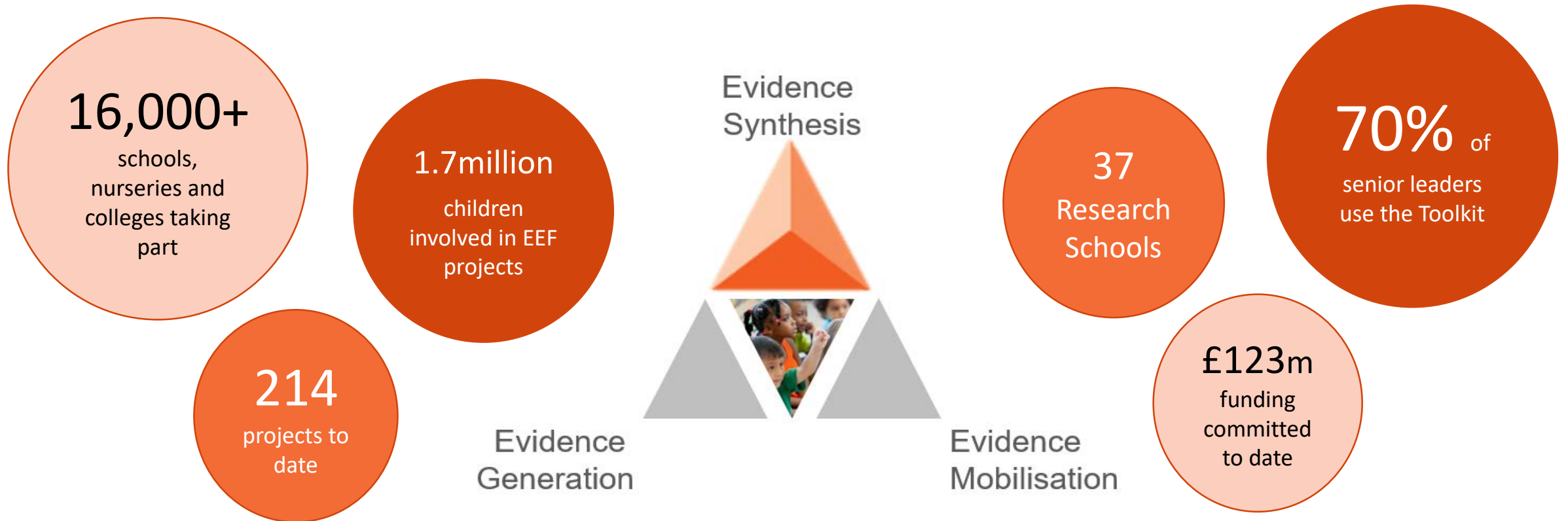


Education
Endowment
Foundation



@EducEndowFoundn

The Education Endowment Foundation



Dedicated to improving the outcomes of 3-18 year-olds, particularly those facing disadvantage.
Supporting teachers, school leaders and policy-makers to use evidence to inform decision-making.

EEF at 10: key achievements

- The EEF has commissioned more than **15 per cent** of all known trials in education around the world including more than a hundred randomised controlled trials (RCTs).
- The EEF's most promising programmes funded so far enabled students to make **+3 months of additional progress** in a year.
- The **National Tutoring Programme** and the **Nuffield Early Language Intervention** are examples of effective approaches that have been trialled by the EEF and scaled to schools across England, as part of the Government's Education Recovery package.
- The EEF is committed to global collaboration and has established **5 international partnerships**, developing evidence Toolkits in Latin America, Jordan, Spain, Australia and Cameroon.
- EEF's education database project has successfully screened **12,510 studies**, and completed coding and quality assurance of **2,724 studies**, representing the most comprehensive repository of education studies in the world.

But how to better ensure impact reflecting our mission?

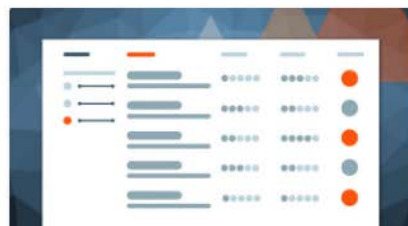
We shall:

- Use the learning from our newly re-launched Teaching and Learning Toolkit to strategically refine commissioning, guidance and communications; ensuring even greater rigour and utility.
- Maintain and develop our programmes and evaluation work – with a more focused approach to evidence generation, including a sharper focus on addressing key mission-driven questions and gaps in the evidence.
- Successfully promote and/or support the scaling of practice evidenced as effective, via pro-active development and targeted use of a range of different approaches - and with a golden thread of attention to implementation running throughout. [Our four-fold approach...](#)

A 4-fold approach to impact

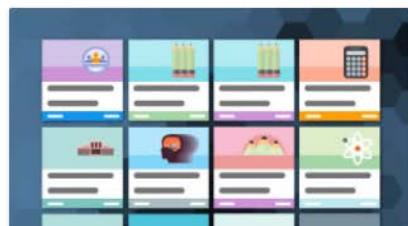
1. Developing 'go-to', sector-leading resources
2. Driving effective policymaking
3. Working directly with schools across the system
4. Supporting the most effective interventions to scale up

1. 'Go-to', sector-leading resources



Teaching and Learning Toolkit

An accessible summary of the international evidence on teaching 5-16 year-olds



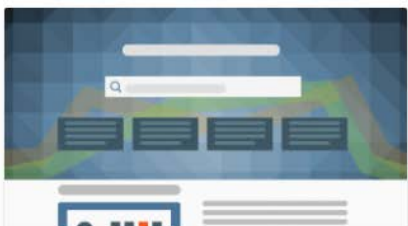
Guidance Reports

Clear and actionable recommendations for teachers on a range of high-priority issues, based on the best available evidence



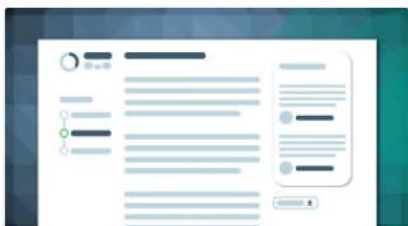
School Improvement Planning

This school improvement planning resources page offers evidence-based guidance to schools to support their work for the upcoming academic year 2021 – 22.



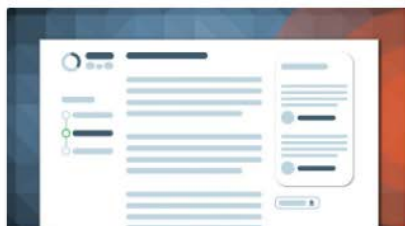
Families of Schools Database

Find out how your school compares to other, similar schools



Assessing and Monitoring Pupil Progress

A guide to help track pupils' progress and assess their mastery of knowledge and concepts

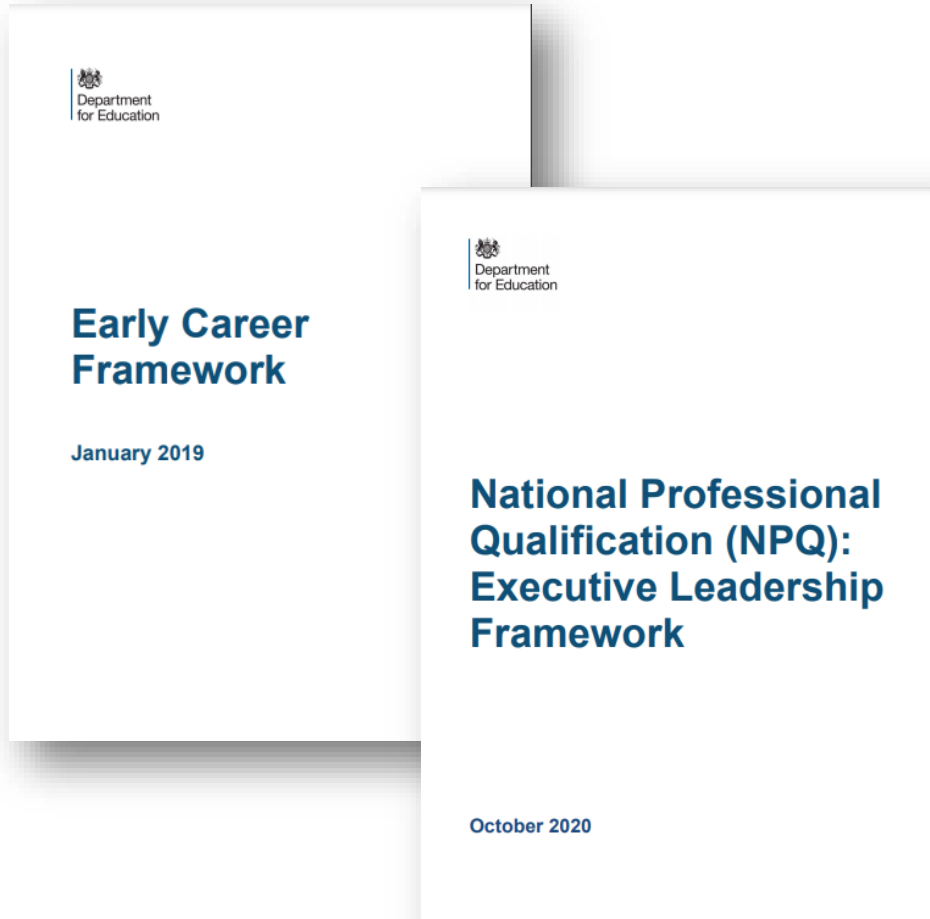


DIY Evaluation Guide

An interactive tool supporting teachers to conduct evaluations of new programmes in your own context



2. Driving effective policymaking



"Whether it's tutoring or whether it's improving the quality and the resources that go into training teachers and helping them develop over their careers... we know we can deliver that over this period, and that's why £3bn of extra investment is going to go in and it really does make a difference."

"We've got lots of evidence and research from places like the Education Endowment Foundation that over the years have figured out that these things are the best things to do."

- Chancellor Rishi Sunak, June 2021



Education
Endowment
Foundation



@EducEndowFoundn

3. Work with schools: Focused system capacity building



North West

1. Alexandra Park Associate Research School, Stockport
2. Aspirer Research School, Macclesfield
3. Blackpool Research School
4. Cumbria Associate Research School
5. Manchester Communication Research School
6. Meols Cop Research School, Southport
7. Oldham Research School
8. Oldham Associate Research School
9. Wilbraham Associate Research School, Manchester

Yorkshire and the North East

10. Bradford Research School
11. Carmel Research School, Darlington
12. Doncaster Research School
13. Huntington Research School, York
14. Newcastle Research School
15. North Yorkshire Coast Research School
16. Sheffield Associate Research School
17. Shotton Hall Research School, County Durham
18. Town End Associate Research School, Sunderland
19. The Wolds Associate Research School, Hull and the East Riding

West Midlands and Central England

20. Billesley Research School, Birmingham
21. St Matthew's Research School, Birmingham
22. Staffordshire Research School
23. Leicestershire and Rutland Associate Research School
24. Sandringham Research School, Hertfordshire

East Midlands and the East of England

25. Derby Research School
26. Ipswich Associate Research School
27. Kyra Research School, Lincolnshire
28. Norwich Research School
29. Unity Research School, Suffolk

London and the South East

30. Charles Dickens Research School, London
31. Durrington Research School, Worthing, West Sussex
32. East London Research School
33. Greenshaw Research School, Sutton

South West and South Coast

34. Cornwall Associate Research School, Mounts Bay
35. HISP Research School, Eastleigh
36. Kingsbridge Research School, Devon
37. West Somerset Research School, Wells



Education
Endowment
Foundation



@EducEndowFoundn



@EducEndowFoundn

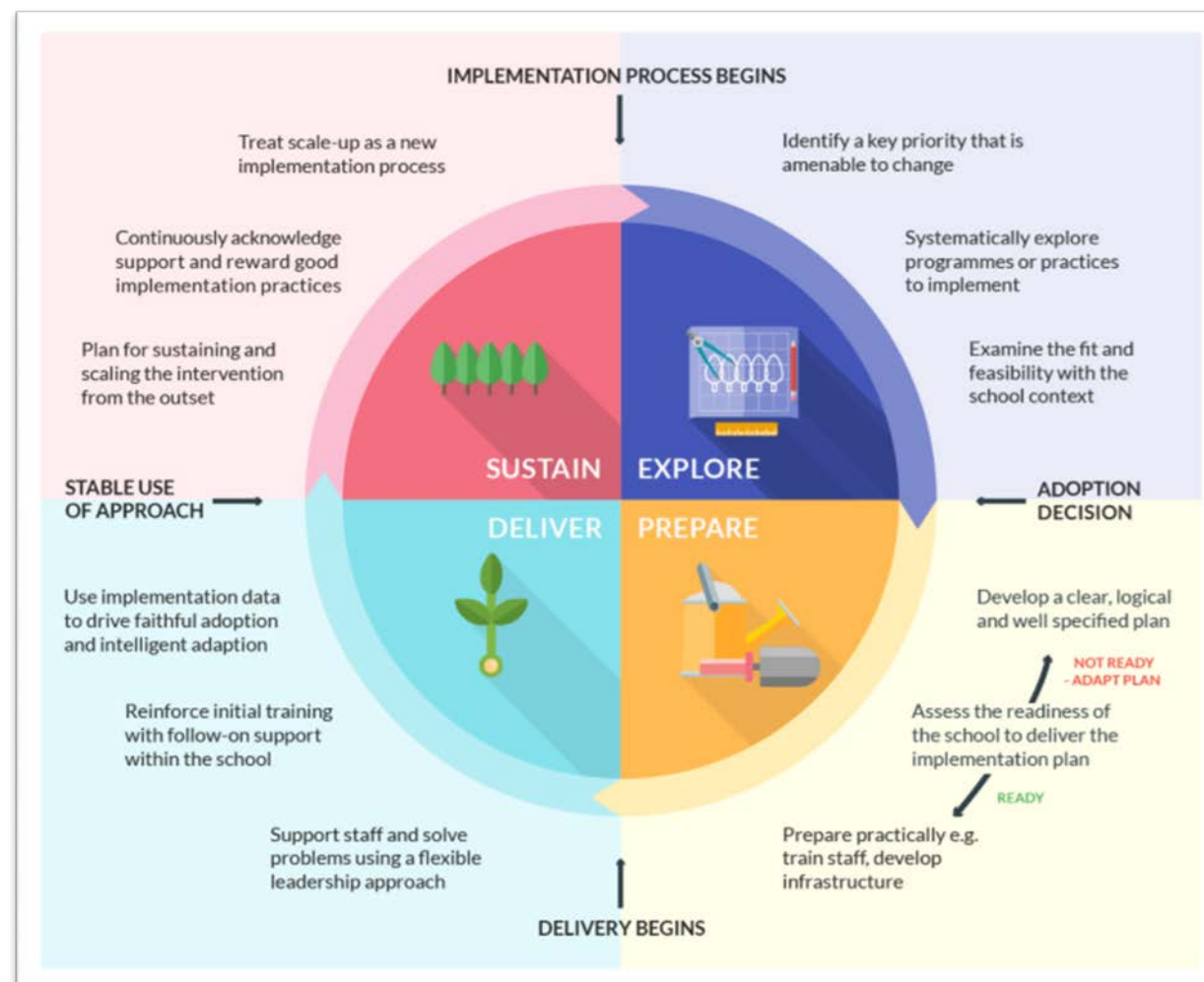
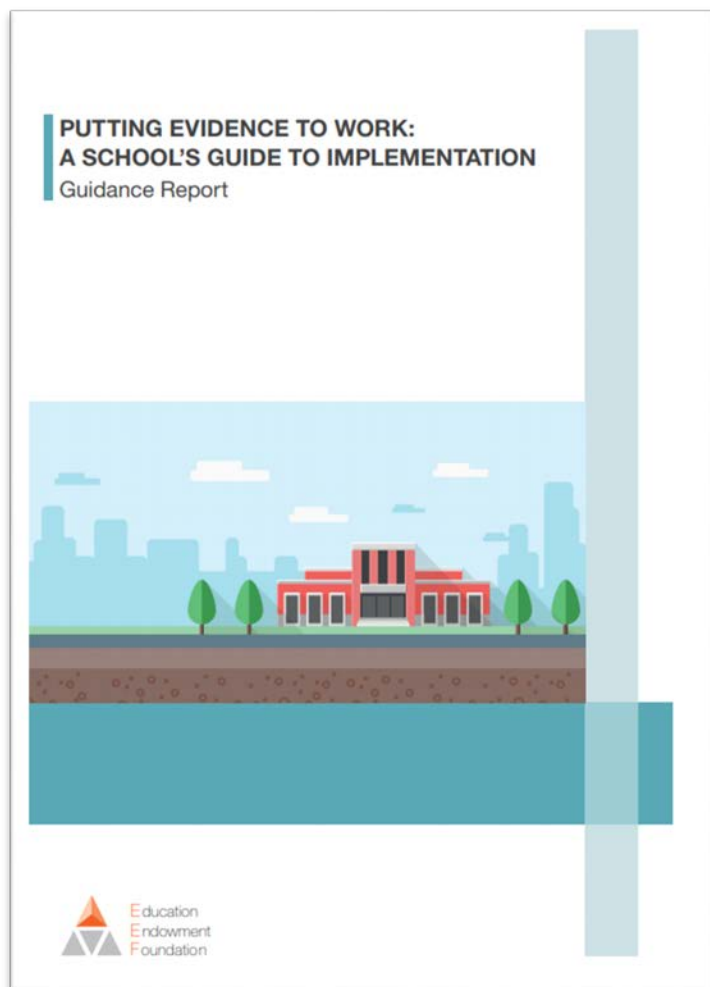


Nuffield
Early
Language
Intervention

+3

Y1 reach: 62,000 pupils

Implementation



Education
Endowment
Foundation



@EducEndowFoundn

Reflections on how the approach is achieved

1. Significant long-term resource, enabling 'presence' and leverage
2. A galvanising mission
3. Recruitment of experts for different functions
4. Credibility
5. Vehicles for genuine engagement with practice
6. Constructive relationship with Government and other key stakeholder organisations





Thank you

Info@eefoundation.org.uk

www.educationendowmentfoundation.org.uk



Education
Endowment
Foundation



@EducEndowFoundn