

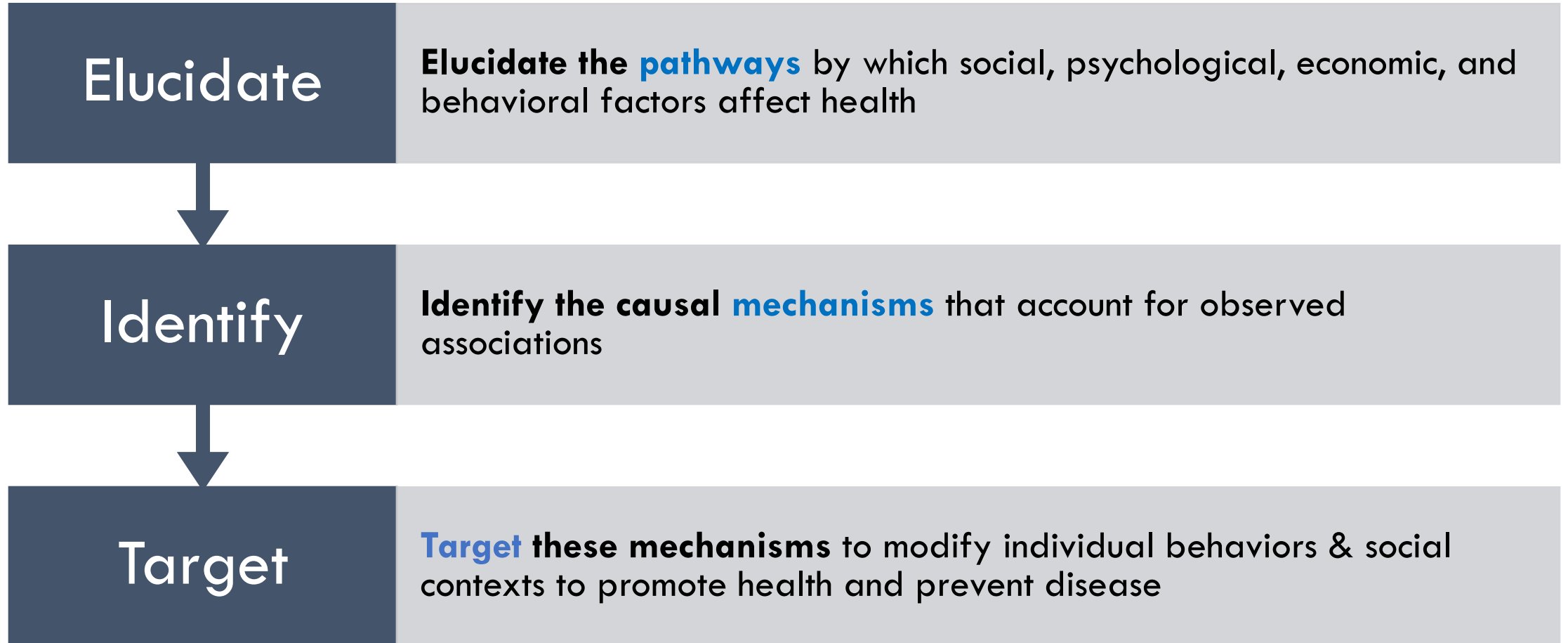
Decadal Survey of Behavioral and Social Science Research on Alzheimer's Disease and Alzheimer's Disease Related Dementias

Lis Nielsen

Director, Division of Behavioral and Social Research (BSR)

July 7, 2020

BSR supports social, behavioral, and economic research and training on the processes of aging at the individual and societal levels.



NIA/BSR's work ...

NIA/BSR's work ...



Health, function, and well-being

NIA/BSR's work ...



Health, function, and well-being



Life course approach to studying aging processes

NIA/BSR's work ...



Health, function, and well-being



Life course approach to studying aging processes



Midlife prevention of the chronic diseases of aging; reversibility & redirection of adverse aging trajectories

NIA/BSR's work ...



Health, function, and well-being



Life course approach to studying aging processes



Midlife prevention of the chronic diseases of aging; reversibility & redirection of adverse aging trajectories



Promotes rigorous approaches to understanding and advancing behavior change at the individual and organizational levels

NIA/BSR's work ...



Health, function, and well-being



Life course approach to studying aging processes



Midlife prevention of the chronic diseases of aging; reversibility & redirection of adverse aging trajectories



Promotes rigorous approaches to understanding and advancing behavior change at the individual and organizational levels



Develops new innovative behavioral and social science approaches to addressing Alzheimer's disease and related dementias



Behavioral and Social Research on Alzheimer's Disease

BSR AD Program Priorities



- **Dementia Care and Caregiver Research**

- 2020 Virtual Summit Series on Care, Services, and Supports for Persons with Dementia & their Caregivers
- Building more effective caregiver interventions: **AD/ADRD Roybal Centers**
- Making health systems responsive to dementia: **NIA Impact Collaboratory**
- AHRQ evidence review of care & caregiving interventions & NASEM assessment of findings and gaps
- *Decadal Workshops 1 & 2: Perspectives of individuals living with ADRD and ADRD caregivers, measured effects of caregiving*

- **Cognitive and Dementia Epidemiology**

- Enhancing existing NIA longitudinal studies; leveraging new life course studies
- *Decadal Workshops 1 & 2: Epidemiological Perspectives on AD/ADRD*



BSR AD Program Priorities

- **Dementia Care and Caregiver Research**
 - 2020 Virtual Summit Series on Care, Services, and Supports for Persons with Dementia & their Caregivers
 - Building more effective caregiver interventions: AD/ADRD Roybal Centers
 - Making health systems responsive to dementia: NIA Impact Collaboratory
 - AHRQ evidence review of care & caregiving interventions & NASEM assessment of findings and gaps
 - *Decadal Workshops 1 & 2: Perspectives of individuals living with ADRD and ADRD caregivers, measured effects of caregiving*
- **Cognitive and Dementia Epidemiology**
 - Enhancing existing NIA longitudinal studies; leveraging new life course studies
 - *Decadal Workshops 1 & 2: Epidemiological Perspectives on AD/ADRD*



BSR AD Program Priorities

- **Behavioral and Social Pathways**
- Early Psychological Changes
- Prevention
- Disparities
- Research Resources
 - Healthy Cognitive Aging Project (HCAP) data resources
 - AD RCMAR, Roybal, and Demography and Economics Centers



BSR AD Program Priorities

- Behavioral and Social Pathways
- **Early Psychological Changes**
- Prevention
- Disparities
- Research Resources
 - Healthy Cognitive Aging Project (HCAP) data resources
 - AD RCMAR, Roybal, and Demography and Economics Centers



BSR AD Program Priorities

- Behavioral and Social Pathways
- Early Psychological Changes
- **Prevention**
- Disparities
- Research Resources
 - Healthy Cognitive Aging Project (HCAP) data resources
 - AD RCMAR, Roybal, and Demography and Economics Centers



BSR AD Program Priorities

- Behavioral and Social Pathways
- Early Psychological Changes
- Prevention
- **Disparities**
- Research Resources
 - Healthy Cognitive Aging Project (HCAP) data resources
 - AD RCMAR, Roybal, and Demography and Economics Centers



BSR AD Program Priorities

- Behavioral and Social Pathways
- Early Psychological Changes
- Prevention
- Disparities
- **Research Resources**
 - Healthy Cognitive Aging Project (HCAP) data resources
 - AD RCMAR, Roybal, and Demography and Economics Centers

Current Charge to the NASEM Decadal Survey Committee

- Conduct meetings, workshops, to generate findings and directions for a behavioral and social science research agenda on AD/ADRD during the next decade (2020-2030) including:
 - AD/ADRD prevention
 - Basic and translational research on behavioral and social pathways to AD/ADRD and cognitive decline
 - Causes and consequences of AD/ADRD health disparities
 - AD/ADRD data infrastructure needs
 - AD/ADRD health economics

Questions?

Lis Nielsen

Division of Behavioral and
Social Research

Lisbeth.Nielsen@nih.gov

<https://www.nia.nih.gov/research/dbsr>