



The
**FUTURE_{of}
NURSING**
2020-2030




**Robin Cogan, Med, RN NCSN, School Nurse,
Camden City School District (Yorkship Family School)**

**Philadelphia Town Hall
University of Pennsylvania School of Nursing
July 24, 2019**

 @theNAMedicine

 National Academy of Medicine or @NAMedicine

 National Academy of Medicine

#FUTUREOFNURSING2030

<https://nam.edu/publications/the-future-of-nursing-2020-2030/>



NATIONAL ACADEMY OF MEDICINE

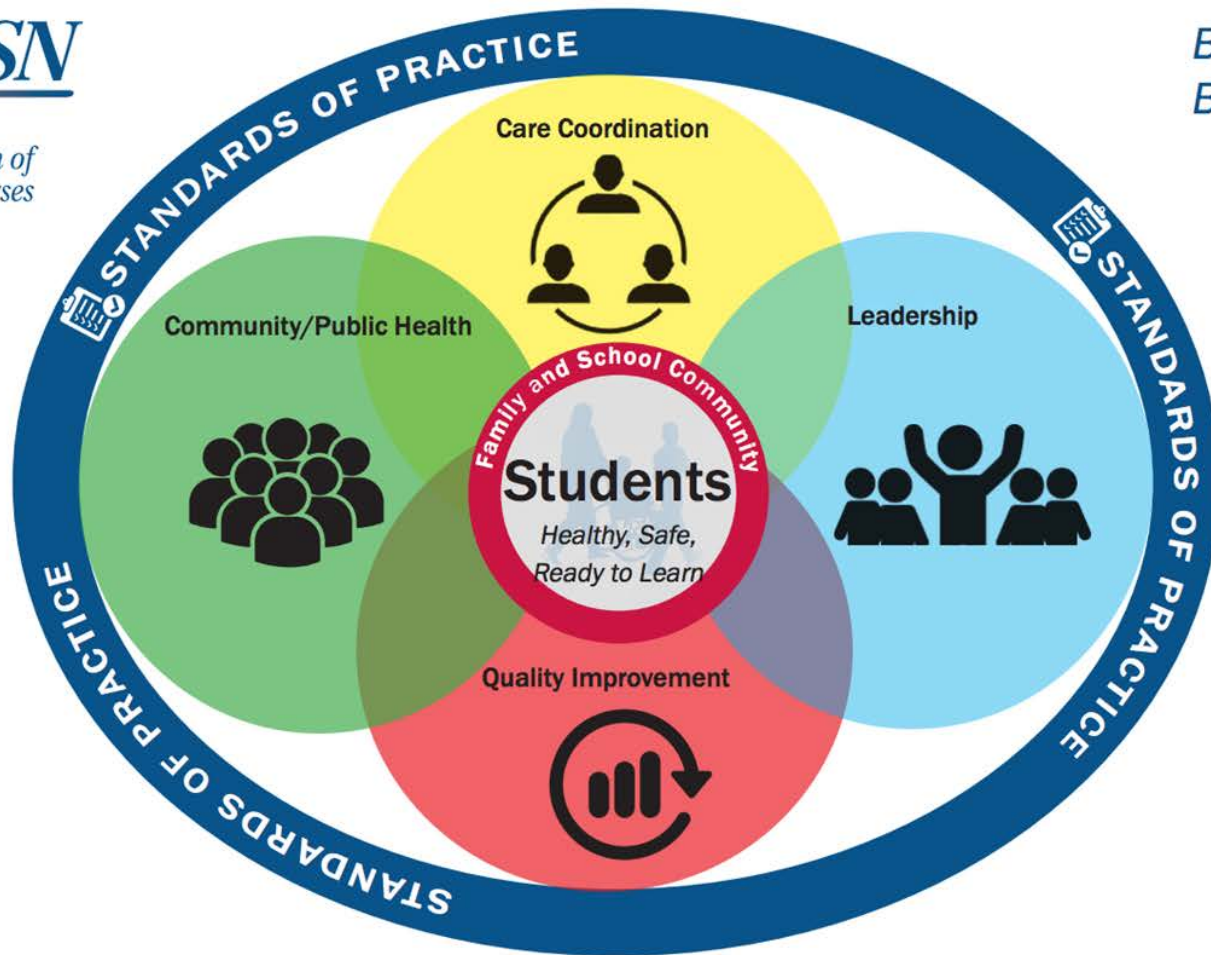


Image Source: Centers for Disease Control and Prevention – Public Domain



**Community Cafe
Mi Casita Daycare Center
Camden, NJ**





Framework for 21st Century School Nursing Practice™

NASN's *Framework for 21st Century School Nursing Practice* (the *Framework*) provides structure and focus for the key principles and components of current day, evidence-based school nursing practice. It is aligned with the Whole School, Whole Community, Whole Child model that calls for a collaborative approach to learning and health (ASCD & CDC, 2014). Central to the *Framework* is student-centered nursing care that occurs within the context of the students' family and school community. Surrounding the students, family, and school community are the non-hierarchical, overlapping key principles of *Care Coordination*, *Leadership*, *Quality Improvement*, and *Community/Public Health*. These principles are surrounded by the fifth principle, *Standards of Practice*, which is foundational for evidence-based, clinically competent, quality care. School nurses daily use the skills outlined in the practice components of each principle to help students be healthy, safe, and ready to learn.

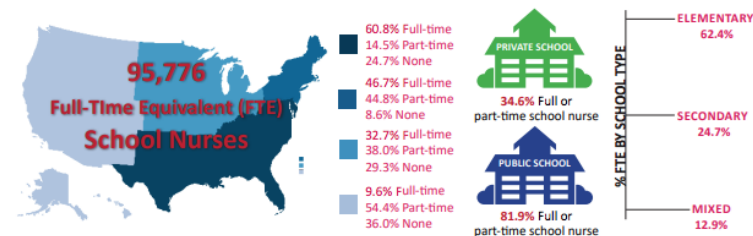
 Standards of Practice <ul style="list-style-type: none">• Clinical Competence• Clinical Guidelines• Code of Ethics• Critical Thinking• Evidence-based Practice• NASN Position Statements• Nurse Practice Acts• Scope and Standards of Practice	 Care Coordination <ul style="list-style-type: none">• Case Management• Chronic Disease Management• Collaborative Communication• Direct Care• Education• Interdisciplinary Teams• Motivational Interviewing/Counseling• Nursing Delegation• Student Care Plans• Student-centered Care• Student Self-empowerment• Transition Planning	 Leadership <ul style="list-style-type: none">• Advocacy• Change Agents• Education Reform• Funding and Reimbursement• Healthcare Reform• Lifelong Learner• Models of Practice• Technology• Policy Development and Implementation• Professionalism• Systems-level Leadership	 Quality Improvement <ul style="list-style-type: none">• Continuous Quality Improvement• Documentation/Data Collection• Evaluation• Meaningful Health/Academic Outcomes• Performance Appraisal• Research• Uniform Data Set	 Community/Public Health <ul style="list-style-type: none">• Access to Care• Cultural Competency• Disease Prevention• Environmental Health• Health Education• Health Equity• Healthy People 2020• Health Promotion• Outreach• Population-based Care• Risk Reduction• Screenings/Referral/Follow-up• Social Determinants of Health• Surveillance
--	---	---	--	--

ASCD & CDC. (2014). *Whole school whole community whole child: A collaborative approach to learning and health*. Retrieved from <http://www.ascd.org/ASCD/pdf/siteASCD/publications/wholechild/wscc-a-collaborative-approach.pdf>

SCHOOL NURSES IN THE U.S.

School nurses are licensed nurses who work in public and private schools and use evidence-based practice to promote individual and population-based student health, provide care coordination, advocate for quality student-centered care, and advance academic success. School nurses are leaders who bridge health care and education, and collaborate to help create healthy communities. NASN recommends students have daily access to, at a minimum, a full-time baccalaureate-prepared registered nurse (RN).

Percentage of Schools with School Nurse Coverage



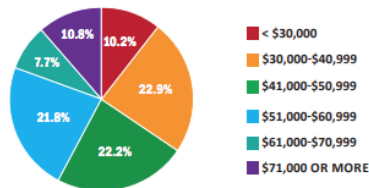
- 35.3% of schools employ part-time school nurses (< 35 hours)
- 39.3% of schools employ full-time school nurses (> 35 hours)
- Across the country 25.2% of schools did not employ a school nurse

Employer/Funding

The majority of school nurses are employed by education and funded from regular/special education funds. Other funding for school nurses include health department, local organizations, federal, and state organizations.



Average Salary for RN School Nurses



National Average RN salary ranges from \$63,944* - \$66,973**

*The U.S. nursing workforce: Trends in supply and education (2013). [Bethesda, Md.]: Health Resources and Services Administration. Bureau of Health Professions.

**The Registered Nurse Population (2010). [Bethesda, Md.]: Health Resources and Services

Race/Ethnicity/Gender:

98.4% Female; 86.9% White; 4.8% Black/African American; 1.4% Asian; 4% Hispanic/Latina; 2.2% multiple; <1 American Indian/Alaskan Native and Hawaiian

Rev. 5/17

Majority of U.S. teens worry a shooting could happen at their school

% of teens saying they are ____ about the possibility of a shooting happening at their school

	Very worried	Somewhat worried	NET
All teens	25	32	57
Boys	22	29	51
Girls	28	35	64
White	20	31	51
Black	27	34	60
Hispanic	37	36	73

Note: Whites and blacks include only single-race non-Hispanics. Hispanics are of any race. Figures may not add to net total due to rounding.

Source: Survey of U.S. teens ages 13 to 17 conducted March 7-April 10, 2018.

PEW RESEARCH CENTER

2018 TOTALS School Shootings



Decker, S., & Blad, E. (2019, June 14)

Graf, N., (2018, April 18)



NATIONAL SCHOOL HEALTH DATA SET:
EVERY STUDENT COUNTS!



<https://www.nasn.org/nasn/research/everystudentcounts>

'Those familiar with the nurses are amazingly impressed by the quality of their work and the initiative they take, not only in their profession but in the social problems so intimately identified with their service.'

- LILLIAN WALD



- A school nurse in every building, every day.
- Funding for population-based and community-based nursing practice, including research to guide our practice.
- Prioritize school nursing services by developing collaborative models of care to include clinical and community providers.
- Electronic Health Record Exchange
- National Immunization Registry
- School nurses need to be life-long learners and have open access to evidence-based research.

References

[Decker, S., & Blad, E. \(2019, June 14\). School Shootings This Year: How Many and Where. Retrieved from https://www.edweek.org/ew/section/multimedia/school-shootings-this-year-how-many-and-where.html](https://www.edweek.org/ew/section/multimedia/school-shootings-this-year-how-many-and-where.html)

[Graf, N., & Graf, N. \(2018, April 18\). Majority of teens worry about school shootings, and so do most parents. Retrieved from https://www.pewresearch.org/fact-tank/2018/04/18/a-majority-of-u-s-teens-fear-a-shooting-could-happen-at-their-school-and-most-parents-share-their-concern/](https://www.pewresearch.org/fact-tank/2018/04/18/a-majority-of-u-s-teens-fear-a-shooting-could-happen-at-their-school-and-most-parents-share-their-concern/)

[Managing Chronic Health Conditions in Schools: The Role of ... \(n.d.\). Retrieved from https://www.cdc.gov/healthyschools/chronic_conditions/pdfs/2017_02_15-FactSheet-RoleOfSchoolNurses_FINAL_508.pdf](https://www.cdc.gov/healthyschools/chronic_conditions/pdfs/2017_02_15-FactSheet-RoleOfSchoolNurses_FINAL_508.pdf)

[Maughan, E.D. \(2018\). School nurses: An investment in student achievement. *Phi Delta Kappan* 99 \(7\), 8-14.](#)

Wang, L.Y., Vernon-Smiley, M., Gapinski, M.A., Desisto, M., Maughan, E., & Sheetz, A. (2014). Cost-benefit study of school nursing services. *JAMA Pediatrics*, 168 (7), 642.

Willgerodt, M.A., Brock D., & Maughan, E. (2018). School nurses in the US: The National School Nurse Workforce Study. *Journal of School Nursing*.