

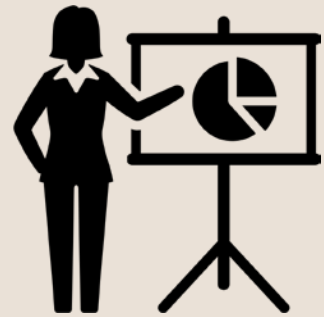
The Pipeline of Pediatric Disaster Scientists

Betty S. Lai
BOSTON COLLEGE

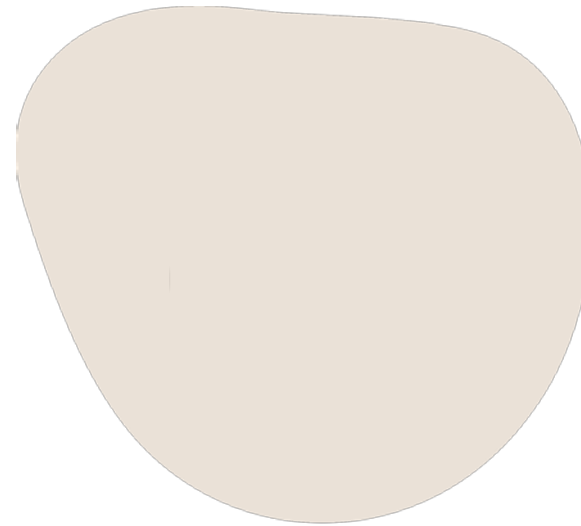


August
2022

ISSUES



Timeline

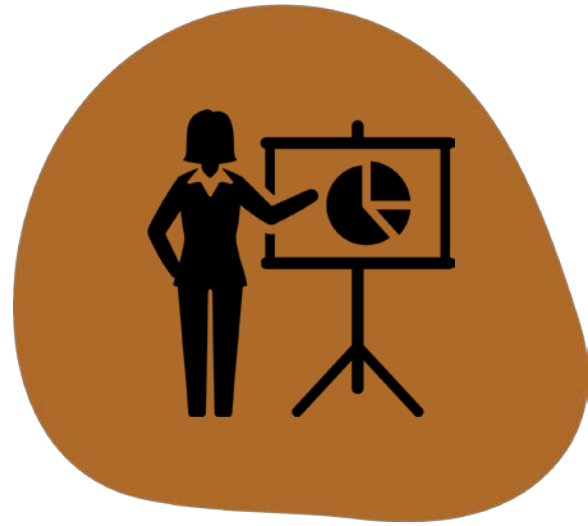


Distribution

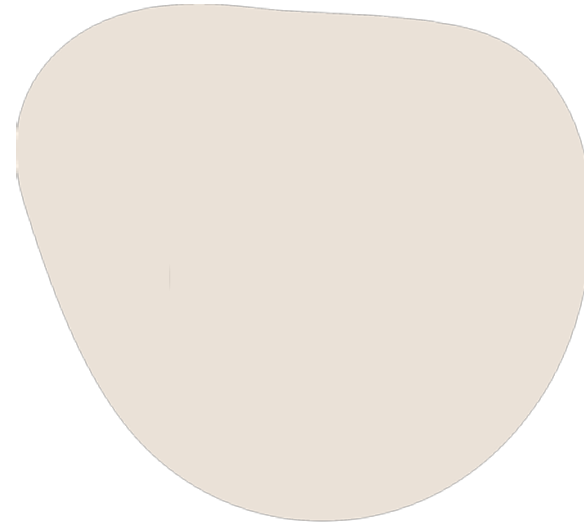


Insight

ISSUES



Timeline



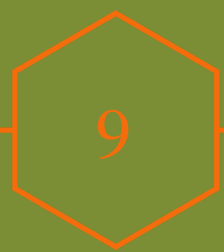
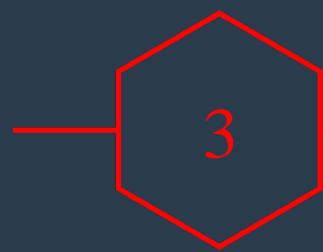
Distribution



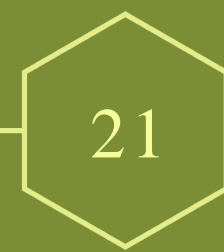
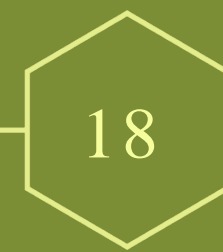
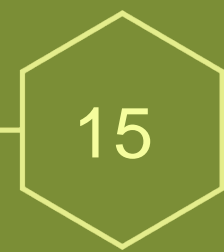
Insight



- Conceptualize the study.
- Develop relationships with schools.
- IRB approval.
- School approval.
- Parental consent.
- Child assent.
- Travel to study site.



12



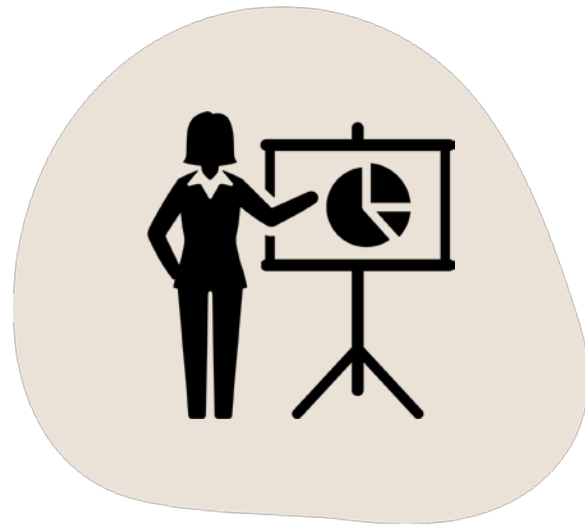
1.5 years



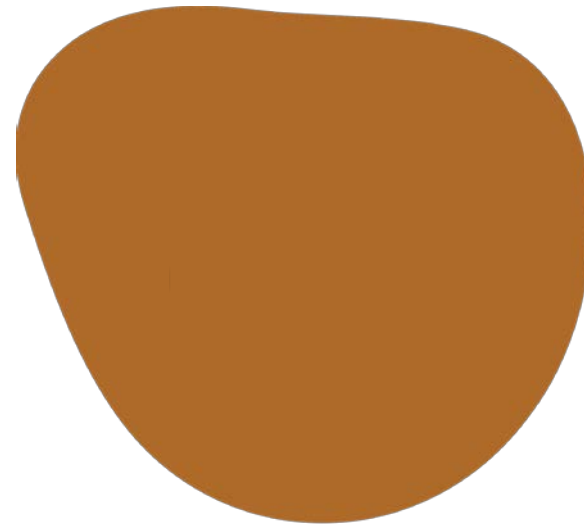
SUGGESTIONS

- Disaster fellowships.
- Rapid awards and innovations in mechanisms.

ISSUES



Timeline



Distribution



Insight

[Ginther et al. \(2011\)](#)

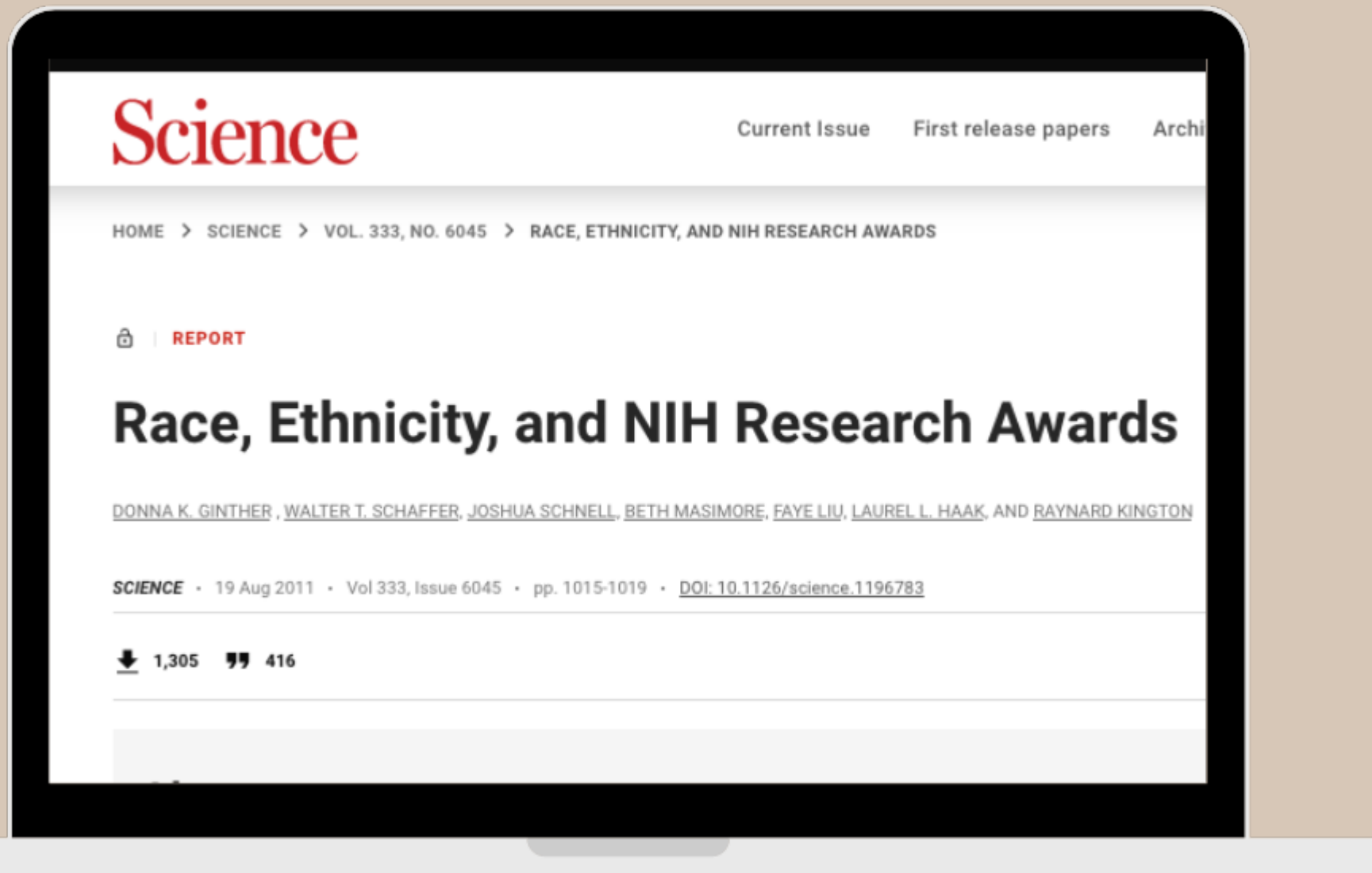
Examined 83,188 NIH R01 applications.

Compared to White Applicants:

- Asian applicants were 4% less likely to be funded.
- Black or African-American applicants were 13% less likely to be funded.

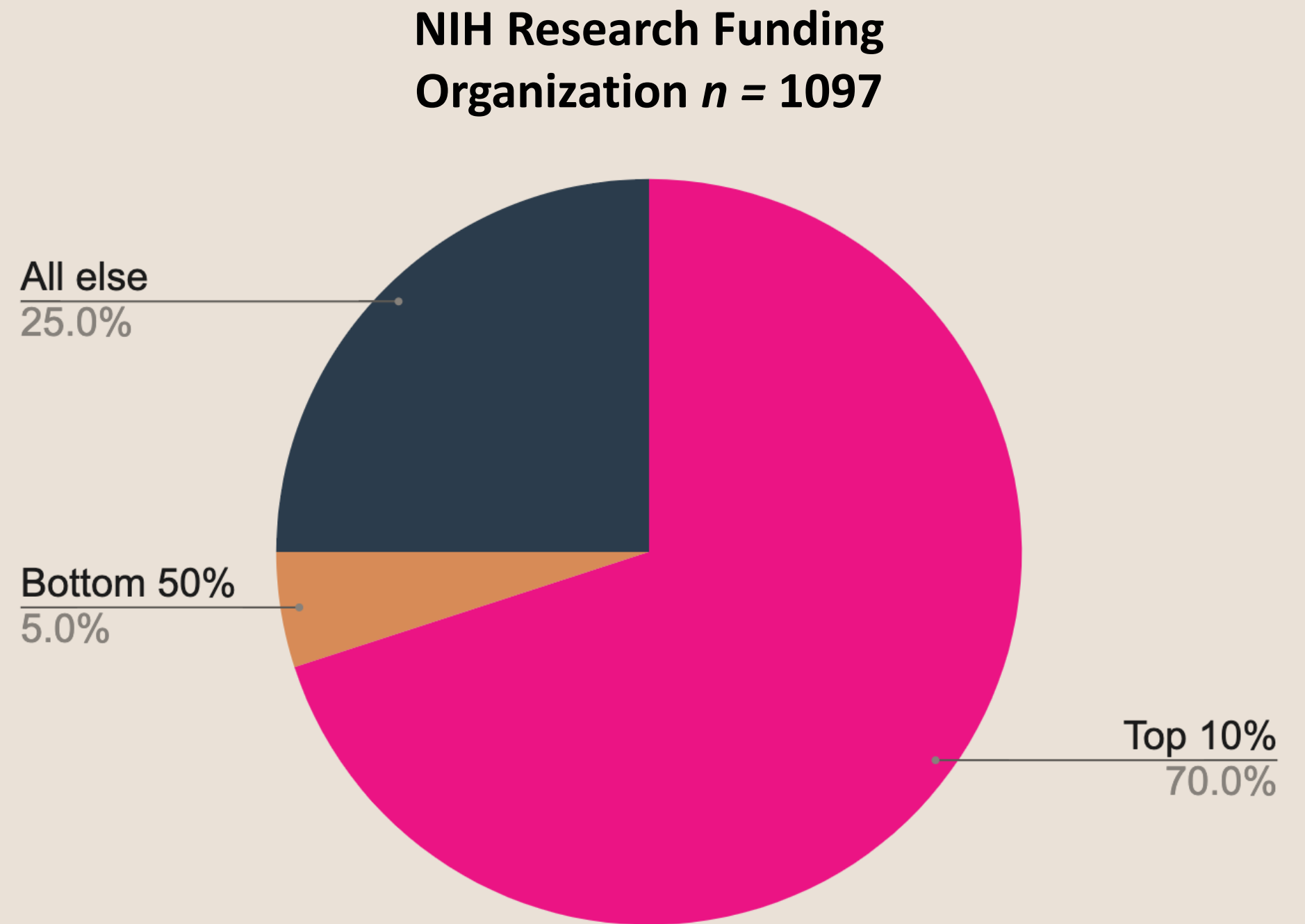
Follow-up Study in 2018:

- Black applicants less likely than white applicants to be at a top 100 NIH funded institution.



Funding Flows to Insiders

- The top 10% of organizations receives 70% of the research funding.
- The bottom half receives less than 5%.



SUMMARY

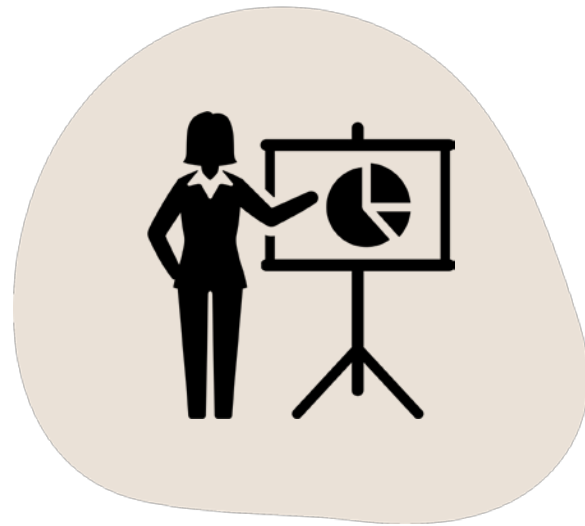
Initiatives

NIH's Next Generation Researchers Initiative.

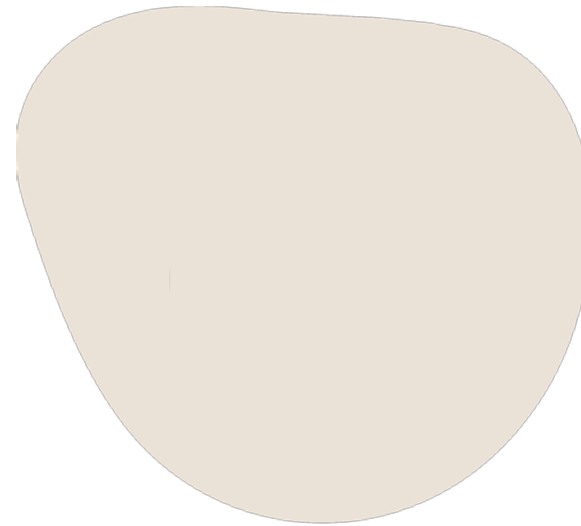
Actions

- Increase professional networks.
- Decrease service demands.
- Encourage resubmissions.

ISSUES



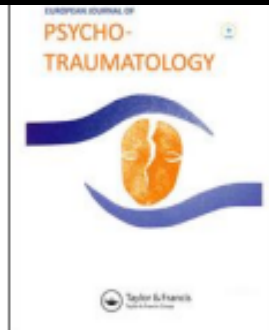
Timeline



Distribution



Insight



European Journal of Psychotraumatology

ISSN: (Print) (Online) Journal homepage: <https://www.tandfonline.com/loi/zept20>

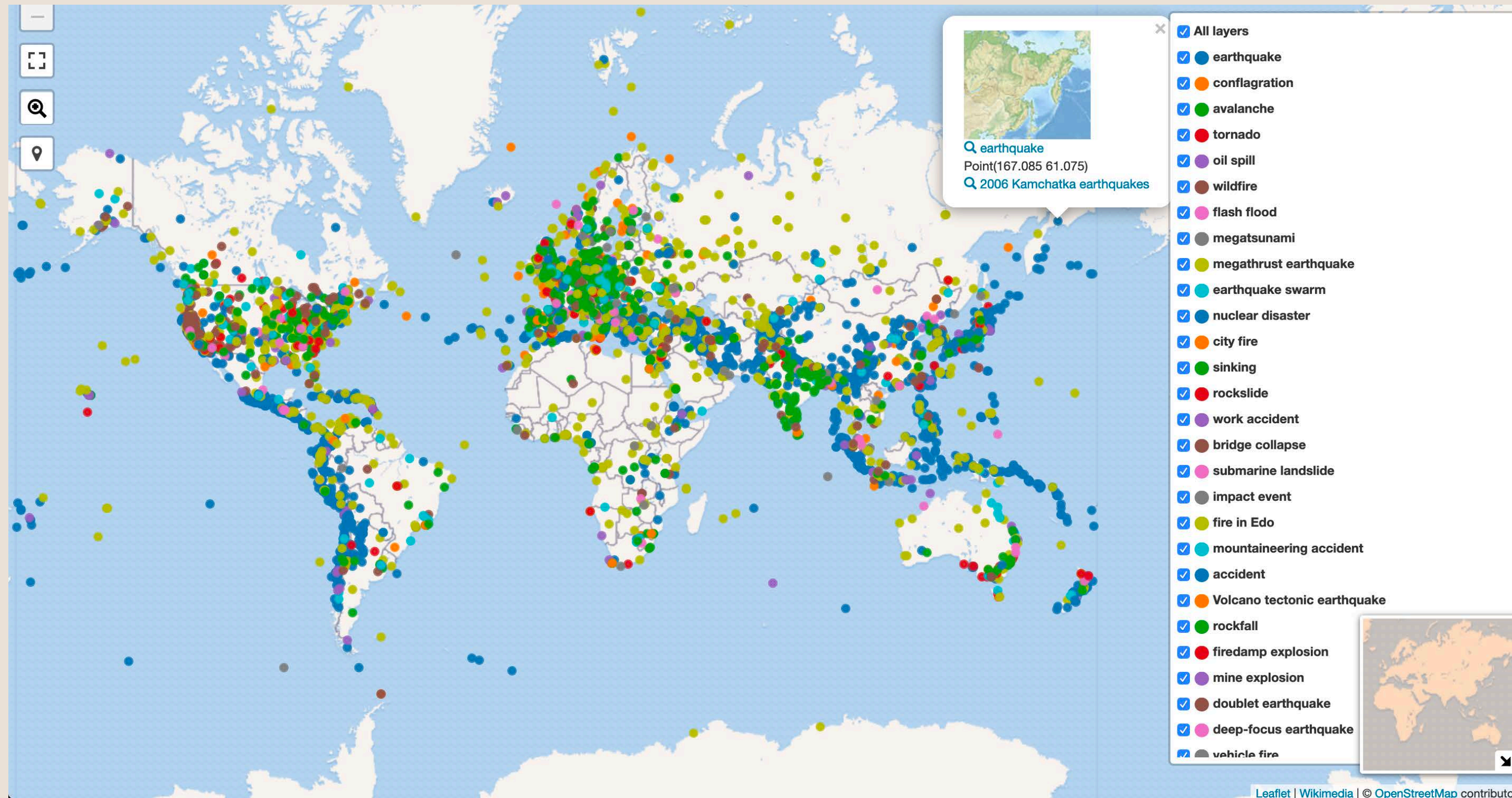
Working towards inclusive and equitable trauma treatment guidelines: a child-centered reflection

Eva Alisic , Jessica Roth , Vanessa Cobham , Rowena Conroy , Alexandra De Young , Gertrud Hafstad , Tobias Hecker , Rachel Hiller , Nancy Kassam-Adams , Betty Lai , Markus Landolt , Meghan Marsac , Soraya Seedat & David Trickey

To cite this article: Eva Alisic , Jessica Roth , Vanessa Cobham , Rowena Conroy , Alexandra De Young , Gertrud Hafstad , Tobias Hecker , Rachel Hiller , Nancy Kassam-Adams , Betty Lai , Markus Landolt , Meghan Marsac , Soraya Seedat & David Trickey (2020) Working towards inclusive and equitable trauma treatment guidelines: a child-centered reflection, European Journal

- Reviewed 14 child trauma guidelines.
- 121 experts in 94 countries.
- International guidelines center on a white Western lens.

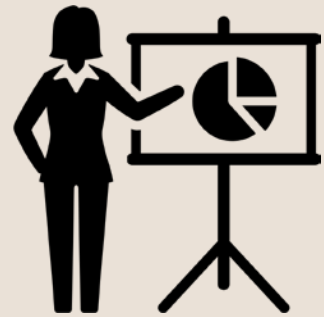
Map of Exposure to Disasters



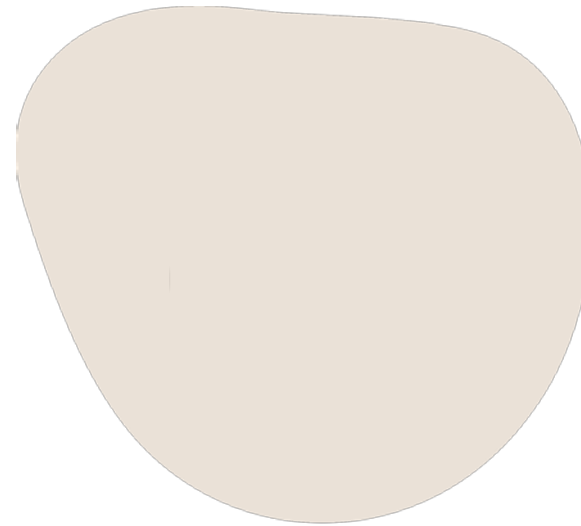
A diverse group of business professionals in a modern office setting. In the foreground, a man with glasses and a beard is smiling while typing on a laptop. Behind him, a woman with curly hair is also smiling and gesturing with her hand. Further back, a man and a woman are looking at the laptop screen. On the left, an older woman with short white hair and glasses is smiling and holding a pen. The background shows a bright office with large windows and other people working.

We need to hear
and fund our
best ideas.

ISSUES



Timeline



Distribution



Insight