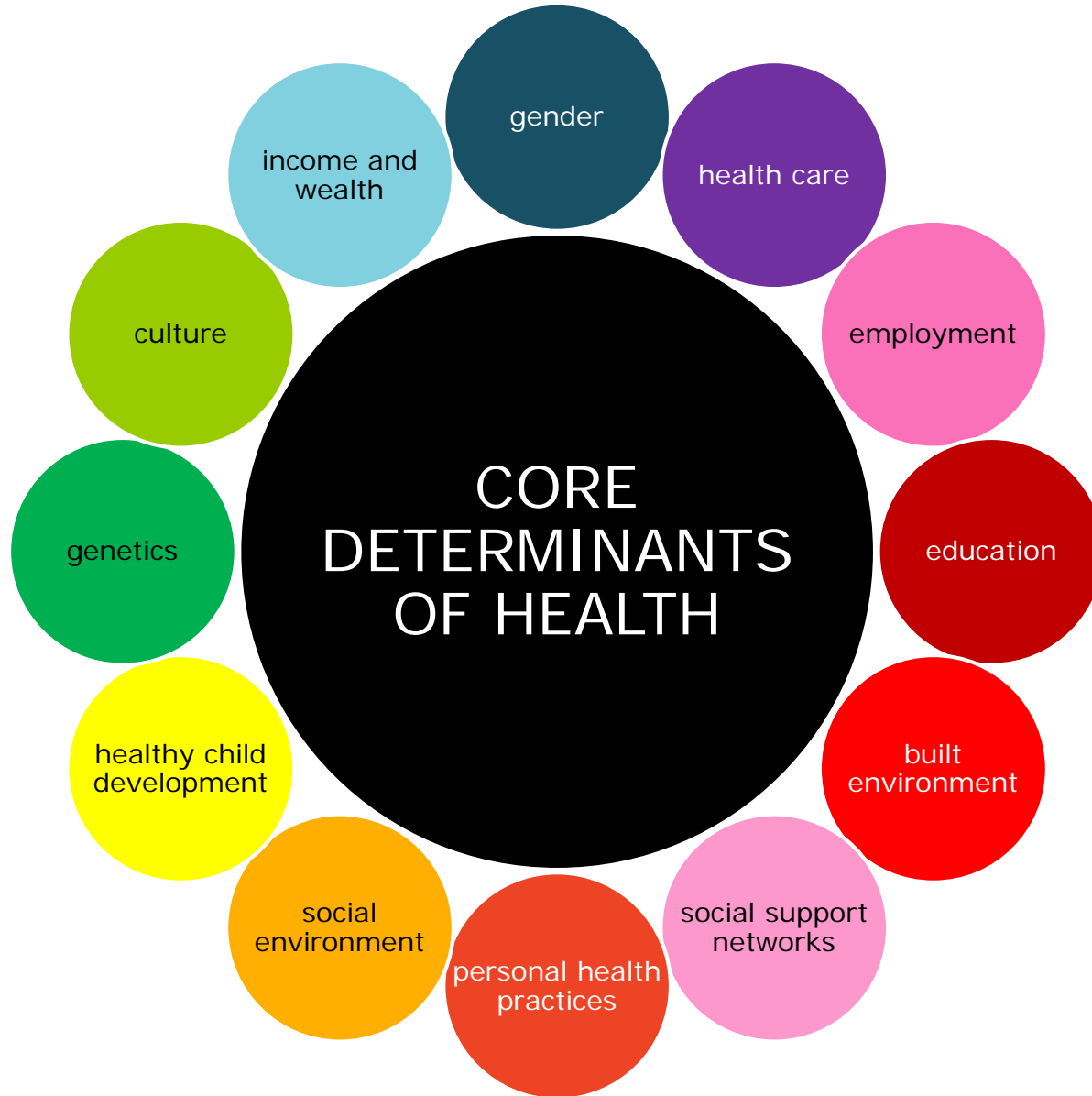


Nurses as cross-sector data sharing champions

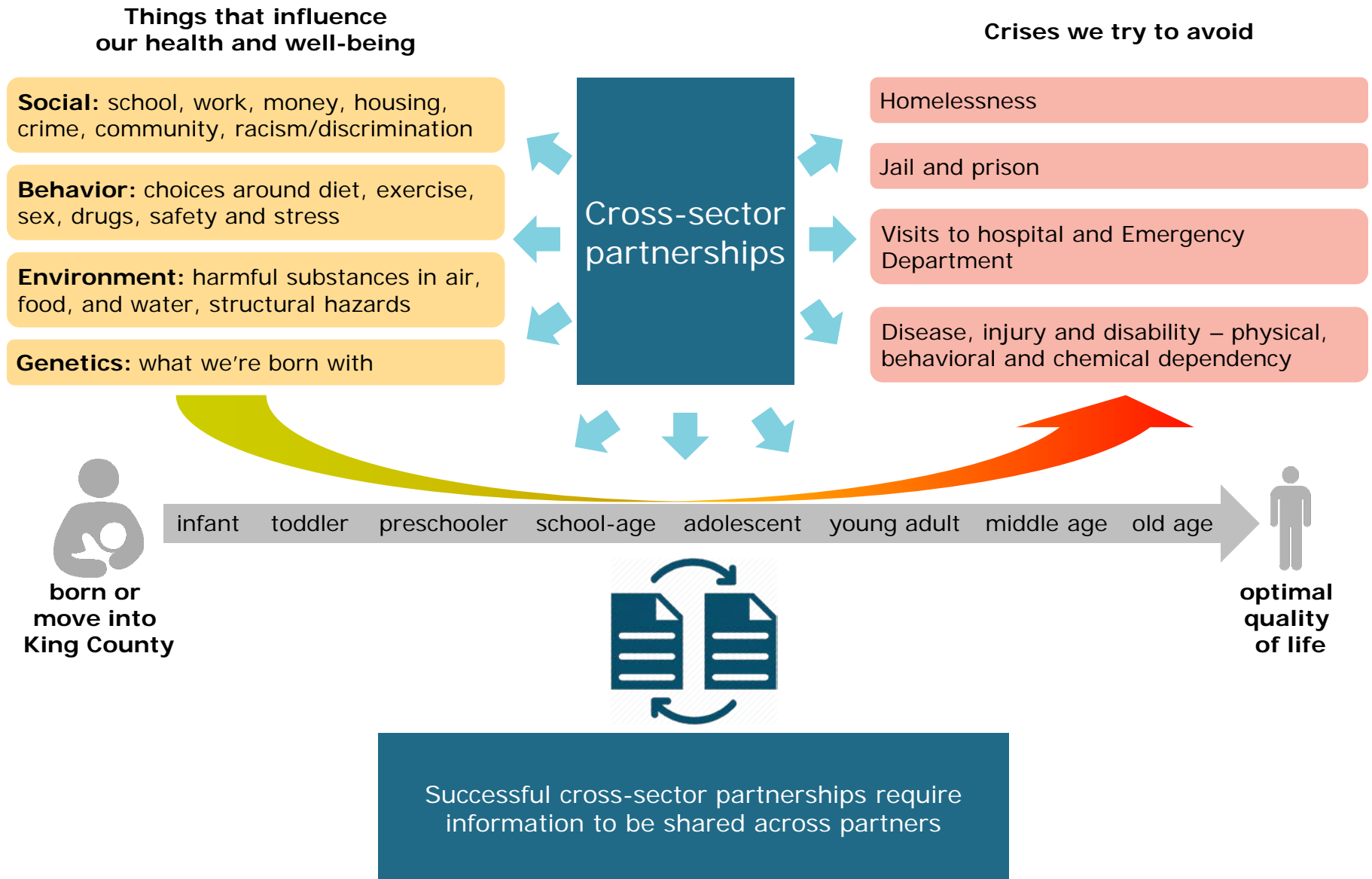
Future of Nursing 2030 Seattle Town Hall:
Technology to Inform Practice and Advance Equity

Health equity, cross-sector data sharing, and nurses

- Barriers to improving the health and well-being of the U.S. population include:
 - ▣ Challenges in addressing social determinants of health
 - ▣ Fragmentation in delivery of health care, social, and public health services
- Many cross-sector partnerships aim to address health and social needs across clinical and community settings:
 - ▣ Successful partnerships typically require information sharing
 - ▣ Information sharing may be more difficult when including non-clinical partners
- Focus of this presentation:
 - ▣ How cross-sector data sharing can advance health equity
 - ▣ Potential role of nurses in supporting cross-sector data sharing

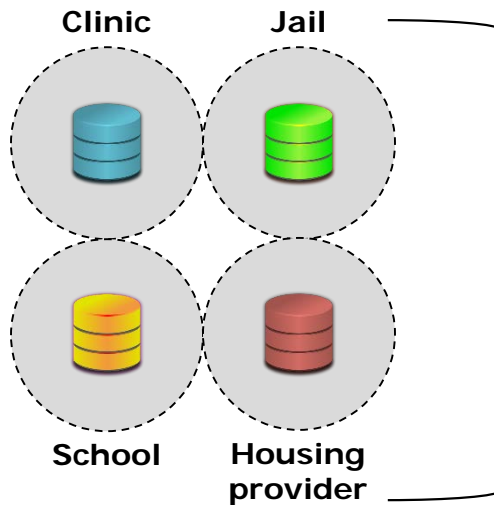


In King County, cross-sector partnerships aim to improve health and well-being throughout the life course



Data fragmentation is a barrier to advancing health equity

Data fragmentation =
data systems are program
specific and largely do not
talk with each other



Health & human service providers struggle to:

- Access information about the whole person
- Coordinate services across delivery systems

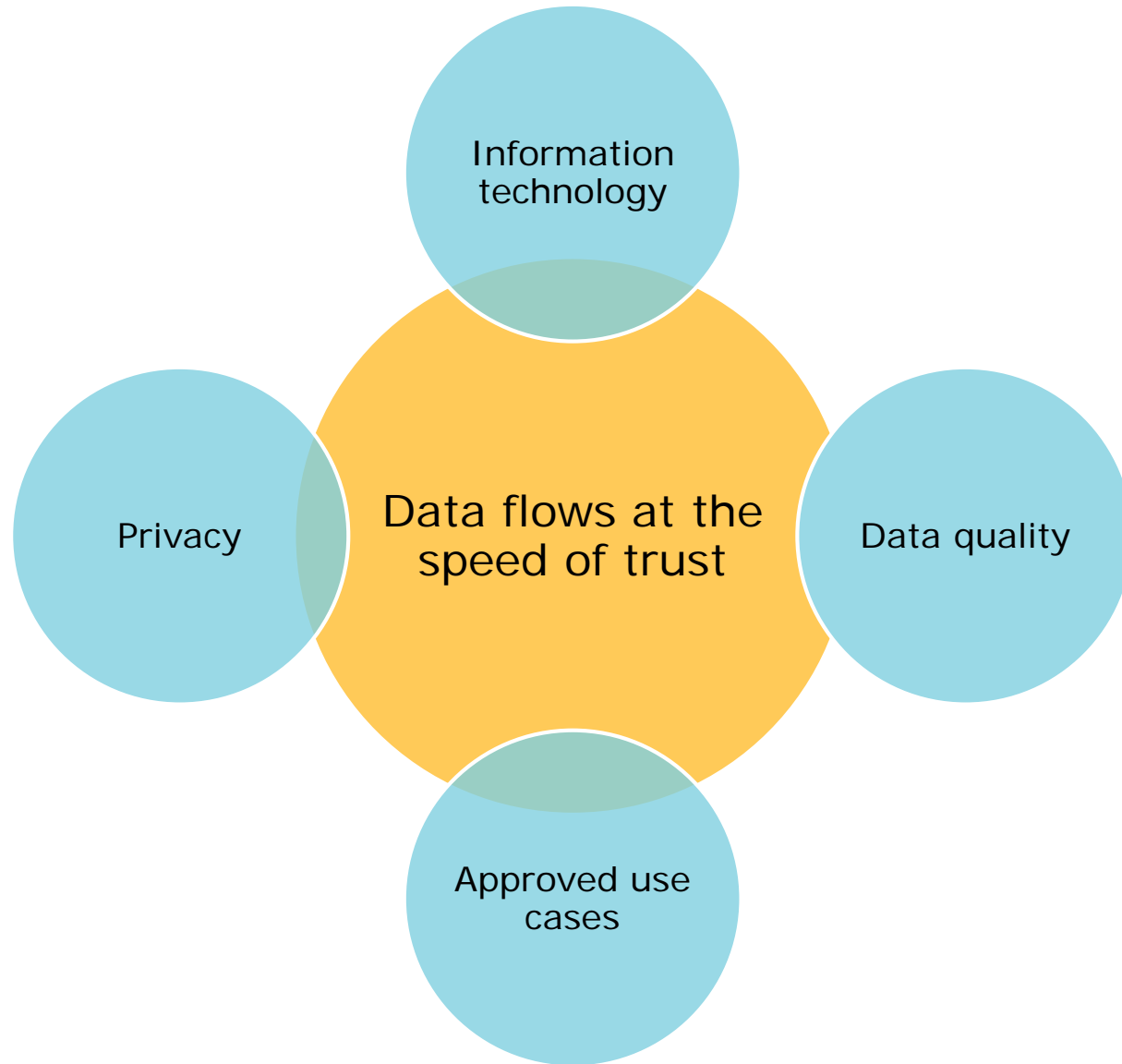


Population health analysts struggle to:

- Access information about the whole community
- Measure progress towards elimination of health and social disparities

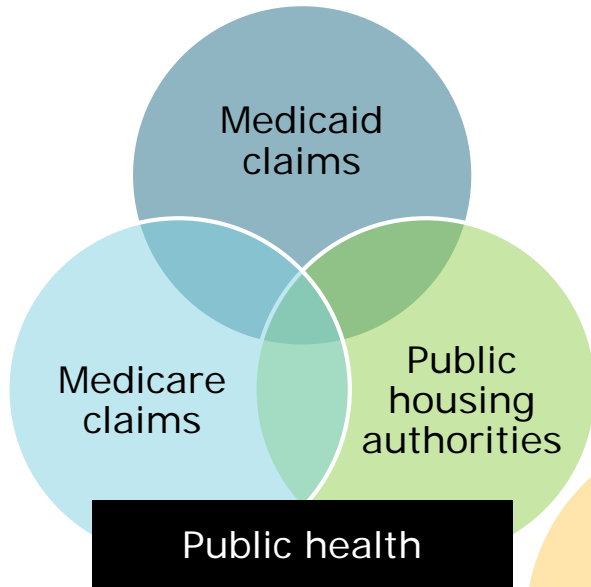


Cross-sector data sharing is both an art and a science

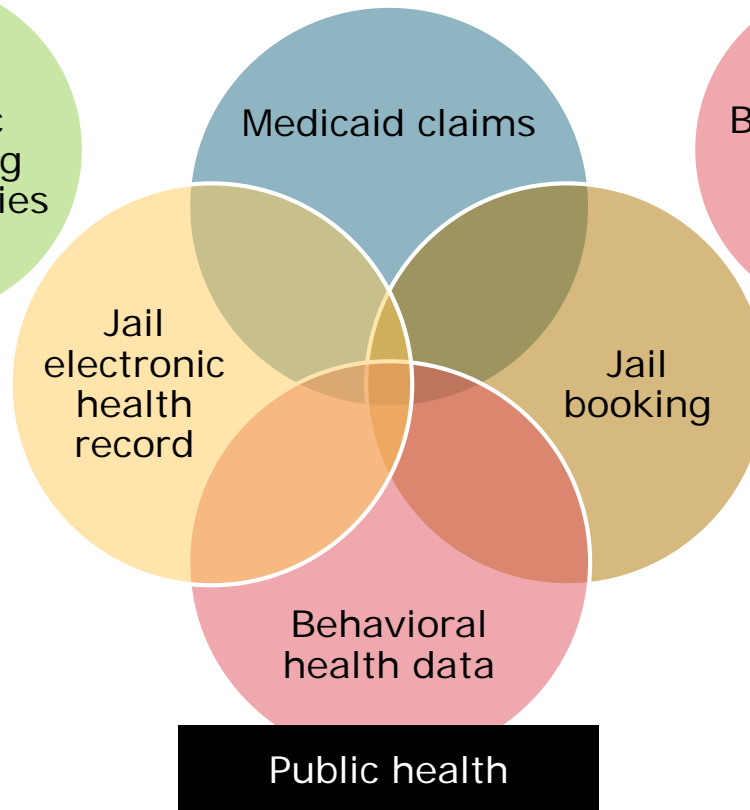


Cross-sector data sharing in King County

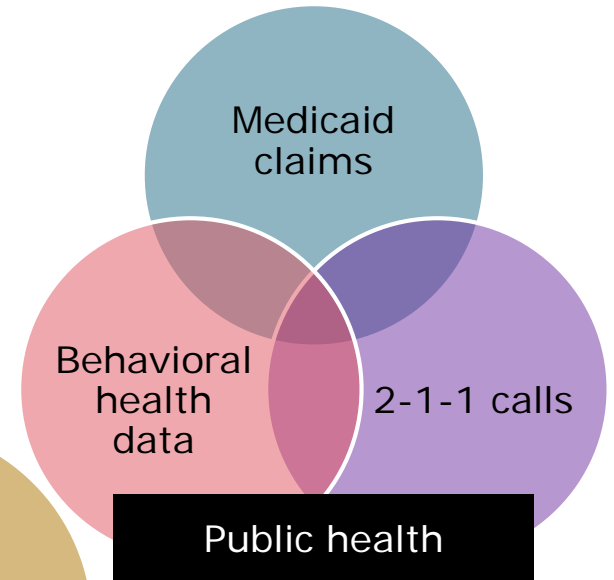
Health & housing partnership



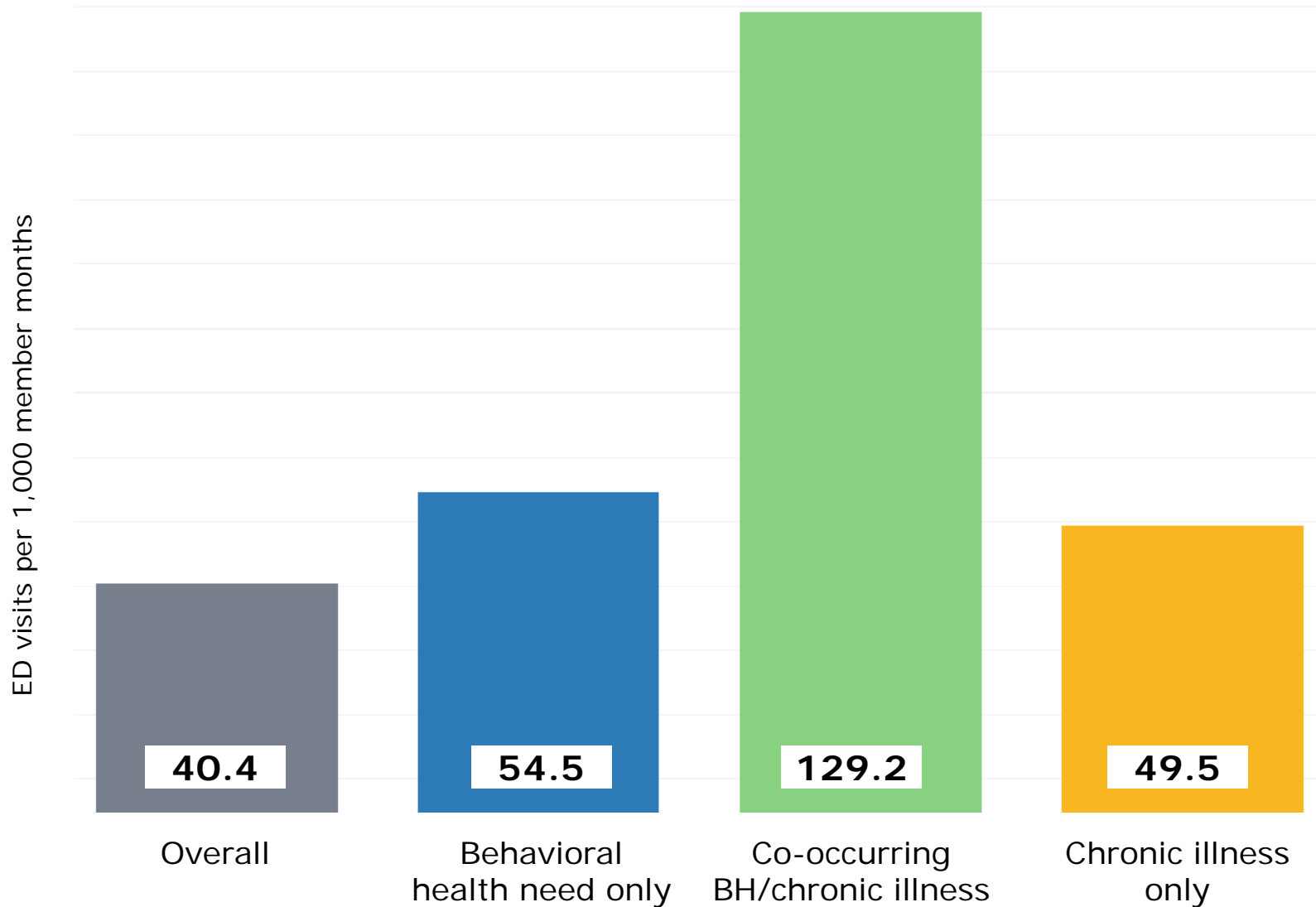
Jail-based continuity of care program evaluation



Accountable Community of Health

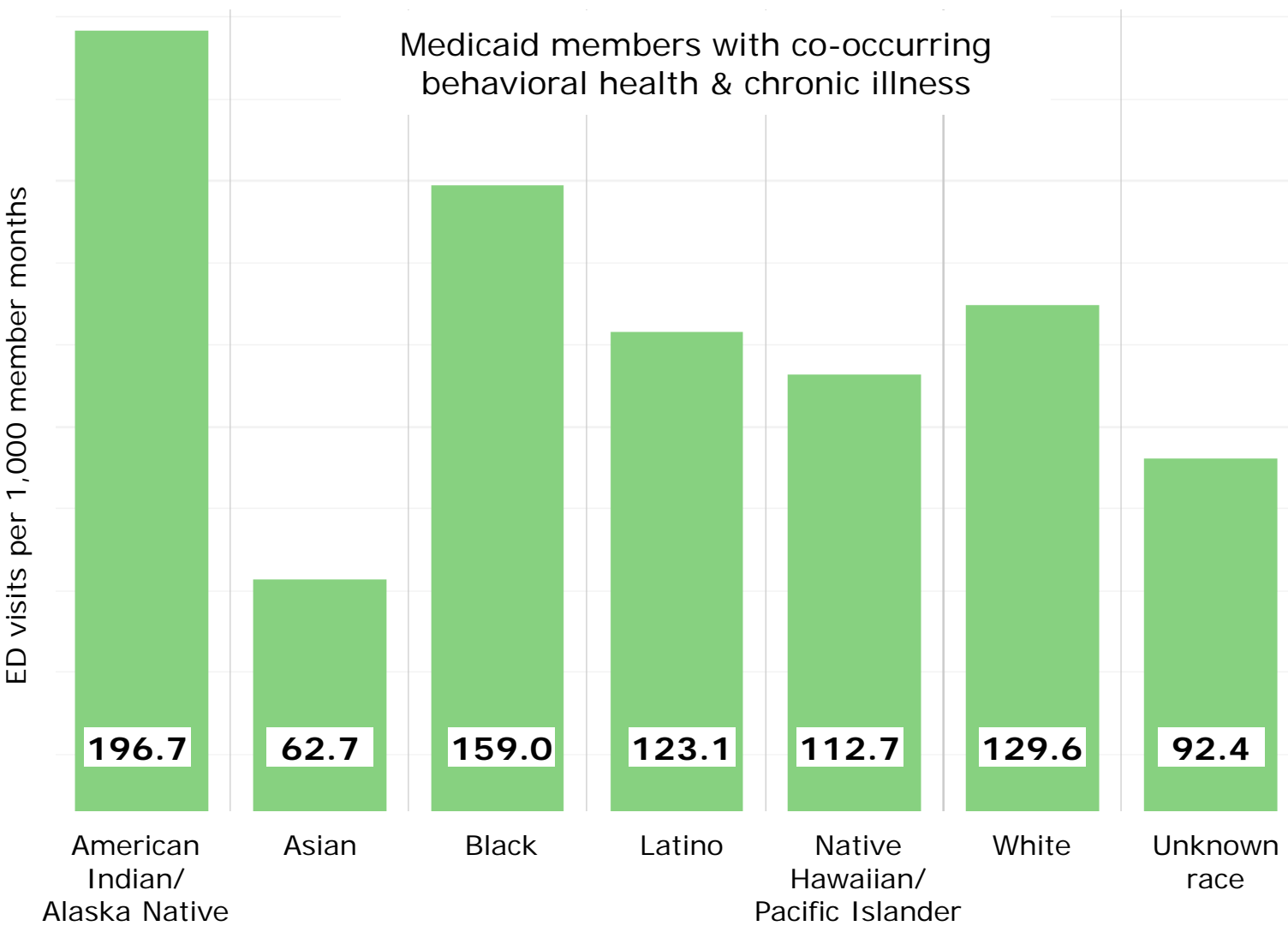


Relationship between health status and emergency department use



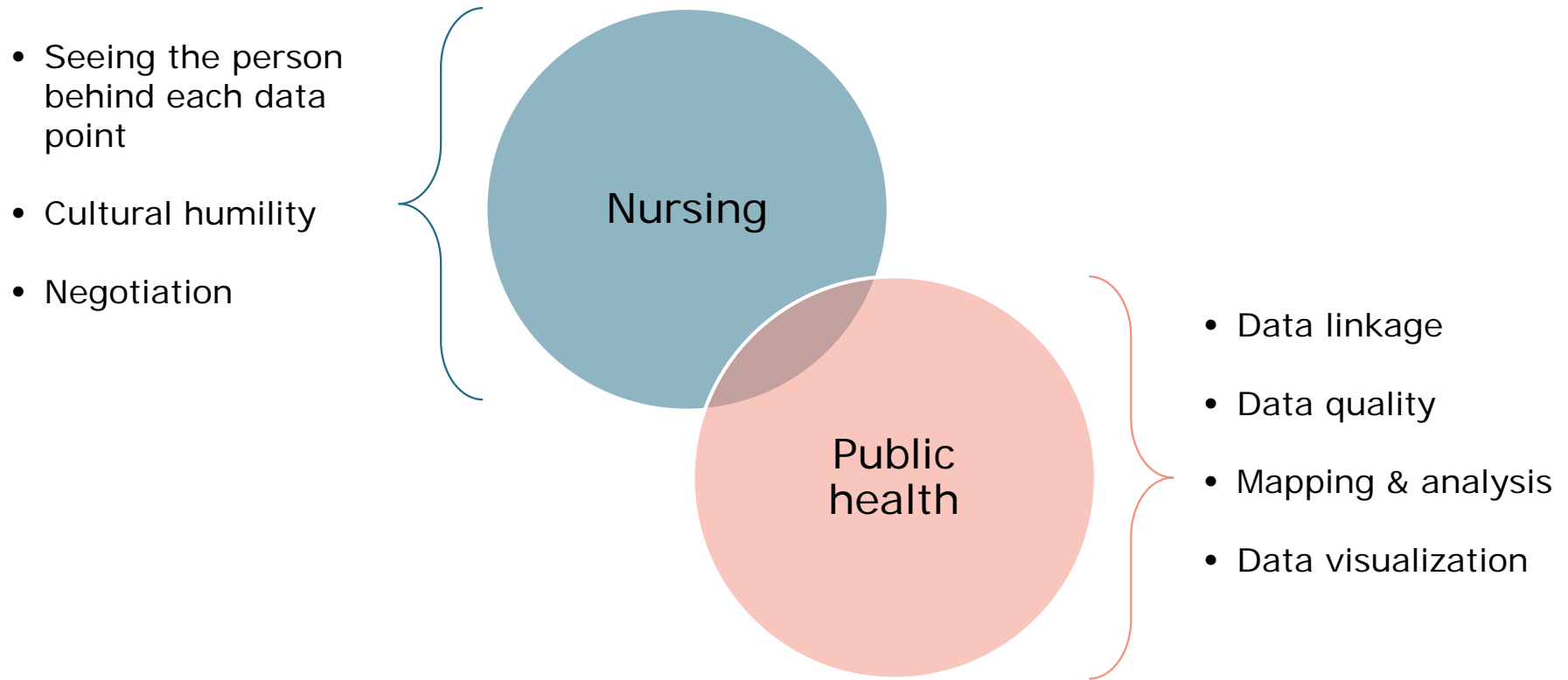
Source: Medicaid claims data, WA Health Care Authority (HCA). This data product has not been reviewed or approved by HCA. Data shown are for King County Medicaid members for services received in 2017. Behavioral health includes mental illness and substance use disorder. Chronic illness includes asthma, chronic obstructive pulmonary disease, diabetes, chronic kidney disease, heart failure, hypertension and ischemic heart disease.

Health status-related disparities widen when considering race



Source: Medicaid claims data, WA Health Care Authority (HCA). This data product has not been reviewed or approved by HCA. Data shown are for King County Medicaid members for services received in 2017. Behavioral health includes mental illness and substance use disorder. Chronic illness includes asthma, chronic obstructive pulmonary disease, diabetes, chronic kidney disease, heart failure, hypertension and ischemic heart disease.

Building trust: Drawing from nursing and public health practice



Key message

As expert negotiators with a practice grounded in person-centered care and cultural humility, nurses can serve as effective cross-sector data sharing champions

How do we support more nurses to fulfill this role?

- 1 Financial support for nurses to attend public health educational programs
- 2 Academic partnerships between nursing schools and public health systems
- 3 Recruitment of nurses to lead cross-sector partnerships, with a focus on partnerships with social service and public health systems

For more information...

Eli Kern MPH RN | Epidemiologist
Assessment, Policy Development & Evaluation
Public Health - Seattle and King County
Phone: 206.263.8727 | Email: eli.kern@kingcounty.gov

Explore HealthierHere data: <https://www.healthierhere.org/our-impact/>