

**National Academy of Medicine  
Future of Nursing 2030  
Seattle Town Hall  
August 7, 2019**

Molly K. McCarthy MBA, BSN, RN-BC  
National Director, US Provider Industry &  
Chief Nursing Officer

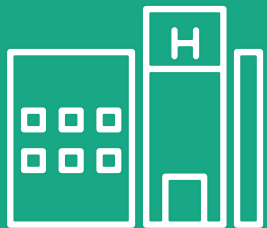


[industry.microsoft.com](https://industry.microsoft.com)



# 5 Trends

DRIVING  
INTELLIGENT  
HEALTH



## Rapidly emerging technologies



**1 GB**

By 2020, on **average of 1GB of health-related data** will be created daily per person.<sup>1</sup>

## Aging populations



**2 billion**

people in 2050 will be over 60 years old, representing an increase of 10% over today's aging population.<sup>3</sup>

## Shortage of healthcare workers



**14 million**

healthcare worker positions will go unfilled in 2030 as the world experiences a **global shortage of healthcare workers**.<sup>5</sup>



**\$6.2 billion**

is lost due to data breaches to the health industry every year, leading to increased **pressure in security and compliance**.<sup>2</sup>

## Growing cybersecurity threats



**97%**

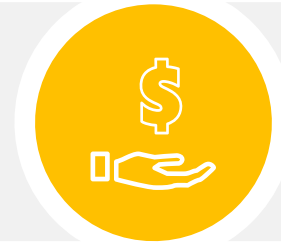
of patients have **raised expectations** around their healthcare, expecting every health institution to have access to their full medical history.<sup>4</sup>

## Increasing patient expectations



# Digital transformation in health

Technology enabled care, health promotion and disease prevention that advances the quadruple aim.



## Better Health

Improve population health

## Better Care

Improve the experience of patient care

## Lower Cost

Reduce the per capita cost of care

## Clinician Well-being

Improve the clinician & team experience



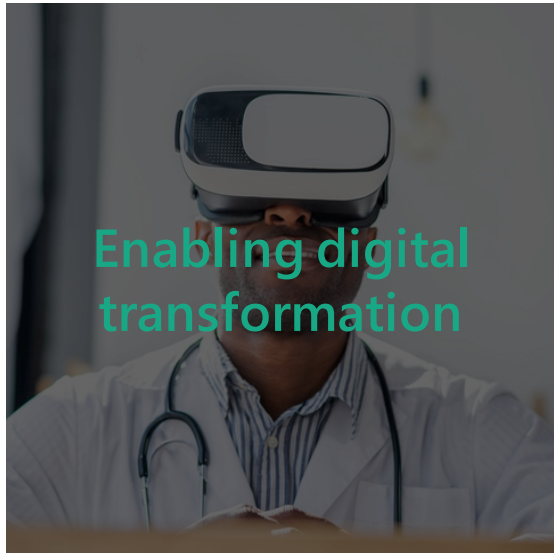
# AI in healthcare: maturity model

Leader	<b>Innovation:</b> Using SDoH to improve the health of individuals and populations	
Advanced	<b>Creation:</b> New AI solutions, e.g. patient and consumer experience and empowerment	
Intermediate	<b>Optimization:</b> Adding AI to existing systems, e.g. diagnostics, using AI for computer vision, including chronic and rare diseases.	
Basic	<b>Conversion:</b> BI to AI, e.g. LOS, forecasting, reduce readmissions, operations, financial, etc.	
Foundational	<b>Implementation:</b> Put AI Datalake, Data Estate, or AI data platform in place	<b>Narrow:</b> Seeking specific use cases, solutions, models <b>Broad:</b> Seeking general use cases, solutions, models





# How do we tackle the challenge?



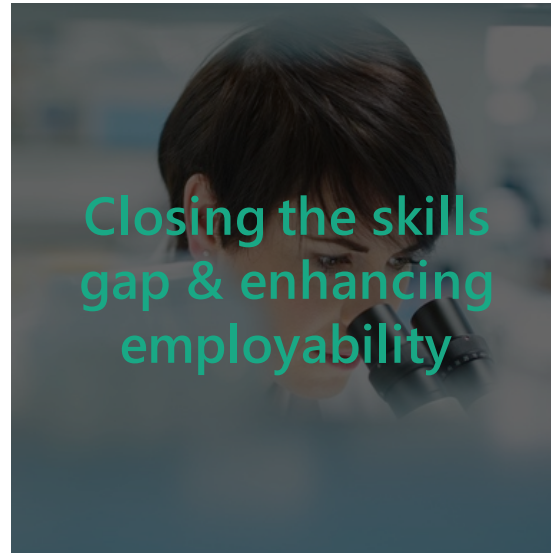
Enabling digital transformation

Improving health of populations through AI-driven consumer care.



Building coalitions for responsible innovation

Partnering with key groups to form and foster lasting and responsible oversight.



Closing the skills gap & enhancing employability

Retraining nurses, physicians and scientists to broaden valuable skill sets.



Creating sustained societal impact

Improving access to and quality of healthcare, health literacy, and life expectancy.





I can see every piece of data within two minutes as it goes from the table to the cloud. We can catch things before parents do, because we're the ones who are medically trained, and that's the way it should be, to reduce the burden on the parents. ”

— Lori Erickson

Nurse practitioner, Children's Mercy Hospital, Kansas city, Missouri

Improve access and  
outcomes to care.

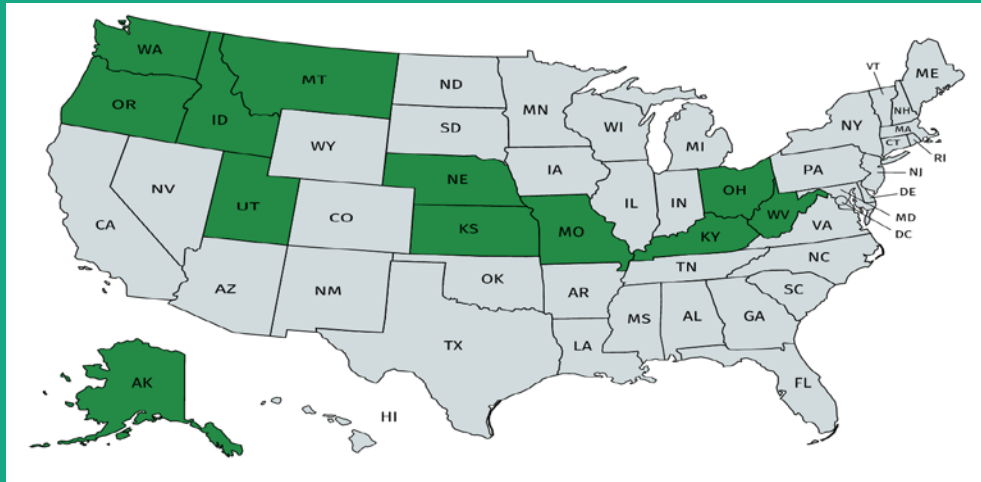


Children's Mercy



Children's Mercy

130+ Patients from 12 States





## Children's Mercy Kansas City Wins 2016 Magnet<sup>®</sup> Prize

SILVER SPRING, MD — The American Nurses Credentialing Center (ANCC) today announced Children's Mercy Kansas City, in Kansas City, Missouri, as the winner of the ANCC 2016 Magnet Prize<sup>®</sup> sponsored by Cerner, a global leader in health care technology.

The prize recognizes innovative nursing programs and practices in ANCC



[www.childrensmercy.org/champ](http://www.childrensmercy.org/champ)

Bingler, M., Erickson L.A., Reid, K.J., Lee, B., Apperson, J., O'Brien, J., Goggin, K., & Shirali, G.S (2018). Interstage Outcomes in Infants with Single Ventricle Heart Disease Comparing Home Monitoring Technology to Three-Ring Binder Documentation: A Randomized Crossover Study, *World Journal for Pediatric and Congenital Heart Surgery*, 9(3), 305-314. DOI: 10.1177/2150135118762401

[champapp@cmh.edu](mailto:champapp@cmh.edu)



# Thank you

- @MSFTMollyRN
- At [microsoft.com/health](https://microsoft.com/health)
- Digital transformation in health  
[www.HealthDigitalTransformation.com](https://www.HealthDigitalTransformation.com)
- Visit [AppSource](#) for health solutions
- Follow us on Twitter  
@Health\_IT (Microsoft in Health)

Improve  
outcomes



Empower  
care  
teams



Enable  
personalized  
care



Healthcare is at the core of Microsoft's mission