



**Deborah S. Levine (she/her)**  
**Director, LGBT YouthLink**



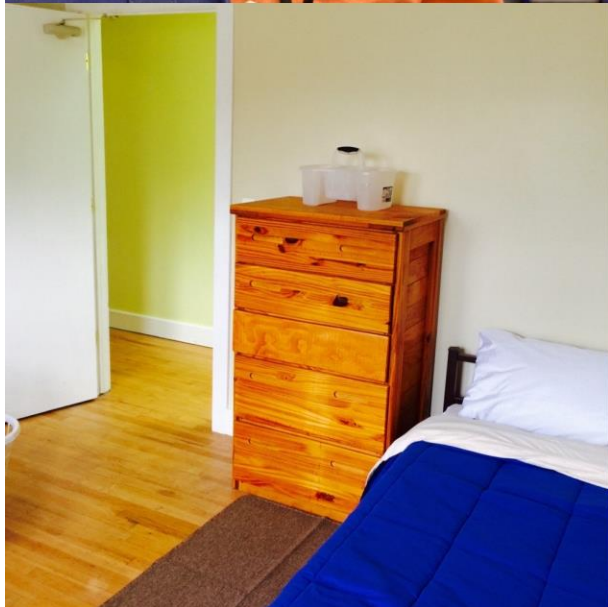
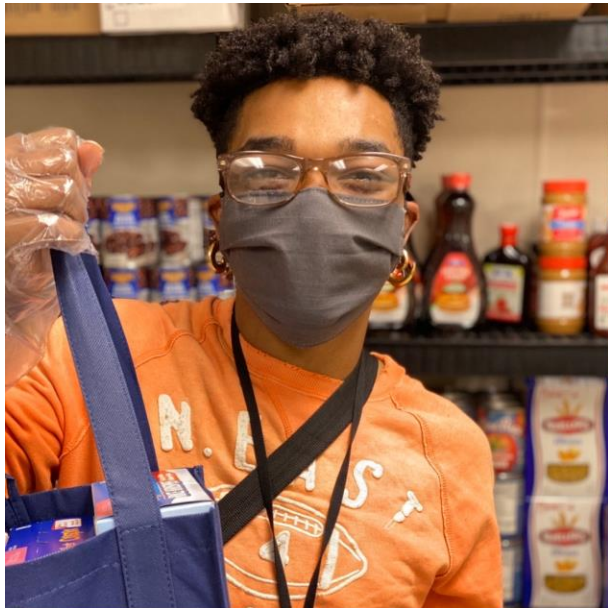






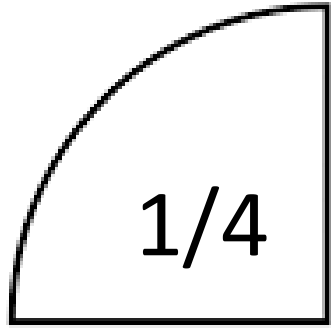
**LGBT**   
**YOUTHLINK**  
a program of CENTERLINK



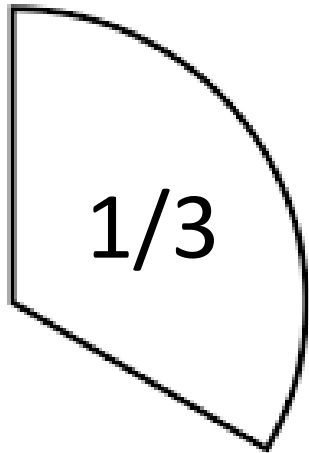








Rely solely on volunteers



Between 1 and 5 staff members



# Discord





"Q Chat has changed my life so much. I know for a fact that I wouldn't be here if it weren't for facilitators and everyone who goes to them."

"I rush to the chat whenever I get a text from Q Chat Space LOL."

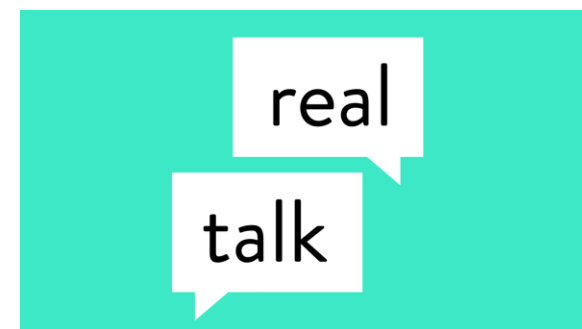
"Q Chat 100% has helped me find friends and more than friends and community and lots of very good things."

"My anxiety lately has been terrible, but Q Chats always make me feel better :))"



H O P E L Δ B









# Needed

- Evaluations of what centers are already doing
- Engaging community in the research
- Compensating participants and community centers
- Disseminating results back to the community



# Scaling



# Challenges

- Funding
- Training and professional development
- Local support in unsupportive communities



# Addressing inequities for LGBTQ youth of color



- Mental health counseling
- Sexual health care and testing
- GED and high school completion programs



- Job readiness and placement
- Meals



- Laundry services
- Case management
- Transitional housing
- Independent living programs



**THANK  
YOU!**