

# Health in All Policies:

## Reflections on California's Experience

Linda Rudolph, MD, MPH  
Public Health Institute

Institute of Medicine Roundtable on Population Health Improvement  
Washington, D.C.  
September 19, 2013



**climatehealthconnect**  
The Center for Public Health & Climate Change



# Health in All Policies

- collaborative approach to improving health of all people by incorporating health considerations into decision-making across sectors and policy areas
- decision-makers are informed about the health, equity, and sustainability consequences of policy options during policy development process
- policy outcomes reflect those consequences





ZIP CODE **95219**

Life Expectancy

**73**



**88**

ZIP CODE **92657**

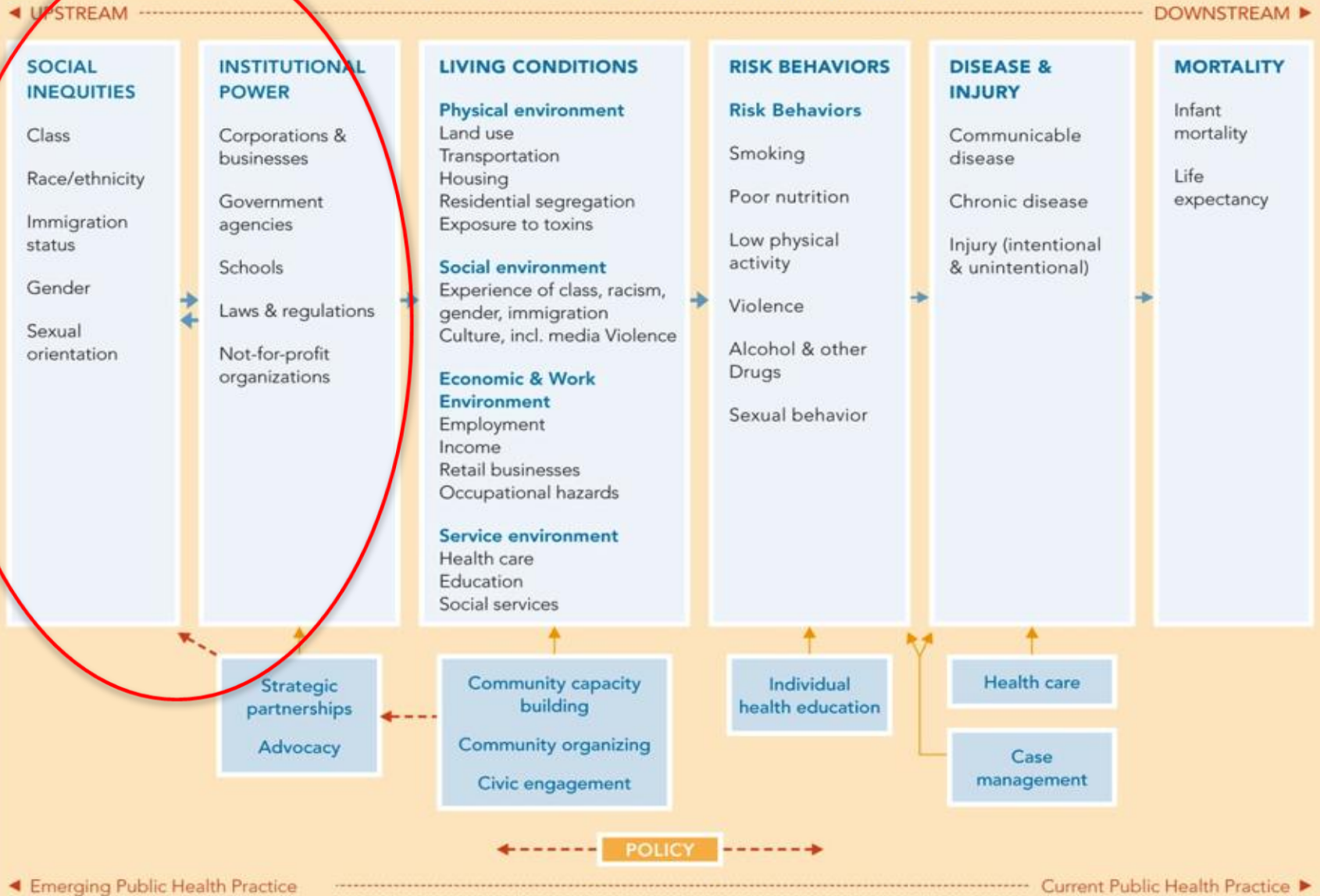
Life Expectancy

health  
happens  
here

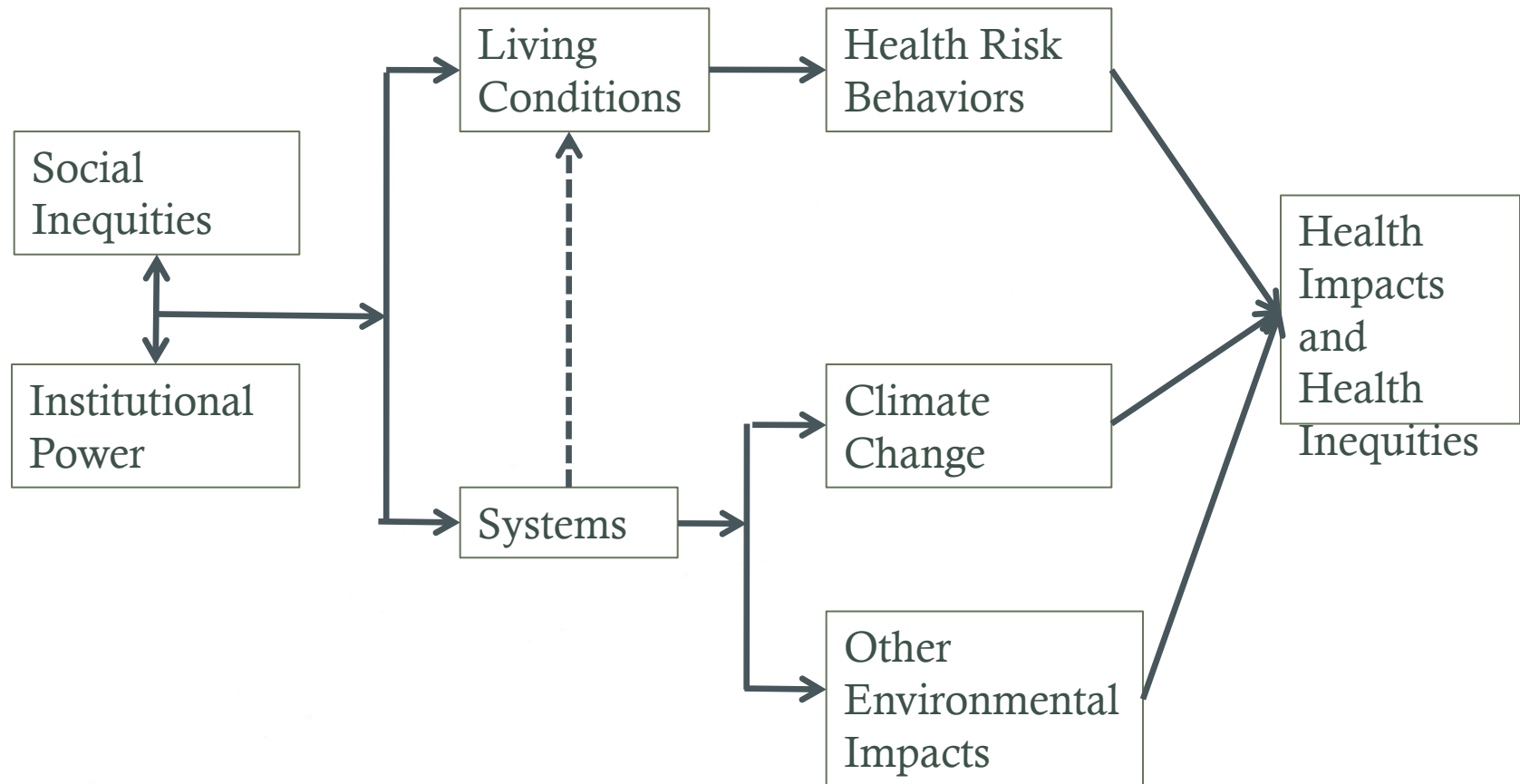


# A PUBLIC HEALTH FRAMEWORK FOR REDUCING HEALTH INEQUITIES

BAY AREA REGIONAL HEALTH INEQUITIES INITIATIVE



# Health, Equity, & Sustainability







**“Climate change is the biggest global health threat of the 21<sup>st</sup> century... The impacts will be felt all around the world – and not just in some distant future but in our lifetimes and those of our children.”**

**The Lancet**



USDA, Wikimedia Commons

NASA, Wikimedia Commons

Suat Emri, freedigitalphoto.net

# Key Elements of HiAP

- Health, equity, and sustainability
- Intersectoral collaboration
- Co-benefits
- Engage community & stakeholders
- Create structural or procedural change



Key elements: Health, Equity, & Sustainability

# What is a Healthy Community?

- Meets basic needs of all
  - Safe, sustainable, accessible and affordable transportation options
  - Affordable, accessible and nutritious foods and safe drinkable water
  - Affordable, high quality, socially integrated and location-efficient housing
  - Affordable, accessible and high quality health care
  - Complete and livable communities including quality schools, parks and recreational facilities, child care, libraries, financial services and other daily needs
  - Access to affordable and safe opportunities for physical activity
  - Able to adapt to changing environments, resilient, and prepared for emergencies
  - Opportunities for engagement with arts, music and culture
- Quality and sustainability of environment
  - Clean air, soil and water, and environments free of excessive noise
  - Tobacco- and smoke-free
  - Green and open spaces, including healthy tree canopy and agricultural lands
  - Minimized toxics, greenhouse gas emissions and waste
  - Affordable and sustainable energy use
  - Aesthetically pleasing
- Adequate levels of economic, social development
  - Living wage, safe and healthy job opportunities for all, and a thriving economy
  - Support for healthy development of children and adolescents
  - Opportunities for high quality and accessible education
- Health and social equity
- Social relationships that are supportive and respectful
  - Robust social and civic engagement
  - Socially cohesive and supportive relationships, families, homes and neighborhoods
  - Safe communities, free of crime and violence

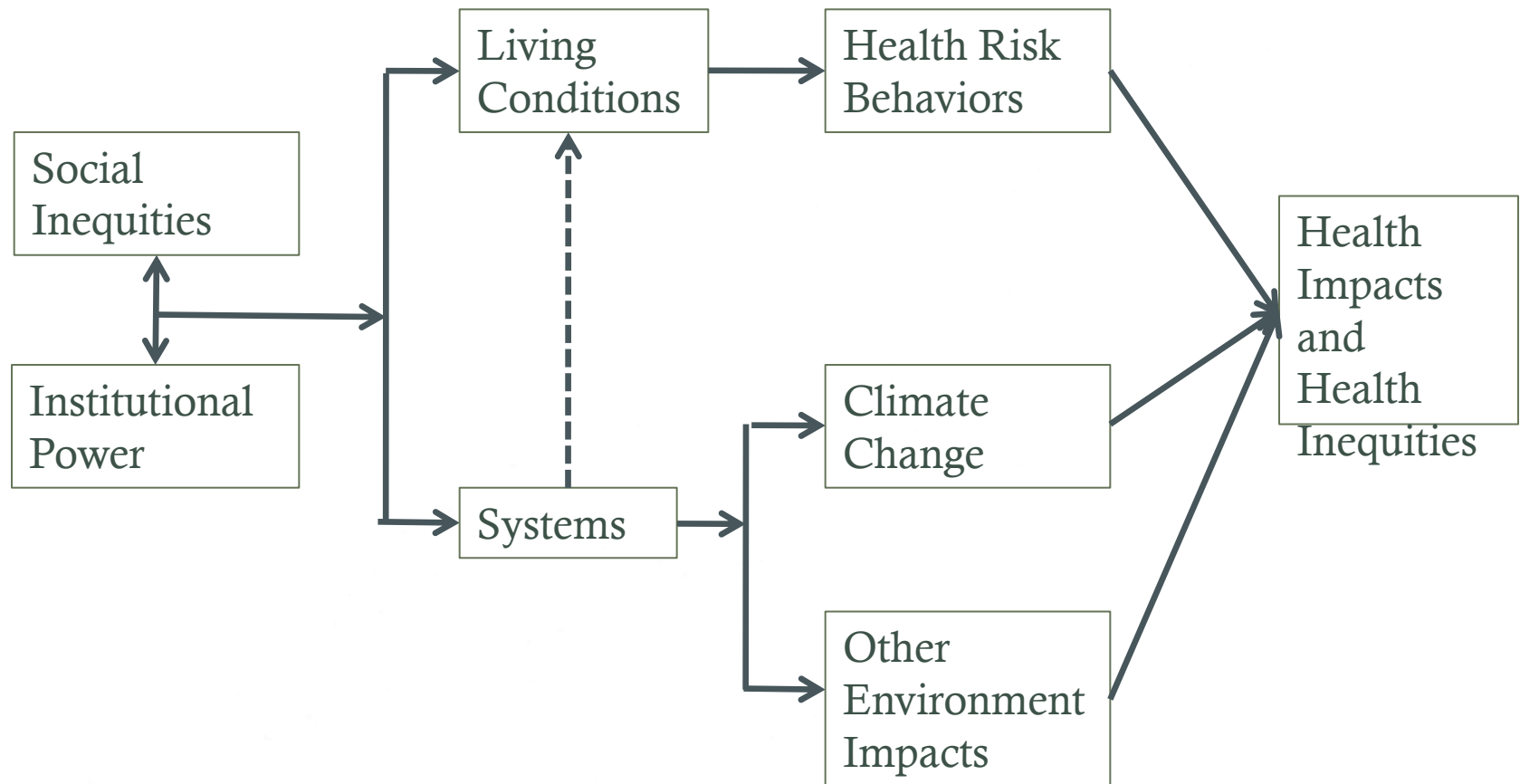
Key elements: Health, Equity, & Sustainability

# Sustainability

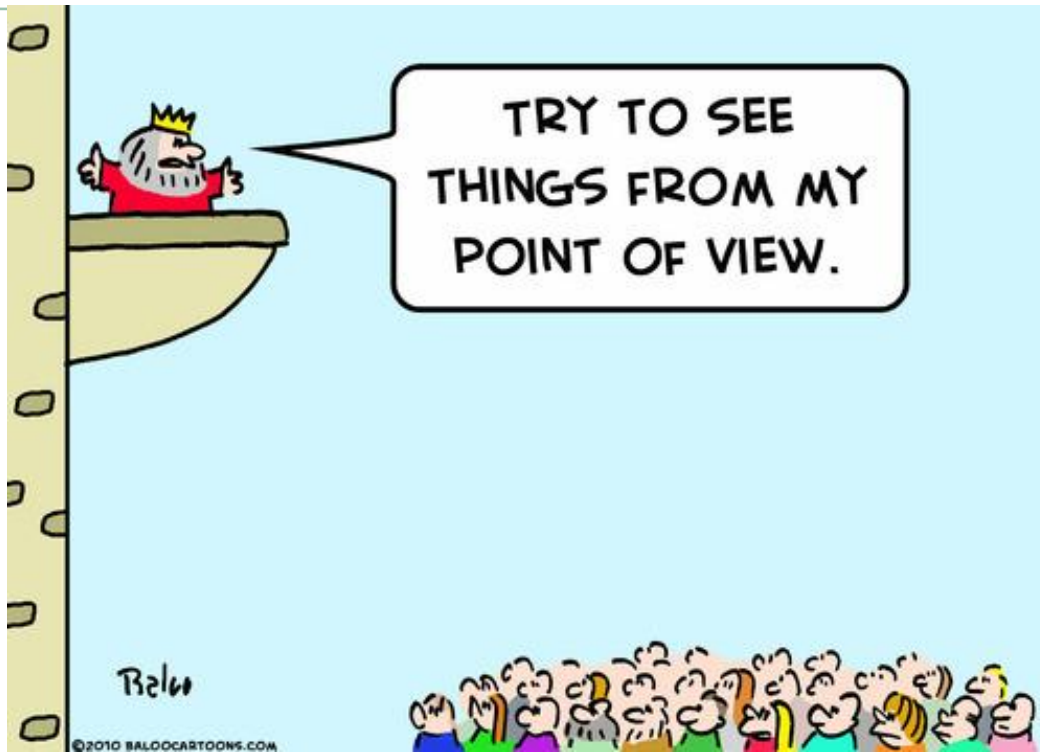
- “...the ability to meet the needs of the present without compromising the needs of the future”  
(United Nations World Commission on Environment and Development, 1987)
- Human biology has a fundamental need for food, water, clean air, shelter and relative climatic constancy .”  
(Millennium Ecosystem Assessment)
- “...environmental sustainability must itself be a key health goal, particularly because all forms of ecosystem collapse will have grave impacts on health equity, with greater impacts on the most vulnerable communities”  
(Poland et al., 2011)

Key elements:

# Health, Equity, & Sustainability



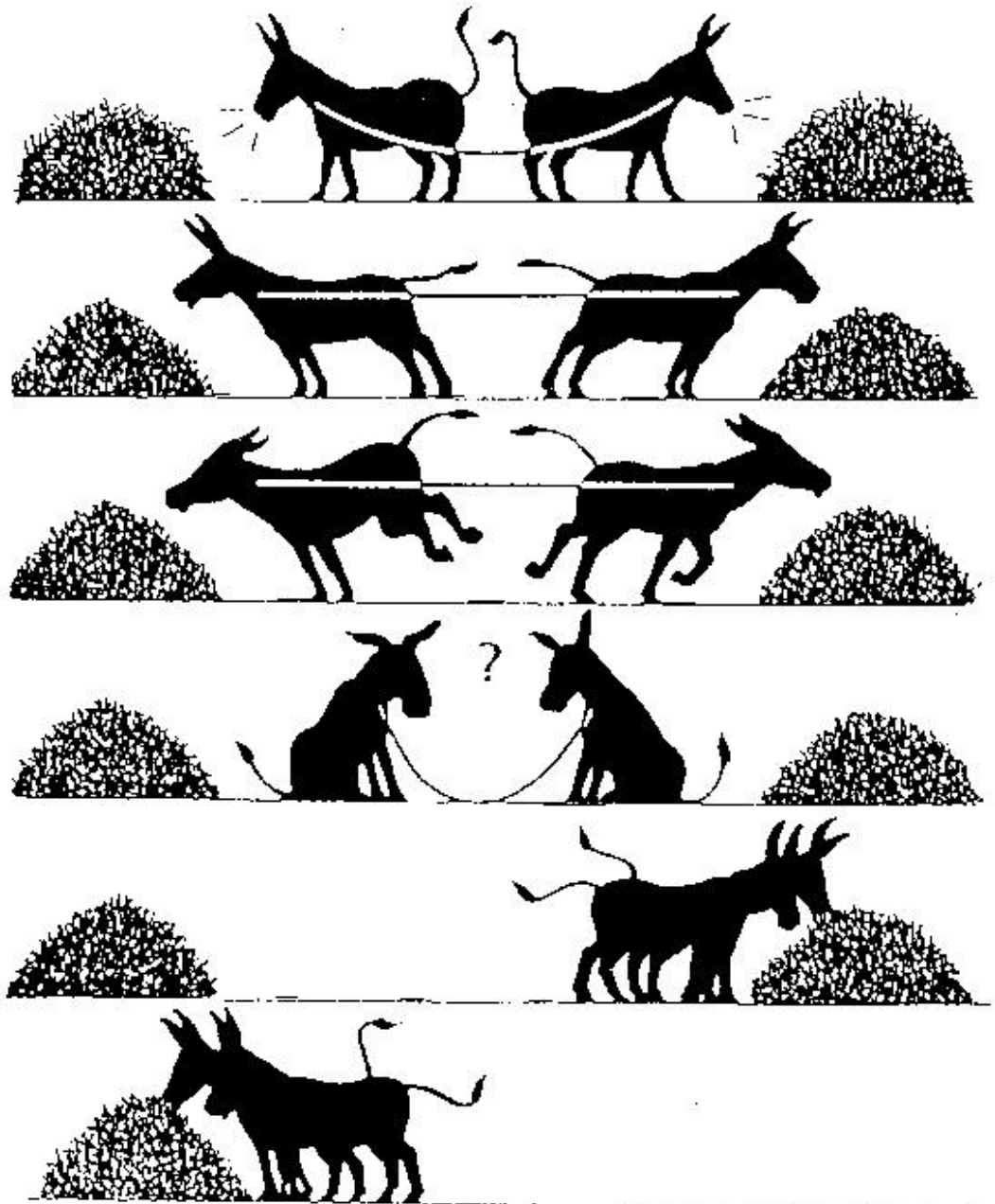




Key elements: Collaboration



## Key elements: Co-benefits

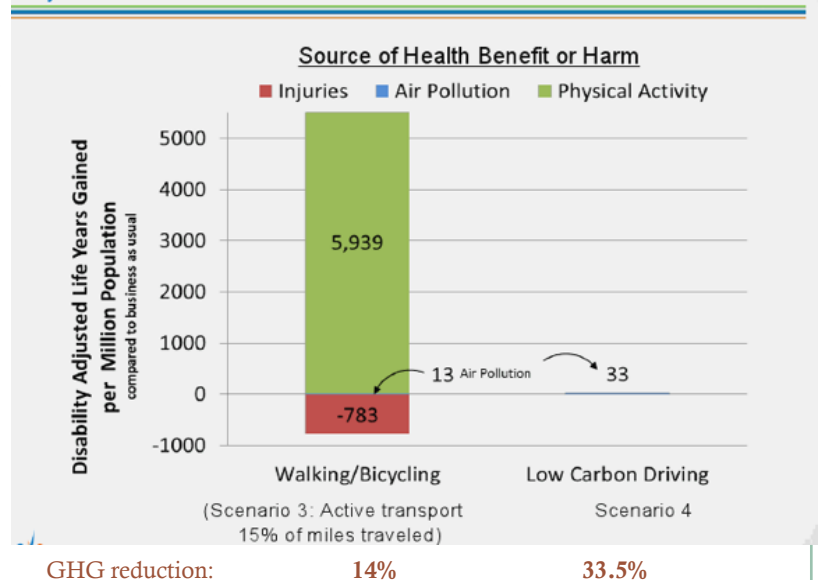


Key elements: Co-benefits

# Active Transportation, Health, & GHG

- Shift in active transport from <5 to 22 minutes/day (2% to 15% mode share) in Bay Area:
  - >14% reduction in GHG emissions
- 14% reduction heart disease, stroke, diabetes
- 6-7% reduction depression, dementia
- 5% reduction breast and colon cancer
- Added 9.5 months life expectancy
- 19% increase bike/ped injuries
- \$1.4 to \$22 billion annual Bay Area health cost savings

Annual Health Benefits of Active Transport and Low Carbon Driving in the Bay Area: Predictions from the ITHIM Model





Key elements: Co-benefits



Key elements: Institutionalization

# Spread of Health in All Policies

- EU, S. Australia, Finland, Thailand, Quebec
- U.S.
  - National Prevention Council
  - California Health in All Policies Task Force
  - California: Richmond, Sonoma, Los Angeles, Monterey
  - Baltimore, Chicago, King County
  - Massachusetts, Minnesota, Texas

# Back to the Future

- Alma Ata Declaration, 1978
- Ottawa Charter for Health Promotion, 1986
- Rio Political Declaration on SDOH, 2011



Rudolph 9/13





Key elements: Structural and Procedural Change

# Institutionalization

- Structures, processes, resources to enable timely analysis of health consequences
  - Where should HiAP be placed within government?
  - How should it be funded?
  - When is it appropriate to conduct a health analysis? Who will do it? How?
  - How will government bid capacity for HiAP?

# What will it take?

- Institutionalization
  - Resources, organizational structures, legal mandates
- Substantive community and stakeholder engagement
- Societal and government prioritization of health, equity, and sustainability
- Leadership and political will
- Robust democracy & social movements



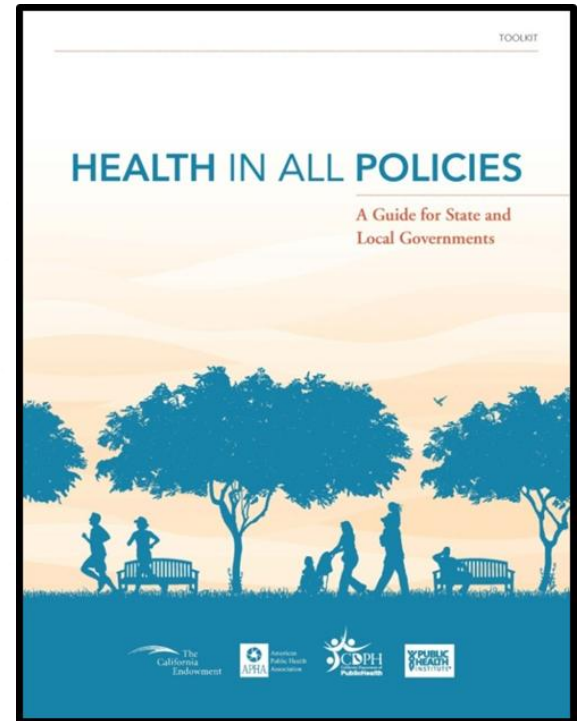
PHOTO SOURCE: LIBRARY OF CONGRESS





# Thank you.

Linda Rudolph, MD, MPH  
Public Health Institute  
[linda.rudolph@phi.org](mailto:linda.rudolph@phi.org)



**climatehealthconnect**  
The Center for Public Health & Climate Change

