



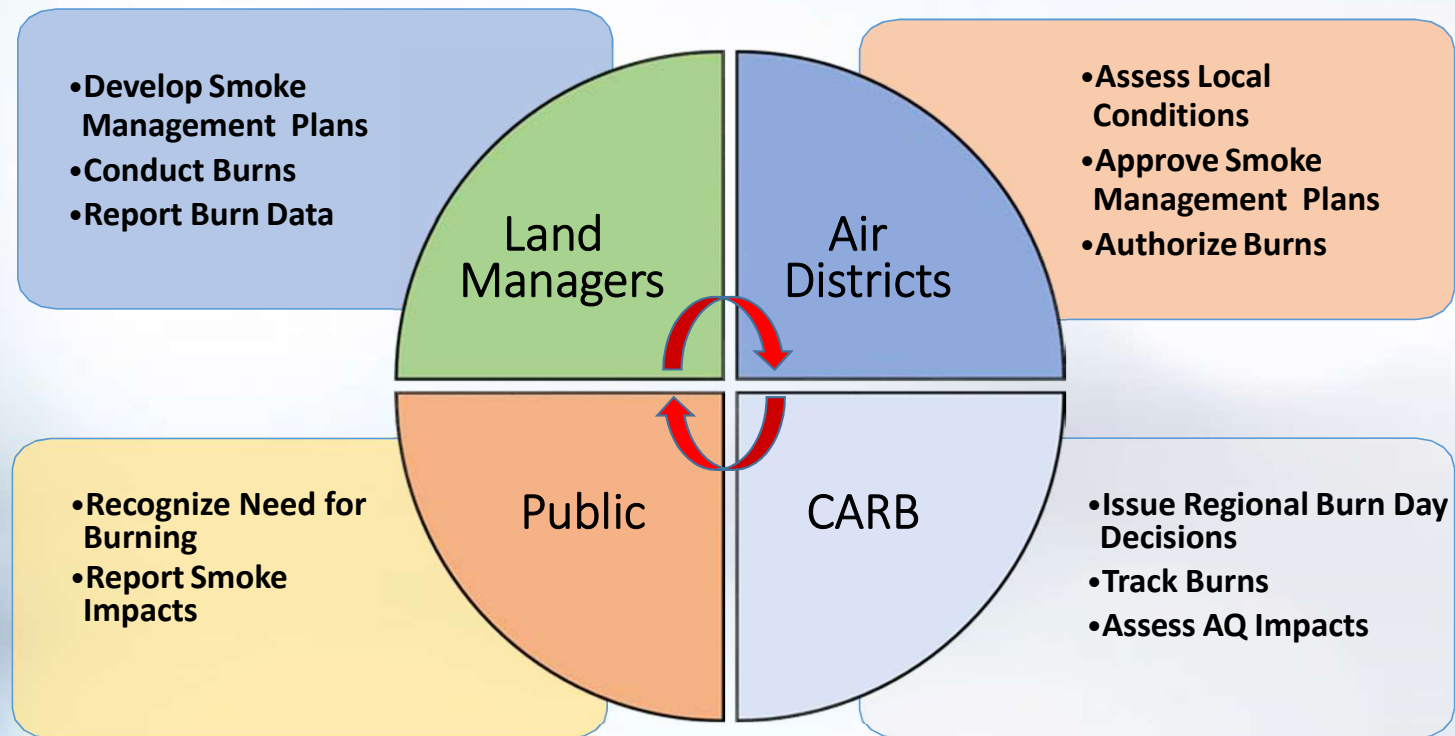
Reducing Wildfire Risk Through Prescribed Burning

Michael Benjamin, Chief
Air Quality Planning and Science Division
California Air Resources Board

Wildland Fires: Towards Improved Understanding and Forecasting of Air
Quality Impacts – A Workshop

September 24, 2020

California Partners Engaged in Prescribed Fire

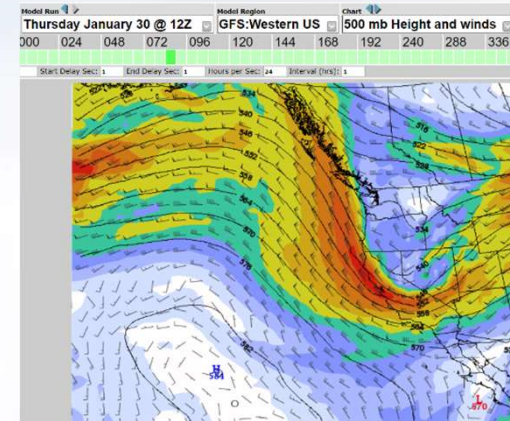


CARB's Role in Prescribed Burning

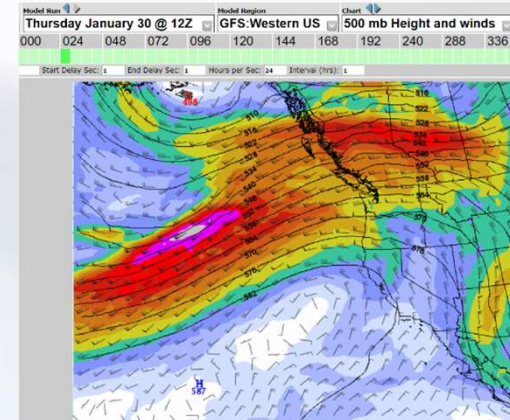
- Daily forecasting for prescribed burning (burn/no burn)
- Designed to protect public health and air quality
- Need to balance the need for prescribed burning with public health
 - e.g., is some smoke from prescribed burn activities preferable to catastrophic wildfire events?



OK to burn

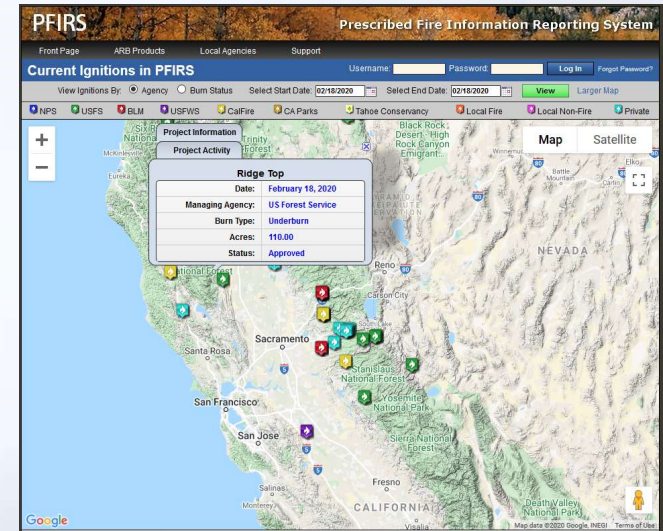


NOT OK to burn



CARB's Prescribed Fire Tools

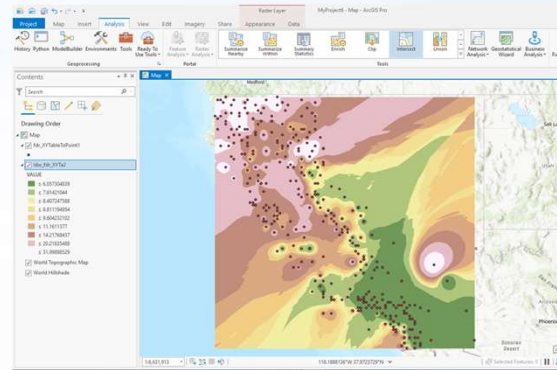
- [Statewide Smoke Management Guidelines](#) defines roles and responsibilities
- [Prescribed Fire Incident Reporting System \(PFIRS\)](#)
- Database of individual prescribed burns
- On-line burn permitting and approval system
- PFIRS helps tracks progress in meeting prescribed fire goals
- Essential building block of new CARB prescribed fire smoke app (Smoke Spotter)



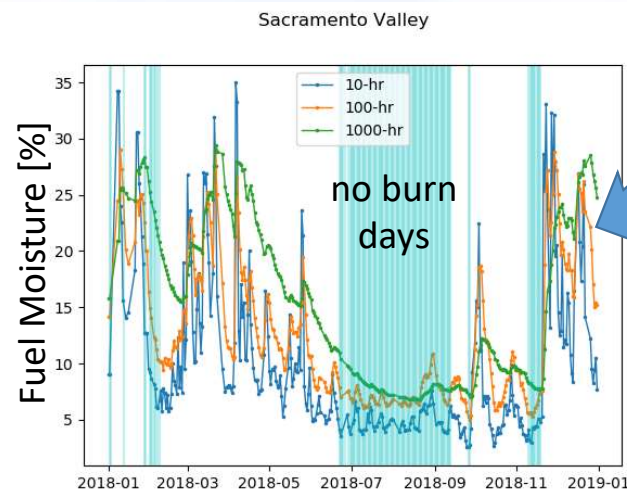
<https://phys.org/news/2014-02-strategy-homes.html>

Potential Bottlenecks to Prescribed Burning

- Are there a sufficient number of “OK to burn” days to fully utilize prescribed burns?
- With wildfire season growing in length, there may be fewer opportunities to conduct prescribed burns.
- Are conditions on the ground conducive to burning?
- Are on the ground personnel sufficient to take advantage when conditions are conducive to burning?



Utilize USFS-WFAS fuel moisture data to estimate fuel moisture conditions



Evaluate fuel moisture estimates on “OK to burn” days

- Not all days will be conducive to burning
- How many days are left to burn?

Summary

- More prescribed burning needed to mitigate future wildfire risk
- Need close collaboration between air quality regulators, land managers, and the public
- Important to socialize public on the need for smoke
- Balance prescribed burning with minimizing public exposure to smoke
- Smoke management guidelines clarify the approval process
- Online systems can streamline the permitting process and allow tracking of progress
- Identify potential roadblocks to increased prescribed burning, including permitting process, sufficient burn days, and available resources