

Data Overview - Birmingham

Stuart Andreason

Federal Reserve Bank of Atlanta

Josh Carpenter

City of Birmingham

The City of Birmingham started with greater economic stresses than its suburbs

Poverty Rate

- Birmingham Metro— 14%
- City of Birmingham – 25.2%

Median wages (population 16 and over)

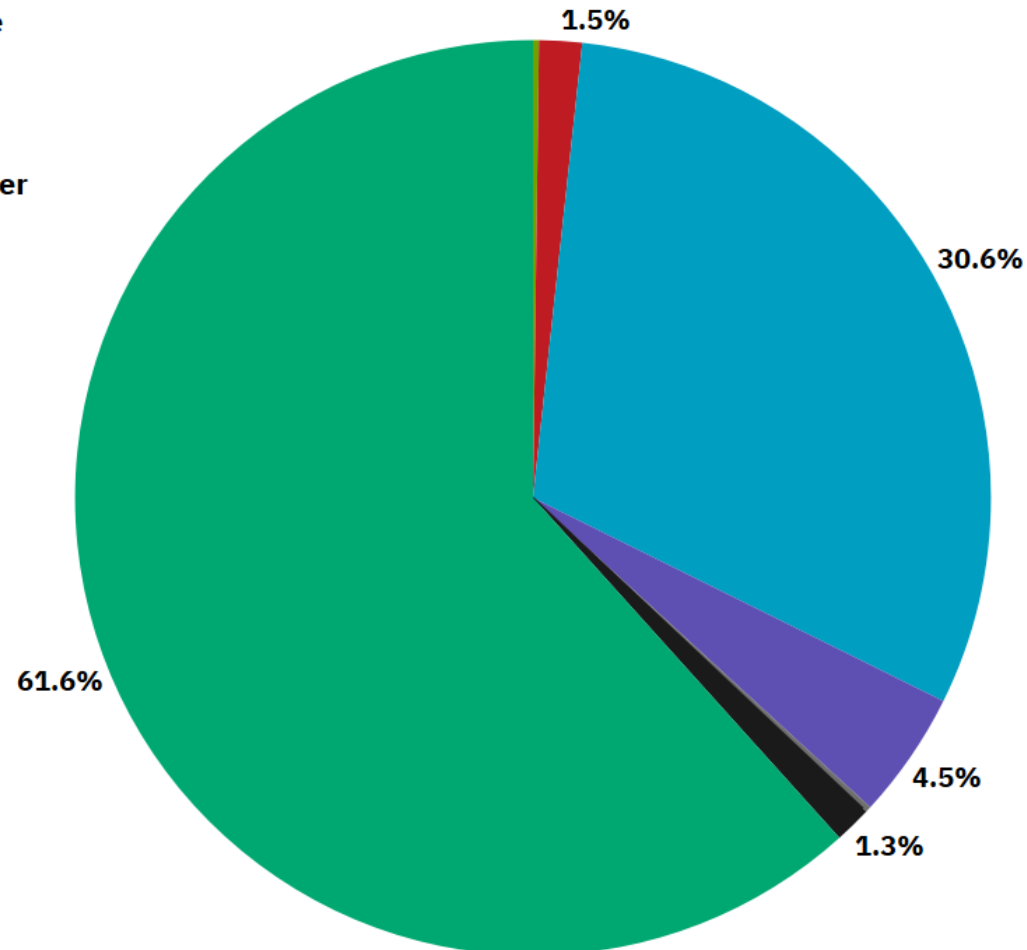
- Birmingham Metro - \$36,427
- City of Birmingham - \$30,014

Source: U.S. Census Bureau American Community Survey
2019 1-Year Estimates

Basic Demographics and Economic Stresses

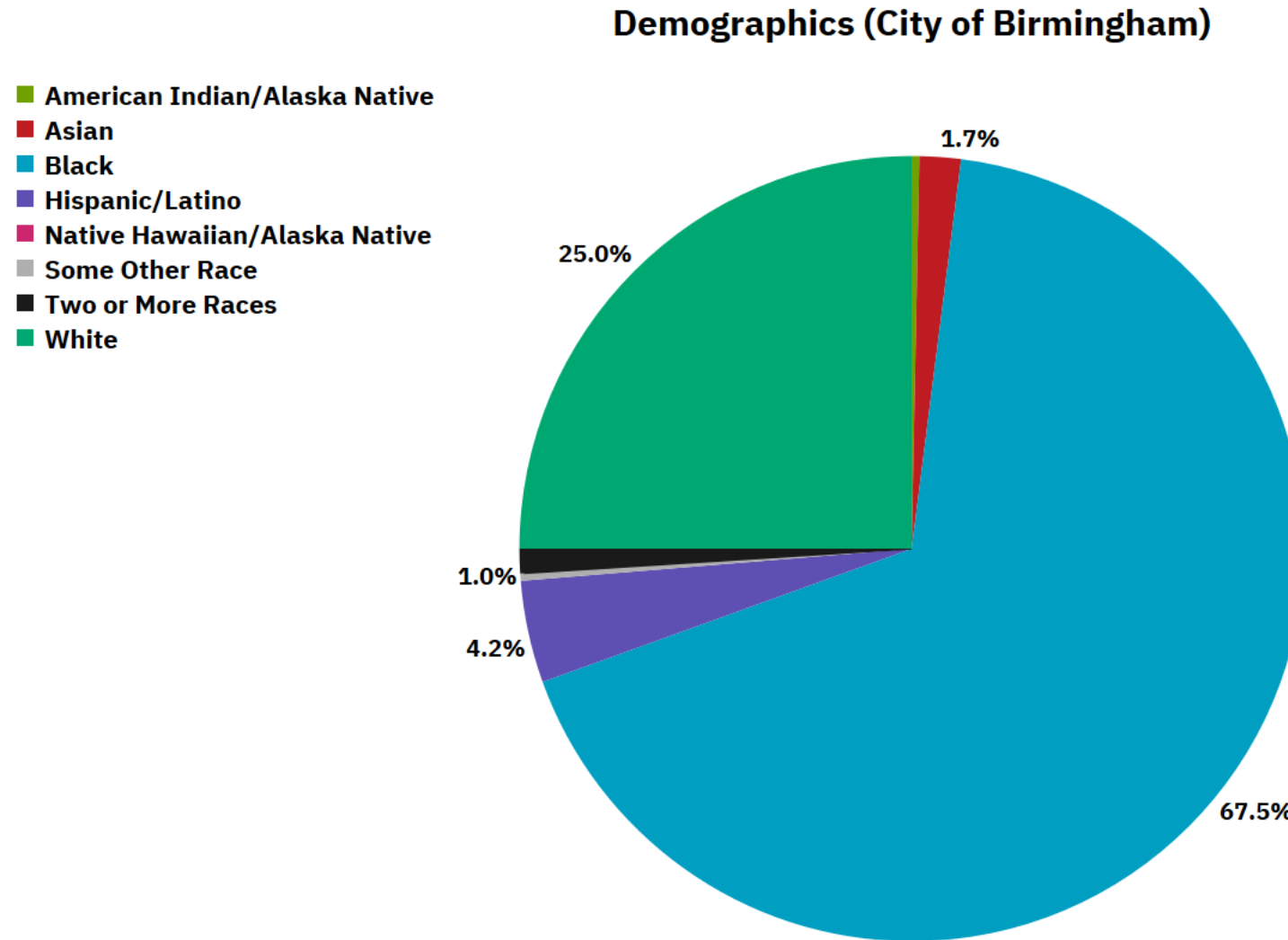
Demographics (Birmingham-Hoover Metro)

- American Indian/Alaska Native
- Asian
- Black
- Hispanic/Latino
- Native Hawaiian/Pacific Islander
- Some Other Race
- Two or More Races
- White



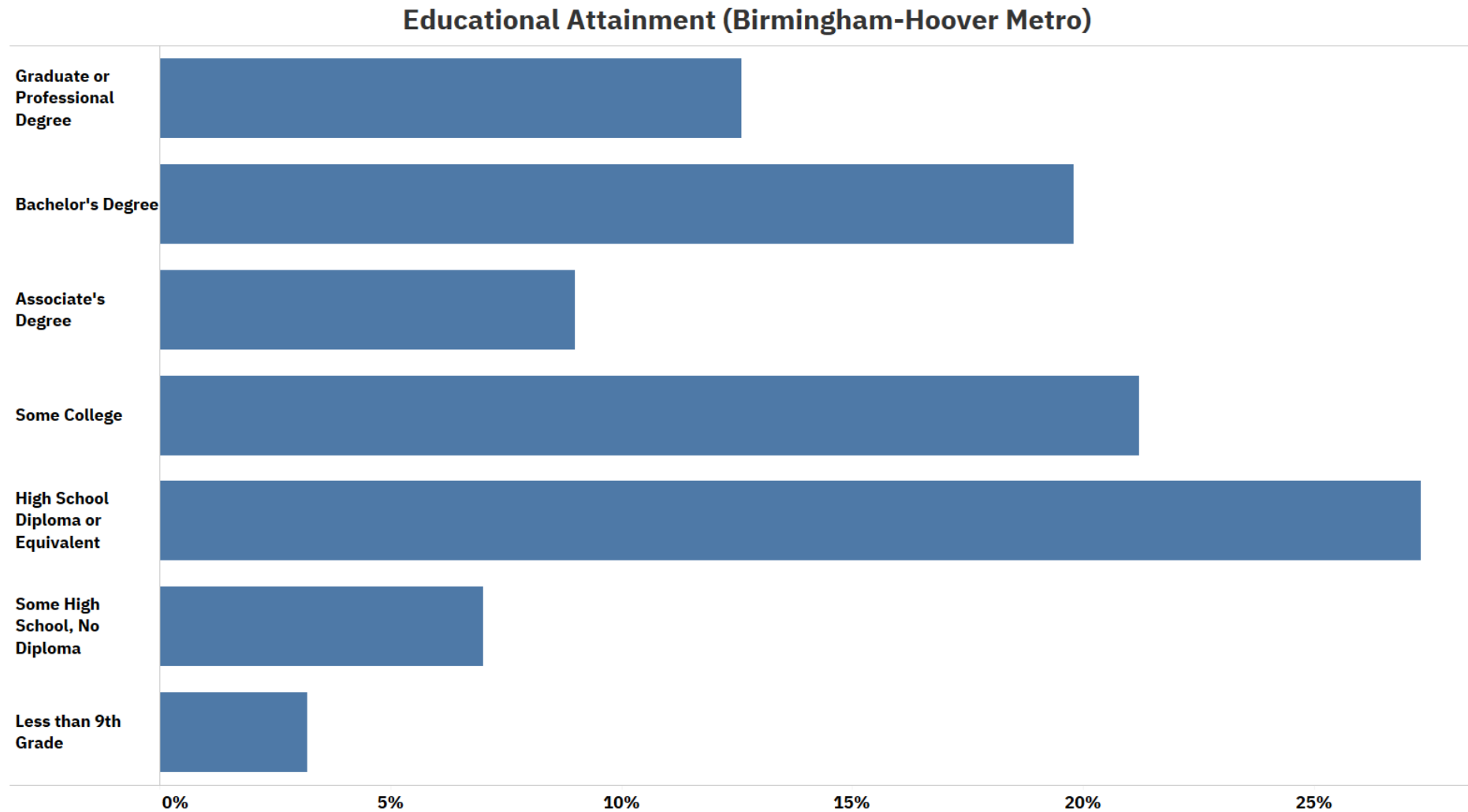
Source: U.S. Census Bureau American Community Survey 2019
1-Year Estimates

Basic Demographics and Economic Stresses



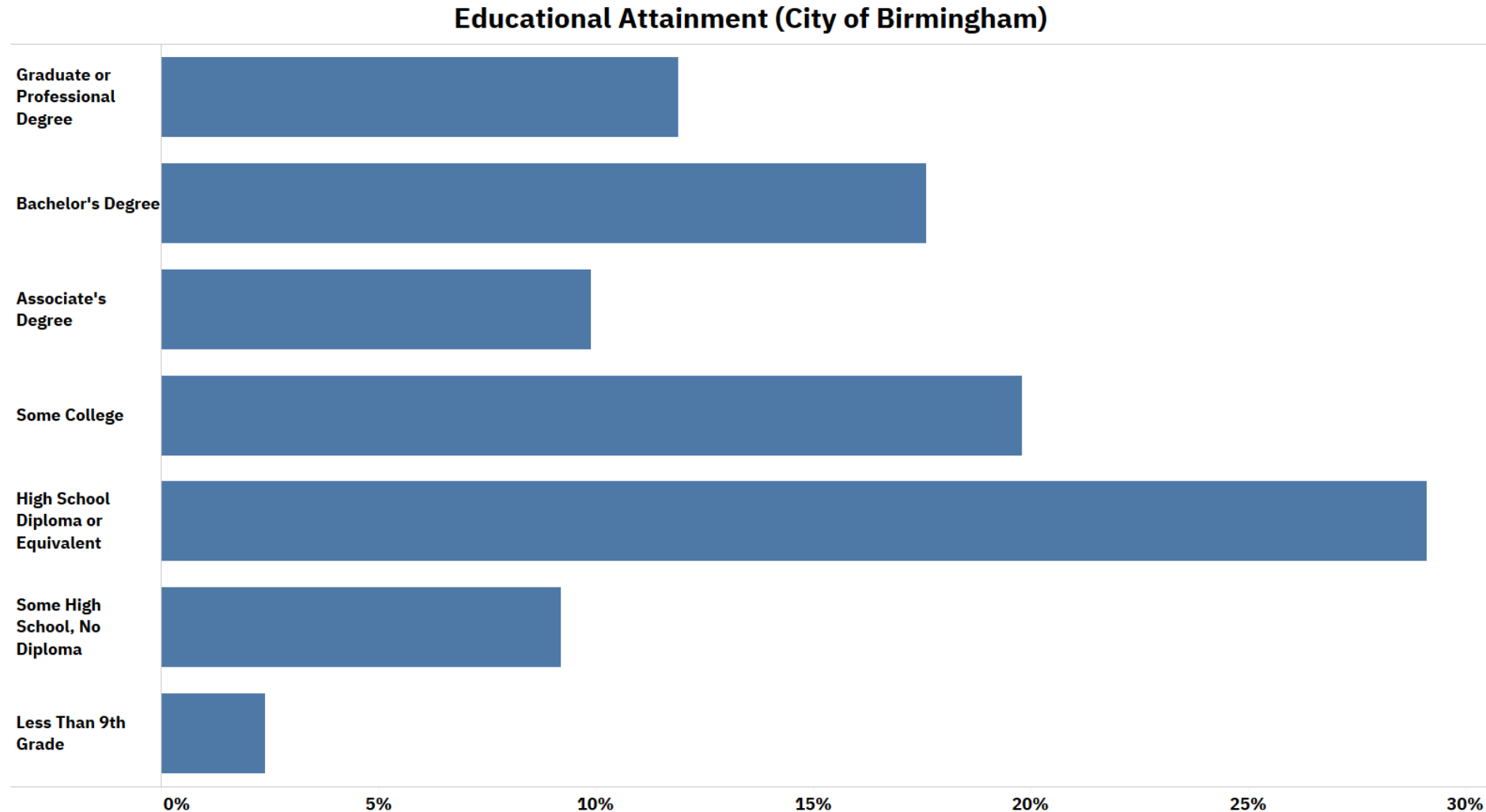
Source: U.S. Census Bureau American Community Survey 2019
1-Year Estimates

Birmingham Metro Educational Attainment



Source: U.S. Census Bureau American Community Survey 2019
1-Year Estimates

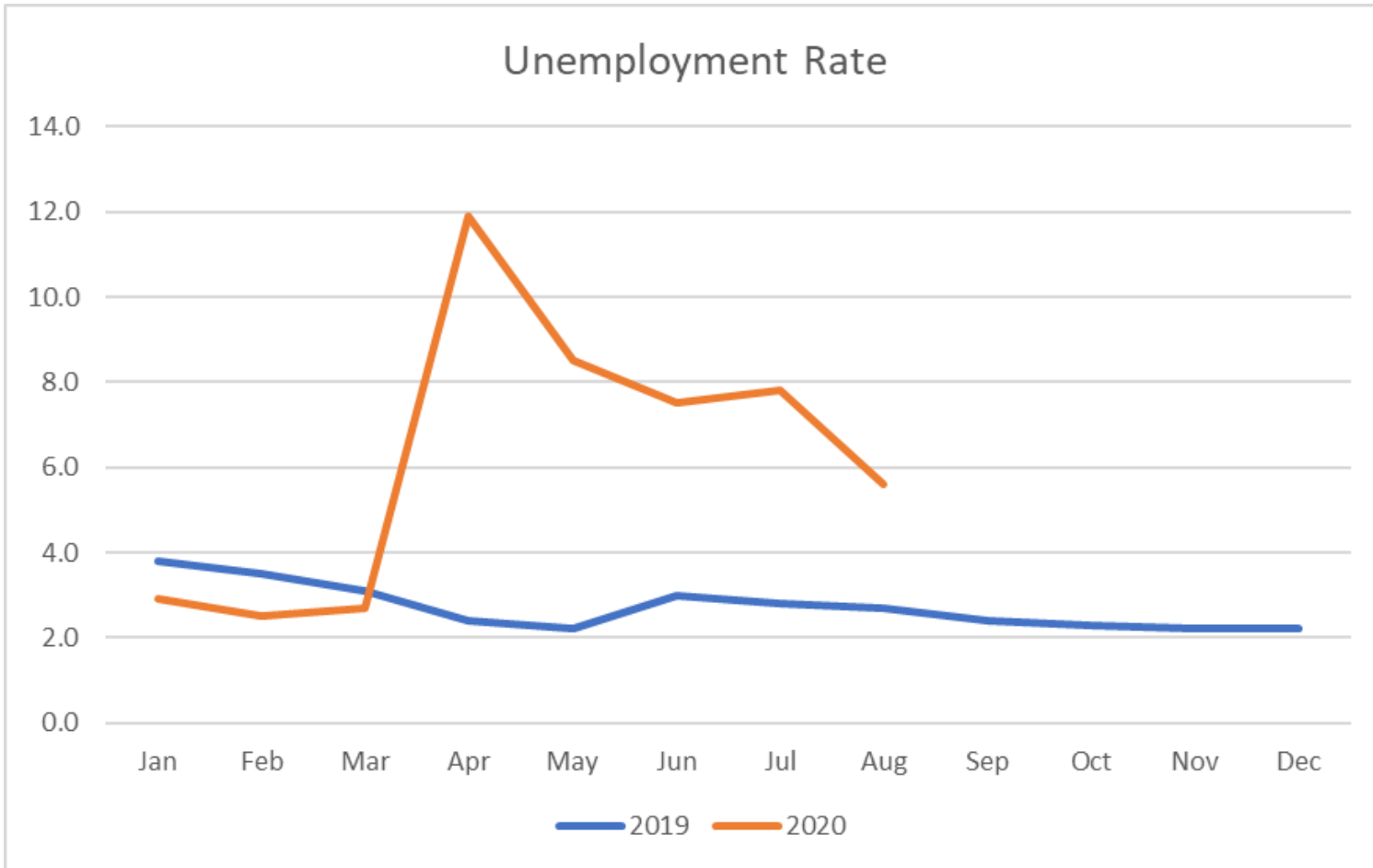
City of Birmingham Educational Attainment



Source: U.S. Census Bureau American Community Survey 2019
1-Year Estimates

Unemployment remains significantly higher post-COVID 19

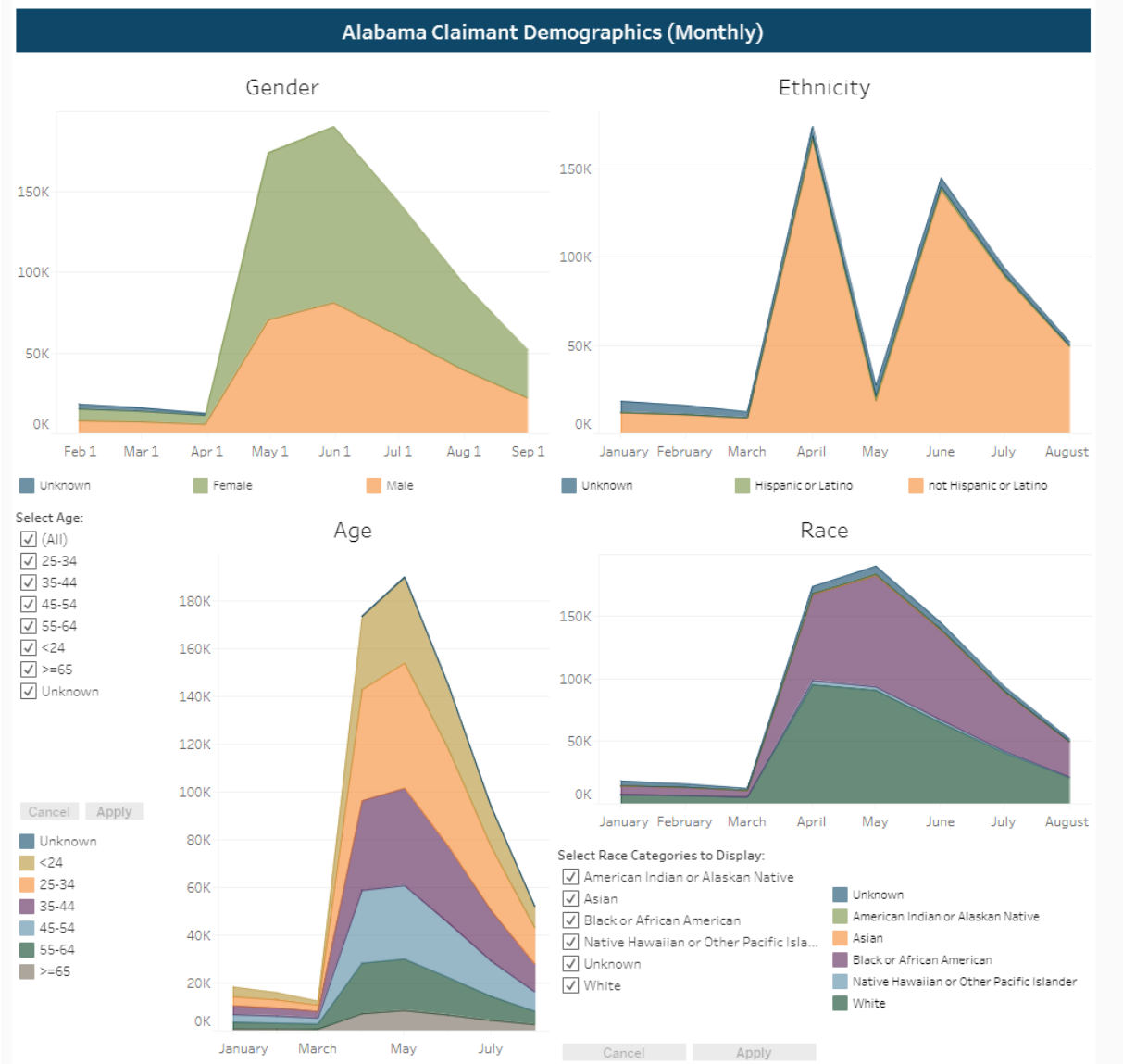
Metro Birmingham Unemployment Rate



Source: Bureau of Labor Statistics Local Area Unemployment Statistics

- Metro unemployment was below 4% and among the lowest in the country for much of 2019
- The City of Birmingham was considerably higher in 2019 - 7.3% (2019 ACS 1-Year Estimate) – there is not yet a 2020 parallel city estimate for post-COVID 19

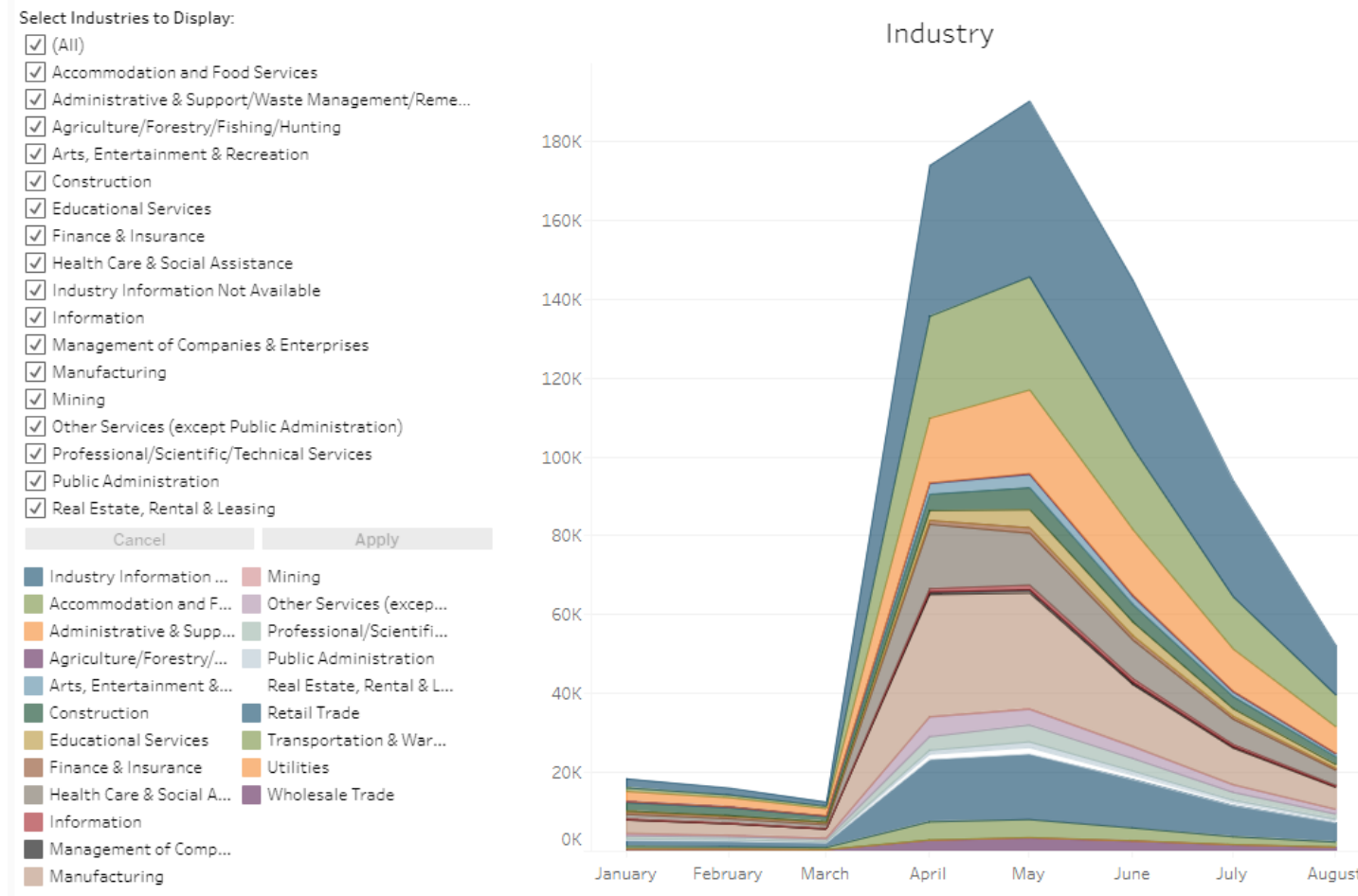
Unemployment Claims – Alabama



- Women have fared worse –
 - 57% of claimants were women compared to 47% of the workforce
- 46% of claimants were under 35 years old compared to 35.8% of the workforce
- 53.5% of claimants were Black or African American compared to 24.9% of the workforce
- During the week of September 19, more workers (36,793) were on the new Pandemic Unemployment Assistance Program than the traditional (34,997)

*Percentages are from September 2020 Claims

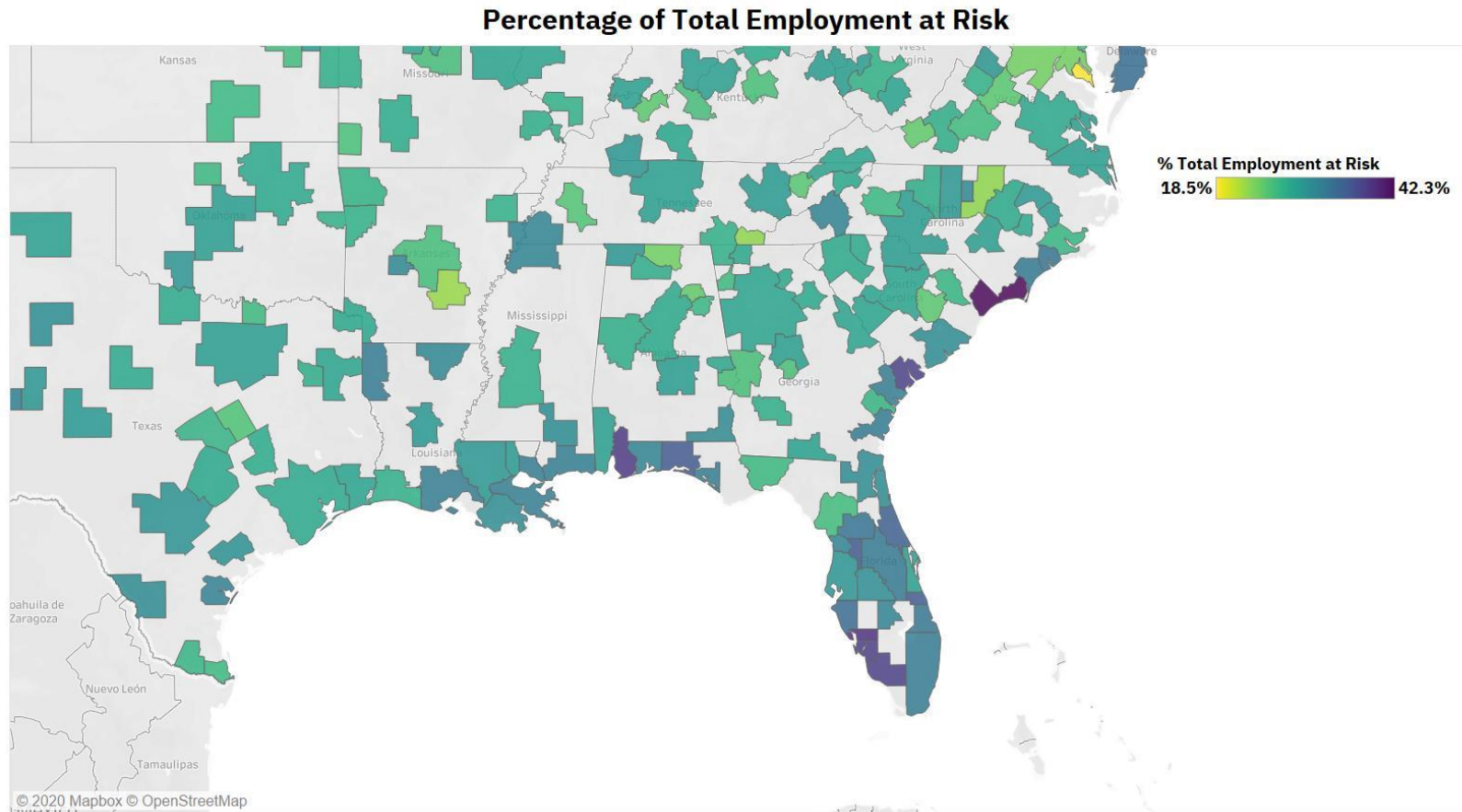
Alabama Unemployment Claims by Industry



- 15.4% - Accommodation and Food Services
- 13% - Administrative Support and Waste Management
- 9.5% - Retail Trade
- 10.5% - Manufacturing
- 7.3% - Healthcare
- 3.9% - Construction

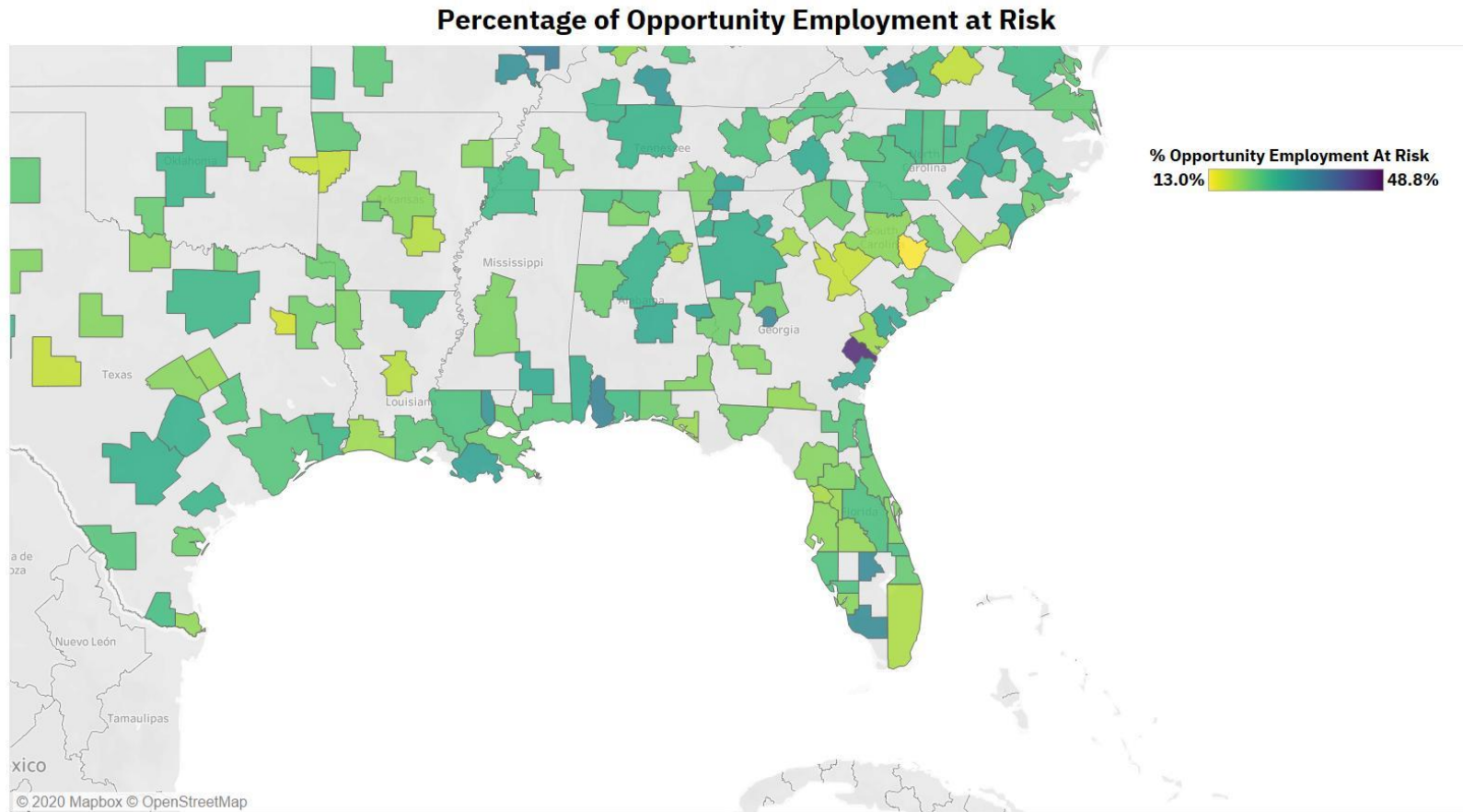
*Percentages are from September 2020 Claims

Employment at risk is lower in Birmingham than other southern metros with tourism based economies



Source:
Atlanta Fed Center for
Workforce and Economic
Opportunity Analysis of
McKinsey Global Institute
Automation Risk Index and
COVID Exposure Index
using BLS Occupational
Employment Statistics Data
in the [Opportunity
Occupations Monitor](#)

High paying, middle skill jobs are at greater risk of permanent loss in Birmingham metro than other parts of the south



Source:

Atlanta Fed Center for Workforce and Economic Opportunity Analysis of McKinsey Global Institute Automation Risk Index and COVID Exposure Index using BLS Occupational Employment Statistics Data in the [Opportunity Occupations Monitor](#)

Note: Opportunity occupations/employment are jobs that pay above regional median wage but do not require a bachelors degree, see more at the [Atlanta Fed CWEO Opportunity Occupations Monitor](#)

Birmingham Metro

Top Ten Jobs at Risk

	Total Employment	Opportunity Employment
Cashiers	15,450	0
Retail Salespersons	15,380	0
Secretaries And Administrative Assistants, Except Legal, Medical, And Executive	13,030	10,570
Laborers And Freight, Stock, And Material Movers, Hand	9,260	0
Waiters And Waitresses	9,000	0
Office Clerks, General	7,130	0
First-Line Supervisors Of Retail Sales Workers	5,850	4,401
Bookkeeping, Accounting, And Auditing Clerks	5,630	3,631
First-Line Supervisors Of Food Preparation And Serving Workers	4,890	0
Cooks, Restaurant	3,810	0

Top Ten Opportunity Jobs at Risk

	Opportunity Employment	Total Employment
Secretaries And Administrative Assistants, Except Legal, Medical, And Executive	10,570	13,030
First-Line Supervisors Of Retail Sales Workers	4,401	5,850
Bookkeeping, Accounting, And Auditing Clerks	3,631	5,630
Maintenance And Repair Workers, General	3,380	3,380
Carpenters	2,020	2,020
Operating Engineers And Other Construction Equipment Operators	1,960	1,960
Billing And Posting Clerks	1,214	1,510
Insurance Claims And Policy Processing Clerks	972	1,580
Loan Interviewers And Clerks	961	1,120
Dispatchers, Except Police, Fire, And Ambulance	923	990

Source:
 Atlanta Fed Center for
 Workforce and
 Economic
 Opportunity Analysis
 of McKinsey Global
 Institute Automation
 Risk Index and COVID
 Exposure Index using
 BLS Occupational
 Employment Statistics
 Data in the
[Opportunity
 Occupations Monitor](#)

Birmingham Metro's industry mix affects the total number of potential jobs affected

CBO Estimates

- 49.8% of Birmingham's industry employment demand expected to be impacted compared with 55.6% statewide

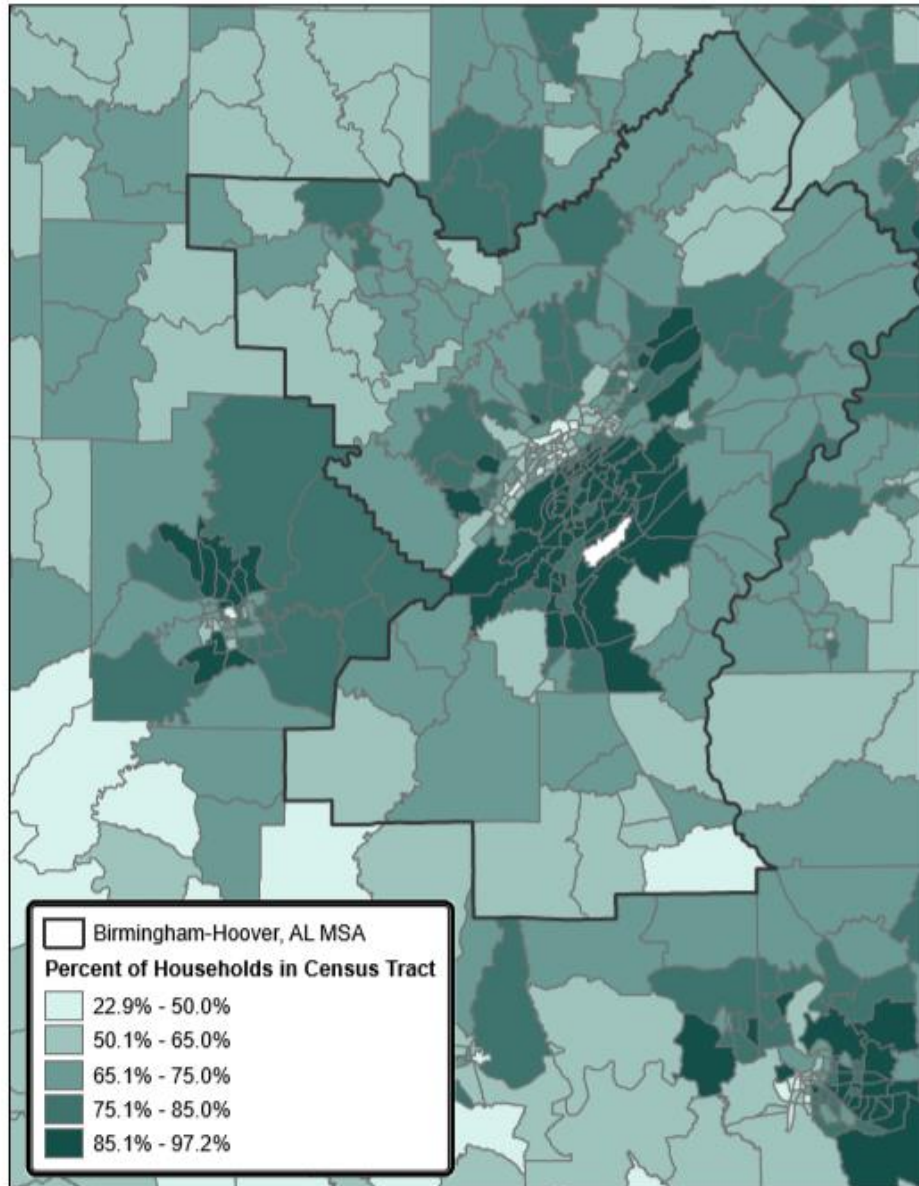
Work from home estimates (pre-pandemic)

- 28.6% of Birmingham's workers predicted to be able to work from home compared with 28.1% statewide

Source: [*The Digital Divide and the Pandemic: Working from Home and Broadband and Internet Access*](#)

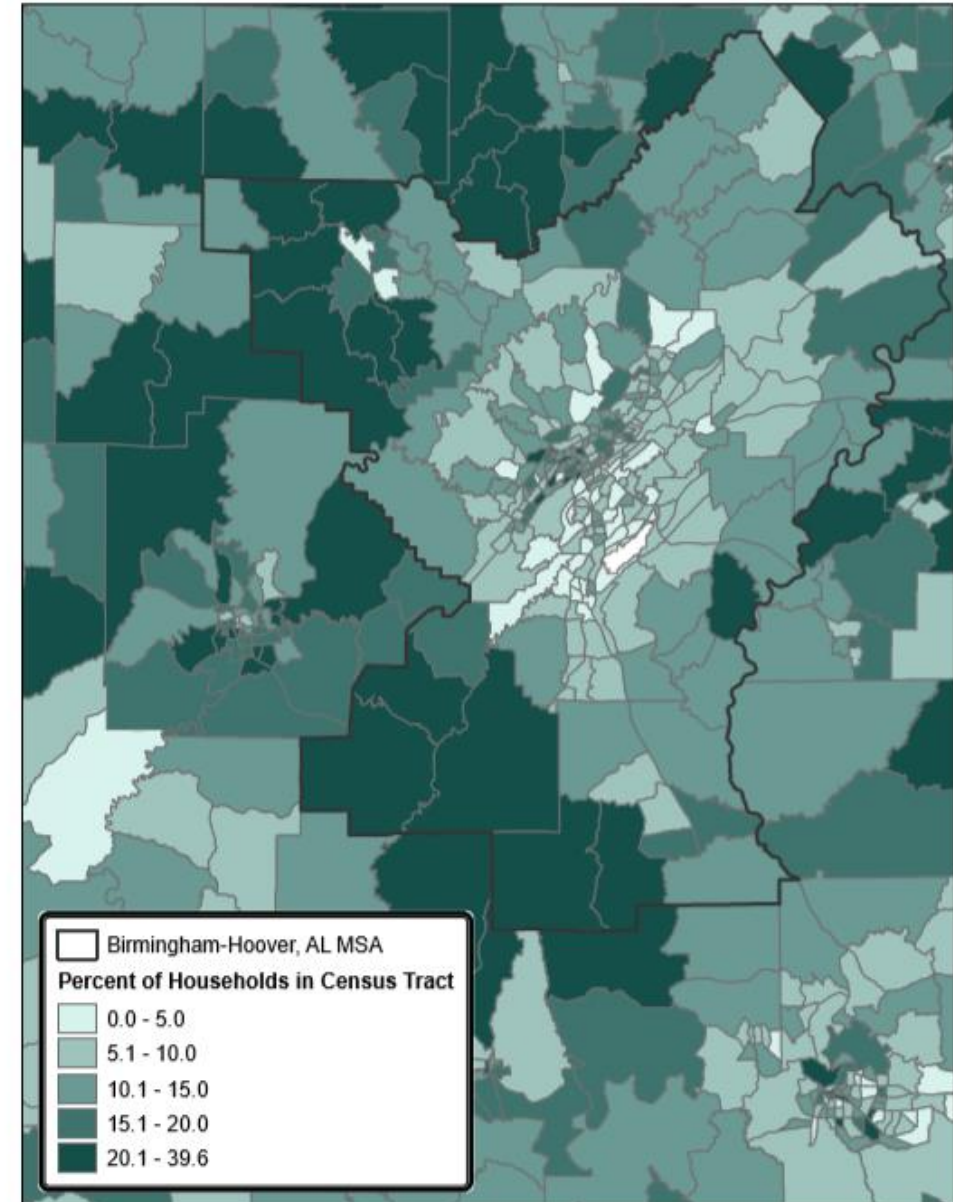
Sources: [Congressional Budget Office 2006, A Potential Influenza Pandemic: Possible Macroeconomic and Policy Issues](#); U.S. Bureau of Labor Statistics' Quarterly Census of Employment and Wages, 2019 Q1–Q3 data; and U.S. Bureau of Labor Statistics' American Time Use Survey: 2018 Results.

Percent of Households with Broadband Internet Service
in the Birmingham-Hoover Metropolitan Area
by Census Tract, 2014-2018



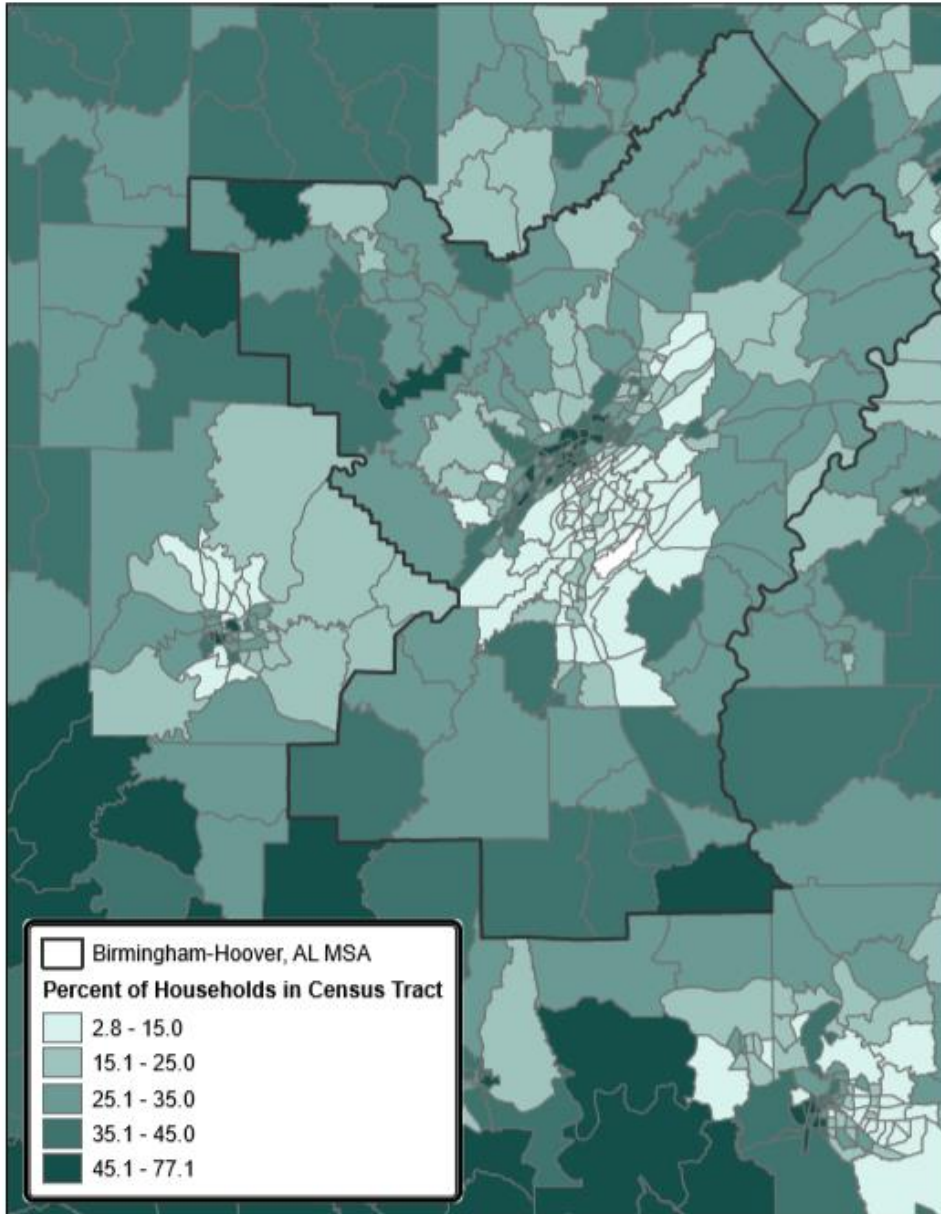
Source: Institute for Policy & Social Research, The University of Kansas;
data from U.S. Census Bureau, 2014-2018 American Community Survey.

Percent of Households with Broadband - Cellular Only Internet Service
in the Birmingham-Hoover Metropolitan Area
by Census Tract, 2014-2018



Source: Institute for Policy & Social Research, The University of Kansas;
data from U.S. Census Bureau, 2014-2018 American Community Survey.

Percent of Households with Dial-up or No Internet Service
in the Birmingham-Hoover Metropolitan Area
by Census Tract, 2014-2018



Internet access and digital divides are evident as both urban and rural many houses that could have internet likely cannot afford service or do not purchase service

Birmingham-Hoover Metro Internet Access Overview

Internet Access

- 84.6% of all households have a high-speed internet subscription
- 16.9% of all households have internet access through cellular data plans only
- 15% of all households have no internet subscription
- 40.1% of households earning less than \$20,000 have no internet subscription

Computing Devices

- 72.8% of all households have a desktop or laptop computer
- 12.7% of all households have a smartphone with no other device
- 8.5% of all households have no computing device

City of Birmingham Internet Access Overview

Internet Access

- 76.9% of all households have an internet subscription
- 63.6% of all households have a high-speed connection
- 20.6% of all households have internet access through cellular data plans only
- 23.1% of all households have no internet subscription
- 40.6% of households earning less than \$20,000 have no internet subscription

Computing Devices

- 60.6% of all households have a desktop or laptop computer
- 19.1% of all households have a smartphone with no other device
- 13.8% of all households have no computing device