

# **Building the COVID-19 Testing Infrastructure for Massachusetts Colleges & Universities: A Crisis Driven Collaboration**

October 15, 2020

Presentation by Paula A. Johnson, president of Wellesley College,  
to the NASEM Government-University-Industry Research Roundtable (GUIRR)



# Meet the Massachusetts Higher Education Working Group

**Laurie Leshin**, president, Worcester Polytechnic Institute,  
member of the Governor's Reopening Advisory Board

**Robert Brown**, president, Boston University

**Nicholas Covino**, president, William James College

**Javier Cevallos**, president, Framingham State University

**Mary-Beth Cooper**, president, Springfield College

**Helen Drinan**, president, Simmons University

**Patricia Gentile**, president, North Shore Community College

**Deborah Jackson**, president, Cambridge College

**Paula Johnson**, president, Wellesley College

**Richard Lapidus**, president, Fitchburg State University

**Marty Meehan**, president, University of Massachusetts

**Anthony Monaco**, president, Tufts University

**Paula Rooney**, president, Dean College

**Yves Salomon-Fernandez**, president, Greenfield Community  
College

## Staff:

**David Bunis**, senior vice president and general counsel, Worcester  
Polytechnic Institute

**Linette Decarie**, assistant VP, AS&IR, Boston University

**Richard Doherty**, president, AICUM

**Rob McCarron**, senior vice president and general counsel, AICUM

**Ann Reale**, undersecretary & COO, Executive Office of Education

**Jessica Sharkness**, director, Institutional Research, Tufts University



# Our phased approach to reopening

## Phase 1: Start

- Repopulate research labs, medical, dental, veterinary & allied health clinical education and services
- Repopulate limited functions necessary for students to return

## Phase 2: Cautious

- Relaunch/pilot limited student programming on campus

## Phase 3: Vigilant

- Opening: Carefully repopulate residence halls, dining halls, classrooms

## Phase 4: New Normal

- New normal operations on college and university campuses






# Guiding principles for safely reopening colleges and universities\_

- Protect the health and safety of our students (including mental health), faculty, staff, and people in surrounding communities
- Enable students to make meaningful progress towards their educational goals
- Contribute to research and innovation
- Minimize adverse economic impact on families, employees, and the Massachusetts economy



# Higher education is critically important to the Massachusetts economy

 <b>136,000</b> Total employees including <b>58,000</b> Faculty and research + <b>77,000</b> Staff	<b>\$24.5 Billion</b> Annual institutional expenditures	
	<b>500,000</b> Students enrolled at 106 institutions	<b>\$10B</b> Salaries paid to higher ed employees 
	 <b>\$4.1 Billion</b> Federal & sponsored Research	

# The challenge for Higher Education Working Group

- No national or state guidance on health and safety protocols
- No established standards for determining who should be tested and how often
- Huge need among local colleges and universities for accurate, timely, more affordable testing on a massive scale and no existing infrastructure in place



# MA Higher Education Testing Working Group

## Higher education Presidents

- Boston University
- Cambridge College
- Harvard University
- Tufts University
- Wellesley College (Chair)
- WPI

## Academic Medicine/Public Health

- Boston University School of Public Health
- Brigham and Women's Hospital
- Massachusetts General Hospital
- Mass General Brigham (Partners HealthCare)
- UMass Medical School

- 
- Leadership committed the time in service to the entire higher education community.
  - ALCUM provided essential support and guidance



# Higher Education Testing Working Group

## Guiding principles:

- Access to asymptomatic testing across higher education is critical to repopulation of campuses and preventing outbreaks of COVID-19
- The science and technology is rapidly evolving, so plans must be flexible
- The expectation is that large numbers of tests will be needed for the higher education community
- Contact tracing and quarantine and isolation protocols must be developed in conjunction with testing protocols
- Access to symptomatic testing is essential
- Behavioral strategies for prevention are part of the multilayered strategy that is critical to safety (masks, physical distancing, hand hygiene)





# Science Drives Protocols

- Evaluated emerging mathematical models of virus spread
- Screening protocols for COVID-19 were developed -- based on the biology of transmission, risk of exogenous exposure, and ability to limit contacts and contain disease quickly
- Modeling converged on a recommendation that testing between every two to seven days with the outer limits of 12 days under optimum conditions (None of us would have optimal conditions!)
- Populations at higher risk of infection and driving on-campus spread (residential students and individuals with high contact hours with residential students) were recommended to be tested more frequently than those at lower risk.



# Meeting the challenge: A breakthrough partnership

**The Broad Institute**, the world leader in genomics research based in Cambridge, Mass. with largest genetic sequencing capacity in the world

- Eric Lander, Stacey Daniel, and Deborah Hung saw the problem and converted from research to COVID-19 testing using PCR
- Commonwealth provided an early investment of \$15 million to Broad

Model offers:

- **Scale:** Currently 100 colleges and universities in New England and eastern New York (43 private and 14 public in Mass.)
  - Total of 3M tests to date; 70,000/per day; expanding capacity to 100,000
- **Flexibility:** Institutions decide who is eligible and how often tested
- **Speed and accuracy:** 24-hour turnaround; highly accurate PCR test



# Meeting the challenge: A breakthrough partnership

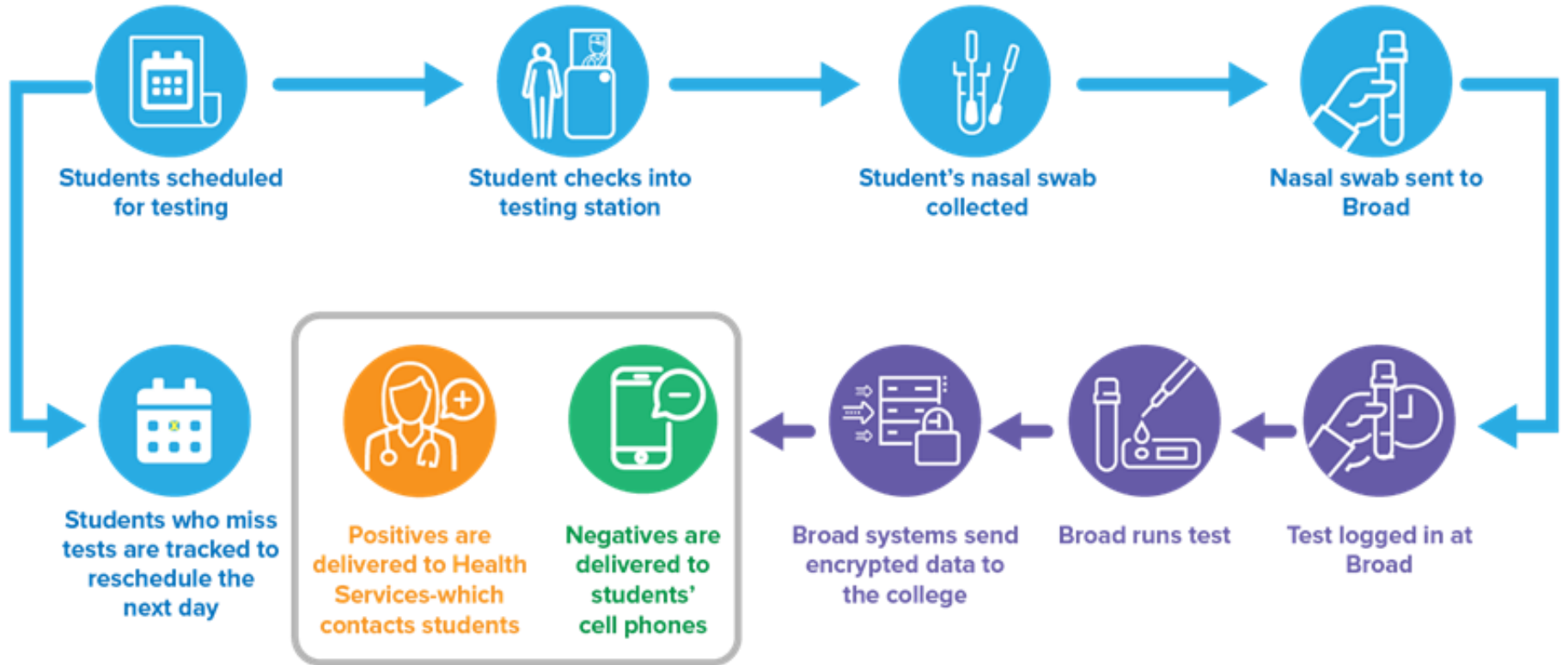
**The Broad Institute**, the world leader in genomics research based in Cambridge, Mass. with largest genetic sequencing capacity in the world

- Eric Lander, Stacey Daniel, and Deborah Hung saw the problem and converted from research to COVID-19 testing

## AT A COST OF \$25/test



# Process for testing



# Infrastructure Innovation: IT systems are essential

- **IT interfaces between the Broad and Colleges/Universities critical**
  - Collaboration with Tufts University that led the development of logistics technology (mechanics of using internal ID system to label and track testing adherence)
  - Technology through the Broad to deliver encrypted data that is stored in each school's system.
- **Smoothing testing over time**
  - Campus Key Mobile App developed by Tufts to identify preferred testing times
- **Transportation system**
  - Developed by the Broad to ensure delivery from across the state to the Broad in order to produce results within 24 hours of arrival to Broad



# Building a health and safety infrastructure for higher education

- The partnership with the Broad Institute made it possible to do the widespread testing necessary to bring students back
- Sustained collaboration and creativity among higher education and between higher ed and the scientific/medical community—from disease modeling to best practices to technology
- Continued relationship with the Commonwealth and looked to as a resource
- Optimizing for success—sharing best practices, adapting as we go, continuous improvement



**END**



# The 106 colleges and universities in Massachusetts

American International College	Curry College	Dean College	Massachusetts Institute of Technology	Simmons University
Amherst College	Eastern Nazarene College		Massachusetts Maritime Academy	Smith College
Anna Maria College	Emerson College		Massachusetts School of Law	Springfield College
Assumption College	Emmanuel College		Massasoit Community College	Springfield Technical Community College
Babson College	Endicott College		MCPHS University	Stonehill College
Bard College at Simon's Rock	Fisher College		Merrimack College	Suffolk University
Bay Path University	Fitchburg State University		MGH Institute of Health Professions	The New England Conservatory of Music
Becker College	Framingham State University		Middlesex Community College	Tufts University
Benjamin Franklin Institute of Technology	Franklin W Olin College of Engineering		Montserrat College of Art	University of Massachusetts Medical School
Bentley University	Gordon College		Mount Holyoke College	Worcester
Berklee College of Music	Gordon-Conwell Theological Seminary		Mount Wachusett Community College	University of Massachusetts-Amherst
Berkshire Community College	Greenfield Community College		New England College of Optometry	University of Massachusetts-Boston
Boston Architectural College	Hampshire College		New England Law-Boston	University of Massachusetts-Dartmouth
Boston Baptist College	Harvard University		Nichols College	University of Massachusetts-Lowell
Boston College	Hebrew College		North Bennet Street School	Urban College of Boston
Boston Graduate School of Psychoanalysis	Hellenic College		North Shore Community College	Wellesley College
Boston University	Holy Cross		Northeastern University	Wentworth Institute of Technology
Brandeis University	Greek Orthodox School of Theology		Northern Essex Community College	Western New England University
Bridgewater State University	Holyoke Community College		Northpoint Bible College	Westfield State University
Bristol Community College	Hult International Business School		Pine Manor College	Wheaton College
Bunker Hill Community College	Laboure College		Pope St John XXIII National Seminary	William James College
Cambridge College	Lasell College		Quincy College	Williams College
Cape Cod Community College	Lawrence Memorial Hospital School of Nursing		Quinsigamond Community College	Worcester Polytechnic Institute
Clark University	Lesley University		Regis College	Worcester State University
College of Our Lady of the Elms	Longy School of Music of Bard College		Roxbury Community College	
College of the Holy Cross	Massachusetts Bay Community College		Saint John's Seminary	
Conway School of Landscape Design	Massachusetts College of Art and Design		Salem State University	
	Massachusetts College of Liberal Arts		Signature Healthcare Brockton Hospital School of Nursing	

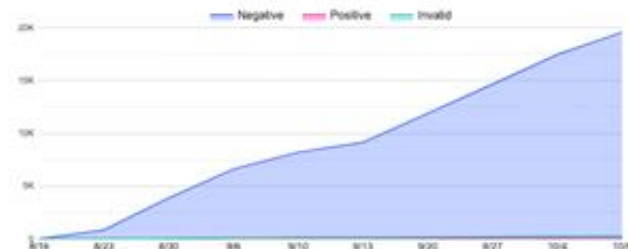


# Results to date

Dashboard showing cumulative asymptomatic tests, # of positive

## COVID-19 Dashboard

CUMULATIVE ASYMPTOMATIC TEST RESULTS



### DEFINITIONS

#### Total asymptomatic test results in past 7 testing days

Moving sum of tests results from the asymptomatic testing program on campus in the past seven testing days. Reported numbers are based on results received as of midnight the day before the dashboard is posted for test samples collected two days before the dashboard is posted. Weekly totals in graphs are based on totals for calendar weeks noted.



MyWellesley

WELLESLEY COLLEGE

Search

Give

Keeping  
Wellesley  
Healthy

## COVID-19 Dashboard

Wellesley is partnering with the [Broad Institute of MIT and Harvard](#) to provide asymptomatic testing for all students on campus and designated members of our faculty and staff. This dashboard reports on test results from the asymptomatic testing program in the last seven testing days and the number of positive cases in our on-campus community during the same time period. Numbers are updated each weekday, and the graphs include weekly positive cases to date and cumulative asymptomatic test results.

UPDATED OCTOBER 9, 2020

TOTAL ASYMPTOMATIC  
TEST RESULTS IN PAST  
7 TESTING DAYS

3,757

POSITIVE CASES IN  
PAST 7 TESTING DAYS

1

[TOWN OF WELLESLEY DASHBOARD](#)

[MA COVID-19 PUBLIC HEALTH REPORT](#)