

Data Overview - Riverside

Stuart Andreason

Federal Reserve Bank of Atlanta

Poverty Rate

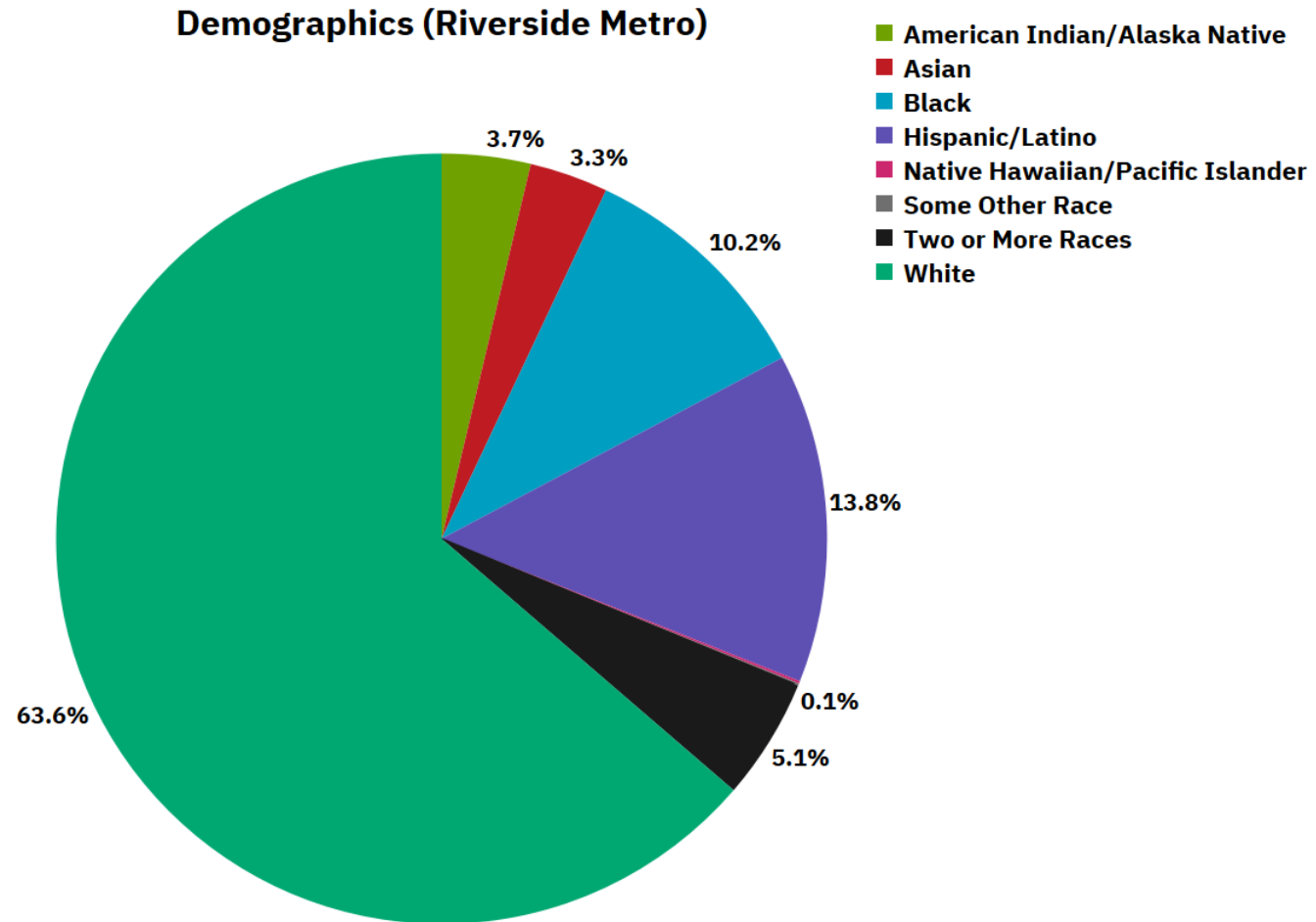
- Riverside-San Bernardino-Ontario Metro— 13.1%
- City of Riverside – 11.5%

Median wages (population 16 and over)

- Riverside-San Bernardino-Ontario Metro - \$35,713
- City of Riverside - \$32,431

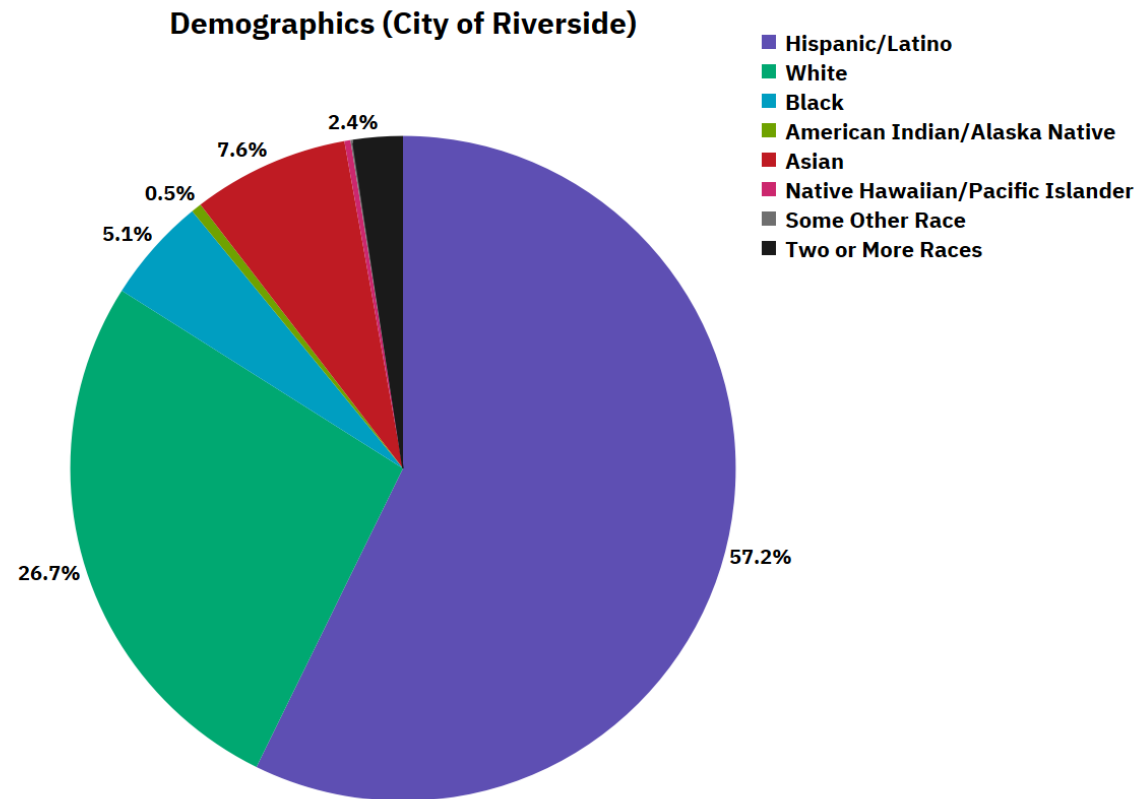
Source: U.S. Census Bureau American Community Survey
2019 1-Year Estimates

Basic Demographics and Economic Stresses



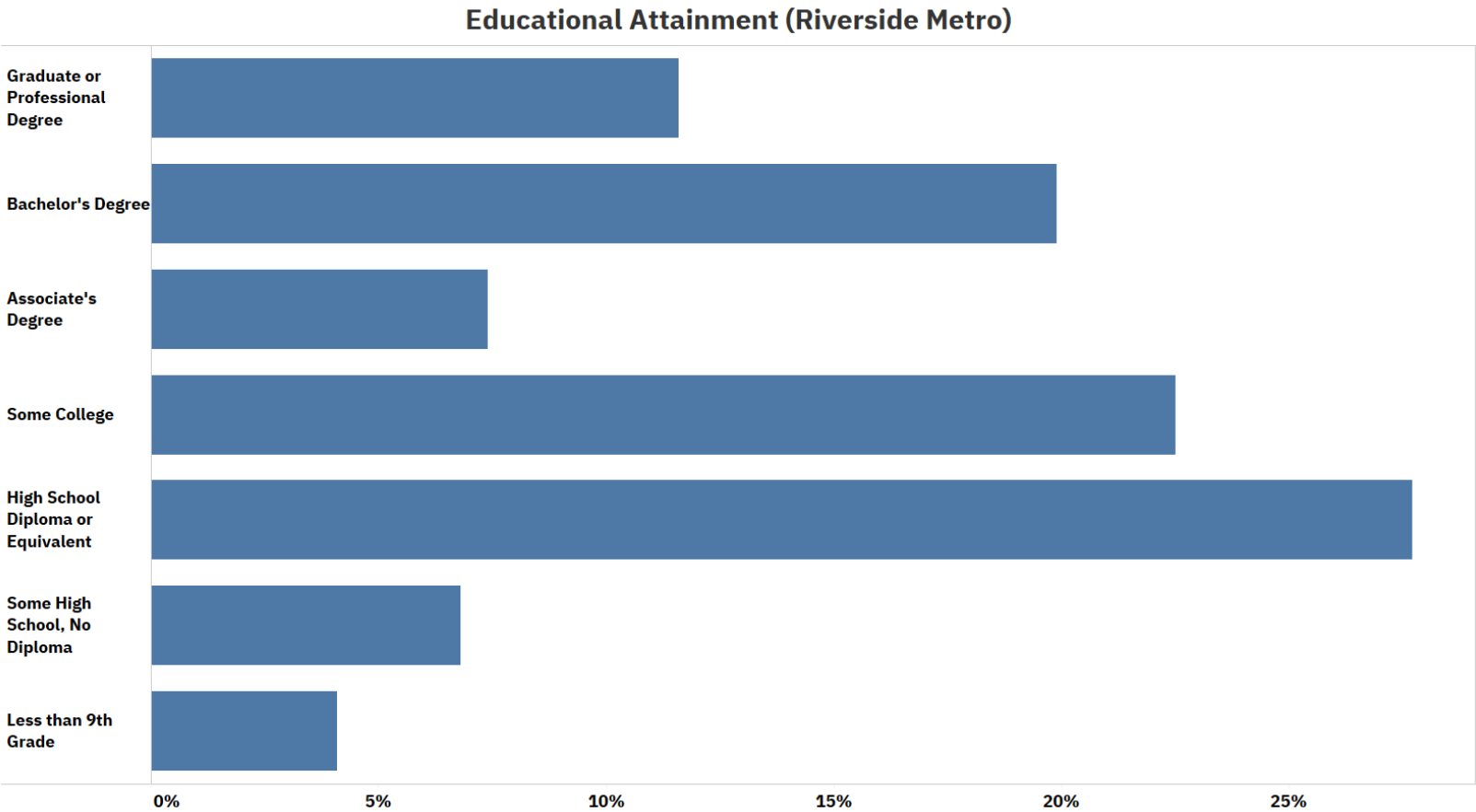
Source: U.S. Census Bureau American Community Survey 2019
1-Year Estimates

Basic Demographics and Economic Stresses



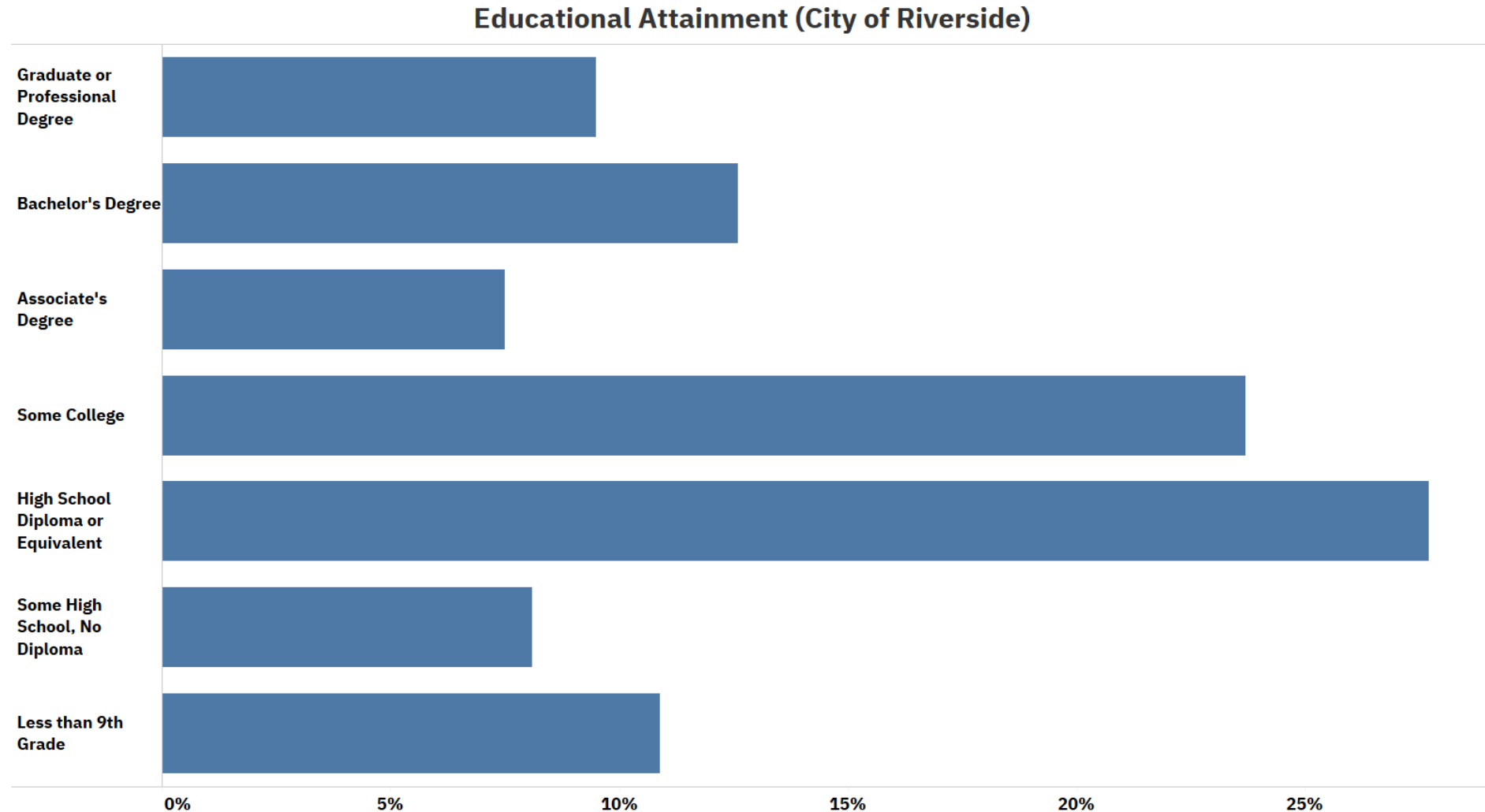
Source: U.S. Census Bureau American Community Survey 2019
1-Year Estimates

Riverside-San Bernardino-Ontario Metro Educational Attainment



Source: U.S. Census Bureau American Community Survey 2019
1-Year Estimates

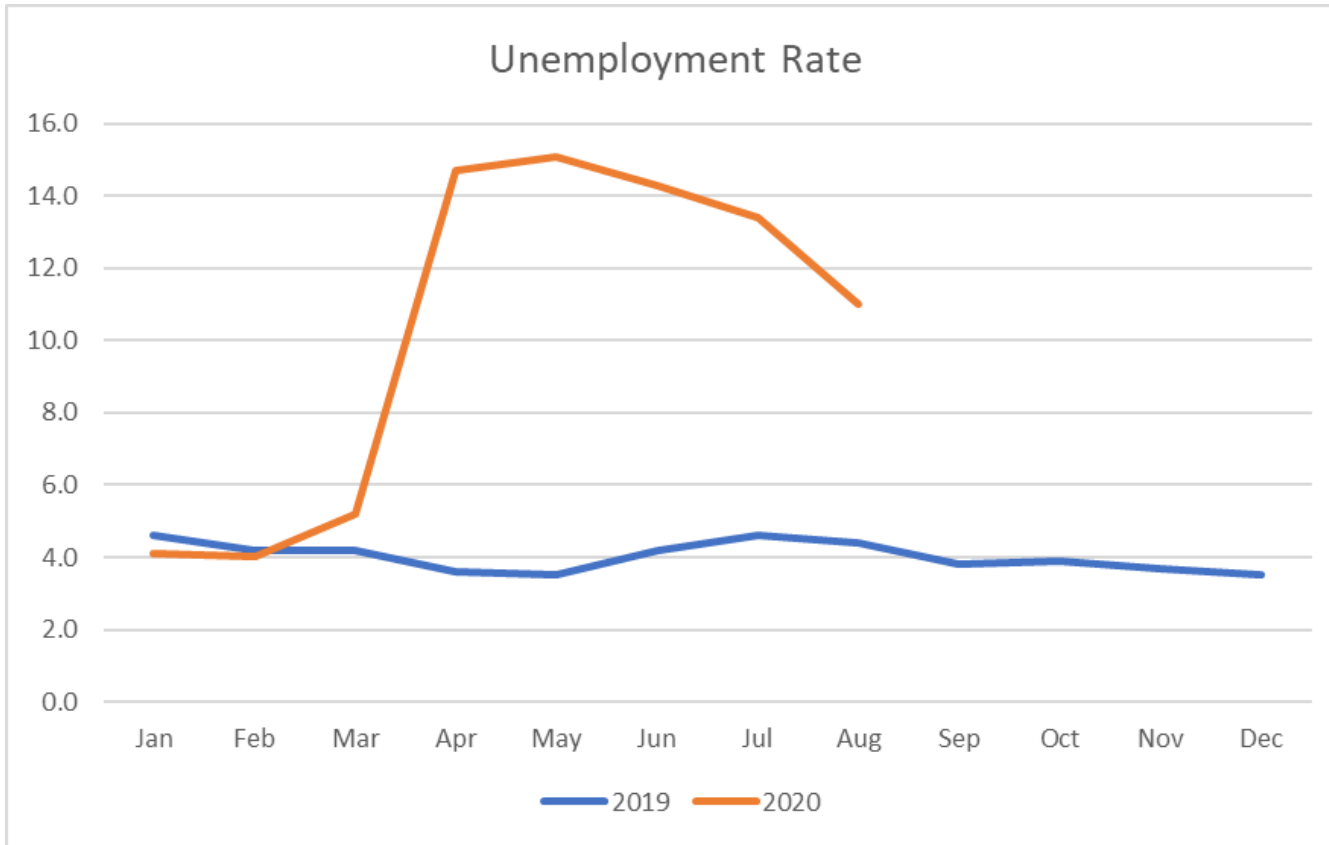
City of Riverside Educational Attainment



Source: U.S. Census Bureau American Community Survey 2019
1-Year Estimates

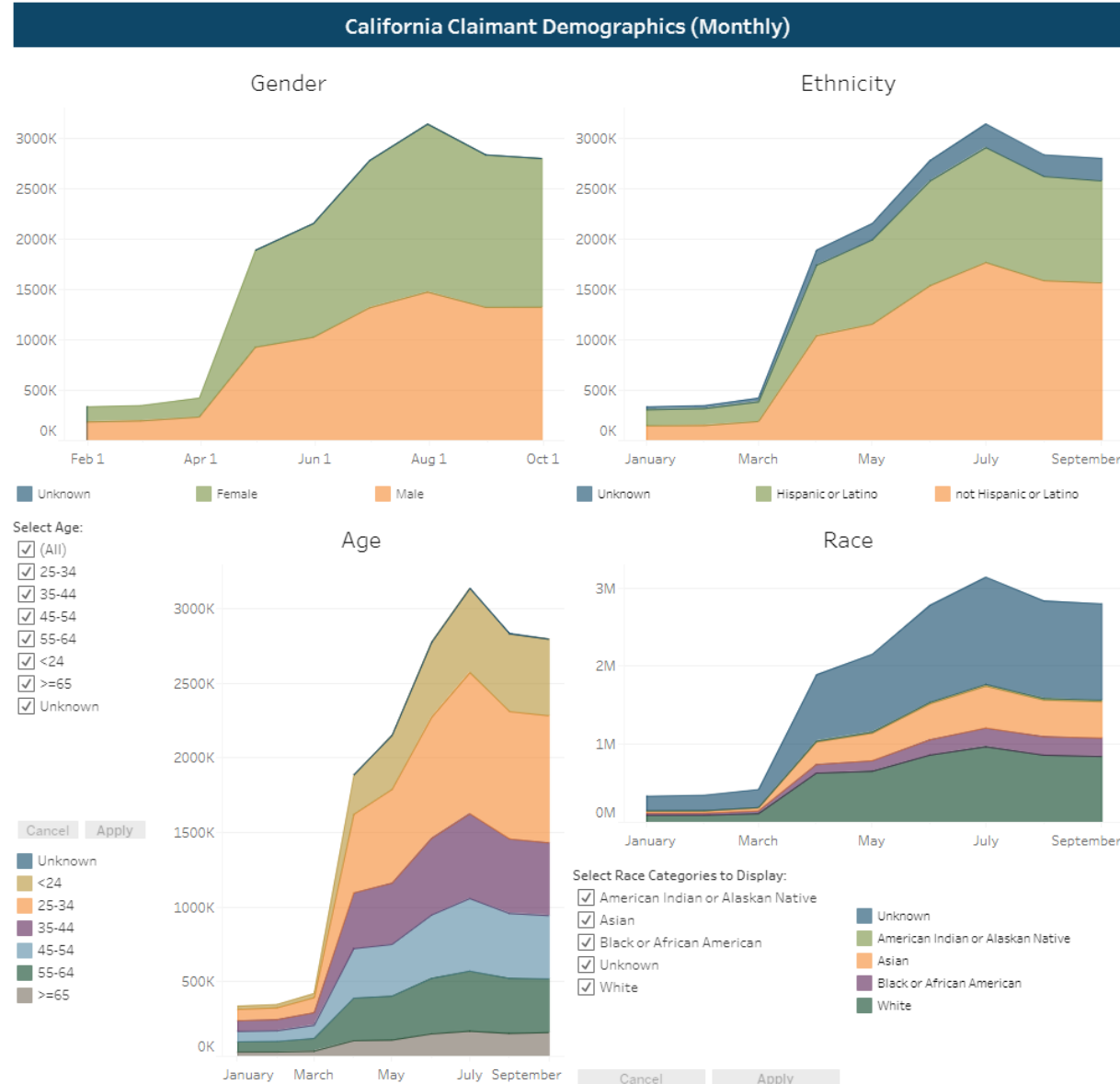
Unemployment remains significantly higher post-COVID 19

Riverside-San Bernardino-Ontario Metro Unemployment Rate



- City of Riverside unemployment rate – 4.7%

Unemployment Claims – California



- Women have fared worse –
 - 52.6% of claimants were women compared to 45.4% of the workforce
- 48.8% of claimants were under 35 years old compared to 36.3% of the workforce
- 8.4% of claimants were Black or African American compared to 6.1% of the workforce
- During the week of September 26, more workers (3,493,940) were on the new Pandemic Unemployment Assistance Program than the traditional (2,796,328)

*Percentages are from September 2020 Claims

California Unemployment Claims by Industry

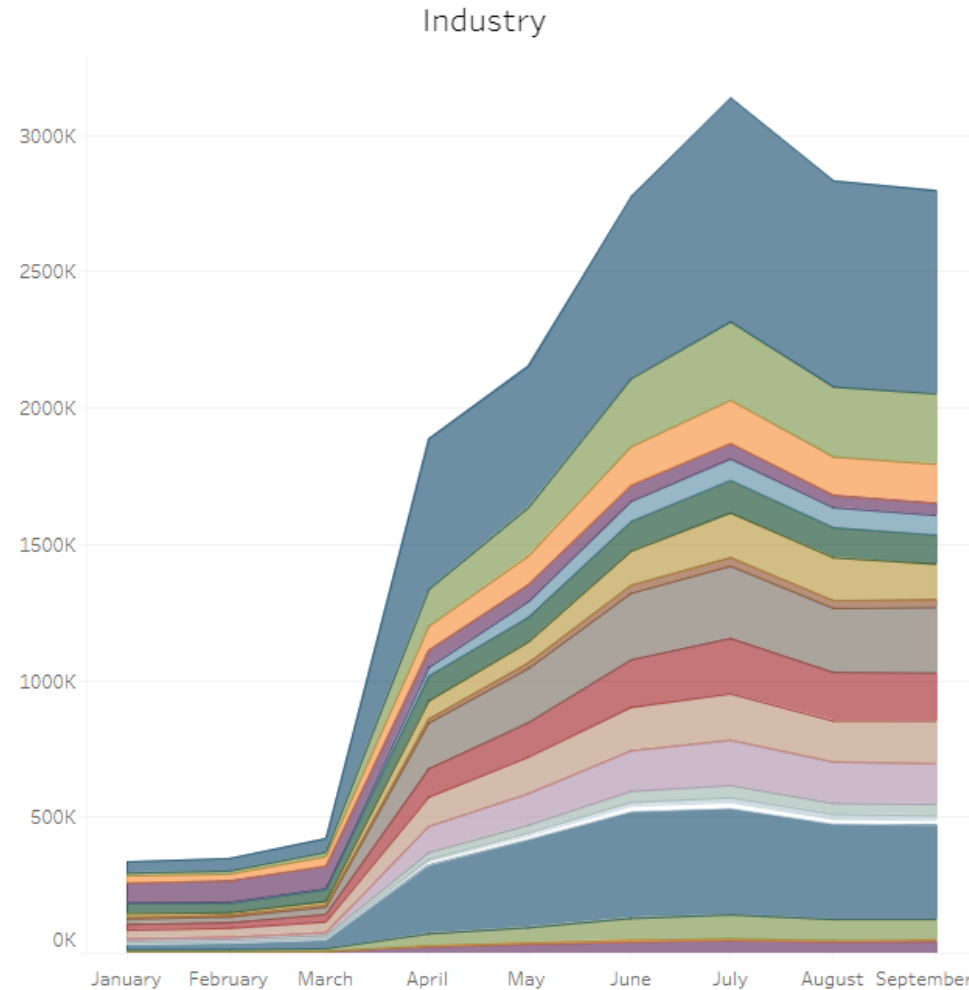
Select Industries to Display:

- ☒ (All)
- ☒ Accommodation and Food Services
- ☒ Administrative & Support/Waste Management/Re...
- ☒ Agriculture/Forestry/Fishing/Hunting
- ☒ Arts, Entertainment & Recreation
- ☒ Construction
- ☒ Educational Services
- ☒ Finance & Insurance
- ☒ Health Care & Social Assistance
- ☒ Industry Information Not Available
- ☒ Information
- ☒ Manufacturing
- ☒ Mining
- ☒ Other Services (except Public Administration)
- ☒ Professional/Scientific/Technical Services
- ☒ Public Administration
- ☒ Real Estate, Rental & Leasing
- ☒ Retail Trade

Cancel

Apply

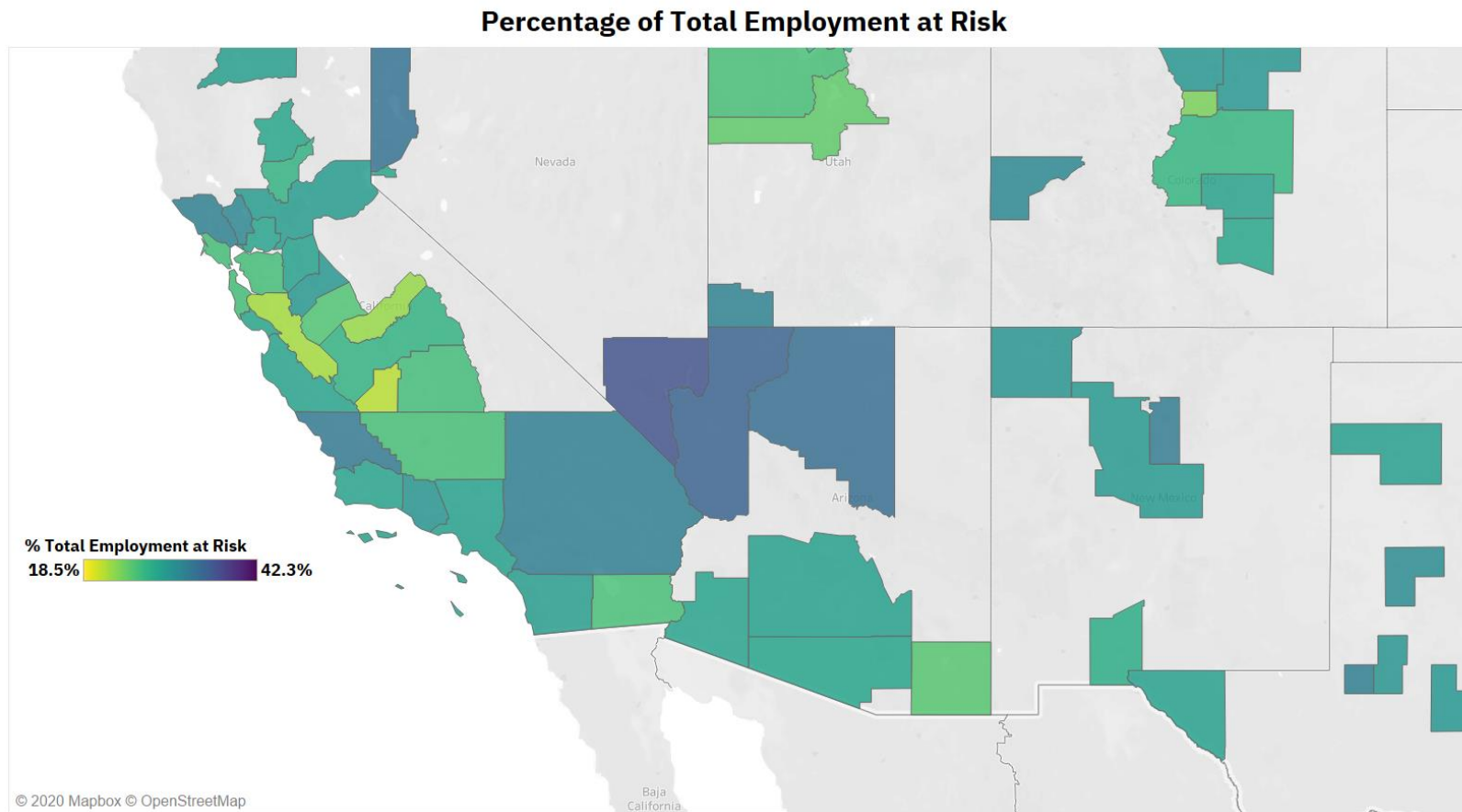
- Industry Information ...
- Accommodation and F...
- Administrative & Supp...
- Agriculture/Forestry/...
- Arts, Entertainment &...
- Construction
- Educational Services
- Finance & Insurance
- Health Care & Social A...
- Information
- Manufacturing
- Mining
- Other Services (excep...
- Professional/Scientifi...
- Public Administration
- Real Estate, Rental & L...
- Retail Trade
- Transportation & War...
- Utilities
- Wholesale Trade



- 9.2% - Accommodation and Food Services
- 5.1% - Administrative Support and Waste Management
- 12.4% - Retail Trade
- 5.5% - Manufacturing
- 8.6% - Healthcare
- 3.8% - Construction

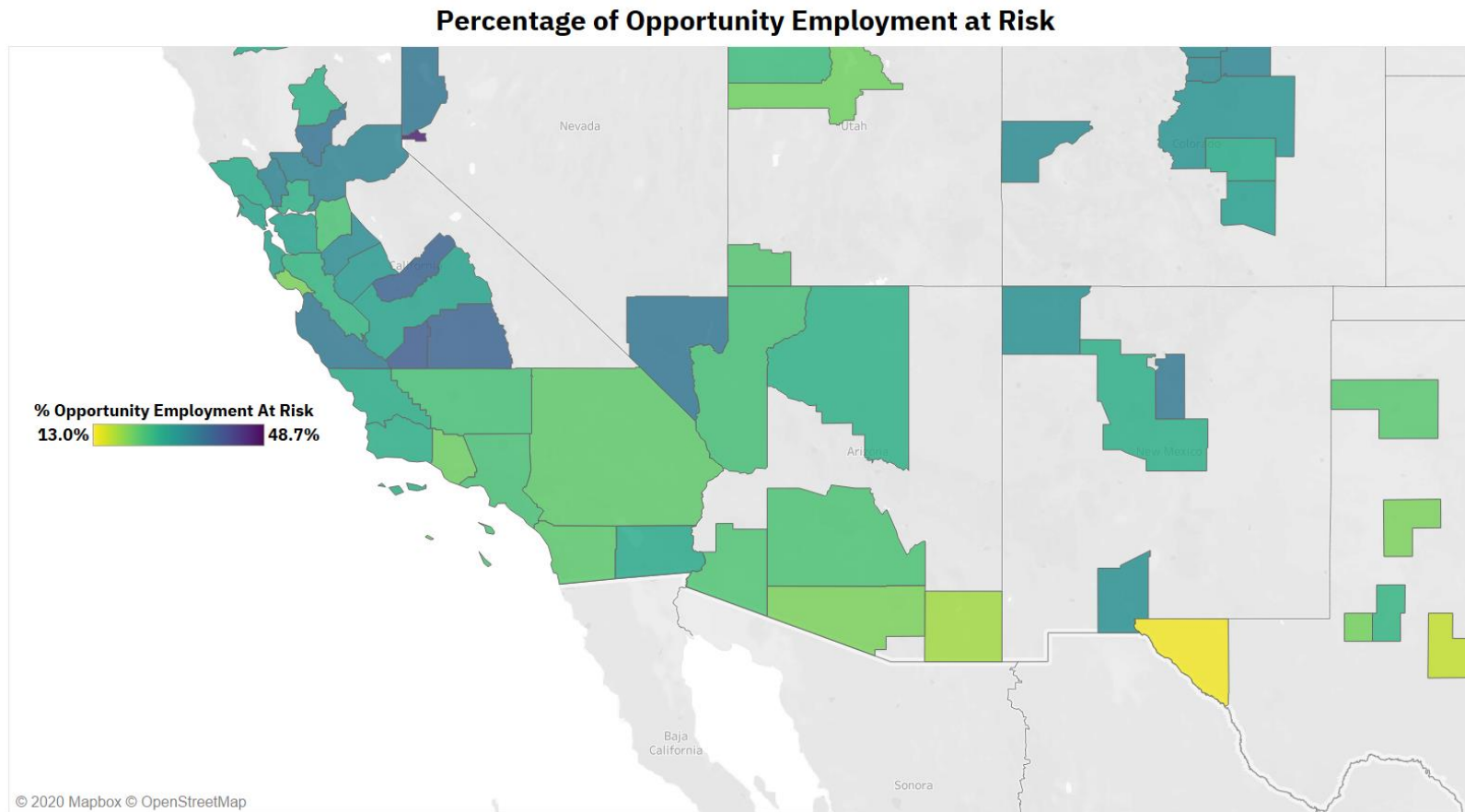
*Percentages are from September 2020 Claims

Riverside-San Bernardino-Ontario Total Employment



Source:
Atlanta Fed Center for
Workforce and Economic
Opportunity Analysis of
McKinsey Global Institute
Automation Risk Index and
COVID Exposure Index
using BLS Occupational
Employment Statistics Data
in the [Opportunity
Occupations Monitor](#)

Riverside-San Bernardino-Ontario Opportunity Employment



Source:

Atlanta Fed Center for Workforce
and Economic Opportunity Analysis
of McKinsey Global Institute
Automation Risk Index and COVID
Exposure Index using BLS
Occupational Employment
Statistics Data in the [Opportunity
Occupations Monitor](#)

Note: Opportunity
occupations/employment are jobs
that pay above regional median
wage but do not require a
bachelors degree, see more at the
[Atlanta Fed CWEO Opportunity
Occupations Monitor](#)

Riverside-San Bernardino-Ontario Metro

Top Ten Jobs at Risk

	Total Employment	Opportunity Employment
Laborers And Freight, Stock, And Material Movers, Hand	54,500	0
Cashiers	48,570	0
Retail Salespersons	44,880	0
Office Clerks, General	27,440	0
Waiters And Waitresses	23,430	0
Secretaries And Administrative Assistants, Except Legal, Medical, And Executive	19,080	16,347
Industrial Truck And Tractor Operators	16,290	0
Carpenters	15,440	15,440
Cooks, Restaurant	14,510	0
Bookkeeping, Accounting, And Auditing Clerks	13,780	0

Top Ten Opportunity Jobs at Risk

	Opportunity Employment	Total Employment
Secretaries And Administrative Assistants, Except Legal, Medical, And Executive	16,347	19,080
Carpenters	15,440	15,440
First-Line Supervisors Of Retail Sales Workers	8,824	12,020
Dining Room And Cafeteria Attendants And Bartender Helpers	8,280	8,280
Production, Planning, And Expediting Clerks	3,841	4,810
Amusement And Recreation Attendants	3,410	3,410
Securities, Commodities, And Financial Services Sales Agents	2,494	3,100
Dispatchers, Except Police, Fire, And Ambulance	2,054	2,180
Payroll And Timekeeping Clerks	1,264	1,880
Chefs And Head Cooks	894	1,040

Source:
Atlanta Fed Center for Workforce and Economic Opportunity Analysis of McKinsey Global Institute Automation Risk Index and COVID Exposure Index using BLS Occupational Employment Statistics Data in the [Opportunity Occupations Monitor](#)

Riverside-San Bernardino-Ontario Metro's industry mix affects the total number of potential jobs affected

CBO Estimates

- 61% of Riverside-San Bernardino-Ontario's industry employment demand expected to be impacted compared with 49.6% statewide

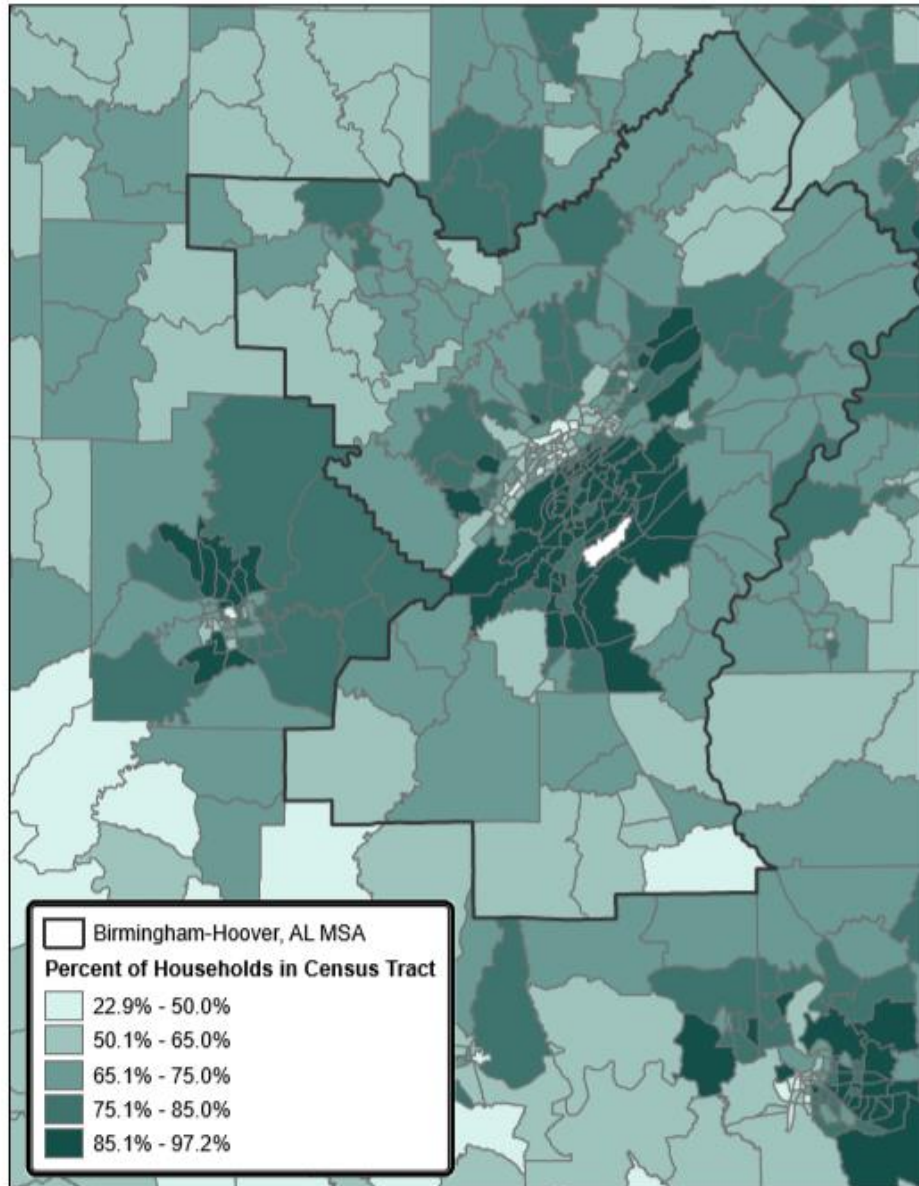
Work from home estimates (pre-pandemic)

- 24.7% of Riverside-San Bernardino-Ontario's workers predicted to be able to work from home compared with 28.4% statewide

Source: [*The Digital Divide and the Pandemic: Working from Home and Broadband and Internet Access*](#)

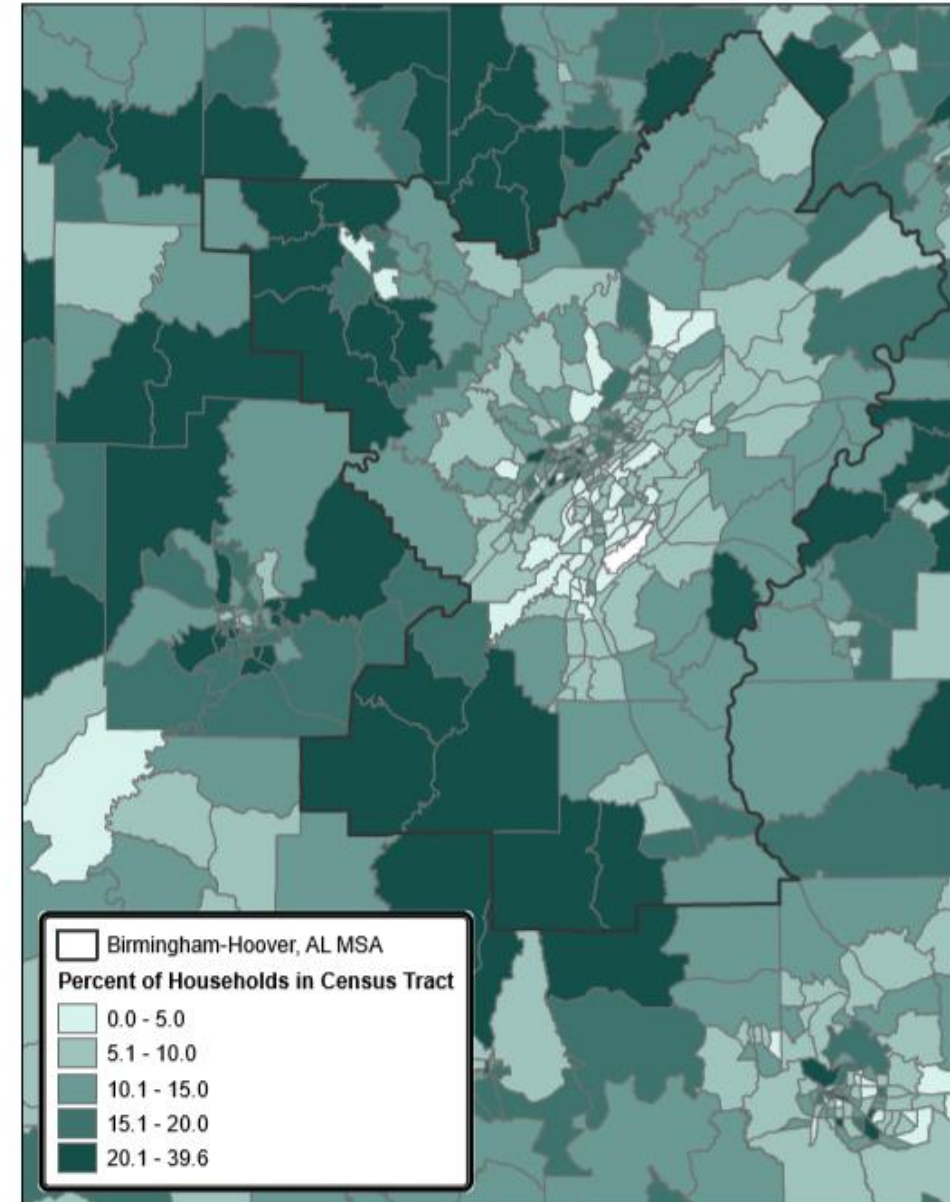
Sources: [Congressional Budget Office 2006, A Potential Influenza Pandemic: Possible Macroeconomic and Policy Issues](#); U.S. Bureau of Labor Statistics' Quarterly Census of Employment and Wages, 2019 Q1–Q3 data; and U.S. Bureau of Labor Statistics' American Time Use Survey: 2018 Results.

Percent of Households with Broadband Internet Service
in the Birmingham-Hoover Metropolitan Area
by Census Tract, 2014-2018



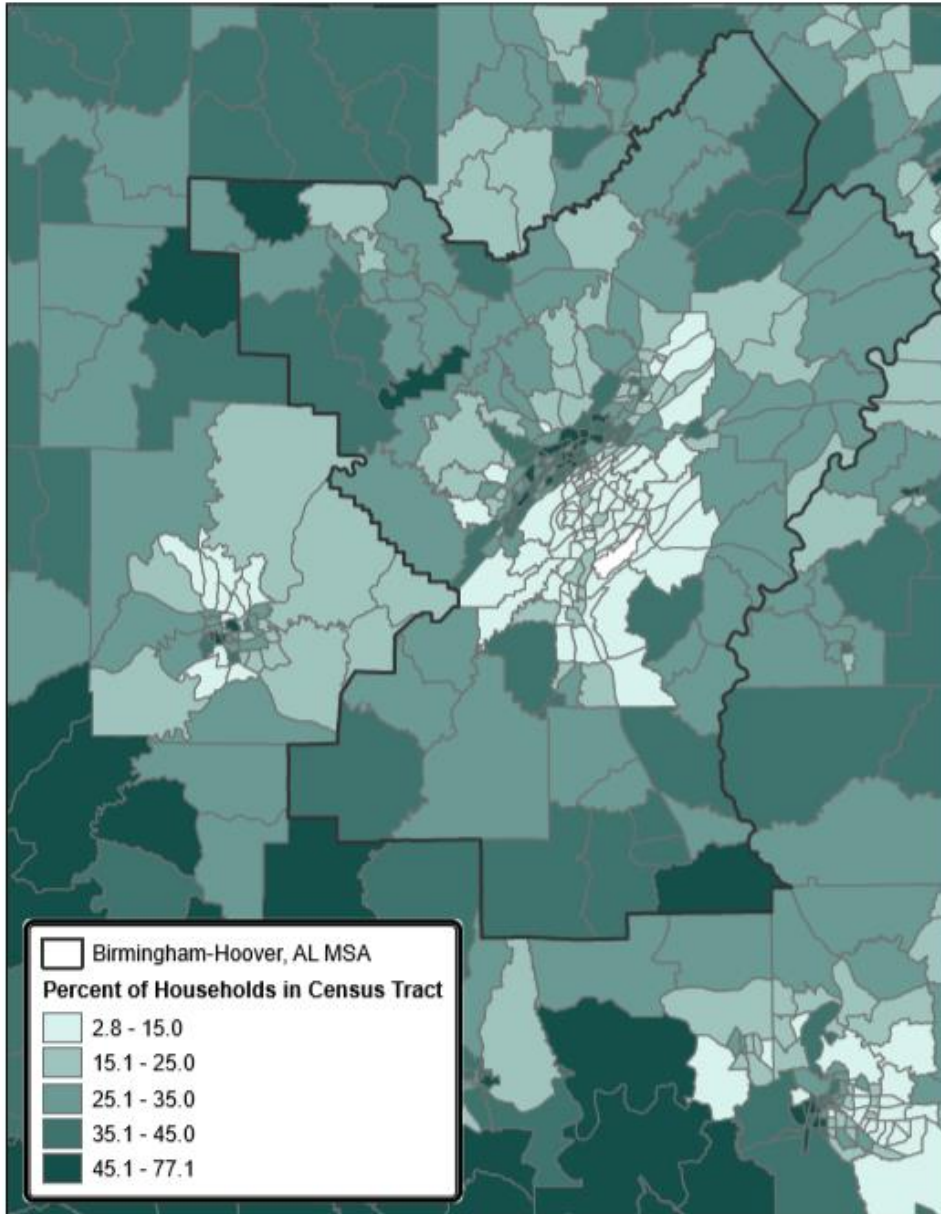
Source: Institute for Policy & Social Research, The University of Kansas;
data from U.S. Census Bureau, 2014-2018 American Community Survey.

Percent of Households with Broadband - Cellular Only Internet Service
in the Birmingham-Hoover Metropolitan Area
by Census Tract, 2014-2018



Source: Institute for Policy & Social Research, The University of Kansas;
data from U.S. Census Bureau, 2014-2018 American Community Survey.

Percent of Households with Dial-up or No Internet Service
in the Birmingham-Hoover Metropolitan Area
by Census Tract, 2014-2018



Internet access and digital divides are evident as both urban and rural many houses that could have internet likely cannot afford service or do not purchase service

Riverside-San Bernardino-Ontario Metro

Internet Access Overview

Internet Access

- 89.6% of all households have an internet subscription
- 75.3% of all households have a high-speed connection
- 10.4% of all households have internet access through cellular data plans only
- 9% of all households have no internet subscription
- 27.7% of households earning less than \$20,000 have no internet subscription

Computing Devices

- 80.3% of all households have a desktop or laptop computer
- 9.3% of all households have a smartphone with no other device
- 4.5% of all households have no computing device

City of Riverside Internet Access Overview

Internet Access

- 91% of all households have an internet subscription
- 78% of all households have a high-speed connection
- 10.4% of all households have internet access through cellular data plans only
- 9% of all households have no internet subscription
- 27.7% of households earning less than \$20,000 have no internet subscription

Computing Devices

- 80.1% of all households have a desktop or laptop computer
- 9.2% of all households have a smartphone with no other device
- 3.9% of all households have no computing device