

Integrating Cardio-Oncology Expertise in Cancer Treatment and Survivorship Care



VANDERBILT HEART

Javid J. Moslehi, M.D.

Associate Professor of Medicine

Director, Cardio-Oncology Program

Co-Director, Vanderbilt Program for Optimizing

Immuno-oncology Therapy (V-POINT)

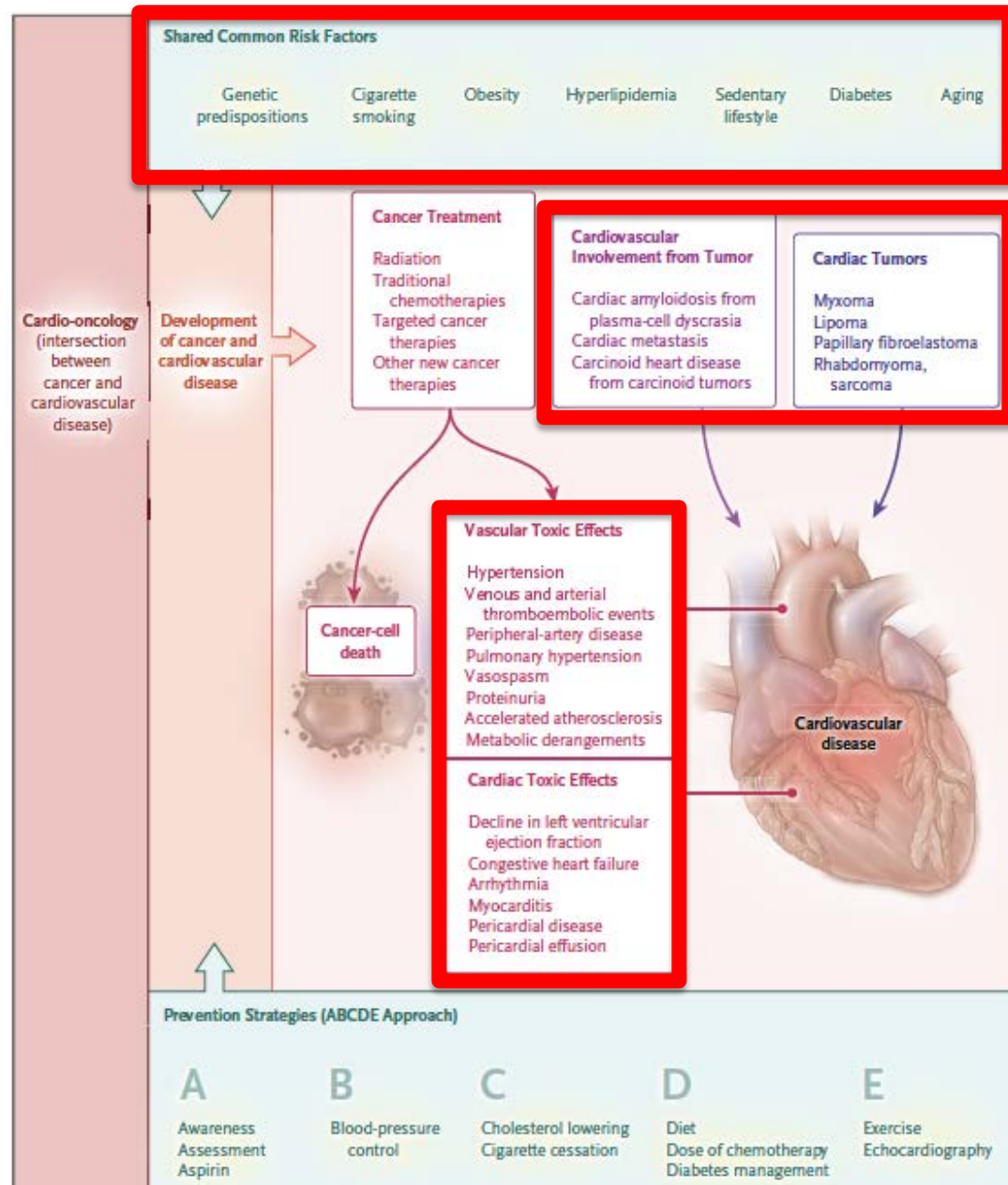
Vanderbilt University Medical Center

Nashville, TN

www.cardioonc.org

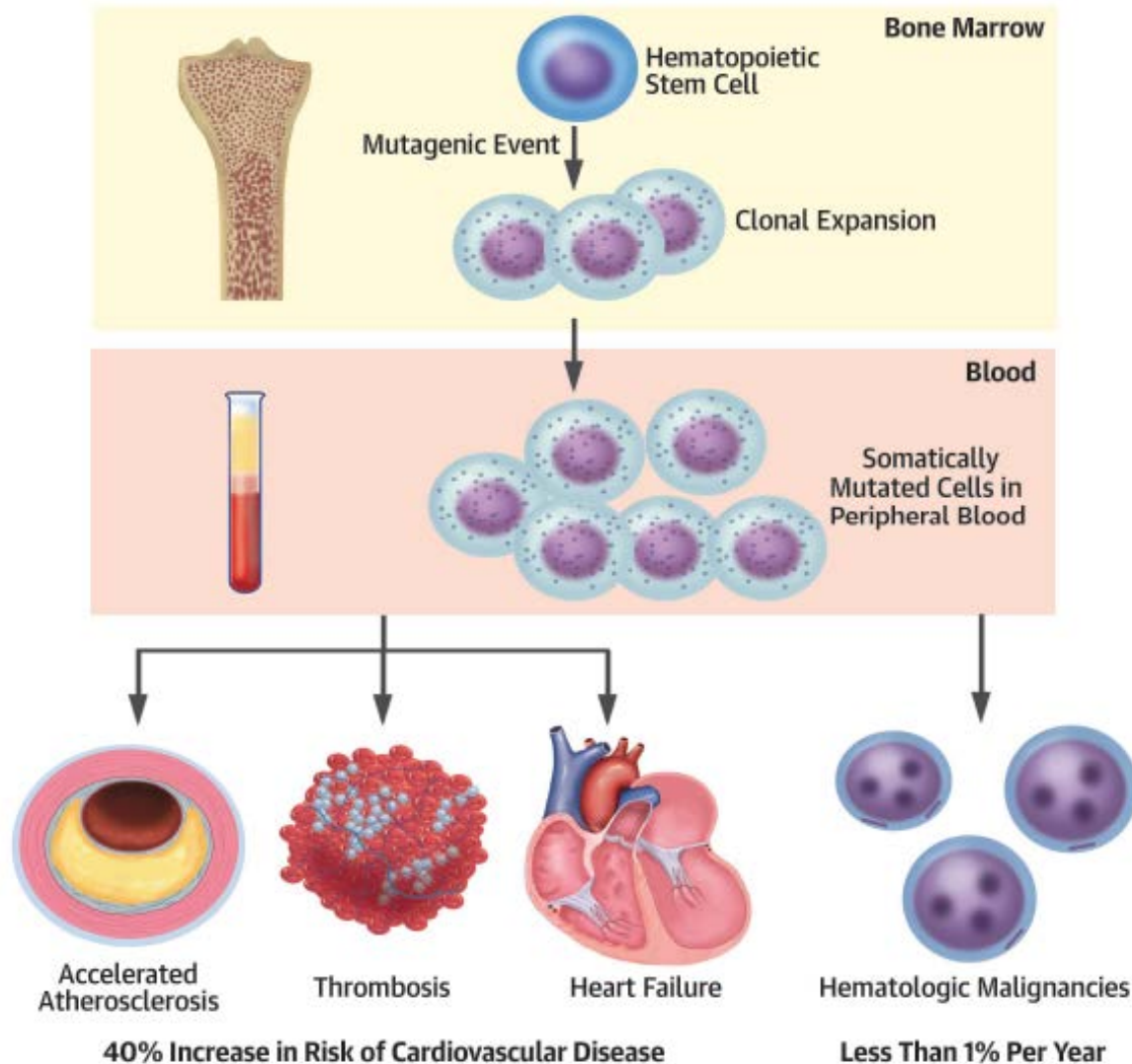
Twitter: @CardioOncology

World of Cardio-Oncology



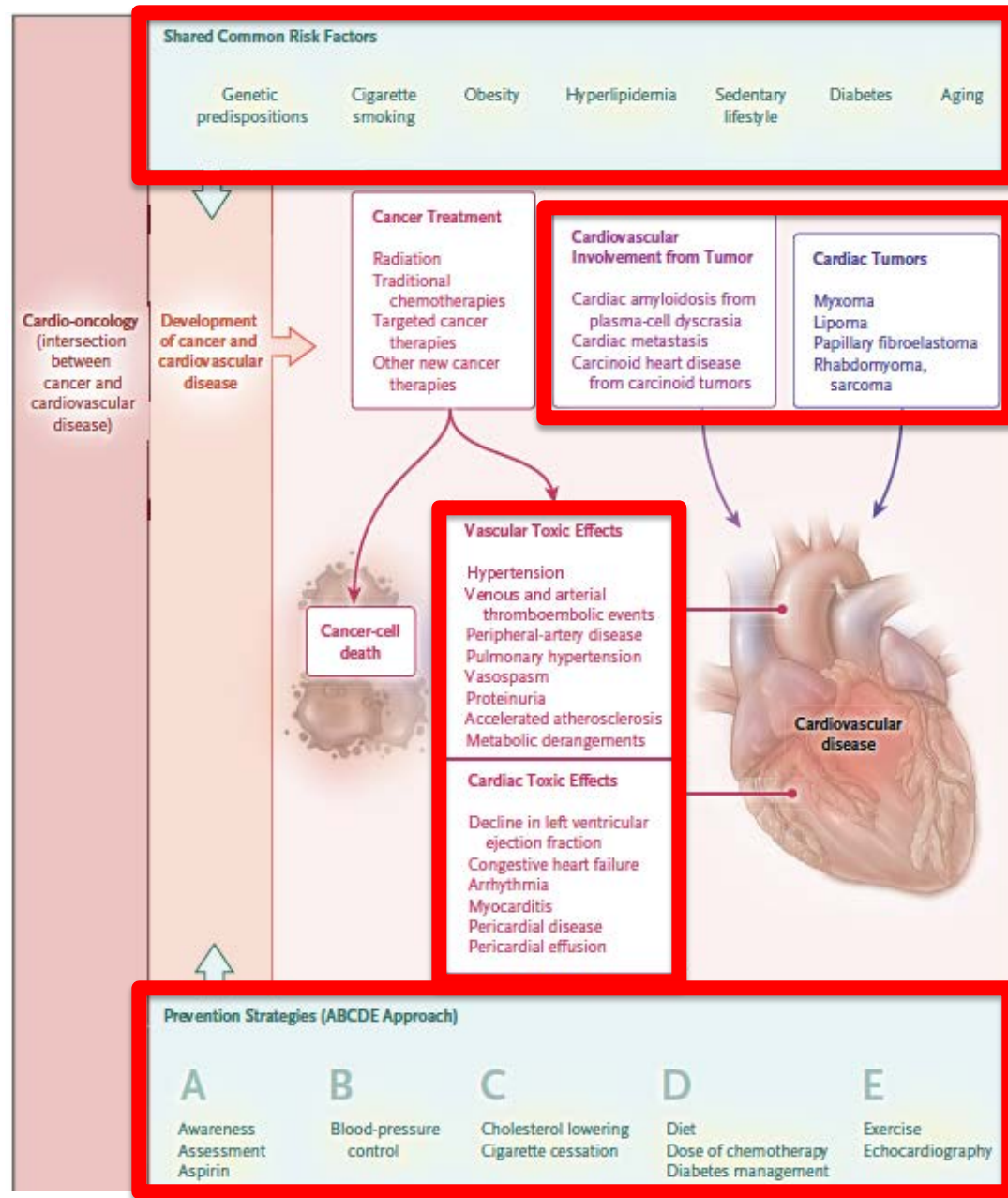
Moslehi. *NEJM*. 2016.
375(15):1457-1467

Clonal Hematopoiesis of Indeterminate Potential (CHIP)



Libby...Moslehi
et al. *JACC*.
2019.

World of Cardio-Oncology



Vanderbilt ABCDEs of Cardiovascular Disease Prevention in Cancer Survivors

CARDIOLOGY PATIENT PAGE

ABCDE Steps for Heart and Vascular Wellness

Following a Prostate Cancer Diagnosis

Jian Guan, MD, PhD; Jay Khambhati, MD; Lee W. Jones, PhD; Alicia Morgans, MD, MPH; Mohamad Allaf, MD; David F. Penson, MD, MPH; Javid Moslehi, MD

Table 4. ABCDE Steps to Prevent Cardiovascular Disease in Patients With Chronic Myeloid Leukemia Treated With a Tyrosine Kinase Inhibitor

Step
A: Awareness of cardiovascular disease signs and symptoms
A: Aspirin (in select patients)
A: Ankle-brachial index measurement at baseline and follow-up to document peripheral arterial disease
B: Blood pressure control
C: Cigarette/tobacco cessation
C: Cholesterol (regular monitoring and treatment, if treatment indicated)
D: Diabetes mellitus (regular monitoring and treatment, if treatment indicated)
D: Diet and weight management
E: Exercise

REVIEW ARTICLE

-Associated Cardiovascular id Leukemia

Montazeri....Moslehi. *Circulation*, 2014.
Unitt....Tolaney, Moslehi. *Circulation*, 2014.
Guan....Penson, Moslehi. *Circulation*, 2015.
Moslehi, Deininger. *JCO*. 2015.
Swiger...Blumenthal....Moslehi. Unpublished.



NCCN Guidelines Version 1.2020

Survivorship: Cardiovascular Disease Risk Assessment

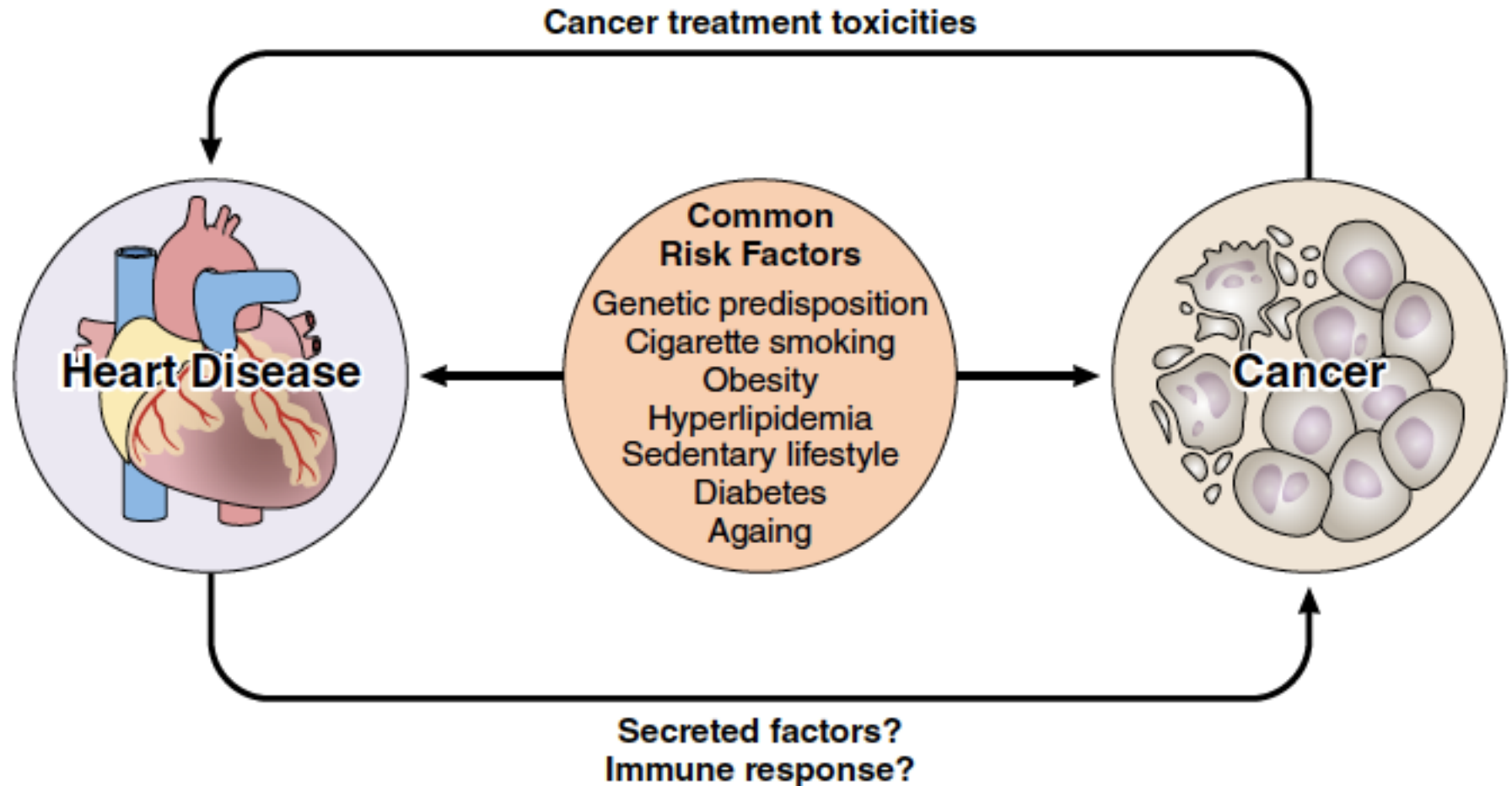
PRINCIPLES OF CARDIOVASCULAR DISEASE RISK ASSESSMENT

Table 1: ABCDEs to Promote Cardiovascular Wellness in Cancer Survivors ^C	
A	<ul style="list-style-type: none">• Awareness of risks and presentation of heart disease• Assessment of cardiovascular disease and cardiovascular risk• Aspirin use as appropriate (indicated for secondary prevention; clinician-survivor discussion required for primary prevention with careful weighing of benefits and risks)
B	<ul style="list-style-type: none">• Blood pressure monitoring/management (with clinician-survivor discussion regarding the use of hypertension treatment and blood pressure goals)
C	<ul style="list-style-type: none">• Cholesterol assessment/management (with clinician-survivor discussion regarding the use of statin therapy for primary prevention and lipid profile goals)• Cigarette/tobacco cessation (See NCCN Guidelines for Smoking Cessation)
D	<ul style="list-style-type: none">• Diet and weight management (See SNWM-1)• Dose (cumulative) of anthracyclines and/or radiation to heart• Diabetes mellitus prevention/treatment
E	<ul style="list-style-type: none">• Exercise (See SPA-1)• Echocardiogram and/or EKG based on individual risk

Cardio-Oncology in 2020: New Concepts

- Concept: Common risk factors may predispose to both cardiovascular disease and cancer
- Huge implications for Cancer Survivors (17,000,000 Americans)
- Explanation for emerging data where heart disease (heart failure) can predispose to cancer

Reverse Cardio-Oncology



Vanderbilt Cardio-Oncology Program



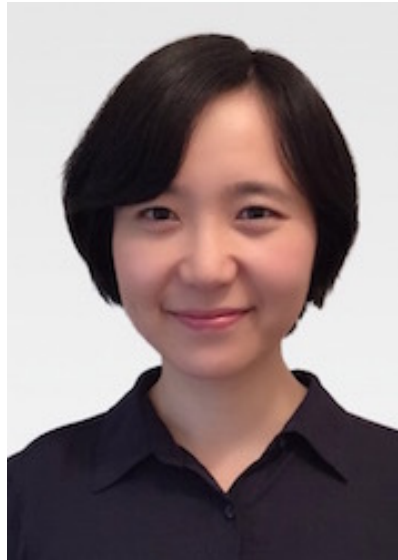
Vanderbilt Cardio-Oncology Fellows (2018-2020)



Joe-Elie Salem, M.D.

Faculty in cardiology
and clinical
pharmacology,
Sorbonne University
Funding: Grant

Manuscripts:
*NEJM, Lancet, Lancet
Oncology, JAMA
Cardiology, Circulation*



Weijuan Li, M.D.

Completing
cardiology fellowship
at Vanderbilt
Funding: 3rd year

Manuscripts:
*Circulation, JACC,
JAMA Oncology,
JAMA Cardiology*



Wouter Meijers, M.D.

Cardiology Fellow at
Groningen
(Netherlands)
Funding: Grant

Manuscripts:
*JACC, JAMA,
Circulation, ATVB*