

The logo is a solid orange square. Inside, there is a white rectangular frame. The text 'FOUNDATION FOR CHILD DEVELOPMENT' is written in white, uppercase, sans-serif font within the frame. Below this, a thin white horizontal line separates the name from the tagline. The tagline 'Connecting research, policy and practice to create systems that work.' is written in a smaller, white, lowercase, sans-serif font.

FOUNDATION  
FOR CHILD  
DEVELOPMENT

Connecting  
research, policy  
and practice to  
create systems  
that work.

# Workshop on Institutional Barriers and Incentives for Engaged Research

**Jacqueline Jones**

President and CEO

Foundation for Child Development



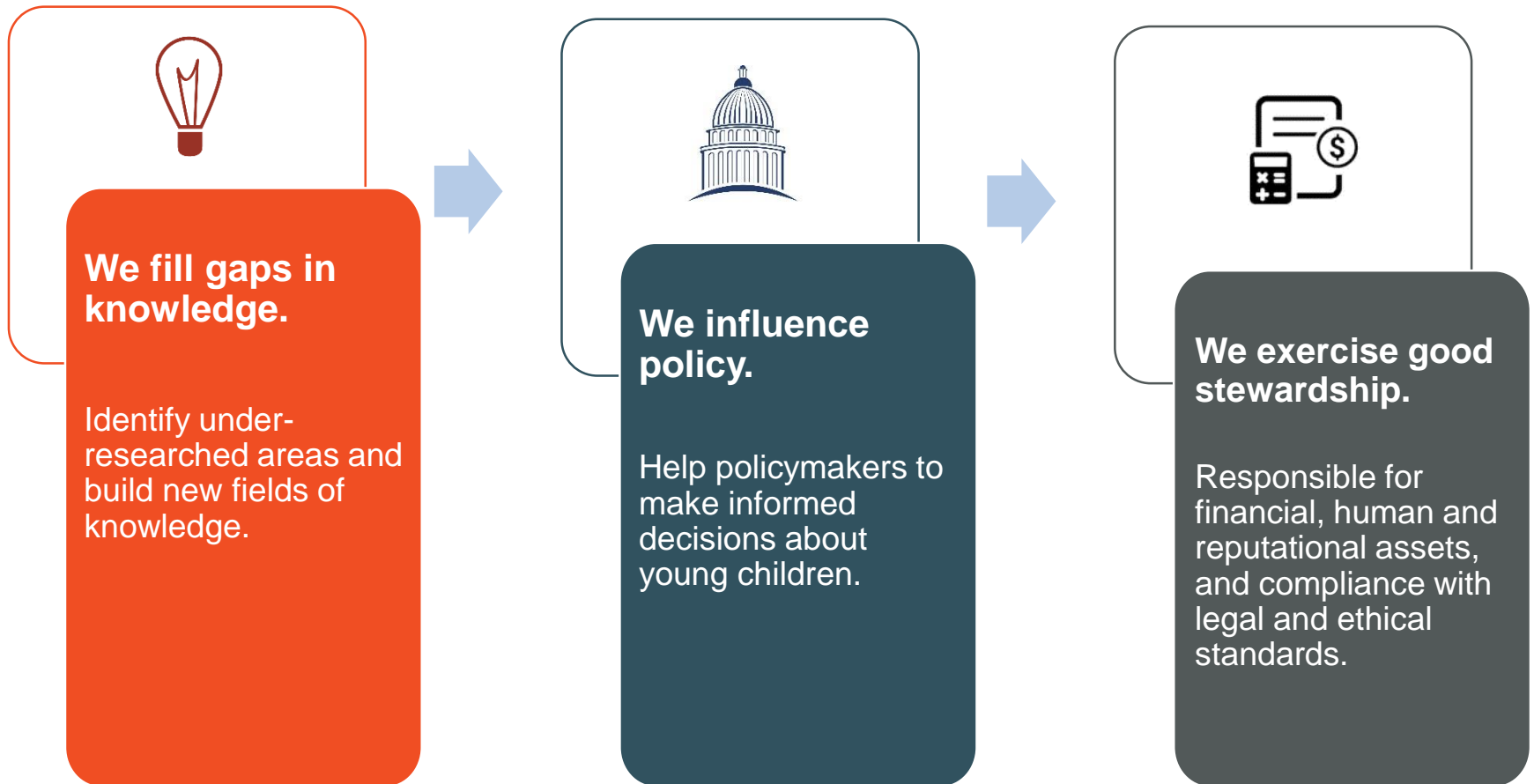
# MISSION

... to harness the power of *research* to ensure that all children benefit from *early learning experiences* that:

- *Affirm* their individual, family, and community assets,
- *Fortify* them against harmful consequences arising from poverty, racism, prejudice, and discrimination, and
- *Strengthen* their developmental potential.



# What We Do





# Our Tools:



**Research Support**

**Public  
Policy/Advocacy**

**Strategic  
Communications**



# Why Invest in an RPP?

1. Connect research, policy, and practice
2. Foster scholarship
3. Interest in implementation research
4. Prior philanthropic work



# NYC Early Childhood Research Network



## NYC Universal Pre-K Initiative Policymakers:

- Department of Education
- Administration for Children's Services
- Department of Health and Mental Hygiene
- Mayor's Office of Economic Opportunity

## Researchers:

- Approximately 14 Universities
- 10 Studies



# What would success look like?

- Build trust and cultivate partnership relationships
- Conduct rigorous research to guide action
- Support the partner practice organization
- Produce knowledge that can guide educational improvement
- Build capacity of participating researchers and practitioners

Hendrick, E. et al (2017), *Assessing Research-Practice Partnerships: Five Dimensions of Effectiveness*, New York: W.T. Grant Foundation.



# What we learned...

## *Trust*

- Establish trust and a culture of learning.
- Foster shared decision-making about the topics and research questions

## *Infrastructure*

- Engage a partner with content expertise to provide the infrastructure needed to build and sustain the relationship



# What we learned...



## *Balancing Participants' Needs*

- Balance researchers' academic freedom and public dissemination within a frame of continuous quality improvement
- Engage an independent and neutral facilitator

Foundation for Child Development, *The New York City Early Childhood Research Network: A Model for Integrating Research Policy, and Practice*. New York, NY: Foundation for Child Development.



# What we learned...

- Research can address real-world problems
- Relevance is embedded
- Rapid response models can be designed



## A graphic with a white background and a thick orange border. The text 'FOUNDATION FOR CHILD DEVELOPMENT' is at the top in large, bold, orange, sans-serif capital letters. Below it is a horizontal orange line. Underneath the line, the text 'Connecting research, policy and practice to create systems that work.' is written in a smaller, orange, sans-serif font, with each word on a new line and the first letter of each word capitalized.

A graphic with a white background and a thick orange border. The text 'FOUNDATION FOR CHILD DEVELOPMENT' is at the top in large, bold, orange, sans-serif capital letters. Below it is a horizontal orange line. Underneath the line, the text 'Connecting research, policy and practice to create systems that work.' is written in a smaller, orange, sans-serif font, with each word on a new line and the first letter of each word capitalized.

FOUNDATION  
FOR CHILD  
DEVELOPMENT

---

Connecting  
research, policy  
and practice to  
create systems  
that work.

A graphic with a white background and a thick orange border. The text 'FOUNDATION FOR CHILD DEVELOPMENT' is at the top in large, bold, orange, sans-serif capital letters. Below it is a horizontal orange line. Underneath the line, the text 'Connecting research, policy and practice to create systems that work.' is written in a smaller, orange, sans-serif font, with each word on a new line and the first letter of each word capitalized.