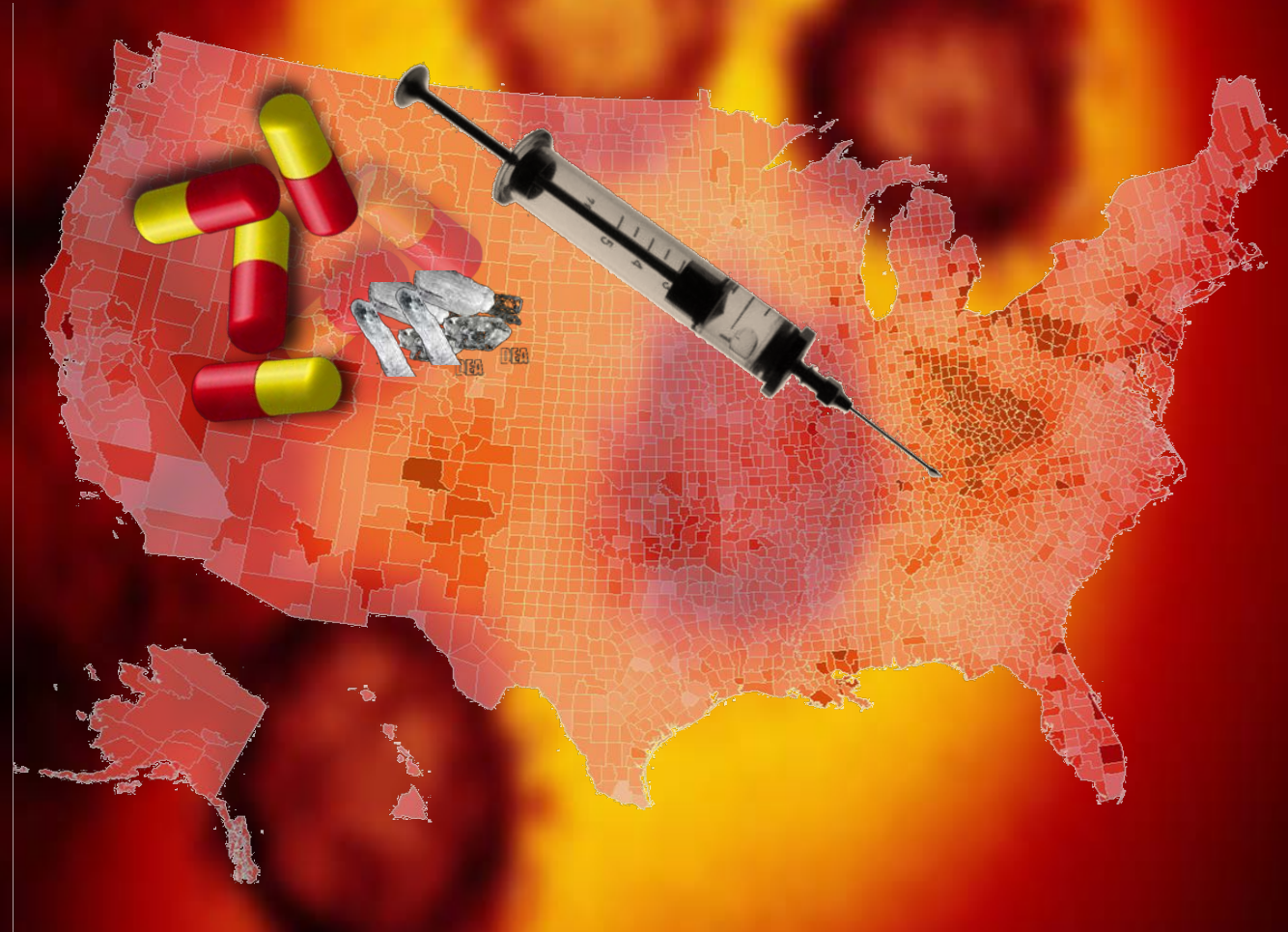


# The Intersection Of COVID-19 and Substance Use Disorder

Nora D. Volkow, M.D.  
Director  
National Institute  
on Drug Abuse



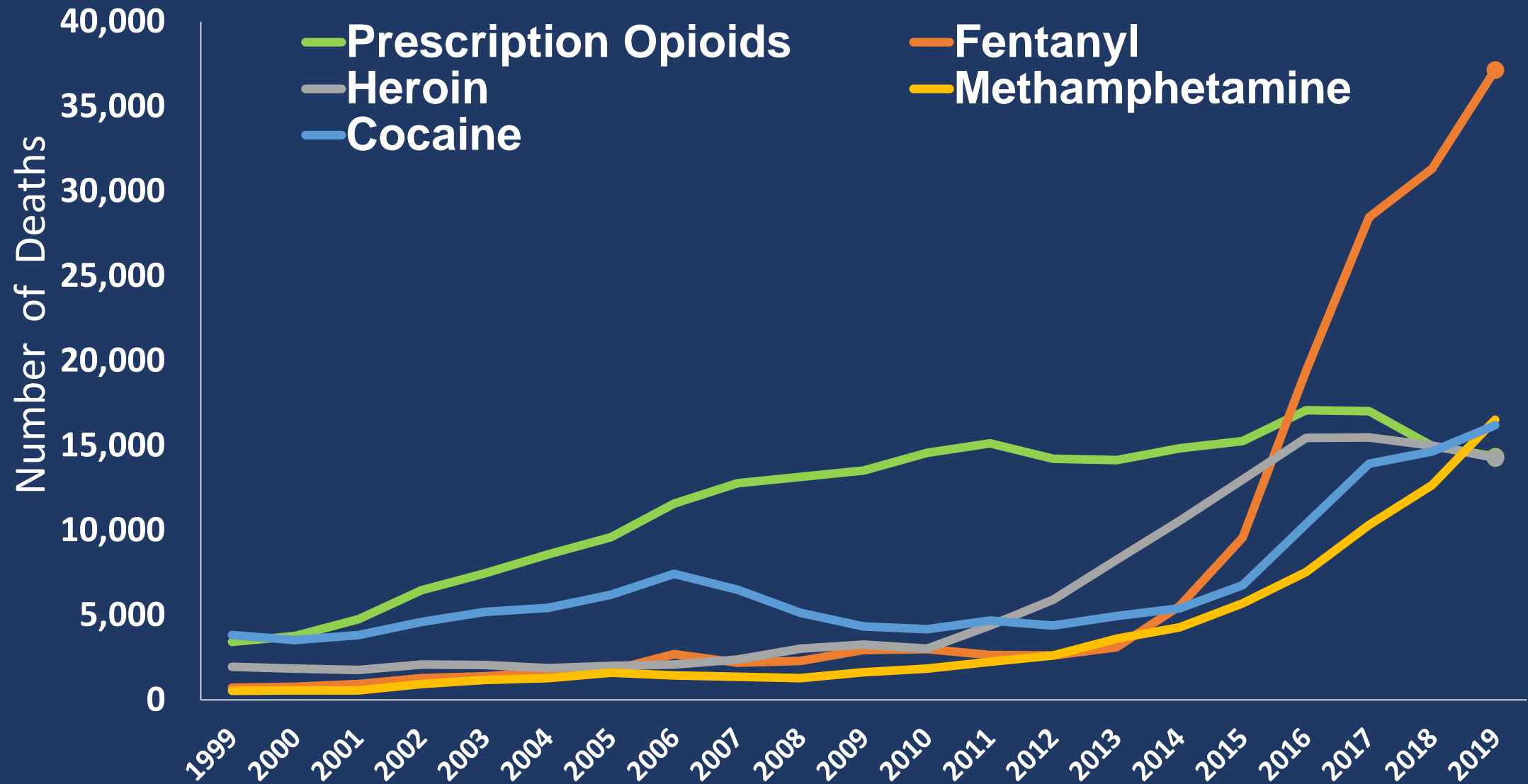
 @NIDAnews



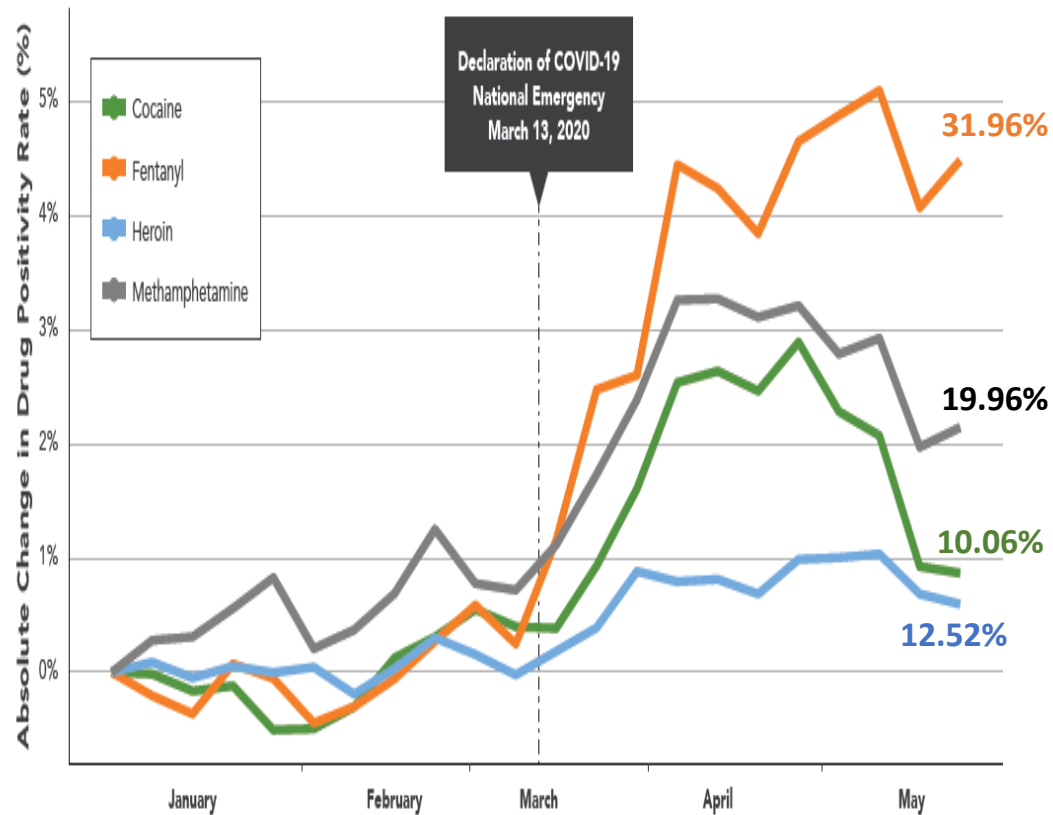
*Disclaimer: No endorsement of the National Academies, its programs or services, by NIH is intended.*

# 2019 Provisional Overdose Death Counts

## 4.6% Increase from 2018

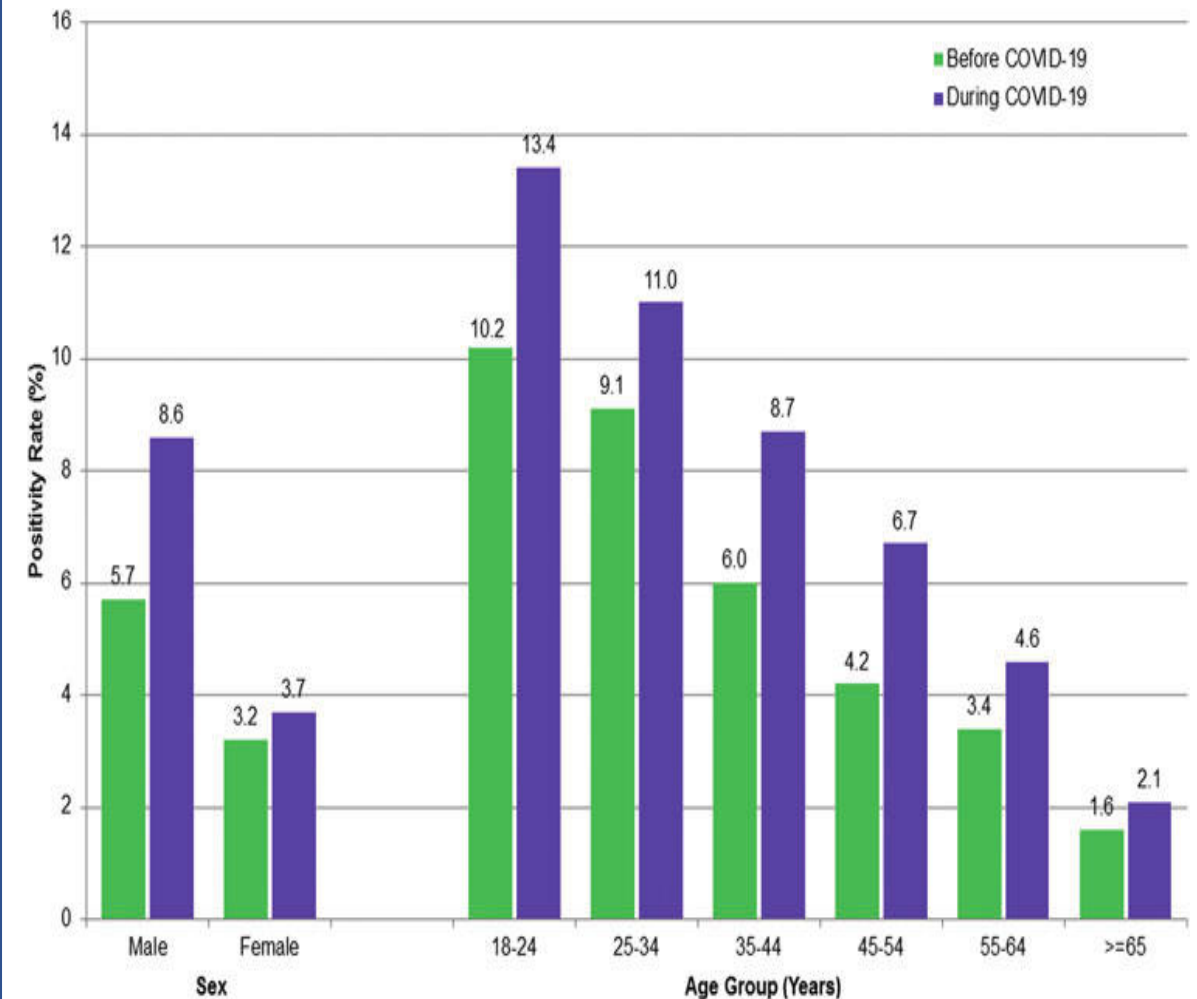


# Drug Use Increase During COVID



Millennium Health Signals Report™ **COVID-19**  
**Special Edition: Significant Changes in Drug Use During the Pandemic** Volume 2.1  
Published July 2020

## Fentanyl Positivity, by Age and Sex, Before and During COVID-19



*Niles JK et al., Population Health Management, 2020.*

# Overdoses Grew Dramatically During COVID Pandemic

Overdoses increased up to 42% per month during the pandemic, as compared to the same months in 2019.

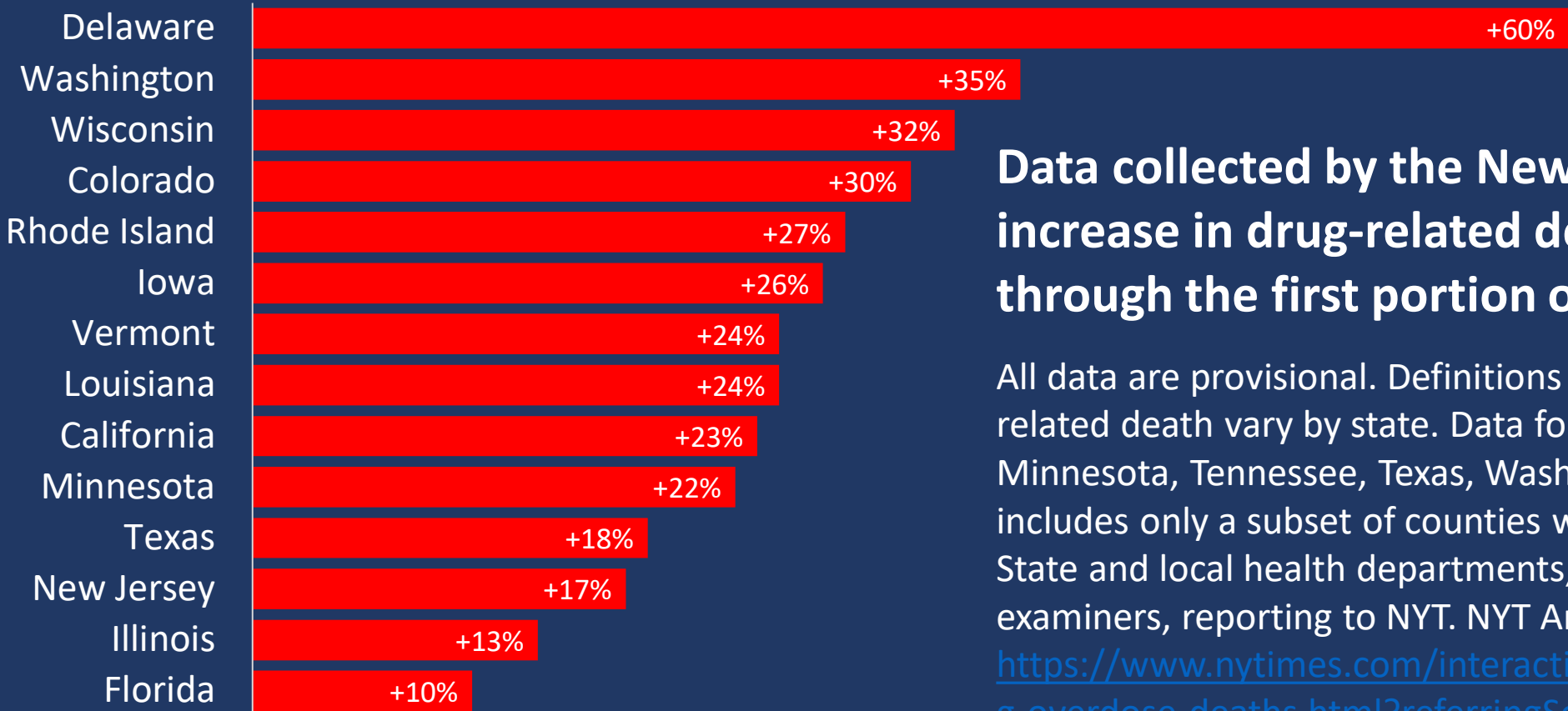


Note: Percent growth references the 1,201 agencies reporting to ODMAP by January

Source: **ODMAP**  
OVERDOSE DETECTION  
MAPPING APPLICATION PROGRAM

ALYSSA FOWERS/THE WASHINGTON POST

# Drug-Involved Deaths Continued to Rise in Early 2020 in States Across the Country

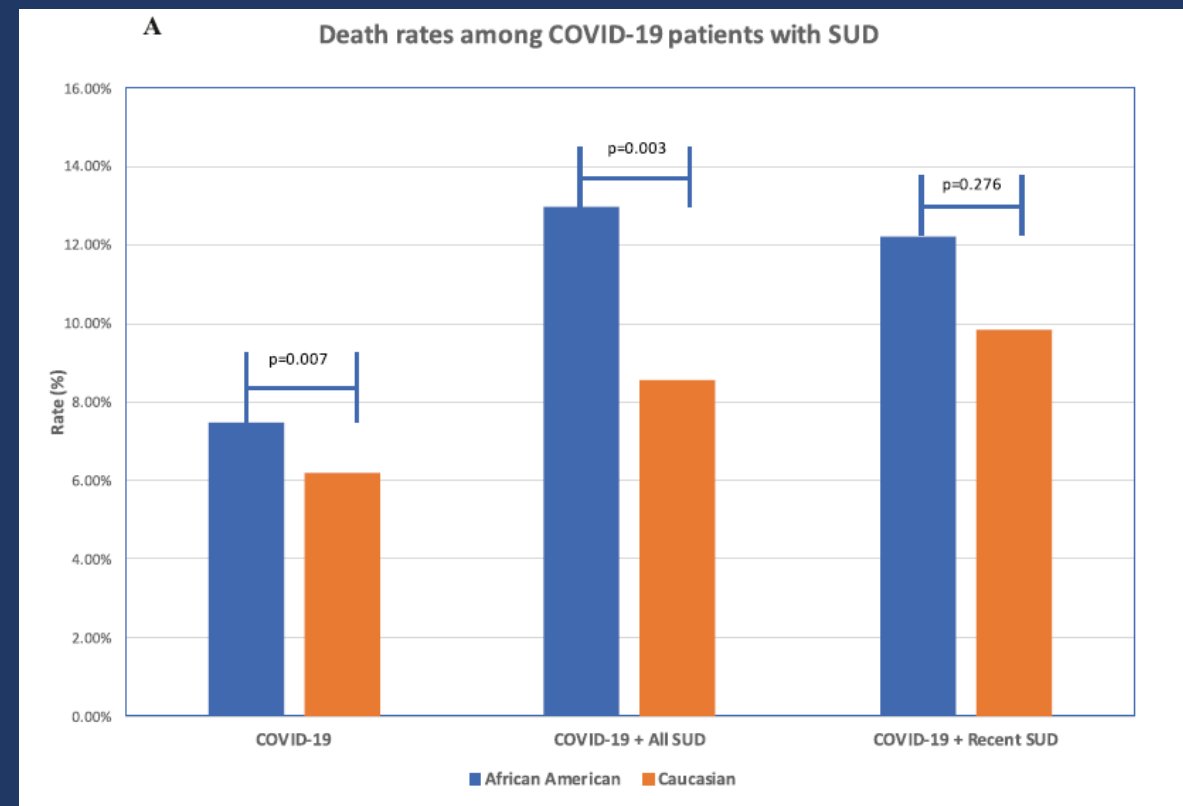
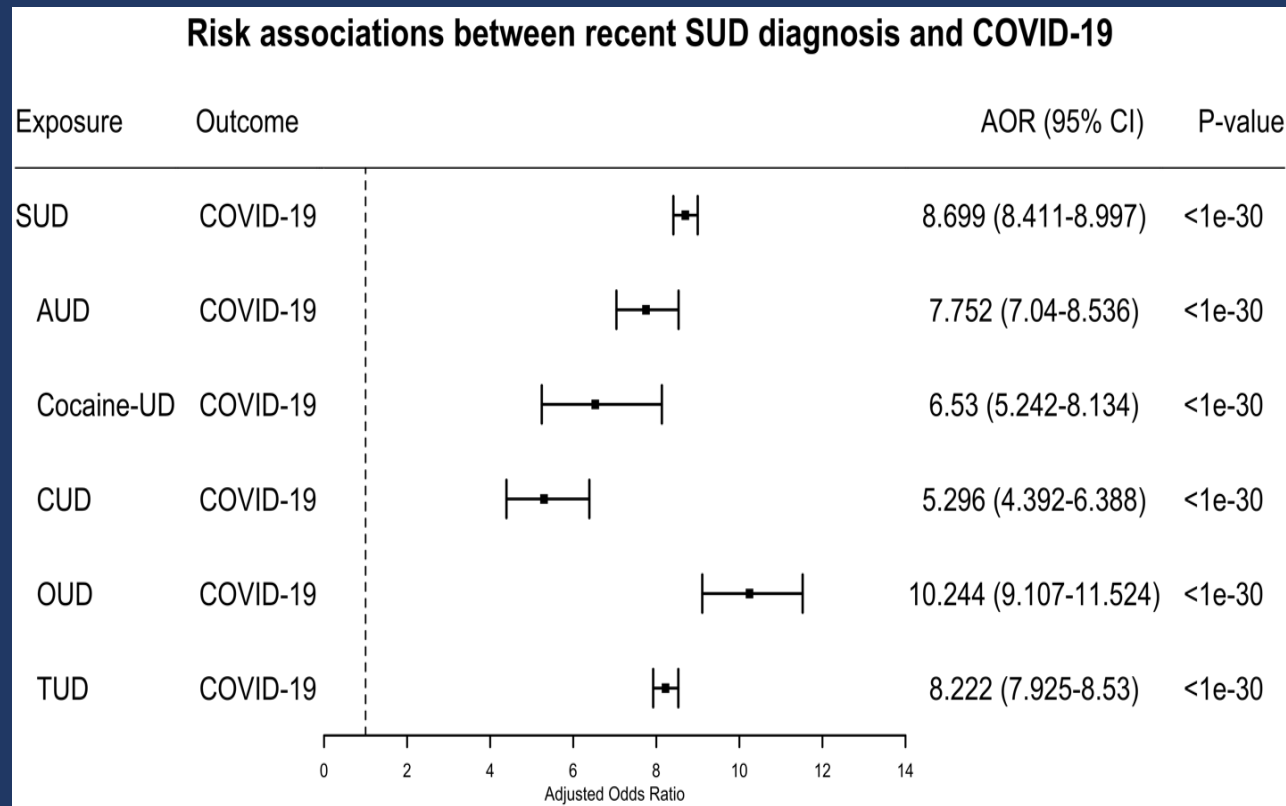


**Data collected by the New York Times indicate increase in drug-related deaths from 2019 through the first portion of 2020.**

All data are provisional. Definitions of what counts as a drug-related death vary by state. Data for Arizona, California, Florida, Minnesota, Tennessee, Texas, Washington and Wisconsin includes only a subset of counties within each state. Source: State and local health departments, coroners and medical examiners, reporting to NYT. NYT Article accessed at: <https://www.nytimes.com/interactive/2020/07/15/upshot/drug-overdose-deaths.html?referringSource=articleShare>

# COVID-19 risk and outcomes in patients with substance use disorders: analyses from electronic health records in the United States

[Quan Qiu Wang](#), [David C Kaelber](#), [Rong Xu](#), [Nora D Volkow](#)<sup>4</sup>



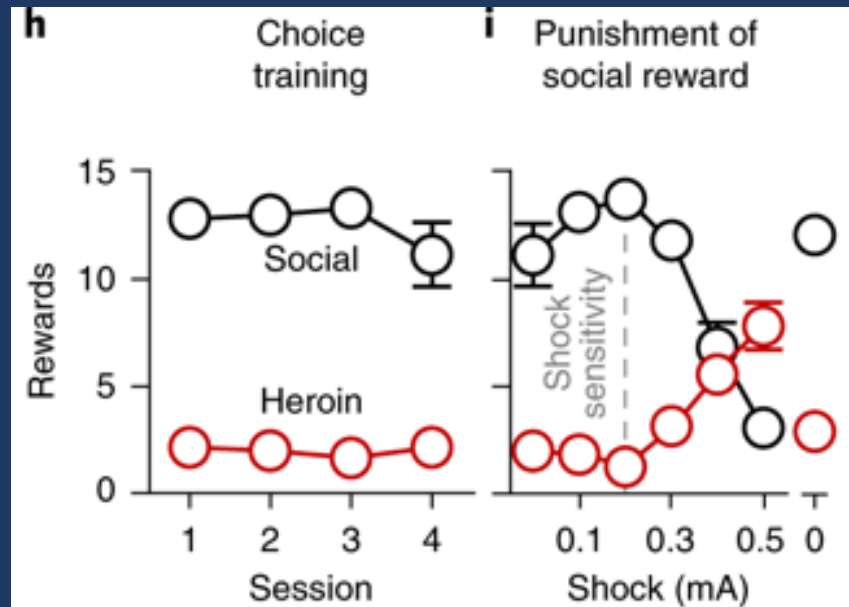
# Structural Challenges for SUD During COVID-19

- Stress
- **STIGMA**
- Access to medications for OUD
- Limited access to peer-support groups or other sources of social connection
- Social distancing increases likelihood of overdoses with no observer who can administer naloxone
- Homelessness
- Loss of jobs

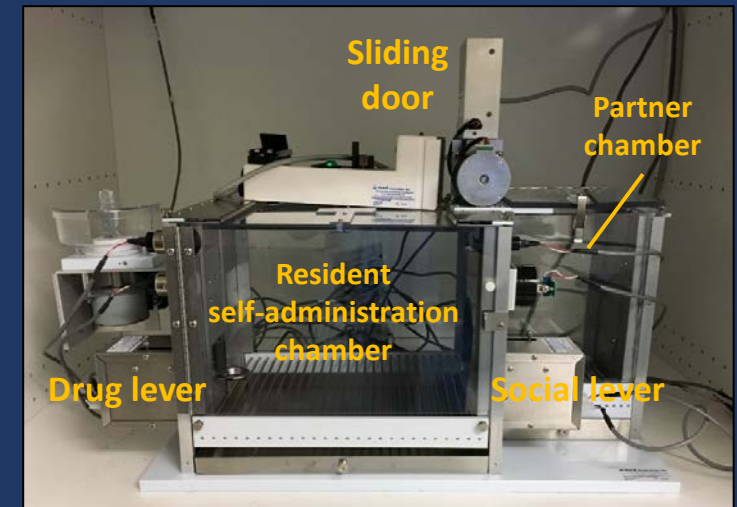
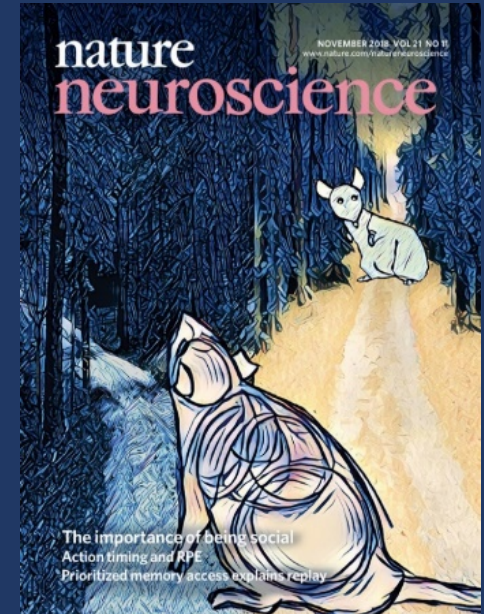


# Social Interaction Preferred Over Drug

Drug preference increases when social reward is punished



Venniro et al., Nature Neuroscience 2018



Venniro et al., 2018