



Engaging Students, Alumni, and Health Professionals to Support Local Public Health in Massachusetts

Neil Maniar PhD, MPH

Professor of Public Health Practice

A Call to Action



On March 20, 2020, the **Academic Health Department Consortium** of eight accredited schools and programs of public health in MA convened at request of Governor Baker, the COVID-19 Command Center, and the MA Department of Public Health.

The goal was to provide support to local health departments in their response to COVID-19.

The initial group expanded to include additional schools, the Massachusetts Public Health Association, and the Massachusetts Health Officers Association to form the **Academic Public Health Volunteer Corps (APHVC)**.

APHVC Partners

Boston University

Harvard T.H. Chan School of Public Health

Holyoke Community College

Massachusetts College of Pharmacy and Health Sciences University

Northeastern University

Northern Essex Community College

Regis College

Simmons College

Tufts University

UMass Amherst

UMass Medical School

UMass Lowell

MA Public Health Association

MA Health Officers Association

MA Department of Public Health

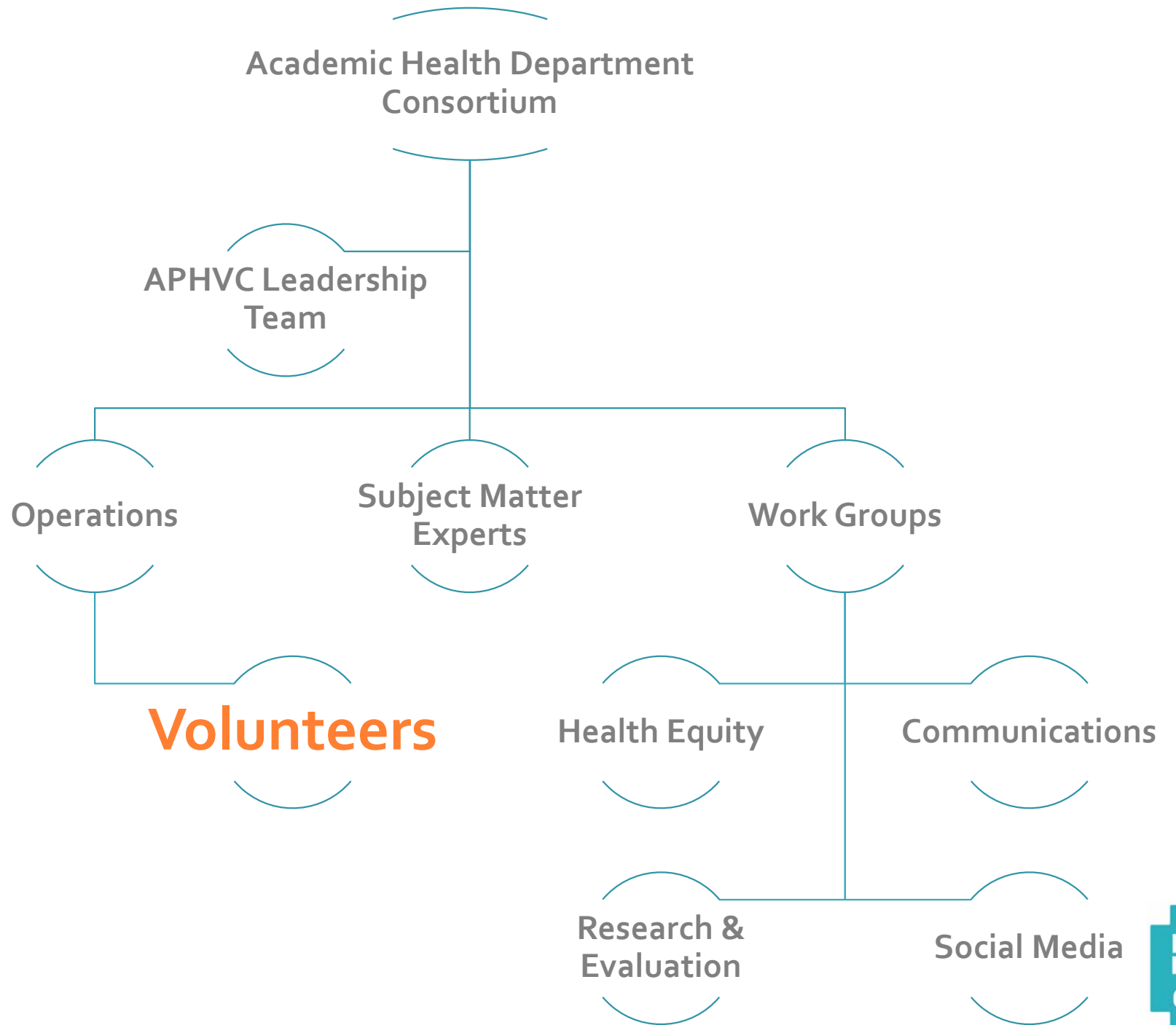
Mission

To support state and local public health agencies and to advance health equity in Massachusetts by engaging public health students, alumni and expert volunteers through interdisciplinary collaboration.

academicpublichealthvolunteercorps.org

mass.gov/info-details/academic-health-department-academic-public-health-volunteer-corps

Structure



Milestones

AHD Consortium Convenes

MARCH 20, 2020

Governor Baker's Command Center
requests LBOH assistance

LBOH Needs Assessment

MARCH 22, 2020

Survey to local boards of health

Academic Public Health Volunteer Corps

MARCH 23, 2020

Establishment of program

Call for Volunteers

MARCH 25, 2020

2,000 sign-ups in about 2 weeks

REDCap Contact Tracing

APRIL 3, 2020

Platform goes live

Wave 1 Contact Tracing

APRIL 6, 2020

APHVC kicks off contact tracing in
Norwood, MA

Wave 2 Contact Tracing (CTC)

APRIL 23, 2020

Community Tracing Collaborative
assumes contact tracing
responsibilities

Public Health Services

MAY 7, 2020

APHVC fully transitions to
non-contact tracing public health
services

Examples & Initial Impact

The logo is a teal-colored cross shape. Inside the cross, the words "ACADEMIC", "PUBLIC HEALTH", "VOLUNTEER", and "CORPS" are stacked vertically in white, sans-serif, uppercase letters. "ACADEMIC" is the smallest, "PUBLIC HEALTH" is the largest, "VOLUNTEER" is medium-sized, and "CORPS" is the same size as "PUBLIC HEALTH".

ACADEMIC
**PUBLIC
HEALTH**
VOLUNTEER
CORPS

Initial Impact

- Over 1,200 public health student and alumni volunteers deployed to 80 communities across Massachusetts
- Over 2,000 contact tracing calls made in April
- Over 600 wellness calls
- Volunteers assisted communities with development of 25 policy proposals
- Volunteers created dozens of infographics and GIS maps to support local public health education and surveillance needs
- Volunteers assisted communities in translation of materials and health messaging into many different languages including Spanish, Portuguese, Chinese, Armenian, Arabic, Urdu, Khmer, Vietnamese, Russian, Polish, and Korean

Health Equity

**DJA BO BAI ALGUM
LUGAR UNDI TXEU
ALGUEM STABA
DJUNTADO?**

Fazi testi di graca!

**Quarta fera, 17 di Junio
Quinta fera, 18 di Junio**

Tem mas ki 50 lugar pa fazi testi na Massachusetts

Mass.gov/GetTested

Lugar di fazi testi na Brockton:
Brockton High School
470 Forest Ave.

12-7 PM by Appointment Only | Call (844) 483-7819

Population

Haitian and Cabo Verdean

Location

Randolph and Brockton, MA

Challenges

Testing access and utilization

Social distancing compliance
including mask-wearing

Stigma around positive diagnoses

Methods

Community members and heritage
speakers

Key informant interviews

Products

Flyers, radio spots, social media

ÈSKE OU KONNEN?

Tant tès COVID-19 nan Brockton High ouvè
pou tout moun - lè plis moun ki fè tès la,
ekonomi rejyonal nou an pral relouvri pi vit.

Planifye pwòp tès ou lè ou rele: 1-844-483-
7819. Tès la y'ap bay nan machin ou se
gratis, vit epi fasil.



1. RELE POU ENSKRI:
RELE 1-844-4TEST19
POU ENSKRI



2. ANTRE NAN LIN
MACHIN NAN BHS:
ANTRE NAN FOREST
AVE. AK SWIV SIY YO



3. KONDWI ANTRE NAN
TANT LA: LÈ YO FÈ OU
SIY, KONDWI ANTRE
TANT LA DOUSMAN



4. FÈ TÈS LA: OUVRI
FENET LA AK SWIV
ENSTRIKSYON YO



5. SÒTI TANT LA: SWIV
ENSTRIKSYON YO POU
KITE BHS



6. TANN REZILTA: NOU
PRAL RELE OU NAN
KÈK JOU AK REZILTA A!

TEMPLATE BY @CANVA

Graphics by Samira Dias
MPH Candidate, UMass Amherst

Next steps

- Increasing focus on health equity
- Assisting with policy development related to reopening
- Broadening scope to engage additional local partners including Community Health Centers, non-profit partners, and local cultural organizations and coalitions
- Focusing on data analysis, epidemiology, and data translation needs at the local level
- Conducting interviews and survey about local board of health perceptions of the APHVC experience
- Establishing a development committee to secure funding for long-term sustainability



[@aphvc-team](#)



[APHVC](#)



[@aphvc](#)

Neil Maniar, PhD, MPH
Northeastern University
s.maniar@northeastern.edu