

## SPEAKERS



**BRIAN ANDERSON, MD** is the President and Chief Executive Officer of the Coalition for Health AI (CHAI) where he leads a national coalition in the development of technical standards and best practices for MLOps, including governance, testing, evaluation and monitoring in Health AI Assurance Labs. Prior to CHAI, Dr. Anderson was the Chief Digital Health Physician at MITRE

where he led research and development efforts across major strategic initiatives in Digital Health, including partnering with the United States Government and private sector organizations. He was responsible for leading MITRE's efforts in Advancing Clinical Trials at the Point of Care (ACT@POC), an effort that develops digital tools and approaches to support more diverse and efficient pragmatic clinical trials in Cancer and other diseases. He was also the co-PI on MITRE's largest Health R&D effort in Oncology, supporting Cancer Moonshot efforts. Dr. Anderson is an internationally recognized expert and author in digital health and Health AI; he is regularly engaged as a speaker on digital health innovation, Health AI assurance and best practices, health standards development, clinical decision support systems, and interoperability. Prior to MITRE, Dr. Anderson led the Informatics and Network Medicine Division at Athenahealth where he launched a new approach to clinical decision support leveraging machine learning models. He has also served on several national health information technology committees in partnership with the Office of the National Coordinator (ONC). Dr. Anderson trained at Massachusetts General Hospital and also practiced at Greater Lawrence Family Health Center. He received his MD with honors from Harvard Medical School, and a BA in Social Anthropology, cum laude from Harvard College. Currently he lives in the greater Boston area, with his wife and 3 children.



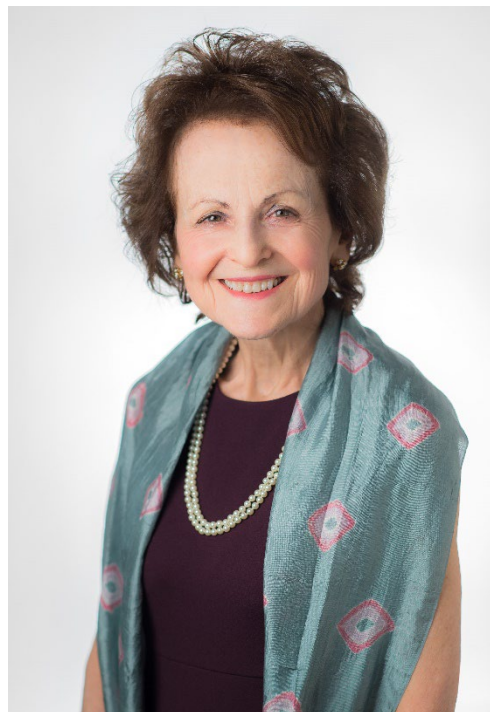
**REBECCA ANDREWS, MD** studied biology at Boston College and medicine at the University of Connecticut, where she also completed her residency. She is a Professor of Medicine and medical educator at the University of Connecticut with a three-pronged position: Director of Primary Care, practicing internal medicine primary care physician, and Director of Ambulatory Education/Associate Program Director for the Categorical Internal Medicine Residency Program. Dr. Andrews also serves as UConn Health's clinical lead for the Connecticut Comprehensive Pain Center and Patient-Centered Medical Home. She has had a national impact through her leadership roles (past Chair of the Board of Governors and current Regent) with the American College of Physicians. She is the Chair-elect for the Board of Regents in the American College of

Physicians, she is actively involved in advocacy for the medical profession and patient care. Dr. Andrews' areas of expertise include performance measures, high-quality primary care, effective communication skills, management of chronic pain, and safe opioid prescribing. She has a long-standing interest in medical education, continually refining her methods to identify resident trainees who need urgent early intervention. She develops innovative curricula paired with clinical experiences for enhanced adult learning.



**DONALD BERWICK, MD, MPP, FRCP, KBE**, is one of the leading scholars, teachers, and advocates in the world for the continual improvement of health care systems. He is a pediatrician, and a longstanding member of the faculty of Harvard Medical School. He founded and led the Institute for Healthcare Improvement, now the leading global nonprofit organization in its field. He was appointed by President Obama as administrator of the Centers for Medicare and Medicaid Services, where he served in 2010 and 2011. He has counseled governments, clinical leaders, and executives in dozens of nations. He is an elected Member of the National Academy of Medicine and the American Philosophical Society. He has received numerous awards, including the Heinz Award for Public Policy, the Award of Honor of the American Hospital Association, and the Gustav Leinhardt Award from the Institute of Medicine. For his work with the British National Health Service, in 2005 Her Majesty Queen Elizabeth II appointed him Honourary Knight Commander of the British Empire, the

highest honor awarded by the UK to a non-British subject.



**CLAIRE D. BRINDIS**, DrPH, MPH, is a Distinguished Professor of Pediatrics and Health Policy, Department of Pediatrics and Department of Obstetrics, Gynecology and Reproductive Health Sciences and Emerita Director of the Philip R. Lee Institute for Health Policy Studies at the University of California, San Francisco (UCSF). Dr. Brindis is also the Co-Director of the Adolescent and Young Adult Health National Resource Center (<http://nahic.ucsf.edu>) and a Founding Director of the Bixby Center for Global Reproductive Health. Incorporating a variety of quantitative and qualitative methodologies, as well as community participatory research, Dr. Brindis' research focuses on program evaluation and the translation of research into policy at the local, state, and national level. As a bilingual, bi-cultural researcher, Dr. Brindis' research, and personal commitment focus on ameliorating the impact of social, health, and economic disparities among ethnic/racial populations, with a focus on women, young adults, and adolescents and reproductive health. She brings expertise in the translation of research findings into policy and its dissemination to a wider variety of stakeholders, using both academic and non-

academic channels, including films, briefs, webinars, training curriculum and materials. She serves as the lead evaluator for the UCSF Clinical and Translation Sciences Institute and is Senior Advisor to the UC-wide Center on Climate, Health and Equity. An Elected Member of the National Academy of Medicine, she served as a member (2018-2021) and the Vice-Chair (2021-2024) of its Council. She concurrently Chairs the Standing Committee on Reproductive Health, Equity, and Society for the National Academy of Science, Engineering and Medicine (NASEM) and serves as the Chair of the Division of Social and Behavioral Sciences and Education (DBASSE) for the National Research Council/NASEM.



**JOHANNA BUTLER**, MPP, provides strategic management of the Provider Payment Incentives portfolio for Arnold Ventures. Her work includes identifying and developing investment opportunities to shift the way we pay for health care to better align reimbursement structures with patient outcomes, value, and total costs of care. She supports Arnold Ventures' current grantees and strategic partners with a shared focus on payment reform. Prior to joining Arnold Ventures, Johanna worked as a policy associate at the National Academy for State Health Policy (NASHP), a nonpartisan non-profit organization that works with and for state officials to develop and sustain innovative solutions to health policy challenges. She provided policy analysis and technical assistance as part of NASHP's Center for Health System Costs and the Center for Prescription Drug Pricing. Prior to her work at NASHP, Johanna



completed internships with the Senate Committee on Health, Education, Labor and Pensions (HELP) and with the White House Office of Cabinet Affairs. Johanna received her master's in public policy from the University of Chicago Harris School of Public Policy with a certificate in health administration and policy. Johanna completed her bachelor's degree in interdisciplinary studies with a focus on communications, law, economics, and government at American University.



**DIANA CAMACHO, MPH** is a senior program officer for CHCF's Improving Access team, which works to improve access to coverage and care for Californians with low incomes. Diana leads work at CHCF focused on primary care, Latino/x health equity, and telehealth. Prior to CHCF, Diana worked at Kaiser Permanente, where she led Medicaid care delivery collaborations and national community benefit grantmaking within the health care safety net. Additionally, Diana has health care and public health experience in the in areas of public policy, language access, community needs assessment, and diversity, equity, and inclusion. Diana started her public health

career supporting the needs of people living with HIV/AIDS as a case manager and health educator. Diana earned a bachelor's degree in psychology from the University of California, Santa Barbara, and a master's degree in public health from the University of California, Berkeley.



**KATINA CARTER, BS**, is a published author and Peer Support Specialist with a bachelor's degree in healthcare management. She has been an active member of the PCORI group for four years, collaborating on research ethics training. Before joining Seven Counties Services, she earned her Peer Support Specialist certification at My Chosen People, which strengthened her ability to advocate for individuals living with severe mental illness (SMI). Additionally, she spent several years organizing and advocating for health awareness and social change before transitioning to Seven Counties Services in 2018. During her time at Seven Counties Services, she developed a deep passion for serving individuals in the community who face barriers such as housing instability, food insecurity, and limited healthcare access due to the challenges associated

with their SMI diagnosis. She is currently pursuing a master's degree in social work, with a continued focus on advocacy. Her goal is to bridge the gap between policymakers and the communities she serves, ensuring equitable access to essential resources and support.



**MARET FELZIEN, MA**, is a native to rural northeastern Colorado and recently retired from a long career supporting underserved and underprepared students at the local 2-year college. Currently, she assists with the daily operations of the family dry-land farm and cattle ranch. She became involved with community engagement and primary care practice- and community-based research 20 years ago working with High Plains Research Network (HPRN) and its Community Advisory Council. This group informs, advises, and co-creates health research to strengthen primary care across rural eastern Colorado. The research conducted in these rural communities has been fun, meaningful, and successful, and most importantly, has shown positive impact on the health of the communities. Her community engagement work and advocacy has grown from this experience to include work at the state and national level. Additionally, she frequently collaborates on research teams and with projects as a patient/community voice or leader, an advocate, and even sometimes as a co-investigator in research and primary care advocacy.



**ARVIN GARG, MD, MPH** is Tenured Professor of Pediatrics and Vice Chair of Health Equity at University of Massachusetts (UMass) Chan Medical School and UMass Memorial Children's Medical Center. Dr. Garg is also the Associate Chief Quality Officer for Health Equity for the UMass Memorial Health System. Dr. Garg is also the Founding Director of the Child Health Equity Center at UMass Chan and UMass Memorial Children's Medical Center. Dr. Garg is the Program Director of the Child Health Equity (PATH) Fellowship. Dr. Garg received his B.A. in Behavioral Biology from Johns Hopkins University, M.P.H from Boston University School of Public Health and his medical doctorate from Boston University School of Medicine. After completing his clinical residency in pediatrics at the University of Connecticut, he worked for two years in private practice in Pennsylvania. He subsequently completed a

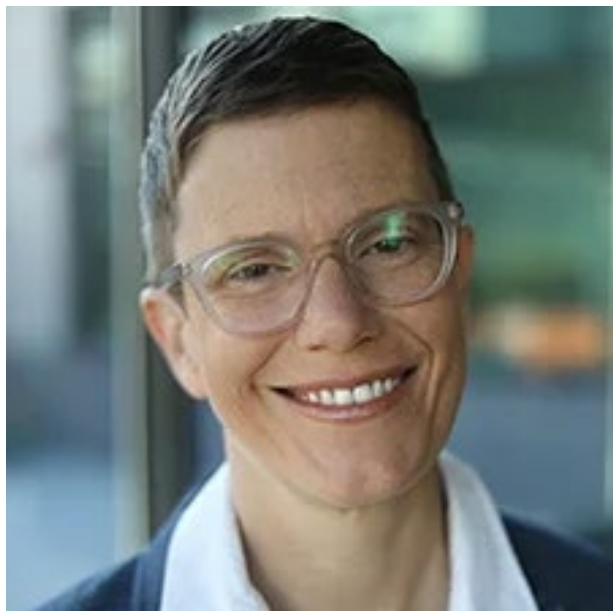
post-doctoral General Academic Pediatric fellowship at Johns Hopkins University School of Medicine. Dr. Garg first faculty position was at Floating Hospital for Children at Tufts Medical Center, and prior to joining UMass, Dr. Garg was at Boston Medical Center and Boston University School of Medicine for ten years where he also served as Assistant Dean for Student Affairs for five years. Dr. Garg has been recognized for his clinical teaching and mentorship with awards from Tufts University School of Medicine, Boston University School of Medicine, the Boston Combined Residency Program and the Massachusetts Chapter of the American Academy of Pediatrics. Dr. Garg's research focuses on advancing child health equity by addressing adverse social drivers of health (SDoH) within the delivery of pediatric care, particularly for low-income families, and has been cited in professional guidelines. Since 2009, Dr. Garg has been continuously funded by the NIH and has also received extramural funding from private foundations. He has published over 125 publications. He has also served on various other committees focused on social determinants and community health, both locally and nationally and is President-Elect of the Academic Pediatric Association.



**GAIL GUERRERO-TUCKER, MD, MPH,** FAAFP practices in Safford, Arizona, at a full-spectrum private practice Rural Health Center. This center provides pediatric, obstetric, and geriatric care, as well as behavioral health services to a rural population of approximately 40,000 people. The center is affiliated with Mt. Graham Regional Medical Center, a critical access hospital in Safford, where she holds privileges in Obstetrics, Pediatrics, and Medicine. In 2019, Dr. Guerrero-Tucker helped the Arizona Academy of Family Physicians (AzAFP) plan its first-ever Health Equity Conference. She also served as the AzAFP President from 2019 to 2020. Dr. Guerrero-Tucker is board-certified by the American Board of Family Medicine and holds

the AAFP Degree of Fellow, an earned distinction awarded to family physicians for distinguished service and continuing medical education. She has received multiple teaching awards from students and residents at the University of Arizona.





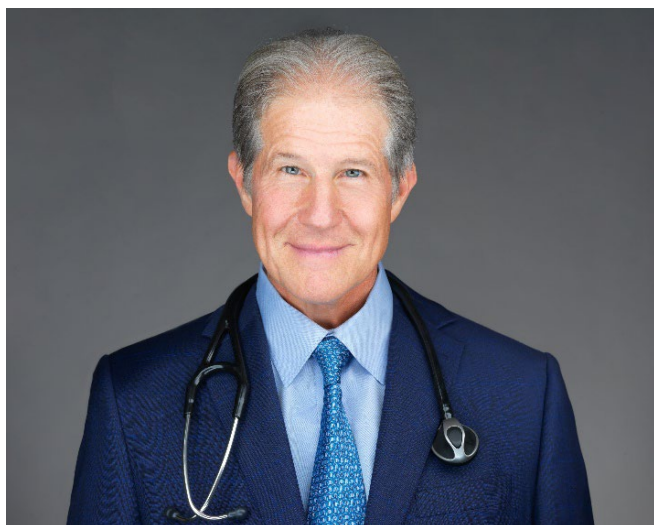
**CARLINA HANSEN, MHA** is a senior program officer for CHCF's Improving Access team, which works to improve access to coverage and care for Californians with low incomes. Before joining the team at CHCF, Carlina worked at the Women's Community Clinic in San Francisco, where she served as the executive director for 17 years. She holds a Master of Science in health care administration from the University of California, San Francisco, where she now serves on the faculty.



**AVITAL HAVUSHA, MPH**, is the Vice President of Programs at the New York Health Foundation (NYHealth). Avital oversees and develops the Foundation's programs and priority areas, Healthy Food, Healthy Lives and Primary Care, as well as its Special Projects Fund and focus on Veterans' Health. She plays a leadership role in developing and implementing the Foundation's goals and strategies and in ensuring quality and accountability of its grantmaking. She promotes synergy across all of the Foundation's grantmaking, contributes to the Foundation's proactive policy agenda, and builds partnerships with other foundations and stakeholders. Prior to joining NYHealth, Avital held a number of leadership roles in the public health and health care sectors in New York State. At the Primary Care Development Corporation (PCDC), she oversaw operations, strategy,

project execution, and business development for PCDC's capacity-building and technical assistance programs, supporting primary care practices to provide patient-centered and coordinated care. At Public Health Solutions, she oversaw and managed large-scale health and human service programs in the areas of food and nutrition, reproductive health care, maternal and child health, and health care access. Earlier, at the New York City Department of Health and Mental Hygiene, she played a lead role in coordinating the department's response to federal

and State health care reform and was a member of the leadership team that developed the Take Care New York policy agenda. She has also held roles at Yale University's School of Public Health and at an anti-hunger organization in Massachusetts. Avital holds a Bachelor of Arts degree from Washington University in St. Louis and a Master of Public Health degree from Yale University, with a concentration in health policy and administration.



**WAYNE JONAS, MD**, is a board-certified, practicing family physician, an expert in integrative health and whole person care delivery, and a widely published scientific investigator. Additionally, Dr. Jonas is a retired Lieutenant Colonel in the Medical Corps of the United States Army. From 2001-2016, he was President and Chief Executive Officer of Samueli Institute, a non-profit medical research organization supporting the scientific investigation of healing processes in the areas of stress, pain and resilience. Dr. Jonas wrote the

best-selling book [\*How Healing Works\*](#), laying out a revolutionary new way to approach injury, illness, and wellness. He also co-authored a second book with Alyssa McManamon, MD, [\*Healing and Cancer: A Guide to Whole Person Cancer Care\*](#). This book is meant to be actively used by teams caring for people with cancer and by caregivers and patients to enhance healing, health, and wellbeing. Dr. Jonas was the Director of the Office of Alternative Medicine at the National Institutes of Health from 1995-1999, and prior to that served as the Director of the Medical Research Fellowship at the Walter Reed Army Institute of Research. He is a Fellow of the American Academy of Family Physicians. His research has appeared in peer-reviewed journals such as the Journal of the American Medical Association, Nature Medicine, the Journal of Family Practice, the Annals of Internal Medicine, and The Lancet. Dr. Jonas received the 2015 Pioneer Award from the Integrative Healthcare Symposium, the 2007 America's Top Family Doctors Award, the 2003 Pioneer Award from the American Holistic Medical Association, the 2002 Physician Recognition Award of the American Medical Association, and the 2002 Meritorious Activity Prize from the International Society of Life Information Science in Chiba, Japan. Dr. Jonas has led and participated in hundreds of research studies beginning with his time as Director of the National Institutes of Health Office of Alternative Medicine. While serving as CEO and President of the non-profit research organization Samueli Institute, his work set the bar for evidence-based research in the areas of pain, stress and human performance. Dr. Jonas currently serves as the President of Healing Works Foundation, a not for profit organization dedicated to the integration of healing and curing in routine health care delivery.





**CHRISTOPHER F. KOLLER, MPPM, MAR**, is president of the Milbank Memorial Fund, a 117-year operating foundation that improves population health by connecting leaders with the best information and experience. Before joining the Fund, he served the State of Rhode Island as the country's first health insurance commissioner, an appointment he held between 2005 and 2013. Under Mr. Koller's leadership, the Rhode Island Office of the Health Insurance Commissioner was nationally recognized for its rate review process and its efforts to use insurance regulation to promote payment reform, primary care revitalization, and delivery system transformation. The office was also one of the lead agencies in implementing the

Affordable Care Act in Rhode Island. Prior to serving as health insurance commissioner, Mr. Koller was the CEO of Neighborhood Health Plan of Rhode Island for nine years. In this role, he was the founding chair of the Association of Community Affiliated Plans. Mr. Koller has a bachelor's degree (summa cum laude) from Dartmouth College and master's degrees in social ethics and public/private management from Yale University. He is a member of the National Academy of Medicine. He has also served in numerous national and state health policy advisory capacities and was the recipient of the Primary Care Collaborative's Starfield Award in 2019. Mr. Koller is a professor of the practice in the department of health services, policy and practice in the School of Public Health at Brown University.



**CORINNE LEWIS, MSW**, currently serves as the assistant vice president, in the Commonwealth Fund's Health Care Delivery System Reform program. Prior to this role, she served as the senior research associate for the program, during which time she conducted research and authored publications on a variety of topics including the impact of the payment and delivery system reforms of the Affordable Care Act, the value of primary health care, and innovative models to address the drivers of health for patients. Before joining the Fund, Lewis was an analyst with Mathematica, where she assisted with the evaluation of federal and state value-based payment initiatives, and held an internship at the Center

for Medicare and Medicaid Services' New York regional office. She also has frontline experience in the health care system, having served as a social worker at a subacute rehabilitation facility and nursing home, NYU Lutheran Augustana Center. Lewis holds a B.A. in psychology from Boston University and an M.S.W. in social policy from Columbia University's School of Social Work.



**R. SHAWN MARTIN, MHCDS**, serves as executive vice president and chief executive officer for the American Academy of Family Physicians. The AAFP is the medical specialty organization representing 130,000 family physicians and medical students nationwide. Martin works with the AAFP Board of Directors on the mission, strategy and vision for the AAFP and provides representation to other organizations, including medical, public, and private sectors. Prior to joining the AAFP senior management team, Martin served as director of government relations and health policy and director of socioeconomic affairs at the

American Osteopathic Association. He began his career at AOA as the assistant director of congressional affairs from 1999 to 2000, when he was promoted to deputy director of government relations and director of congressional affairs. In 2006, he was named director of government relations and health policy and, in 2011, he also became director of socioeconomic affairs at the AOA. Martin has served on the National Quality Assurance Coalition Patient Centered Medical Home Advisory Board, the Agency for Healthcare Research and Quality Practice Transformation Advisory Board, the Hospital and Facilities Accreditation Program Patient-Centered Medical Home Advisory Panel. He serves in leadership roles of several coalitions in Washington, including a six-year period as chair of the Health Coalition on Liability and Access. He also is an active member of the Patient Centered Primary Care Collaborative, where he has served in several official leadership roles since its inception in 2006. In 2010, Martin received the Ryland Medal for Health Policy from the New York Institute of Technology, and in 2009, he received the Oklahoma Osteopathic Association President's Citation. He was named by The Hill as one of the top 10 health care lobbyists in Washington, DC. A native of Oklahoma, Martin earned his Bachelor of Science degree in business administration and marketing from Phillips University and a Masters of Health Care Delivery Science from Dartmouth College.



**GERARDO MORENO, MD, MS** is Professor and Chair of the Department of Family Medicine and the Kaiser Permanente Endowed Professor of Community Medicine at UCLA. He is the immediate past Board Chair of the American Board of Family Medicine (ABFM). Dr. Moreno maintains a primary care continuity clinic and is actively involved in training family medicine residents and medical students. He is a member of the National Academy of Medicine (NAM). His training includes a postdoctoral fellowship in the Robert Wood Johnson Foundation Clinical Scholars Program, and a NAM Fellowship. He is a past National Institute on Aging Paul B. Beeson Scholar and a former associate editor of the *Annals of Family Medicine*. Dr. Moreno has contributed to clinical guidelines

on diabetes in older adults. His current research focuses on effective primary care models in community health centers. His broader expertise includes diabetes management in older adults, evaluation of health system and community-level interventions, primary care physician workforce development, and medical education.



**PATRICIA A. SHARPNACK, DNP, RN, CNE, NEA-BC, ANEF, FAAN**, is Chair of the National League for Nursing Board of Governors and Dean and Strawbridge Professor at Ursuline College, Breen School of Nursing and Health Professions. She has held numerous leadership and board positions on regulatory bodies, as a Chief Nursing Officer for healthcare agencies, and as a leader in professional organizations at regional, national, and international levels. She was appointed to the Ohio Board of Nursing and was president for three terms, supervisory member, nursing education chair, and NCSBN delegate and committee member from 2014 through 2022. She is on the editorial board and reviewer for several refereed journals and has extensively published and presented at national and international conferences. She is also a member of the International Council of Nurses Expert Educator Advisory Committee. Dr. Sharpnack is a Fellow of the NLN Academy of Nurse Educators and the American Academy of Nursing.





**ROBIN SMITH, DO**, is Medical Director and Co-Owner at Westminster Medical Clinic, a family medicine practice in suburban Colorado. Her role includes practicing nearly 30 years of Family Medicine, strategic direction, and clinical implementation and advising. Robin's main motto in practice is: take care in the care. This is the priority of Family Medicine, and to build a framework from there. To do this, current initiatives at Westminster Medical Clinic include finding what matters most and individualizing care to the person

through a journey of care planning steps and conversations, integrating care more alongside a full Team of disciplines including a Clinical Pharmacist, and connecting with and through our own internal staff and community to heal together, such as focusing on occupational wellbeing and partnering with Jefferson County School District. Robin has also served on numerous Boards. She completed her residency locally at Presbyterian St. Luke's, medical school in Pomona, CA, and undergraduate schooling in environmental studies at the University of Colorado, Boulder. Robin spends her time living on a farm with goats, alpacas, and more! She is a Denver, Colorado-native and plans on never leaving as she continues to take care of 3rd generations of families and neighborhoods of patients.