



OPRE Research and Evaluation with Indigenous Communities

Aleta Lynn Meyer, Ph. D., Lead for Prevention and Resilience
May 23, 2024



From forthcoming report

Understanding Planning for Tribal Home Visiting Implementation: A Report From the Multi-Site Implementation Evaluation of Tribal Home Visiting (MUSE)

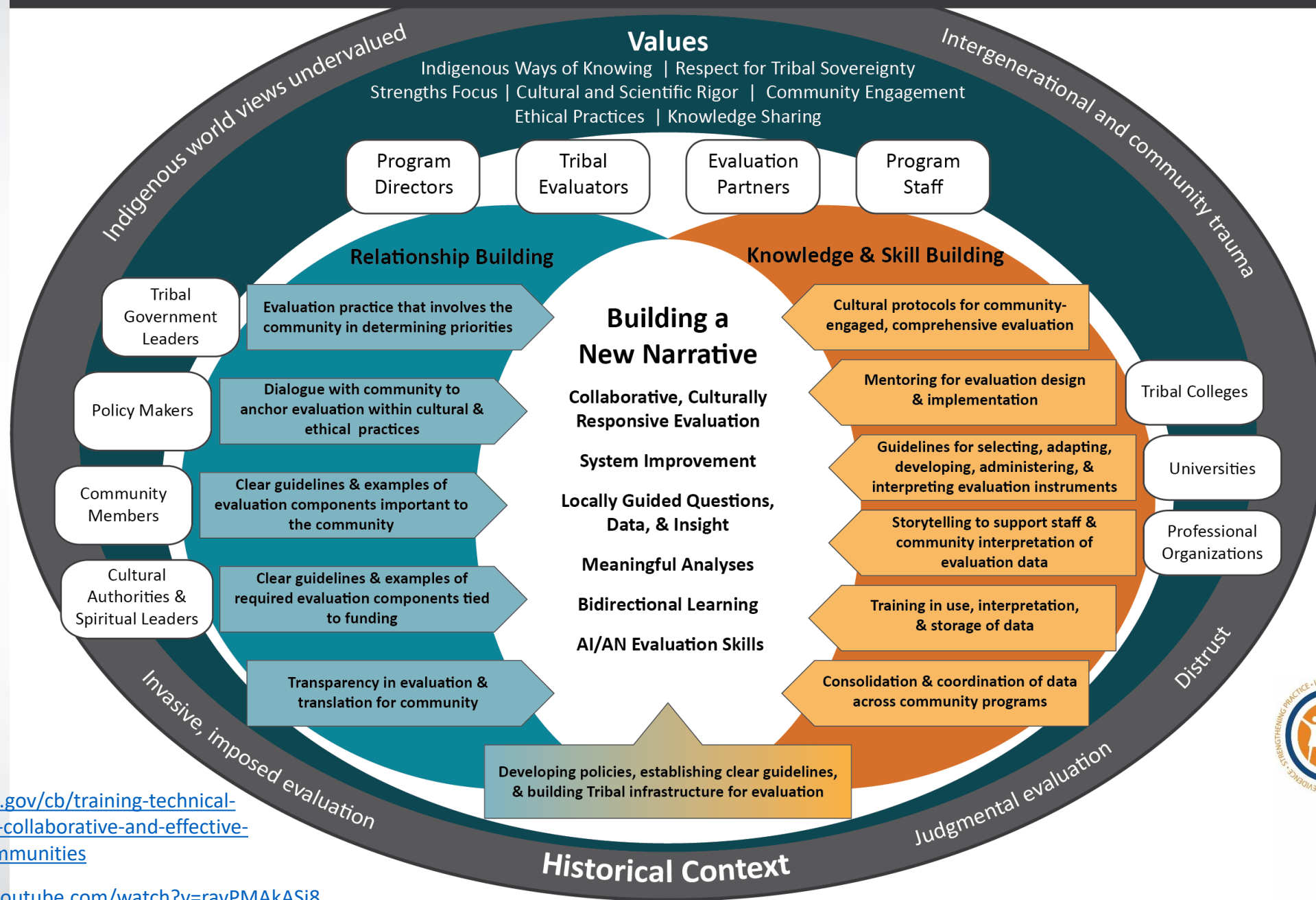
A Note on Terminology

This report uses “Indigenous” and “Native” interchangeably to refer to peoples whose connections to place, modes of governance, and knowledge predate the colonialization of what is now the United States. This report also uses “Tribal” at times to remain consistent with federal guidance and program language used to describe Tribal Maternal, Infant, and Early Childhood Home Visiting (Tribal MIECHV). We use these terms to describe diverse peoples and populations collectively, primarily to protect the anonymity of project partners. We acknowledge that these terms are rooted in settler colonial language and may not be preferred across partner communities. If it were not for our concerns for partner privacy and data confidentiality, we would use specific nation, community, or band names as well as other names people use themselves.

Until 2003, very few OPRE projects focused on Native communities

- While OPRE staff noticed this gap and some were aware of community-based participatory approaches, they were unsure how to proceed in the federal context
- OPRE staff were also aware of the limitations of standard measures and of standard approaches to experimental designs for tribal communities
- To learn, OPRE awarded a contract to listen and synthesize
- Based on what they learned, in 2005 OPRE awarded a cooperative agreement for the American Indian and Alaska Native Head Start Research Center
- In 2011, the Children's Bureau convened a group to listen and synthesize more

CO-CREATING COLLABORATIVE & EFFECTIVE EVALUATION TO IMPROVE TRIBAL CHILD WELFARE PROGRAMS

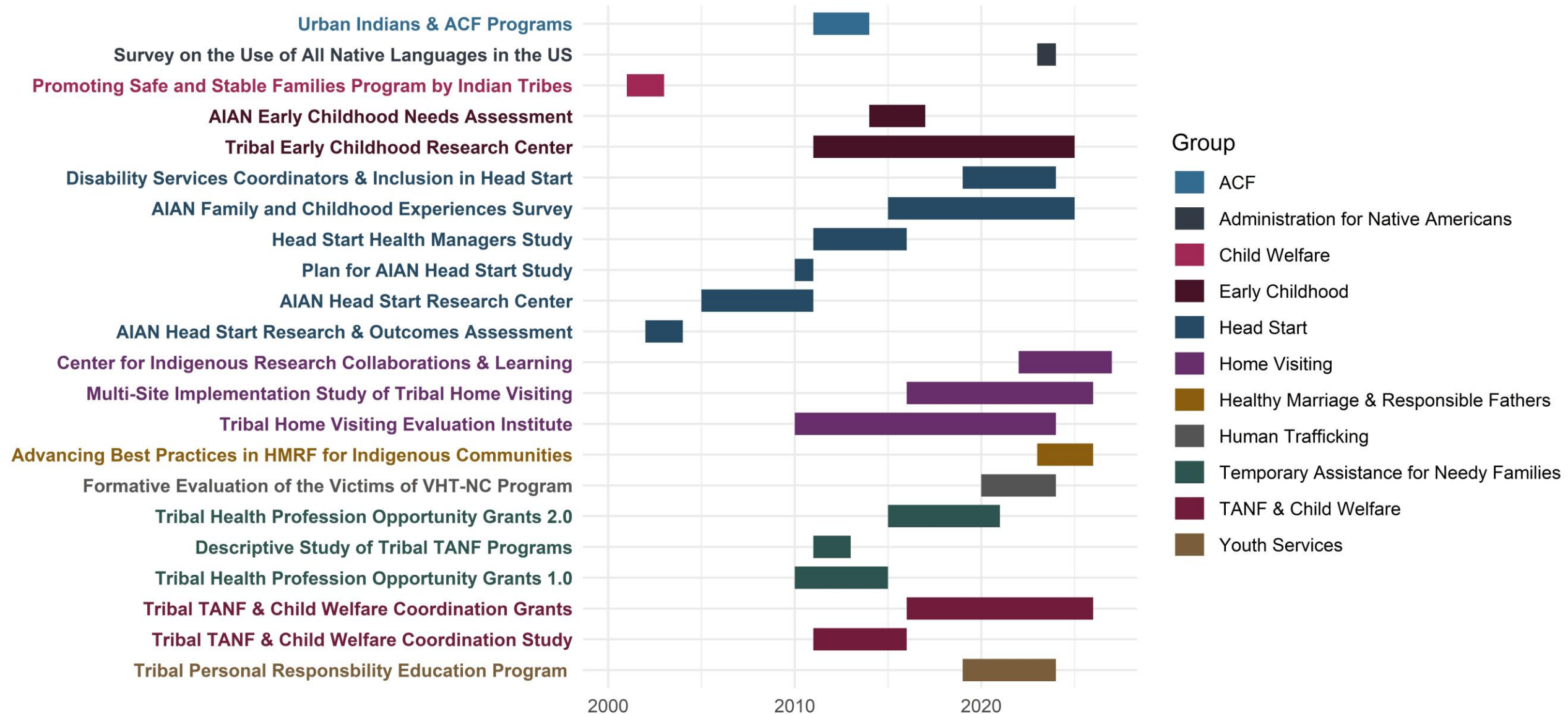


<https://www.acf.hhs.gov/cb/training-technical-assistance/roadmap-collaborative-and-effective-evaluation-tribal-communities>

<https://www.youtube.com/watch?v=ravPMaKASi8>

Call to Action: Building a New Narrative

ACF's Portfolio of Research with Native Communities





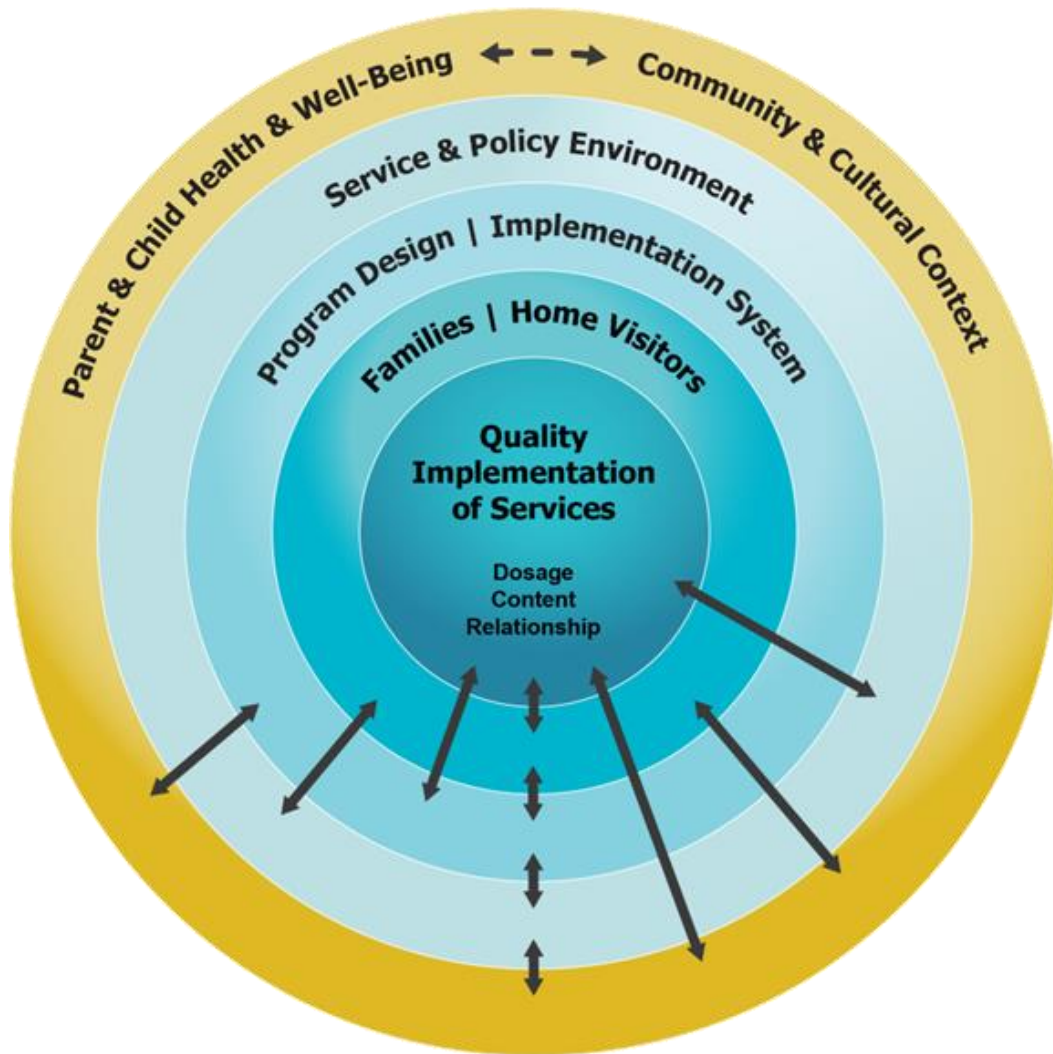
Tribal Home Visiting



NEW NARRATIVE:

Evaluation that promotes system improvement by providing information about how to better serve our children and families.

The Multi-Site Implementation Evaluation of Tribal Home Visiting (MUSE)



- MUSE is a **mixed-methods study** integrating quantitative and qualitative methodologies to examine how Tribal MIECHV programs operate in diverse contexts.
- Through a **community-engaged approach**, MUSE partnered with Tribal MIECHV programs to design and carry out a study that will return meaningful findings to partnering communities and the Administration for Children and Families (ACF).
- This first study focuses on the results of a rigorous analysis of 17 Tribal MIECHV program implementation plans (2016-2017) as a **secondary data source**

**The MUSE team
conducted
qualitative
analysis of Tribal
MIECHV
implementation
plans (2016-2017)
as secondary data**

Which sections of the Implementation Plan?

- Needs and Readiness Assessment, Home Visiting Program Vision, Goals and Objectives and Home Visiting Program Design
- Action Plan for Effective Implementation of Home Visiting Program
- Plan for Data Collection and Management, Continuous Quality Improvement, and Performance Measurement

EXCLUDED: Plan for Rigorous Evaluation of Home Visiting Program; Program Logic Models; Plan for Reporting Required Demographics, Service Utilization, Implementation, and Performance Measurement Data



REPORT | March 2024

Understanding Planning for Tribal Home Visiting Implementation

A Report From the Multi-Site Implementation
Evaluation of Tribal Home Visiting

OPRE Report 2024-030



General Findings

- Tribal MIECHV programs planned to use equity-focused Indigenous practices to support child and community well-being through home visiting.
- Programs built on implementation plan guidance and model guidance to plan their home visiting programs.
- Additional and augmented implementation approaches and concepts may be required to adequately support evidence-based program implementation in Native communities.

<https://www.acf.hhs.gov/opre/report/understanding-planning-tribal-home-visiting-implementation-report-multi-site>

NEW NARRATIVE:

***Measurement and analysis
that are rigorous,
relevant, and meaningful for
children and families in tribal
communities.***

Experiential Approach for Meaningful Measurement



**Early
Relational
Wellbeing**



**Family
Economic
Wellbeing**



**Native
Culture &
Language**



**Workforce
Needs
Assessment**

Communities of Learning

NEW NARRATIVE:

Growing Our Own – Building an American Indian and Alaska Native evaluation workforce that understands tribal cultural contexts and is committed to scientific principles.



Summer Institute

- The TRC's Early Childhood Research with Tribal Communities graduate course is offered biennially in collaboration Johns Hopkins Bloomberg School of Public Health's Center for Indigenous Health
- 30-40 students from tribal communities and programs across the country attend each session
- A subset of attendees receive competitive TRC Scholarships and receive mentoring and networking support



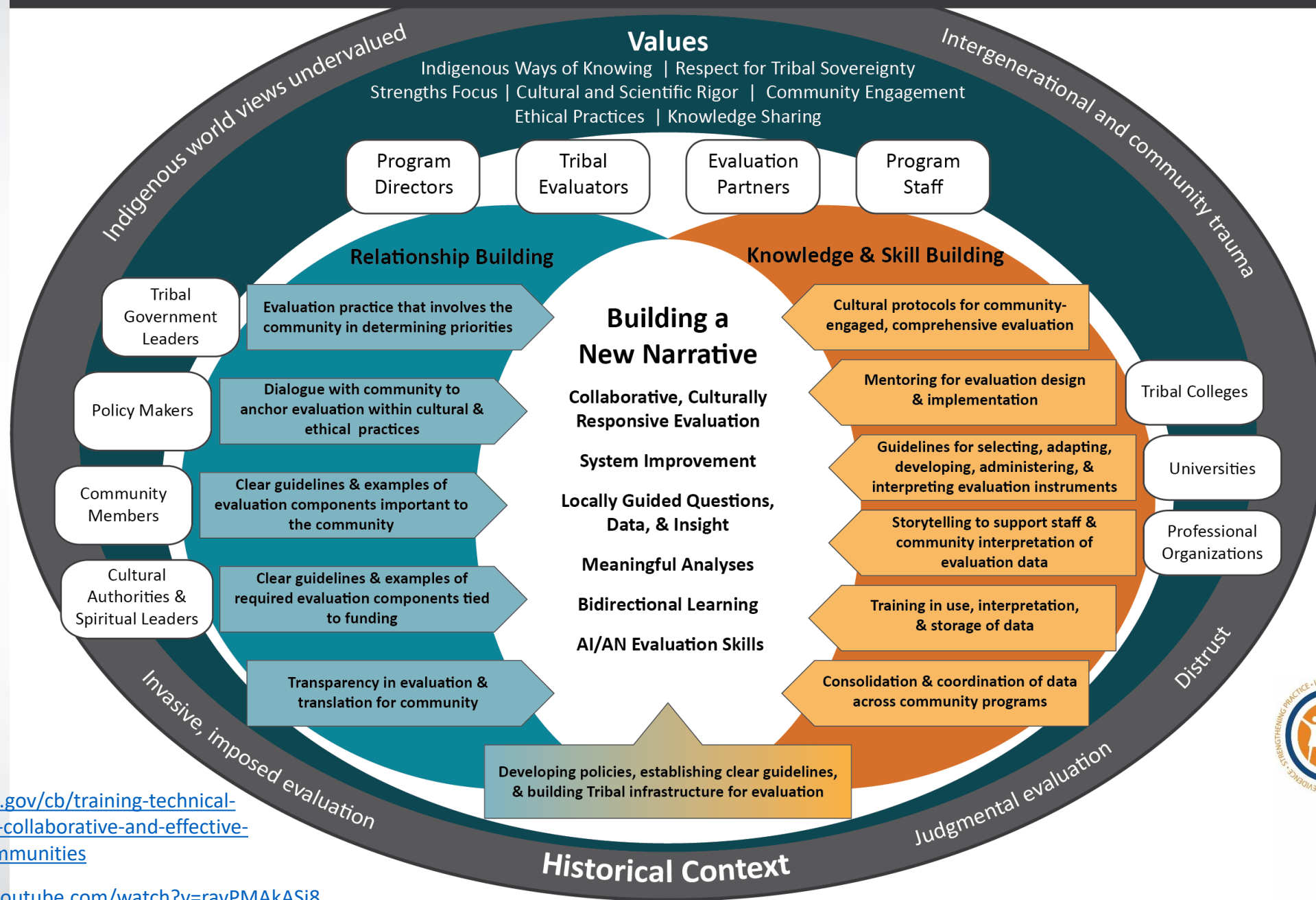
Center for Indigenous Research Collaborations and Learning for Home Visiting (CIRCLE-HV)



- For upcoming cohorts, Tribal MIECHV evidence-building evaluations will be voluntary and competitive
- The Center aims to build evidence and understanding of home visiting in Indigenous communities through:
 - Research-Practice Partnerships to research entities to pursue innovative research and evaluation of mutual interest with home visiting programs
 - A Cross-Site Study co-created with home visiting programs that serve Indigenous children and families

<https://www.acf.hhs.gov/opre/project/center-research-practice-collaborations-indigenous-home-visiting-crpc-ihv>

CO-CREATING COLLABORATIVE & EFFECTIVE EVALUATION TO IMPROVE TRIBAL CHILD WELFARE PROGRAMS



<https://www.acf.hhs.gov/cb/training-technical-assistance/roadmap-collaborative-and-effective-evaluation-tribal-communities>

<https://www.youtube.com/watch?v=ravPMAkASi8>