

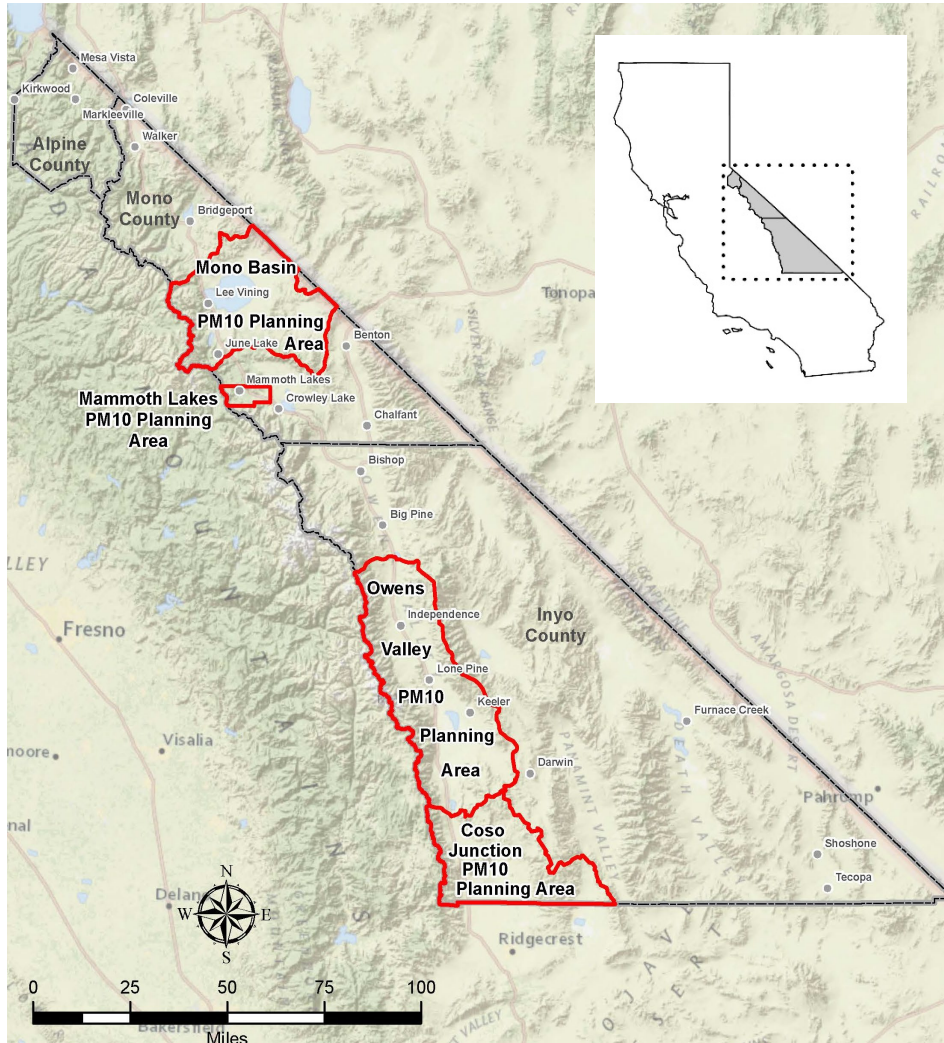
Off-Lake Sources of Airborne Dust Owens Valley PM10 Planning Area

Owens Lake Scientific Advisory Panel
May 9, 2024 Virtual Meeting

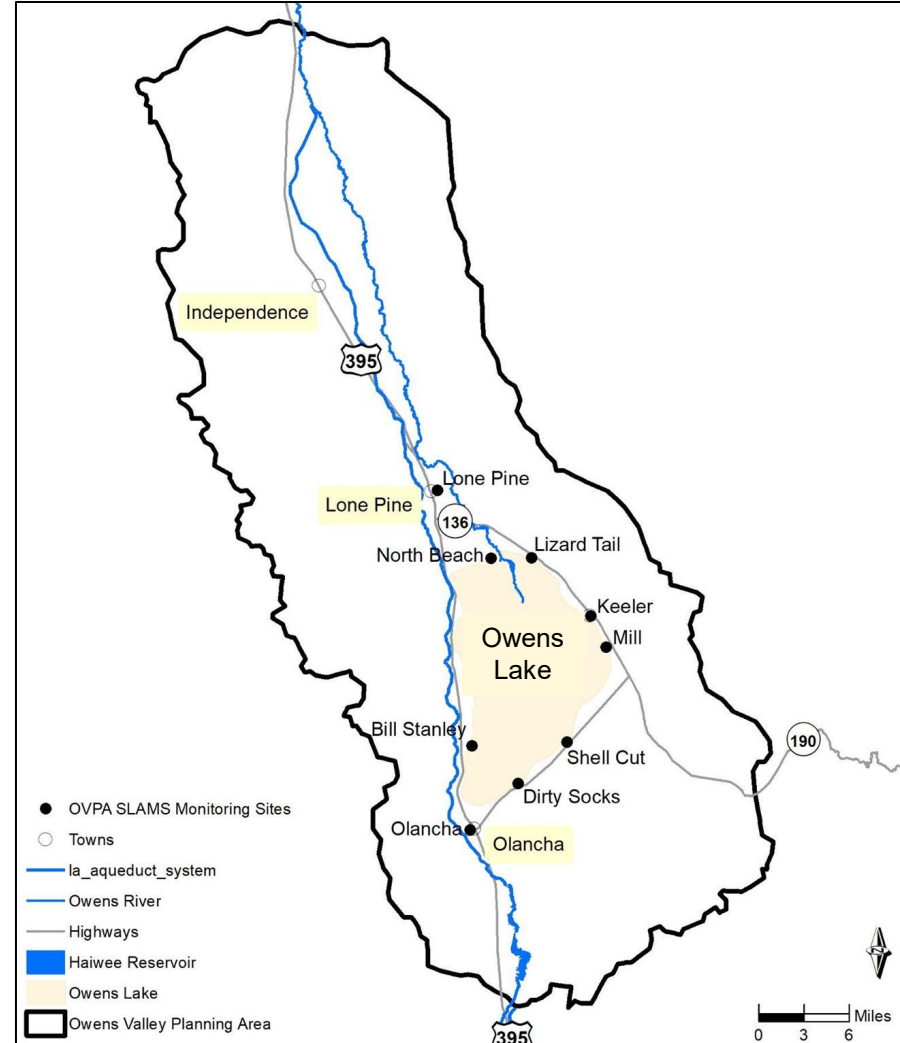


Great Basin Unified Air Pollution Control District

Great Basin Unified Air Pollution Control District (GBUAPCD)



Owens Valley Planning Area (OVPA)



OVPA Current Status

Designated serious nonattainment for PM10 National Ambient Air Quality Standard (NAAQS) by EPA in 1987

- Phased implementation of dust controls on Owens Lake since 2000
- LADWP maintains ~47.8 sq miles of dust controls on Owens Lake
- District implementing Keeler Dunes Project
- Control strategy has resulted in significant progress toward PM10 attainment
- However, both on-lake and off-lake sources continue to cause and contribute to PM10 exceedances in violation of the NAAQS
- 2016 OVPA State Implementation Plan has provisions to allow for District to order additional areas for control on the lake bed (under 3,600 ft elevation)

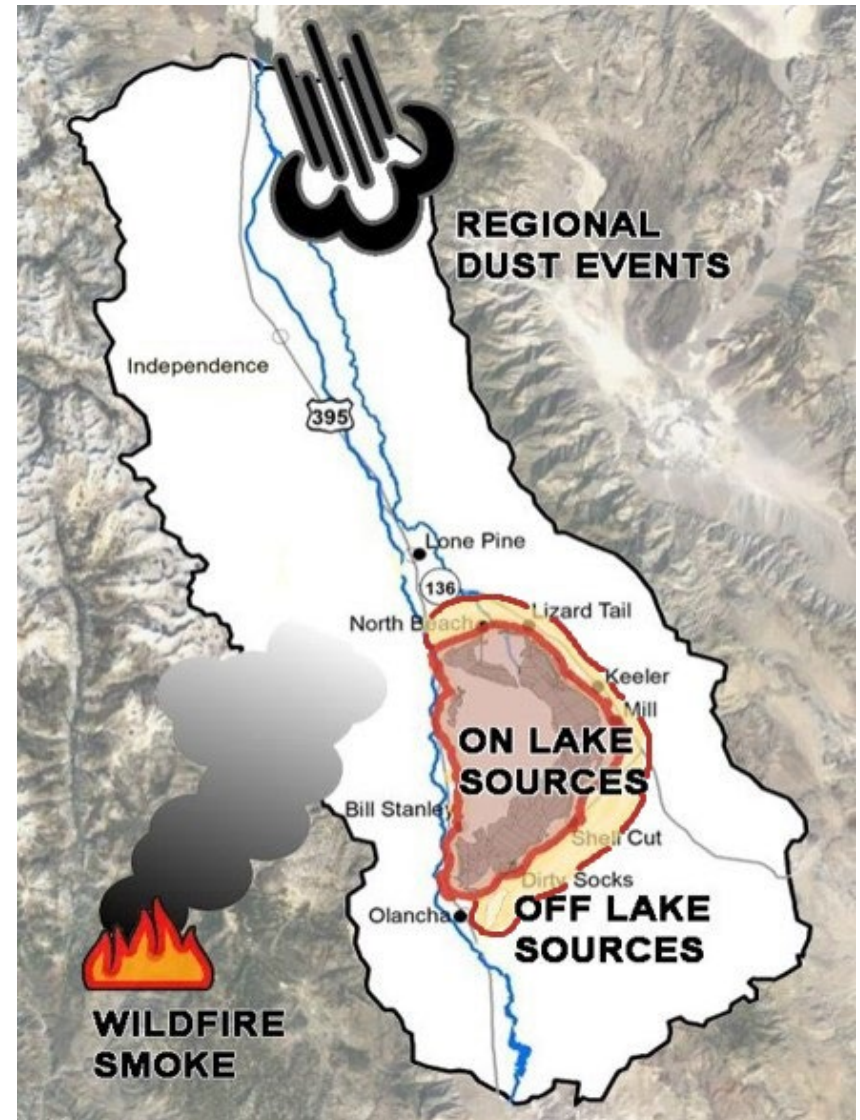


Current Sources of PM10 Exceedances

Primary sources of PM10:

- On-lake dust sources
- Off-lake local dust sources
- Regional dust events
- Wildfire smoke events
- Combinations of the above

*There are other sources of PM10 than listed above (ie. transportation, stationary sources, woodburning devices) however contributions from these other PM10 source types are generally not significant contributors to PM10 exceedances in the OVPA

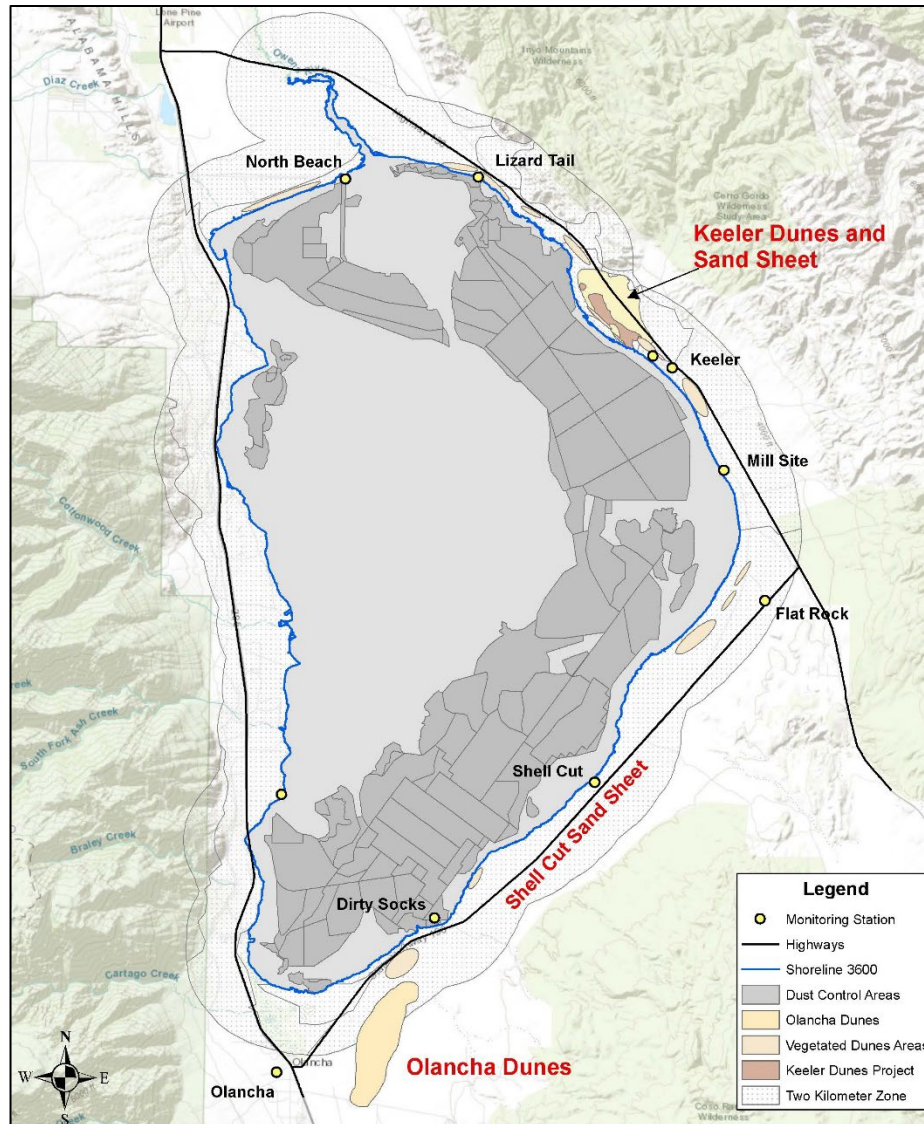


OVAP PM10 Source Categories

On-Lake (below 3,600 ft elevation)		Uncontrolled, unordered areas	Areas below 3,600 ft that have not been ordered for control by the District
		Uncontrolled, ordered areas	Areas ordered for dust control but deferred due to the presence of sensitive resources
		Controlled areas	Owens Lake Dust Mitigation Project Area
Off-Lake (below 3,600 ft elevation)	Local (within OVPA)	Local off-lake sources	Sources adjacent or near Owens Lake, primarily within ~2km of the shoreline. Includes local dunes, sand sheets, flash flood deposits and other open areas.
		Stationary sources	Permitted facilities/equipment (ex. mines, engines, landfills)
		"Other" local sources	Grouping of all the other local source types such as woodburning devices, transportation emissions (paved road dust, tailpipe emissions), unpaved road dust, prescribed burning.
	Regional (outside OVPA)	Regional dust events	Dust events from outside the OVPA.
		Wildfire smoke	Smoke from wildfire smoke events.

Local Off-Lake Sources

- Located at elevations above the 3,600 ft regulatory shoreline of Owens Lake
- Sources are adjacent or near Owens Lake primarily within 2-3 km of the shoreline
- Includes local dunes, sand sheets, flash flood deposits, and other open areas
- OLSAP should focus on off-lake sources that data indicate are significant or potentially significant contributors to high PM10 concentrations



GBUAPCD Request for OLSAP

- Summarize the overall nature and character of off-lake sources
- Develop a summary of previous work on off-lake sources
- Describe the origin and development of significant off-lake dust sources
- Discuss and make recommendations regarding:
 - Potential options and recommendations to better characterize, monitor, and track changes in the PM₁₀ contributions of off-lake sources
 - Possible dust control measures for off-lake sources, with consideration of feasibility
 - If appropriate, discuss the applicability of U.S. EPA's Exceptional Events Policy for excluding air quality monitoring data affected by off-lake sources

