



**Chanita Hughes Halbert, PhD**  
**Vice Chair for Research, Department of Population and Public Health Sciences**  
**Associate Director for Cancer Equity, Norris Comprehensive Cancer Center**  
**University of Southern California**

Keck School of Medicine of **USC**

**Department of Population and  
Public Health Sciences**

**USC** Norris Comprehensive  
Cancer Center  
Keck Medicine of **USC**

**Cancer Health Disparities:** Differences in cancer risk and outcomes that are linked with social, economic, and/or environmental disadvantage among groups that have systematically experienced obstacles due to:

- Racial/ethnic background
- Religion
- Socioeconomic status
- Gender
- Age
- Disability
- Sexual orientation/gender identity
- Geographic location

Healthy People 2030

Keck School of Medicine of USC

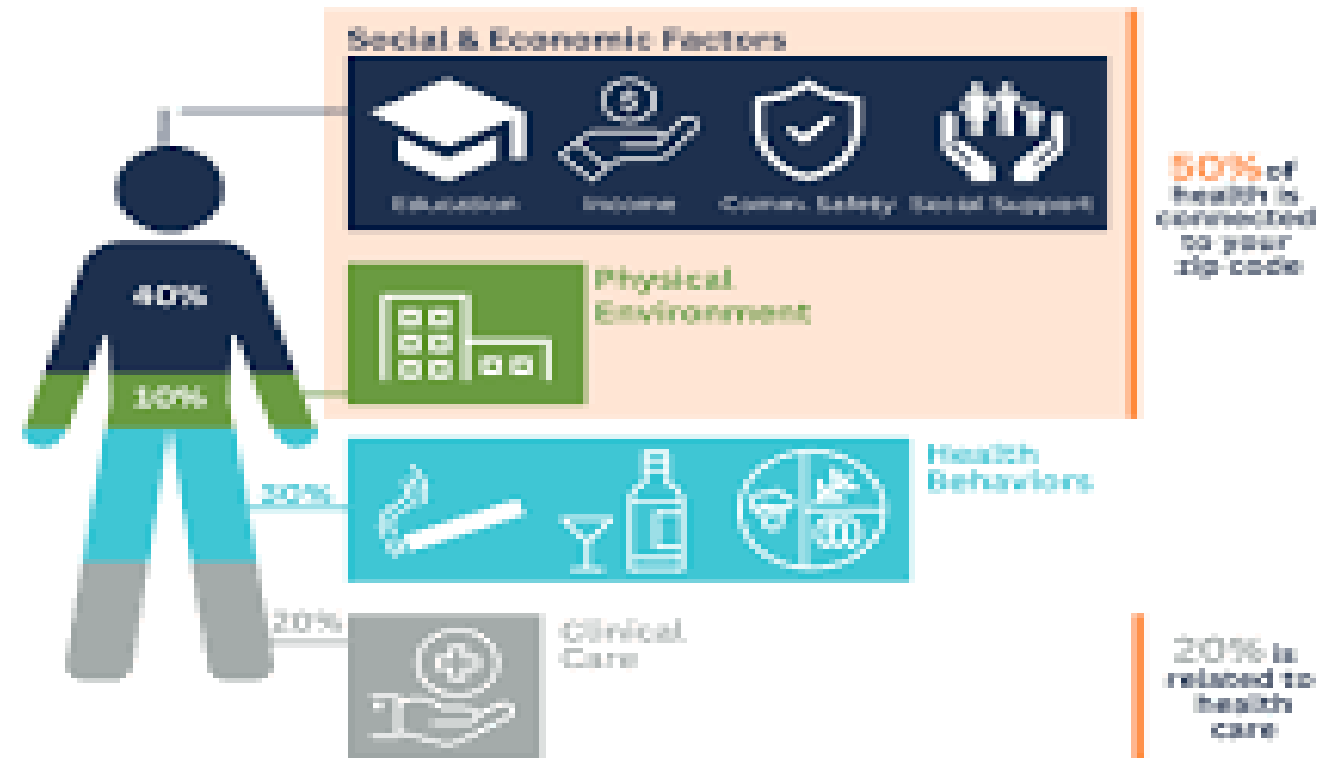
Department of Population and  
Public Health Sciences

USC Norris Comprehensive  
Cancer Center  
Keck Medicine of USC

# Social Determinants of Health

*What impacts your health?*

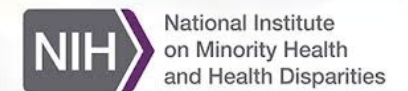
*“Create social, physical, and economic environments that promote attaining the full potential for health and well-being for all.” Healthy People 2030*







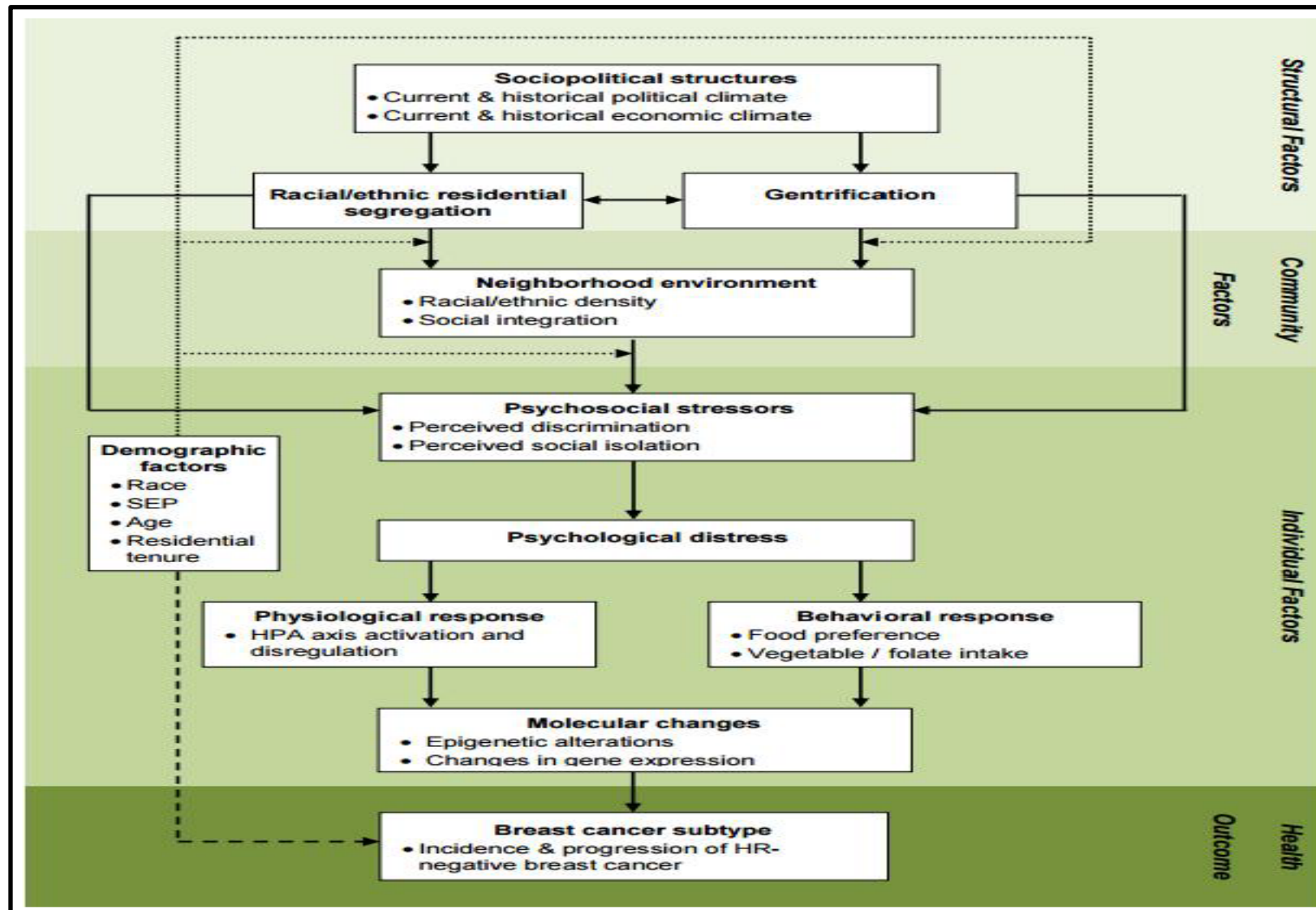
National Academy of Medicine, <https://nam.edu/social-determinants-of-health-top-five-lessons-why-plus-five/>

# Determinants of Minority Health and Cancer Health Disparities

## National Institute on Minority Health and Health Disparities Research Framework

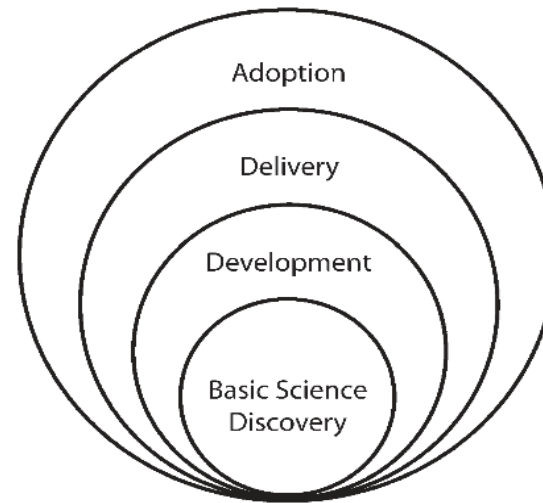


		Levels of Influence*			
		Individual	Interpersonal	Community	Societal
Domains of Influence (Over the Lifecourse)	Biological	Biological Vulnerability and Mechanisms	Caregiver–Child Interaction Family Microbiome	Community Illness Exposure Herd Immunity	Sanitation Immunization Pathogen Exposure
	Behavioral	Health Behaviors Coping Strategies	Family Functioning School/Work Functioning	Community Functioning	Policies and Laws
	Physical/Built Environment	Personal Environment	Household Environment School/Work Environment	Community Environment Community Resources	Societal Structure
	Sociocultural Environment	Sociodemographics Limited English Cultural Identity Response to Discrimination	Social Networks Family/Peer Norms Interpersonal Discrimination	Community Norms Local Structural Discrimination	Social Norms Societal Structural Discrimination
	Health Care System	Insurance Coverage Health Literacy Treatment Preferences	Patient–Clinician Relationship Medical Decision-Making	Availability of Services Safety Net Services	Quality of Care Health Care Policies
Health Outcomes		 Individual Health	 Family/ Organizational Health	 Community Health	 Population Health





**Moving Toward Paradigm-Shifting Research in Health Disparities Through Translational, Transformational, and Transdisciplinary Approaches**



**Figure 2—Translational continuum for health disparities research.**

Irene Dankwa-Mullan, MD, MPH, Kyu B. Rhee, MD, MPP, David M. Stoff, PhD, Jennifer Reineke Pohlhaus, PhD, Francisco S. Sy, MD, DrPH, Nathaniel Stinson Jr, MD, PhD, and John Ruffin, PhD



### Workshop Objectives:

- Examine the interactions between biological variables and social determinants of health
- Understand how the interaction between SDOH and biological variables affect cancer-related outcomes

### Planning Committee:

- Chanita Hughes-Halbert, PhD (Co-Chair)
- Stanton L. Gerson, MD (Co-Chair)
- Smita Bhatia, MD, MPH
- Cathy Bradley, PhD
- Otis Brawley, MD, MACP, FRCP(L), FASCO, FACE
- Gwen Darien, BA
- Scarlett Lin Gomez, MPH, PhD
- Larissa Nekhlyudov, MD, MPH, FASCO
- Lisa C. Richardson, MD, MPH
- Cleo A. Ryals, PhD
- Lawrence N. Schulman, MD, MACP, FASCO
- Robert A. Winn, MD
- Robin Yabroff, PhD, MBA
- Clayton C. Yates, PhD
- National Academies Staff

*Thank you!*