

Assessment of NIH Research on Women's Health
National Academies of Science, Engineering and Medicine
May 20, 2024

NIH/NICHD Career Development Awards for Ob/Gyn's

The Women's Reproductive Health Research (WRHR) Program

Christos Coutifaris, MD, PhD
Department of Obstetrics and Gynecology



Perelman School of Medicine
University of Pennsylvania
Philadelphia, Pa 19104

Disclosures

- NICHD Grant Funding
- WRHR mentor and Research Director

Past

- Committees
 - RSDP (evaluation)
 - AAOGF (selection and evaluation)
- T32 Program Director



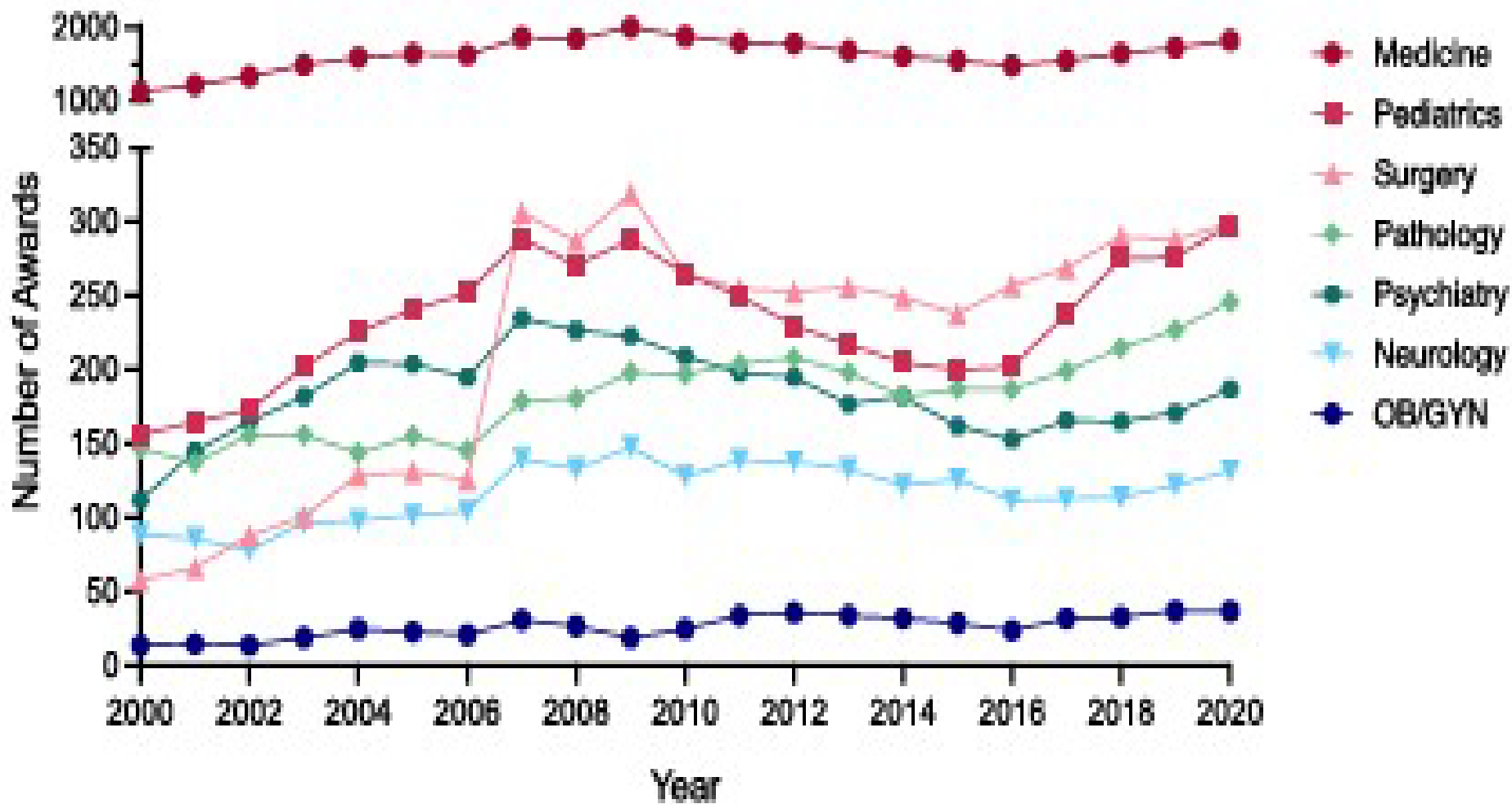
ObGyn Workforce pipeline

- 5%-6% of medical school graduates go into ObGyn
- 241 Programs (IM 467) – 4 years
- 1150-1250 graduates/year (IM 10,000-12,000)
- 1/3 of graduates subspecialize (IM 70-75%)
 - 2-3 years (with research component)
- Faculty appointment
 - 4-7 years post MD graduation
- ABOG Certification
 - 2-4 years post clinical training graduation

MD-PhD PGY-1 Residents by Specialty, 2015-2019	n=565 ± 24 Mean (SD), %
Internal Medicine	37.4 (2.4)
Pediatrics	10.5 (1.2)
Pathology	8.5 (0.6)
Psychiatry	7.5 (1.2)
Surgery	6.7 (0.5)
Transitional Year	4.6 (0.7)
Neurosurgery	3.2 (0.5)
Anesthesiology	2.9 (1.0)
Neurology	2.8 (0.5)
Obstetrics & Gynecology	2.5 (0.5)



Trends in Individual K Awards (K08, K23) by Department



Parchem, et al., More than grit: growing and sustaining physician-scientists in obstetrics and gynecology

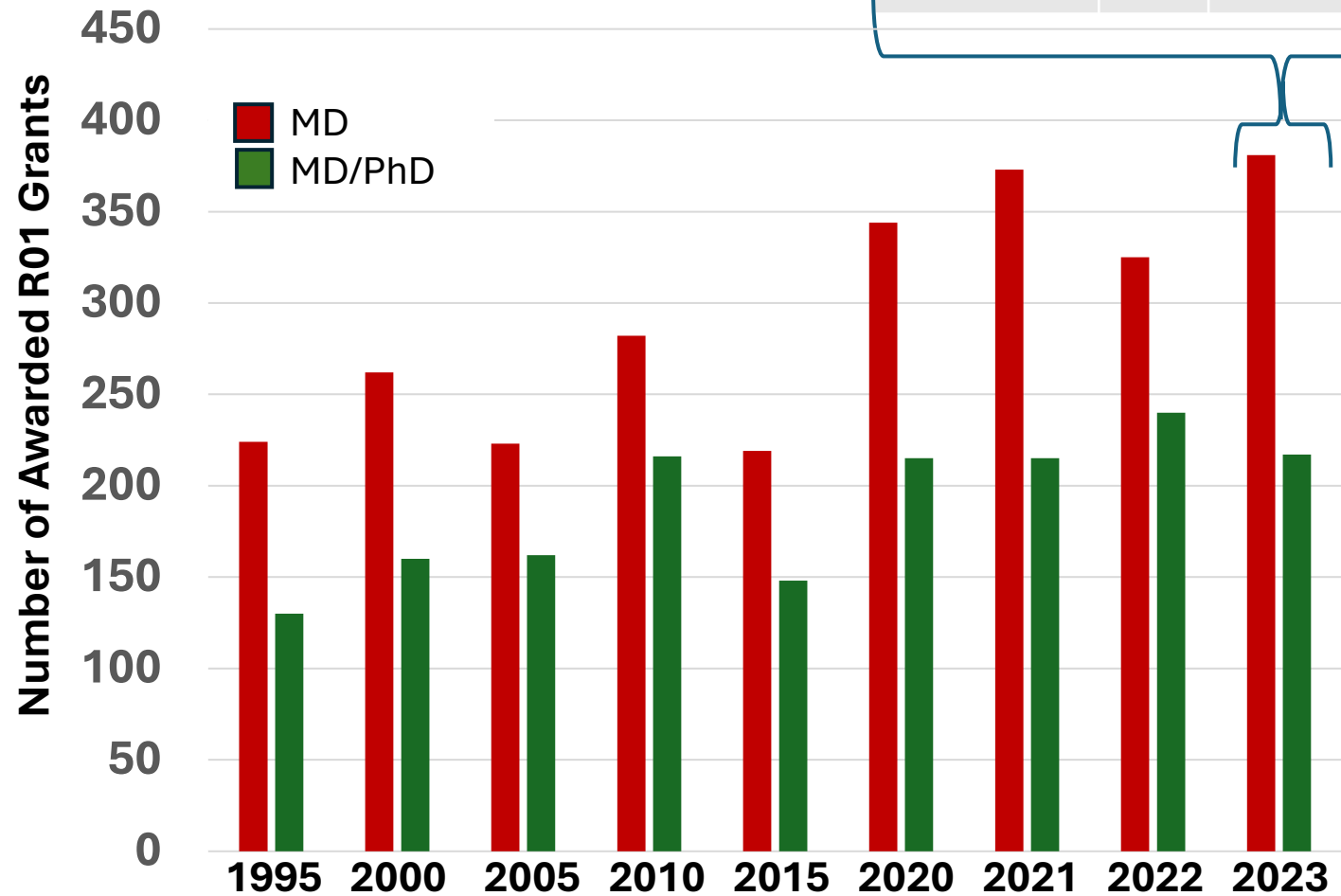
Am J Obstet Gynecol., 2022



First R01 or equivalent

NIH National Institutes of Health
Office of Extramural Research
Lauer, 11/2021 and 5/2024

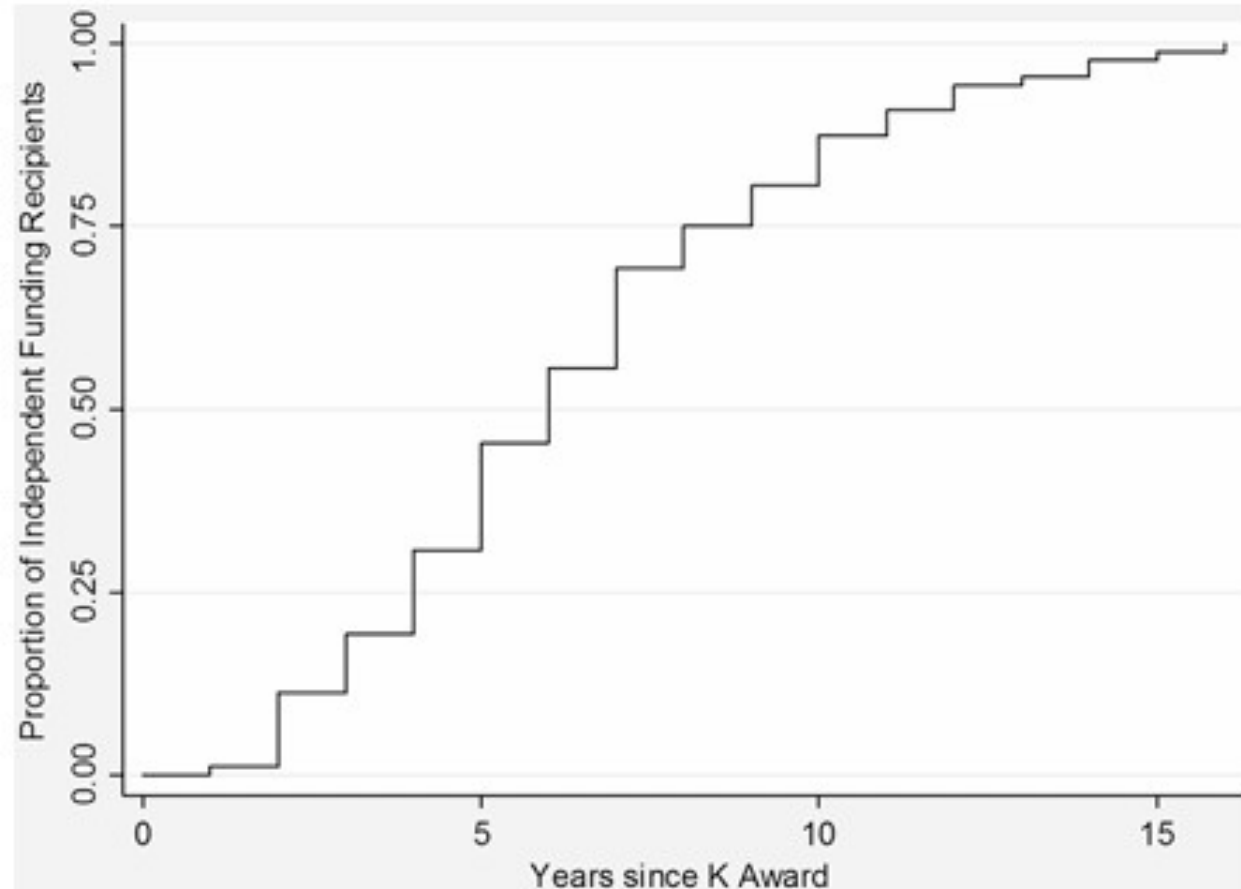
extramural
NEXUS



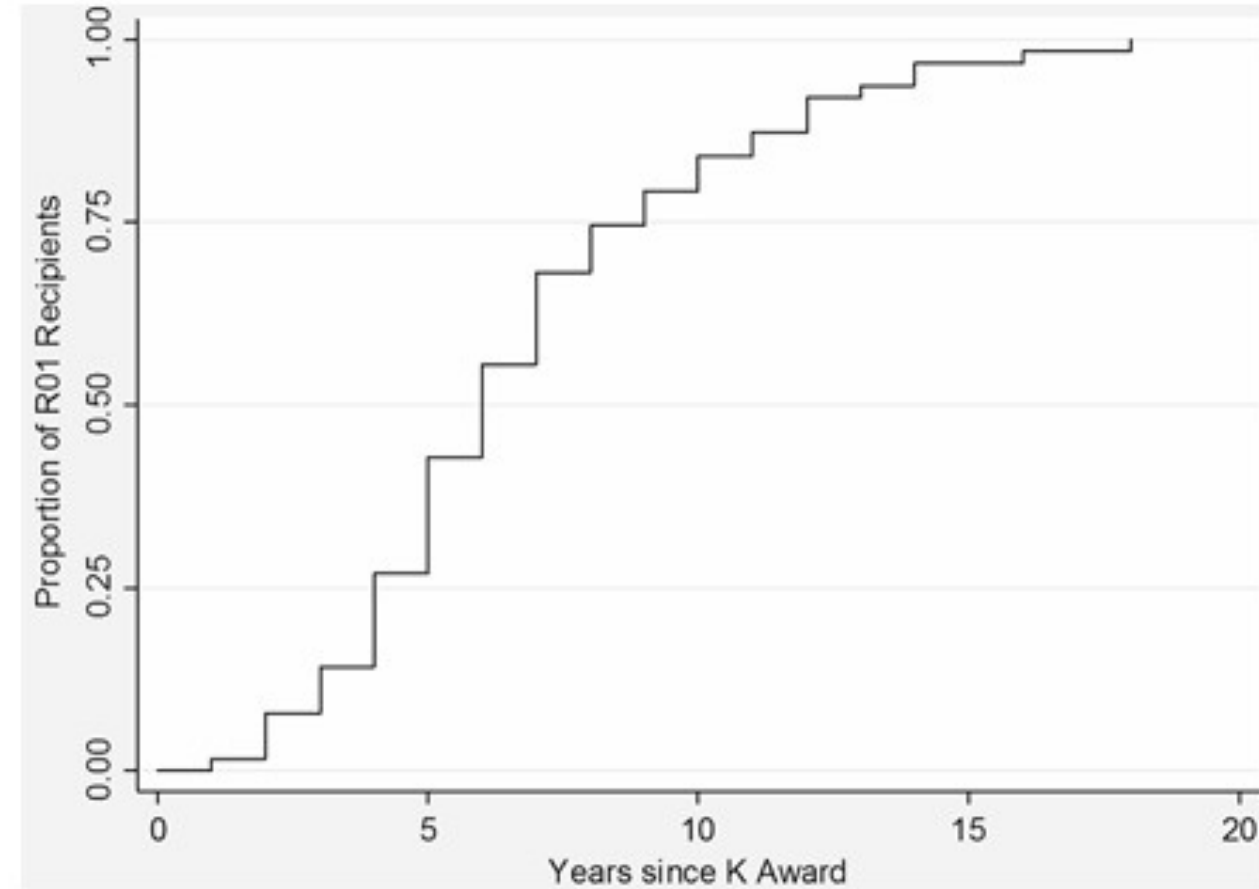
2023	Age	
	MD	MD/PhD
90 th %'ile	56	54
75 th %'ile	48	48
25 th %'ile	41	41
10 th %'ile	39	39



Ob/Gyn K to Independent Funding Transition



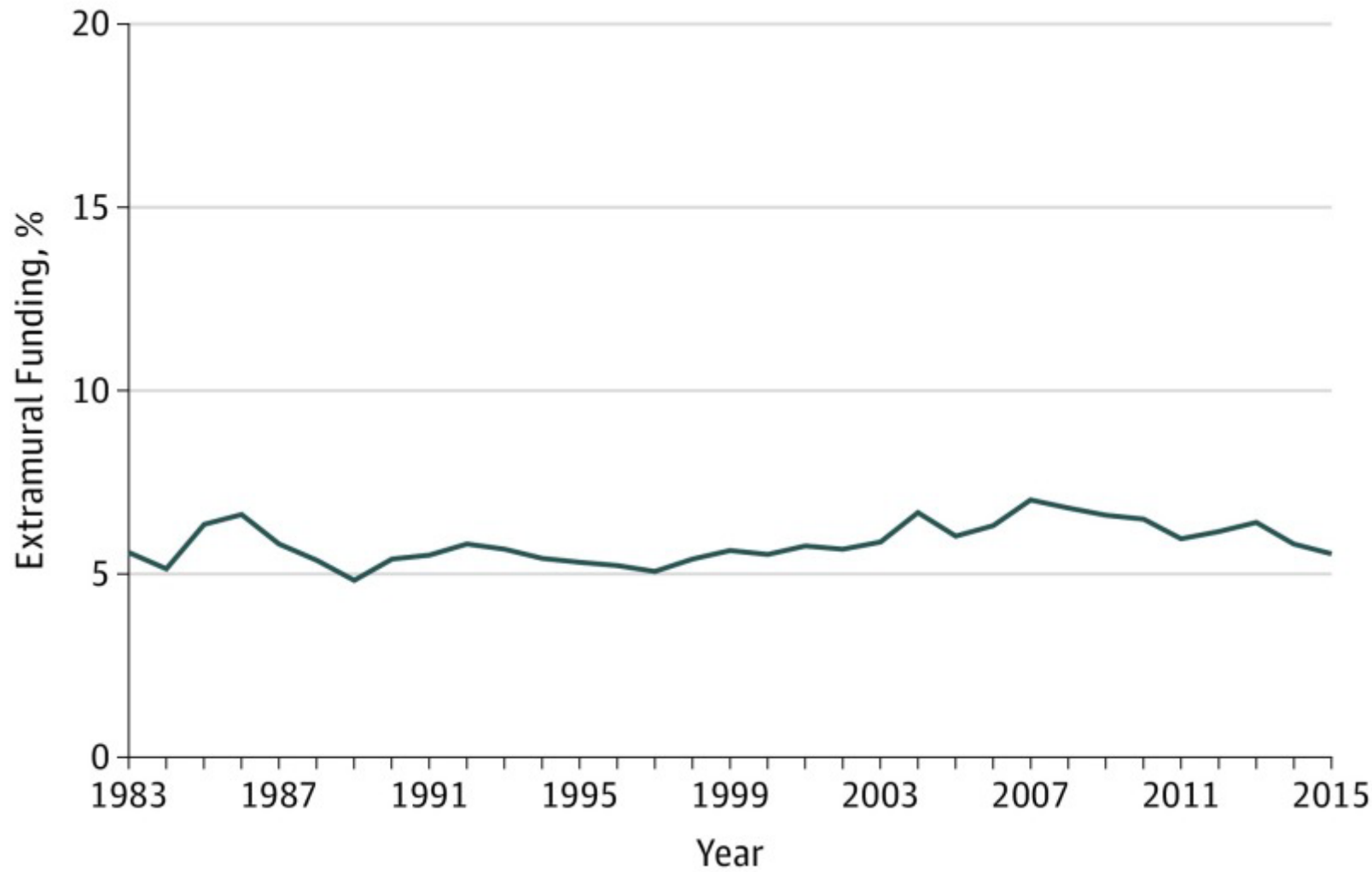
Time to conversion from K award to any type of independent funding among all independent funding recipients.



Time to conversion from K award to R01 among R01 recipients.



NICHD Extramural Training and Career Development



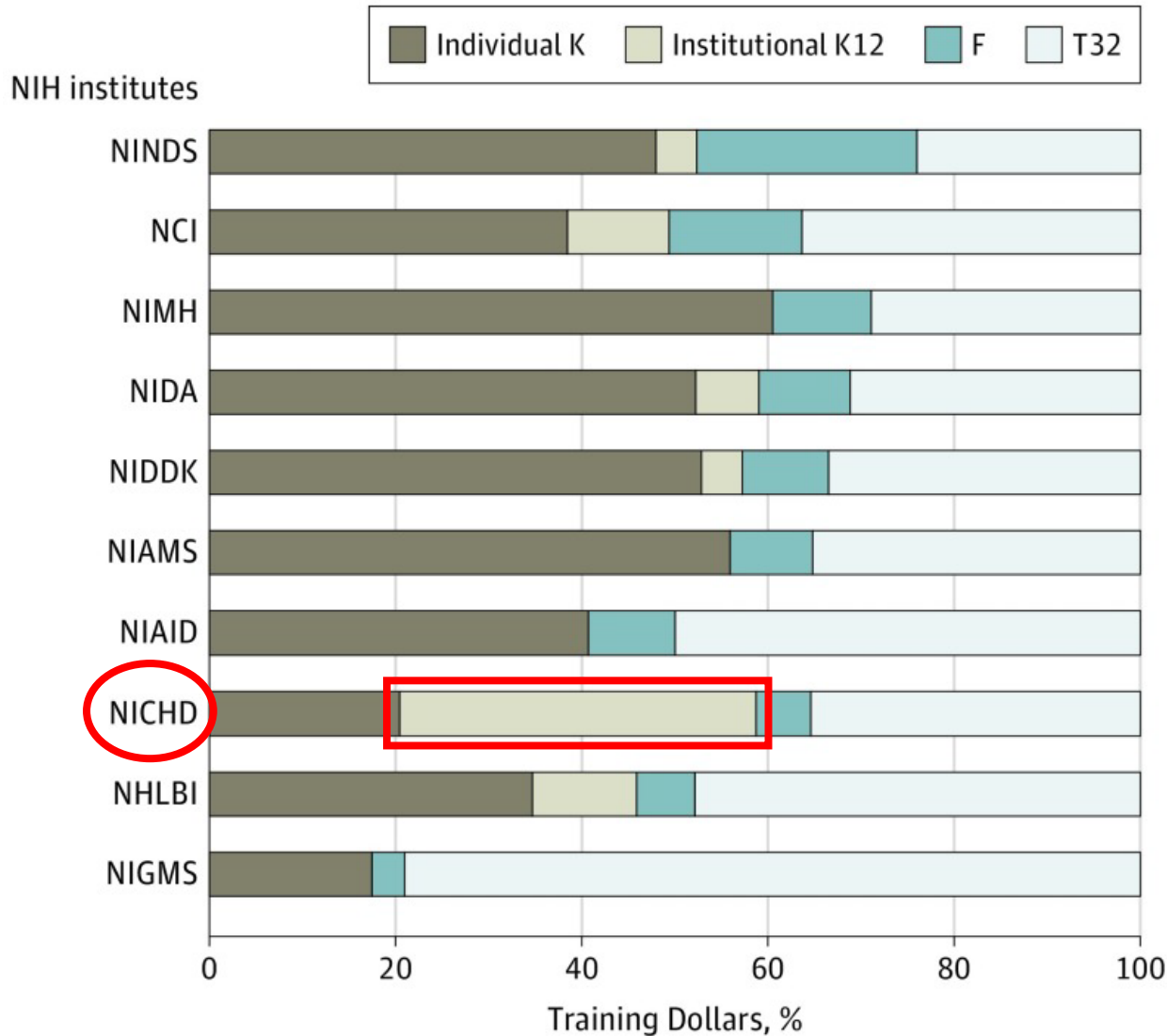
2016
5.5%

\$\$?

*Twombly et al., Association of National Institute of Child Health and Human Development Career Development Awards with Subsequent Research Project Grant Funding. **JAMA Pediatr.** 172:226-231, 2018*



Training and Career Development Funding Across NIH



ALL
specialties / subspecialties /
scientific focus

*Twombly et al., Association of National Institute of Child Health and Human Development Career Development Awards with Subsequent Research Project Grant Funding. **JAMA Pediatr.** 172:226-231, 2018*

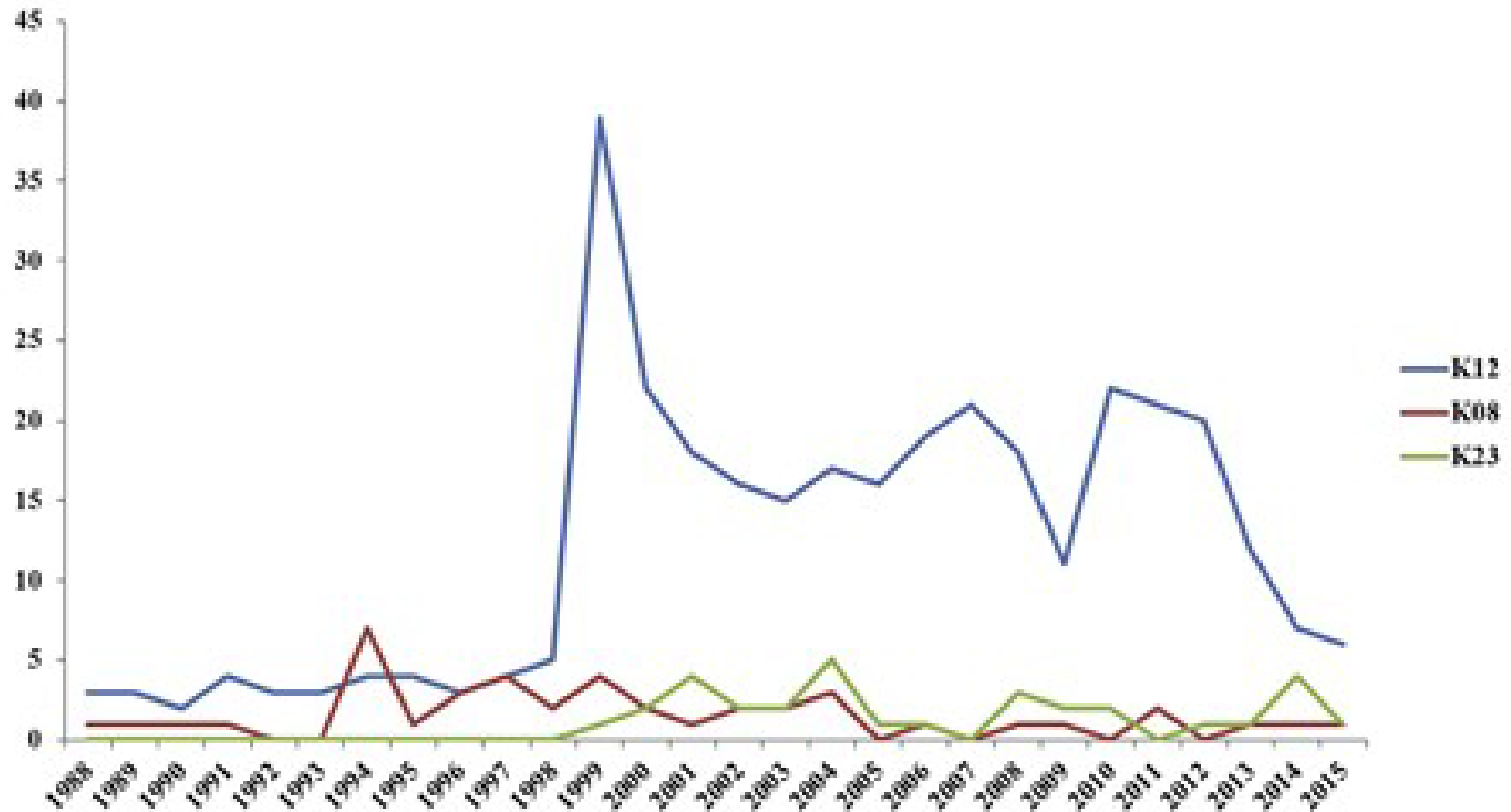


K12 Programs for Obstetricians and Gynecologists

- RSDP (1988)
- WRHR (1998)
 - 1998: 12 Programs / 1999: +8 Programs for a Total of 20 (3 slots/program)
 - 2024: 15 Programs (2 slots/program)
 - 28 Institutions/ObGyn Departments have participated
- [BIRCWH (2000)]



NICHD Ob/Gyn NEW K Awards/Year



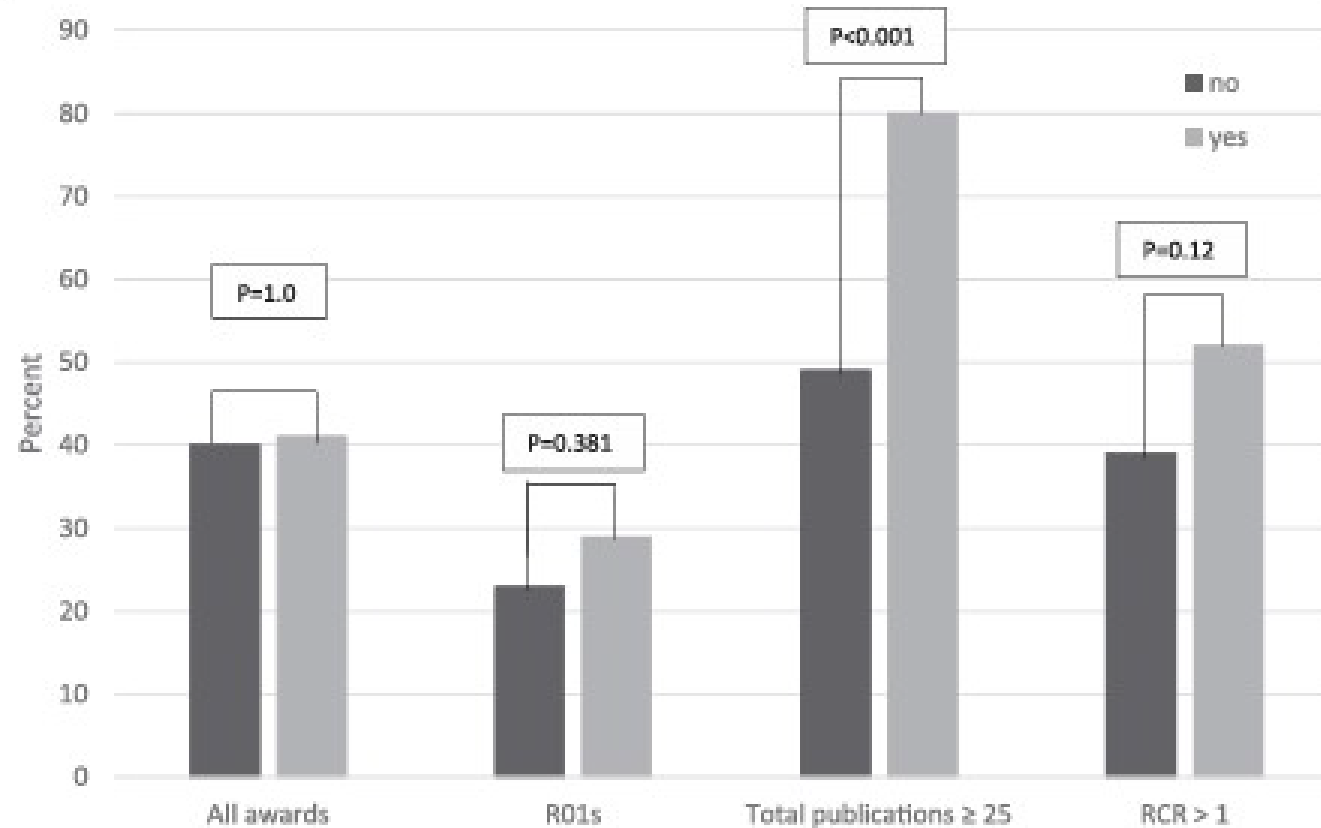
Number of new K recipients each year.

Okeigwe et al. Physician-scientists in obstetrics and gynecology. *Am J Obstet Gynecol* 2017.



The WRHR Program: Scholarly Success Rates of Survey Respondents and Non-Responders

- 1998-2015
- 223 (+34) Scholars
- 178
- 151
- 69 (45.7%)



Y axis: proportions of survey respondents (gray) and survey nonrespondents (black). X axis, from left to right: ≥ 1 National Institutes of Health award, ≥ 1 RO1, ≥ 25 publications, and RCR > 1 .



WRHR

- Departmental benefits
 - Financial
 - Development/expansion of research program(s)
 - Development of physician investigators/scientists
- Scholar benefits
 - Dedicated time for research
 - Networking
 - Exposure to NIH
- Departmental drawbacks
 - Financial
- Scholar drawbacks
 - Financial
 - Delay in Board Certification

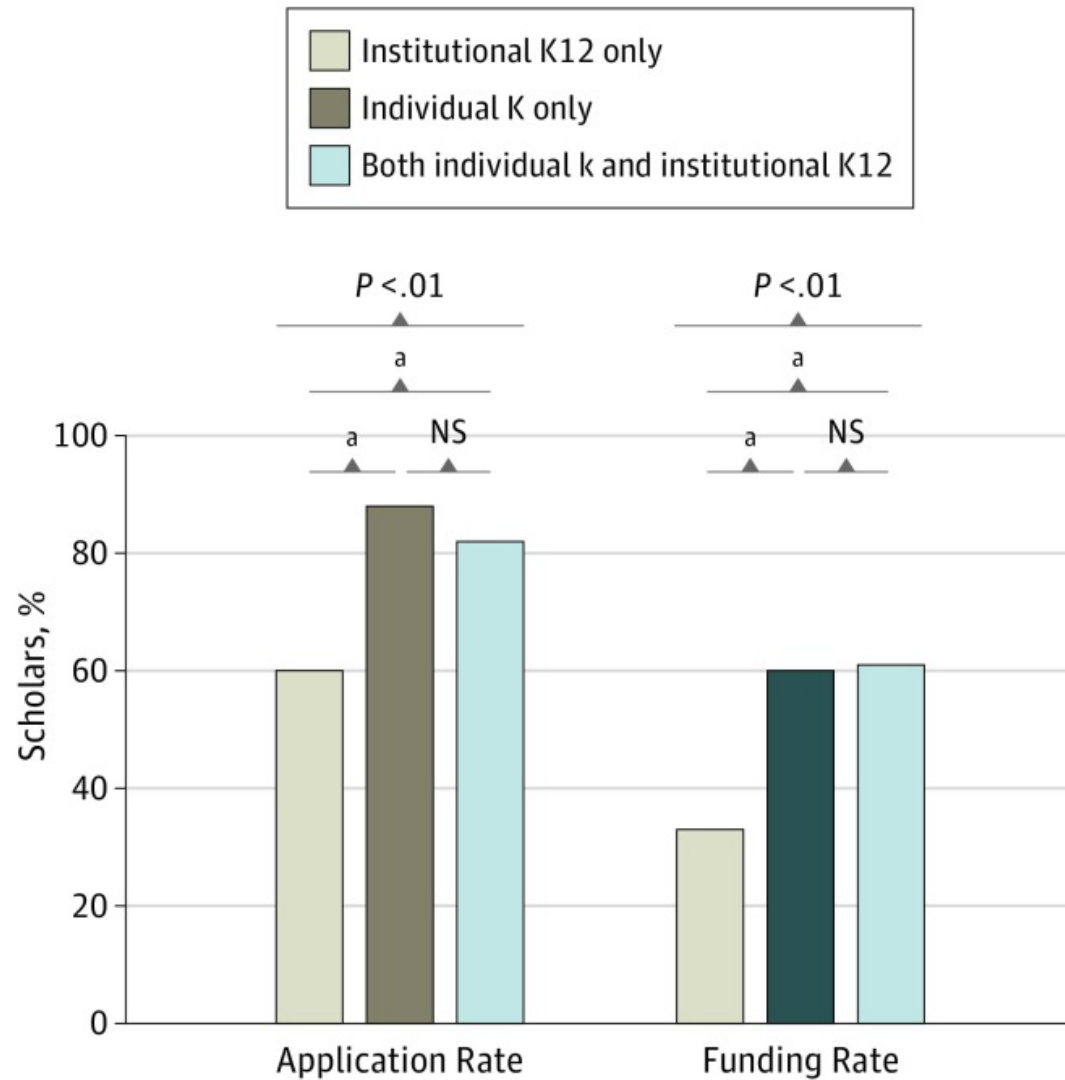


WRHR / NICHD K Awards Suggestions

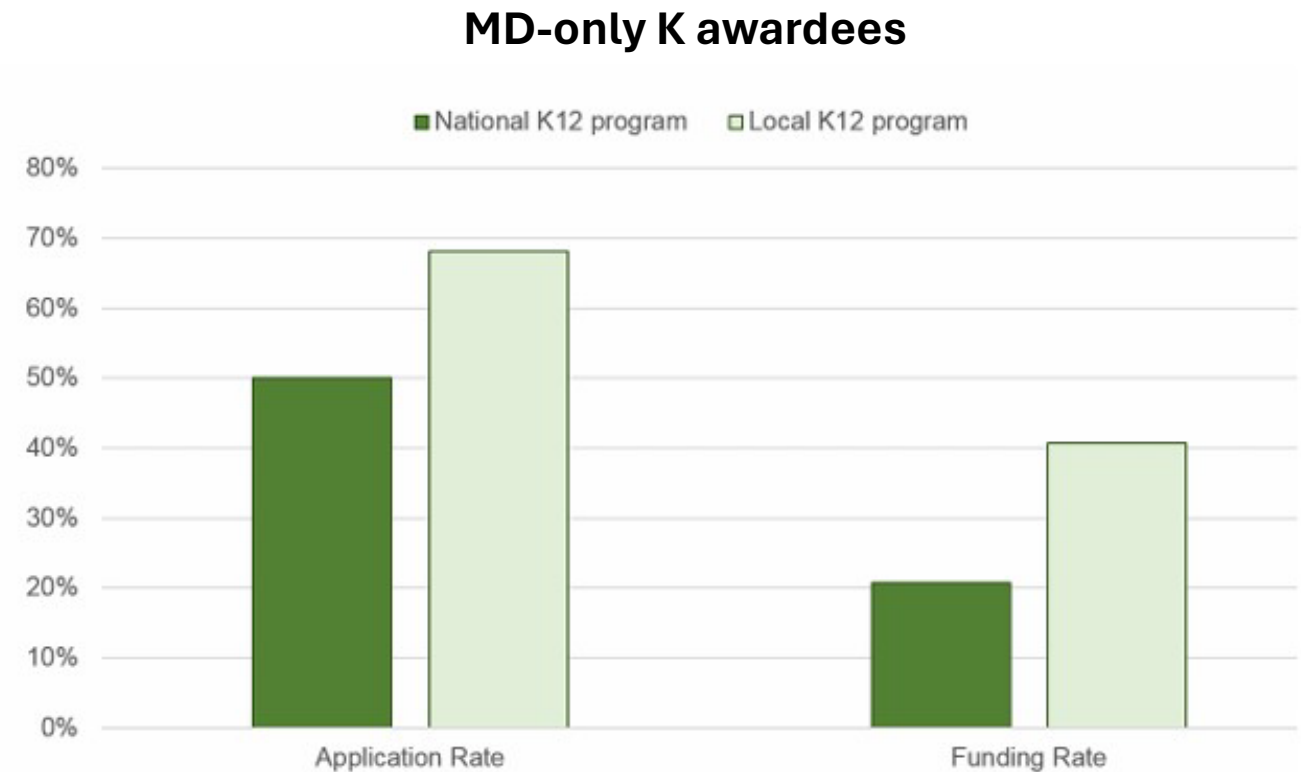
- Duration of WRHR/K appointment (Phase 1/Phase 2)
- Flexibility in effort
 - Bench/translational research (75-100%)
 - Clinical and health services research (50-75%)
- Multi-thematic Institutional WRHR programs
- Increase the T32 and F32 trainee pipeline
- Given the shift in support from K12 (WRHR cuts) to individual K's
 - Earmark K08 and K23
 - For Ob/Gyn's
 - (For other investigators with Women's Health Research focus)
- Modify categories for K01 eligibility (women-specific conditions)
- K99-R00



NICHD K Awards and Subsequent Research Funding



ALL
specialties / subspecialties /
scientific focus



Twombly et al., Association of National Institute of Child Health and Human Development Career Development Awards with Subsequent Research Project Grant Funding. JAMA Pediatr. 172:226-231, 2018

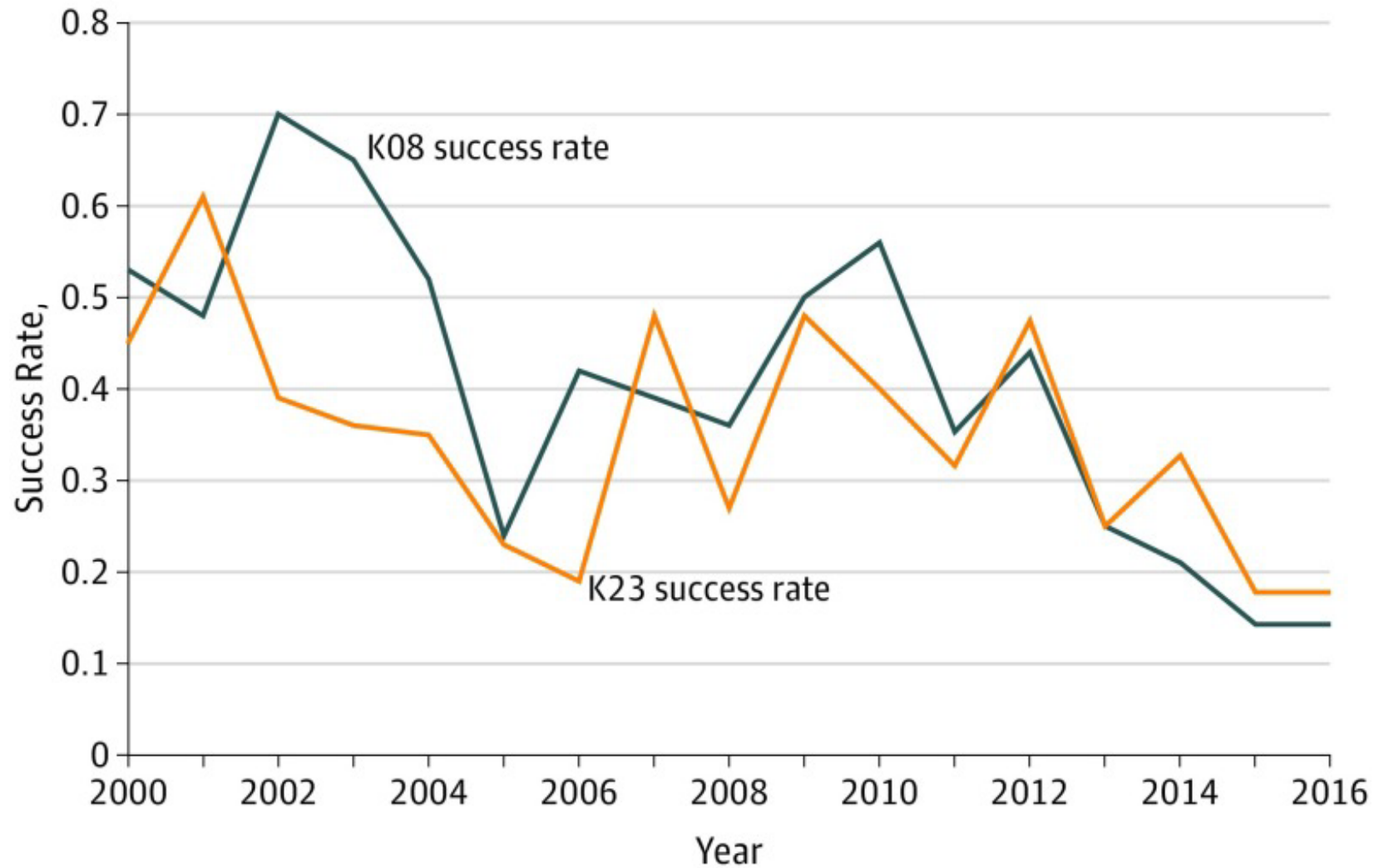


NICHD K Awards Review Committee (2015)

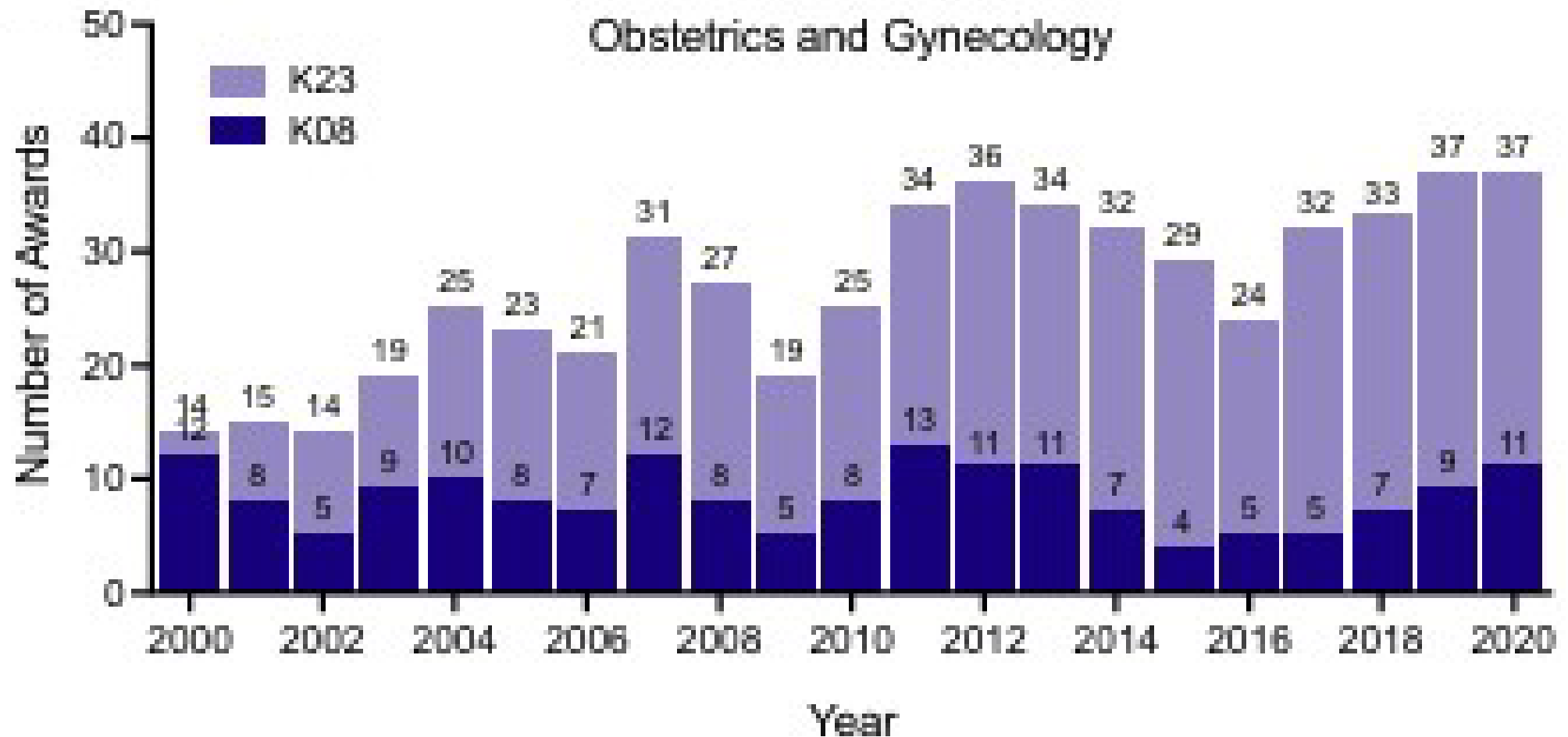
- Shift support from K12 to individual K's
- Increase success for K99-R00
- Modify K08 and K23 salary and research allowances
- Focus K08 and K23 fellows/scholars at more junior levels
- Consider modifying categories for K01 eligibility
- Create multi-thematic institutional K12 programs
- Consider consolidating reviews of K12 programs
- Consider establishing expectation for the duration of K12 appointment
- Continue to monitor K programs



NICHD Individual K Success Rates



*Twombly et al., Association of National Institute of Child Health and Human Development Career Development Awards with Subsequent Research Project Grant Funding. **JAMA Pediatr.** 172:226-231, 2018*



Parchem, et al., More than grit: growing and sustaining physician-scientists in obstetrics and gynecology

Am J Obstet Gynecol., 2022

