

Implementation Science within CDC's Division of Violence Prevention

Tom Simon, PhD

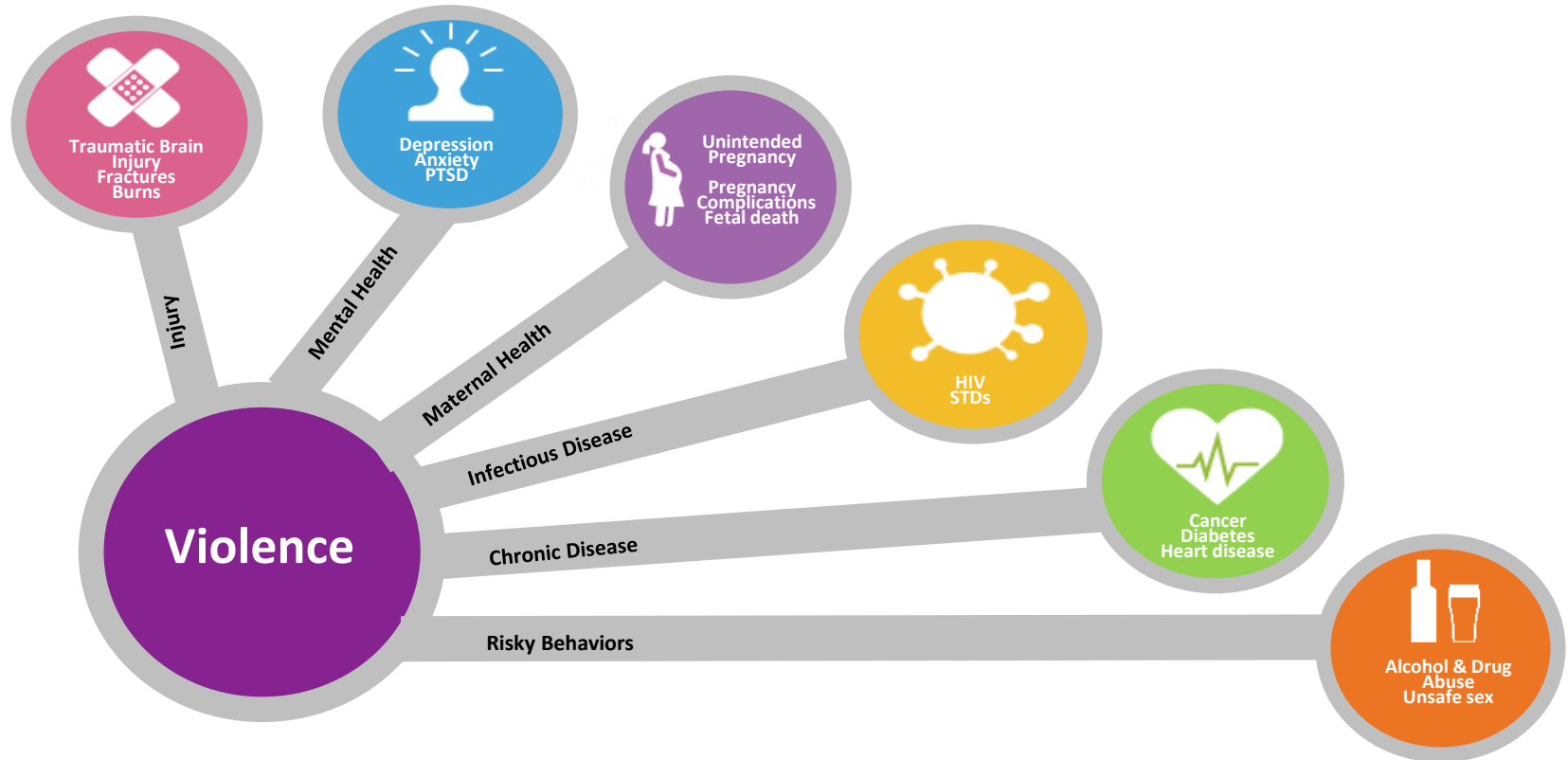
Lianne Estefan, PhD, MPH

Division of Violence Prevention

October 28, 2024



Violence has lasting impacts on health

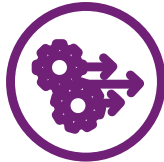


DVP's 5-Year Strategic Vision

DVP brings together partners and connects data, science, and action to inform the development, implementation, and sustainability of violence prevention strategies proven to be effective.



Provide leadership and build bridges across sectors to use data and conduct research to inform prevention activities

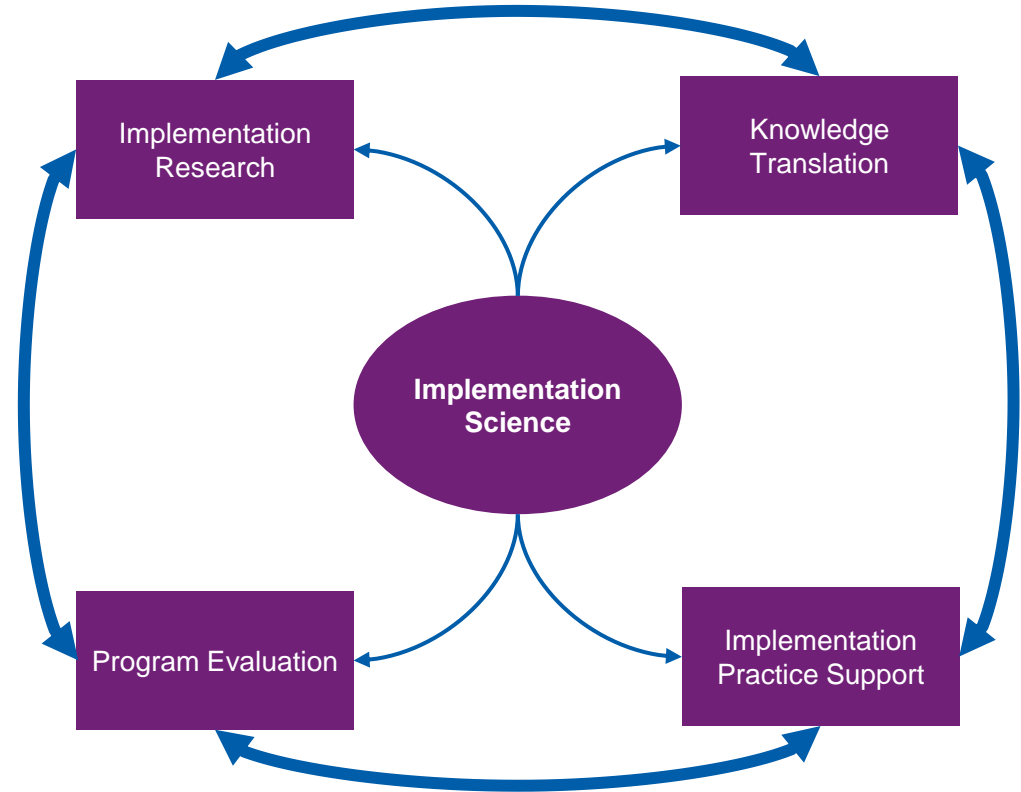


Identify, evaluate, and apply solutions for preventing violence



Focus efforts on those at greatest risk for violence

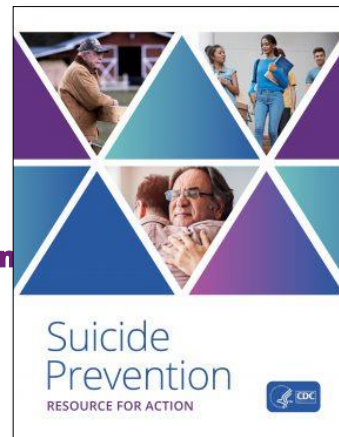
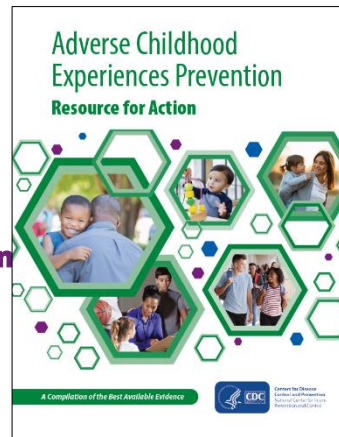
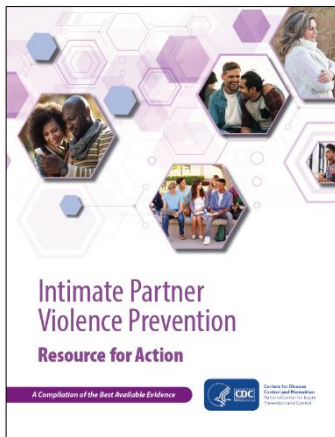
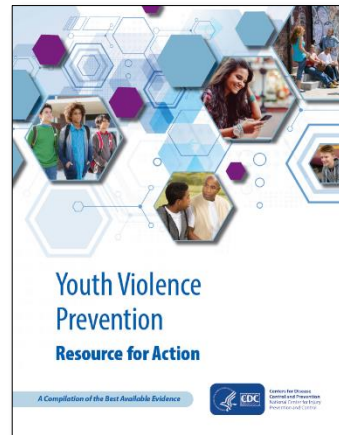
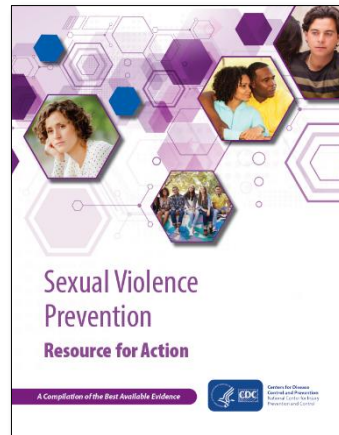
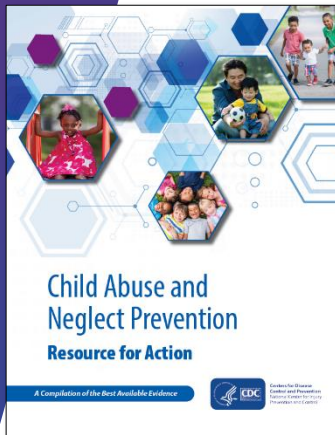
Implementation science is the creation, adoption, use, support and integration of the best available evidence on programs, practices, and policies in real world settings, including 1) research; 2) program evaluation; and 3) dissemination.



Knowledge Translation

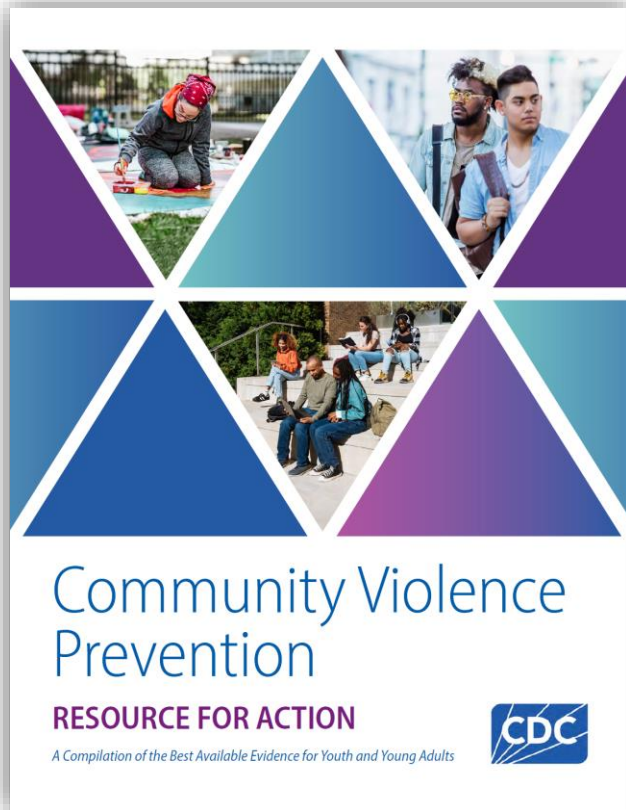
CDC's *Resources for Action*:

Helping States and Communities Take Advantage of the Best Available Evidence



<https://www.cdc.gov/violence-prevention/php/resources-for-action/index.html>

Community Violence Prevention Resource for Action



- Centering communities
- Emphasizing drivers of inequities
- Addressing harmful narratives
- Updating existing examples
- Adding new examples

Implementation Practice Support

Violence Prevention in **PRACTICE**



7 phases in *comprehensive* violence prevention



FEATURES



TIP SHEETS

Downloadable documents that elaborate on specific implementation topics mentioned in each section



TOOLS

include worksheets and checklists, build upon the guidance in each section and can be downloaded for use



STORIES

Brief real-life examples that illustrate the concepts in each section



RESOURCES

Provide a searchable list of links to additional resources and tools



APPROACH SEARCH TOOL

Allows users to search by type of violence or specific strategy



HEALTH EQUITY CONSIDERATIONS

Highlighted throughout using a Health Equity icon in sections where communities can identify and address the needs and challenges of communities that are disproportionately affected by violence

Violence Prevention in **PRACTICE**



STORIES



RESOURCES



APPROACHES

Filter

[Clear All](#)

VIOLENCE TYPE ▼ [Clear](#)

- ☐ Child Abuse and Neglect
- ☐ Youth Violence
- ☐ Suicide
- ☐ Sexual Violence
- ☐ Intimate Partner Violence

STRATEGY ▼ [Clear](#)

- ☐ Promote Social Norms that Protect Against Violence
- ☐ Strengthen Economic Supports
- ☐ Create Protective Environments
- ☐ Promote Quality Education Early in Life
- ☐ Promote Healthy Child Development
- ☐ Teach Skills
- ☐ Engage Influential Adults and Peers
- ☐ Promote Connectedness
- ☐ Provide Opportunities to Empower and Support Girls and Women
- ☐ Disrupt the Developmental Pathways Toward Violence
- ☐ Strengthen Access and Delivery of Suicide Care
- ☐ Identify and Support People at Risk of Suicide
- ☐ Lessen Harms

Program Evaluation

EvaluACTION

[Basics of Evaluation](#) [Preparing for Evaluation](#) [CDC Framework for Evaluation](#)

Evalu**ACTION**

Resources

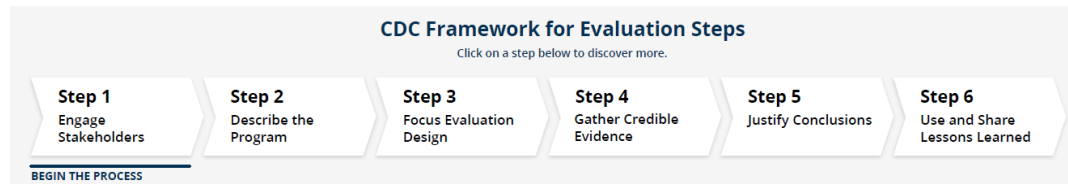
Putting Evaluation to Work

EvaluACTION is designed to walk you through the process of putting together an evaluation plan. It lays out each step of program evaluation and things to consider as you plan and conduct your evaluation.

Download the Evaluation Plan Template so that you can build a plan as you move through the steps of the evaluation framework.

[Download Evaluation Plan Template](#)

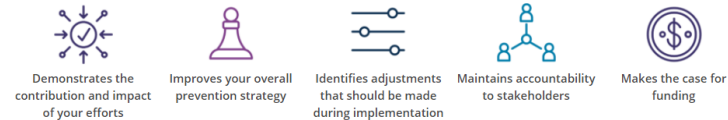
OR download a [Blank Evaluation Plan Template](#)



Why Evaluate?

It is important to evaluate your efforts as a whole, as well as track individual programs, policies, and practices.

Evaluation is important for many reasons:



[Next: Preparing for Evaluation](#)

Evalu**ACTION**

<https://vetoviolence.cdc.gov/apps/evaluation/home>



Implementation Research

Integration into Research Priorities



Identify **factors that influence effective implementation** of TDV and IPV prevention strategies to guide prevention planning and inform more tailored prevention efforts.



Identify factors and approaches that influence **implementation quality, reach, and effectiveness** for existing evidence-based SV prevention approaches.

Opportunities for Implementation Research

FY25 NOFO	Example IS Components
Formative Research of Community-led Primary Prevention Approaches to Address Elevated Risk of Intimate Partner Violence and Sexual Violence	<ul style="list-style-type: none">• Conduct formative and implementation research and pilot evaluation• Actively engage community partners in research and evaluation activities
Rigorously Evaluating Primary Prevention Strategies for Intimate Partner Violence and Sexual Violence	<ul style="list-style-type: none">• Evaluate implementation of approach when possible• Demonstrate active engagement with prevention practitioners• Describe potential for widespread dissemination, implementation, and sustainability
Rigorous Evaluation of Community- and Societal-Level Primary Prevention Approaches to Prevent ACEs	<ul style="list-style-type: none">• Evaluate implementation of approach when possible• Demonstrate significant and meaningful community partnerships to ensure successful implementation• Describe how each partner will participate in the evaluation
Rigorously Evaluating Programs and Policies to Prevent Child Sexual Abuse and Problematic Sexual Behavior among Youth	<ul style="list-style-type: none">• Evaluate implementation of approach when possible• Examine differential effects on subpopulations• Describe potential for widespread dissemination and implementation

Thank you!

The findings and conclusions in this presentation are those of the authors and do not necessarily represent the official position of the Centers for Disease Control and Prevention.