

# Definitions of Disability

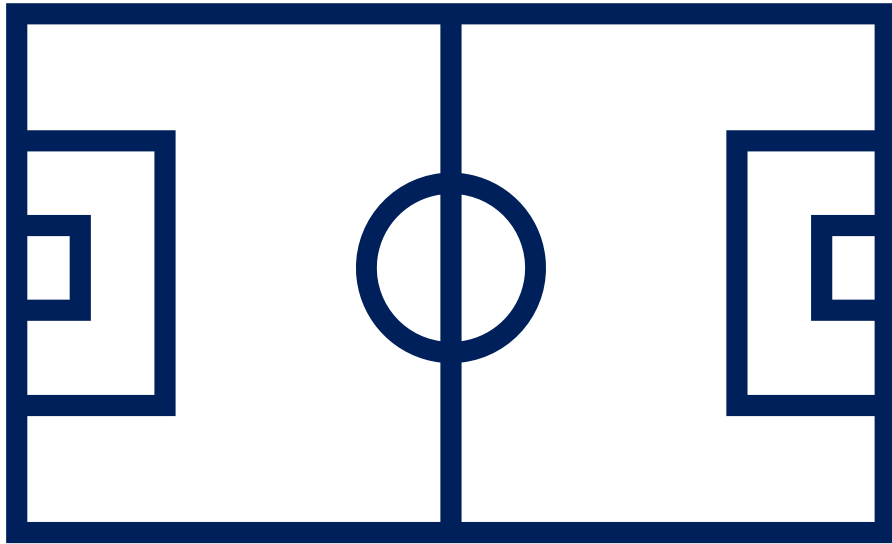
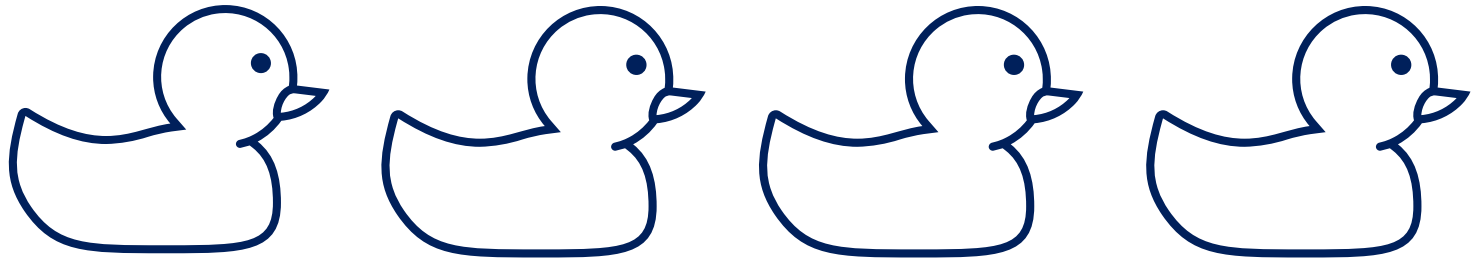
Amy Houtrow, MD, PhD, MPH

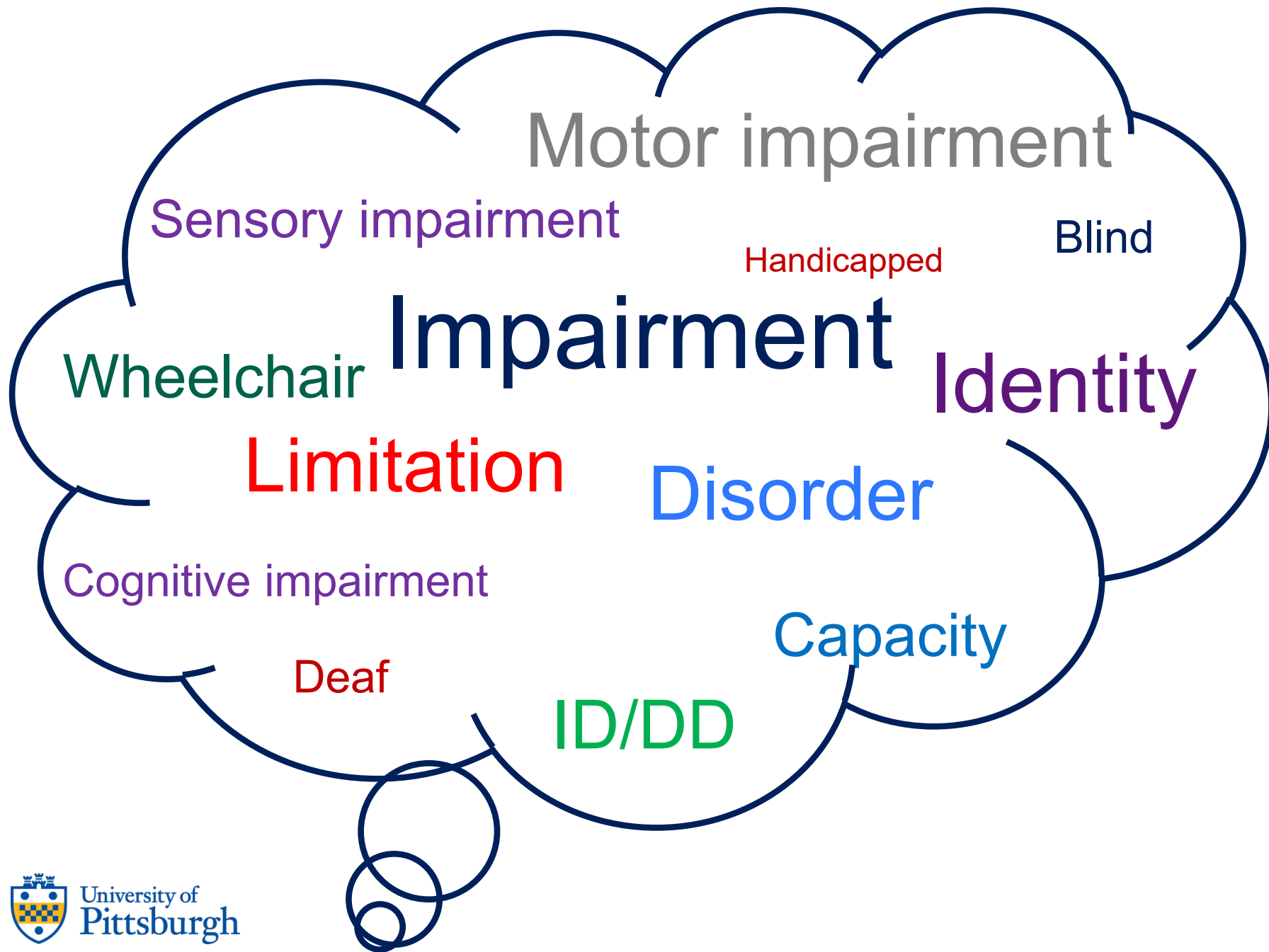
# Disclosures: past 24 months

- NIH –Spina Bifida body mass
- PCORI –direct admissions
- CDC- Spina Bifida Registry
- HRSA -LEND
- PA Dept of Health –care coordination
- FISA –access to care
- LPFCH –equity for multiply marginalized children with disabilities
- DOJ -Olmstead case expert

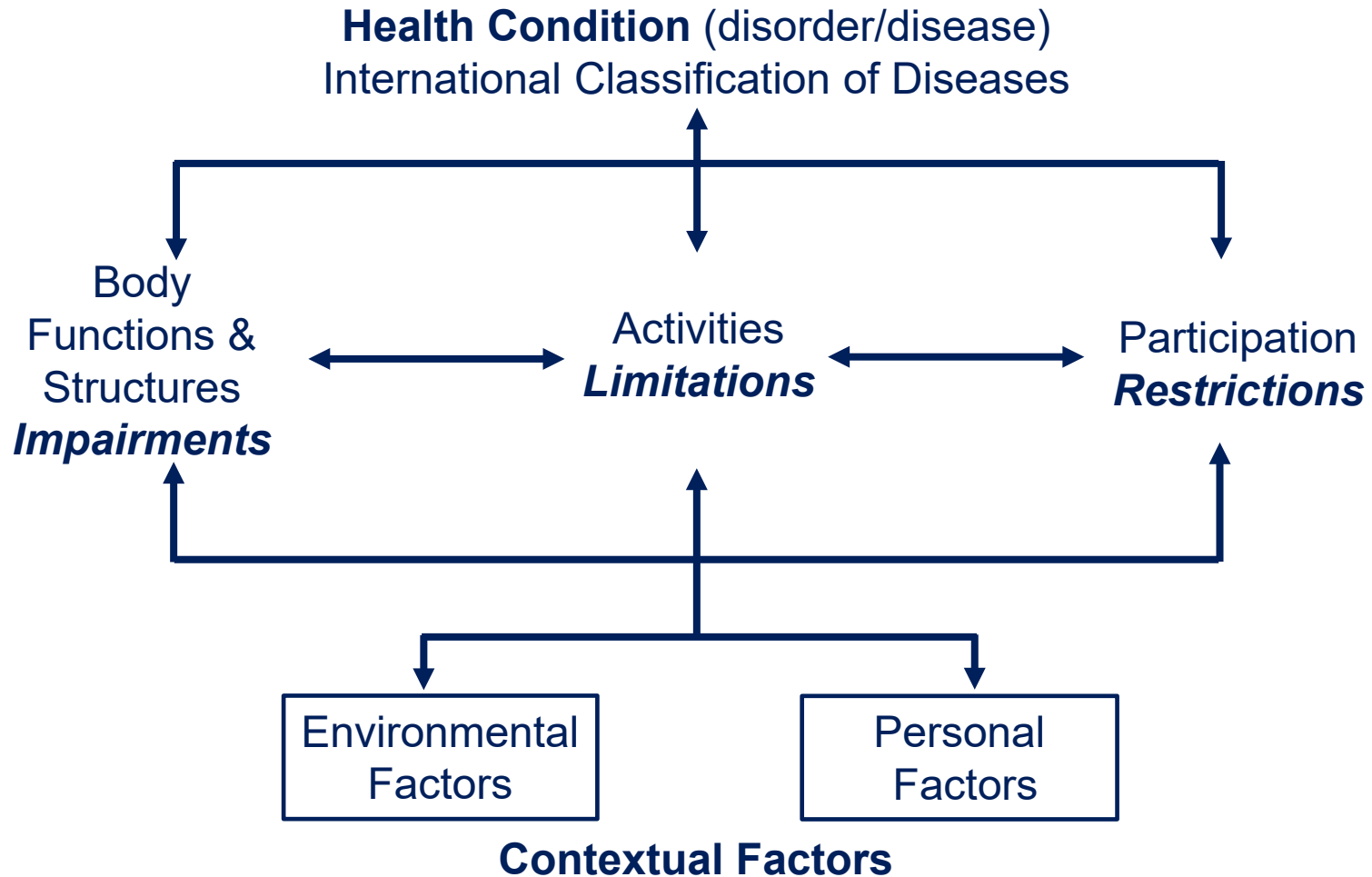
# How I came to this work



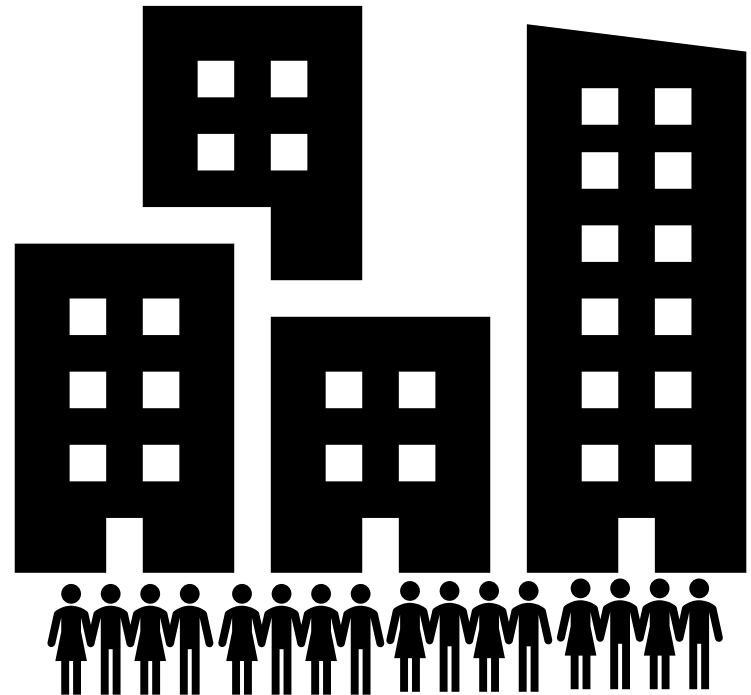




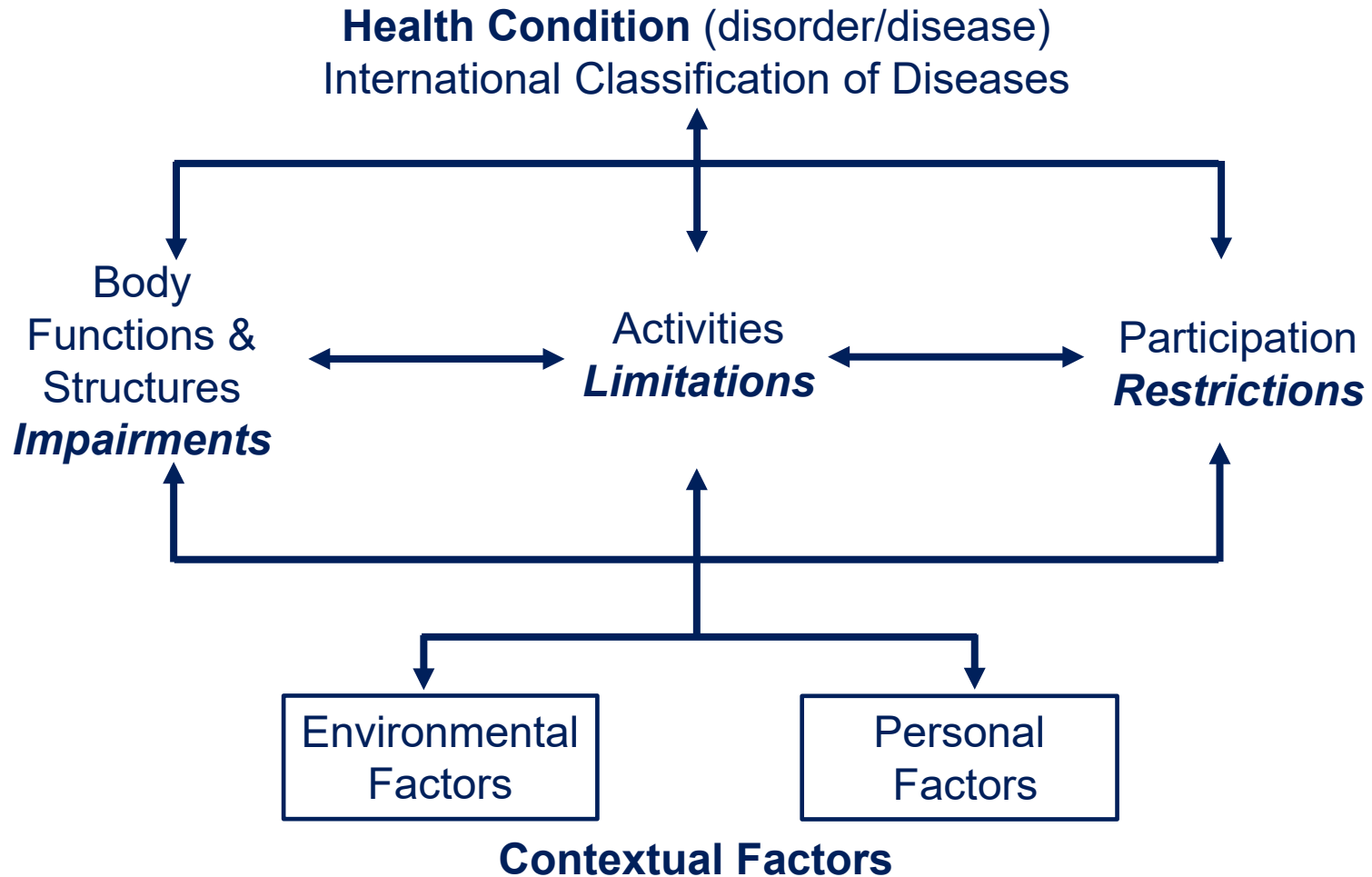
# International Classification of Functioning, Disability and Health



# Medical Model vs Social Model of Disability



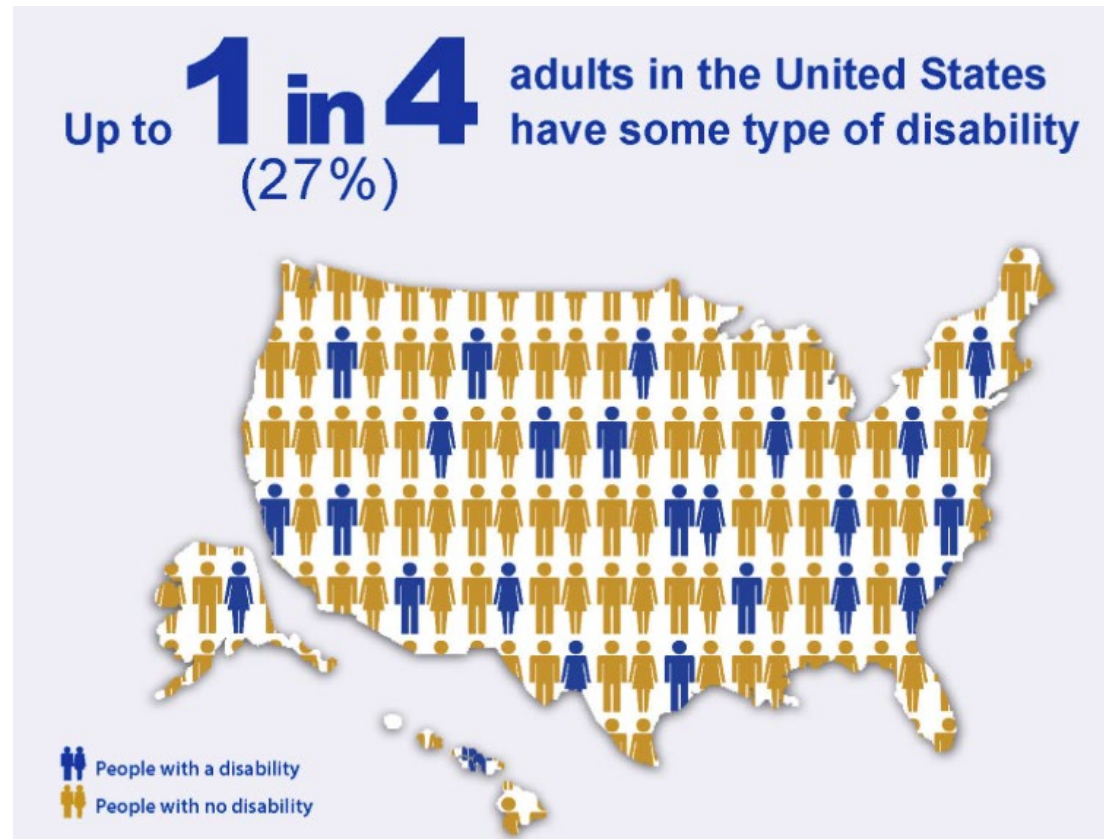
# International Classification of Functioning, Disability and Health





# CDC Definition of Disability

- Any condition of the body or mind (impairment) that makes it more difficult for the person with the condition to do certain activities (activity limitation) and interact with the world around them (participation restrictions).



# ADA Definition of Disability

- An individual with a disability is defined by the ADA as a person who has a physical or mental impairment that substantially limits one or more major life activities,
  - a person who has a history or record of such an impairment,
  - or a person who is perceived by others as having such an impairment

# Social Security Administration

To meet our definition of disability, you must not be able to engage in any substantial gainful activity (SGA) because of a medically determinable physical or mental disability(ies) that is either:

- Expected to result in death.
- Has lasted or is expected to last for a continuous period of at least 12 months.

Impairment  
or Medical  
Condition



Under the law, a child is considered disabled for SSI purposes if:

- he or she has a medically determinable physical or mental impairment (or combination of impairments); and
- the impairment(s) results in marked and severe functional limitations; and
- the impairment(s) has lasted (or is expected to last) for at least one year or to result in death.

# **Domains of activity for assessing a child's functioning**

- Acquiring and using information
- Attending and completing tasks
- Interacting and relating with others
- Moving about and manipulating objects
- Caring for yourself
- Health and physical well-being

# A quick comment about language

## Person First

or

## Identity First

- Intends to shift the focus from the impairment to the social barriers that impede full participation in society as desired
- “I am a woman with disabilities”

- Asserts that disability is a cultural identity
- Can’t separate self from one’s disabilities
- “I am a disabled woman”

# References

- <https://www.who.int/standards/classifications/international-classification-of-functioning-disability-and-health>
- <https://www.cdc.gov/ncbddd/disabilityandhealth/disability.html>
- <https://www.cdc.gov/ncbddd/disabilityandhealth/infographic-disability-impacts-all.html>
- <https://www.ada.gov/resources/disability-rights-guide/#americans-with-disabilities-act-ada>
- <https://www.ssa.gov/redbook/eng/definedisability.htm?tl=0>
- <https://www.ssa.gov/disability/professionals/childhoodssi-pub048>.