

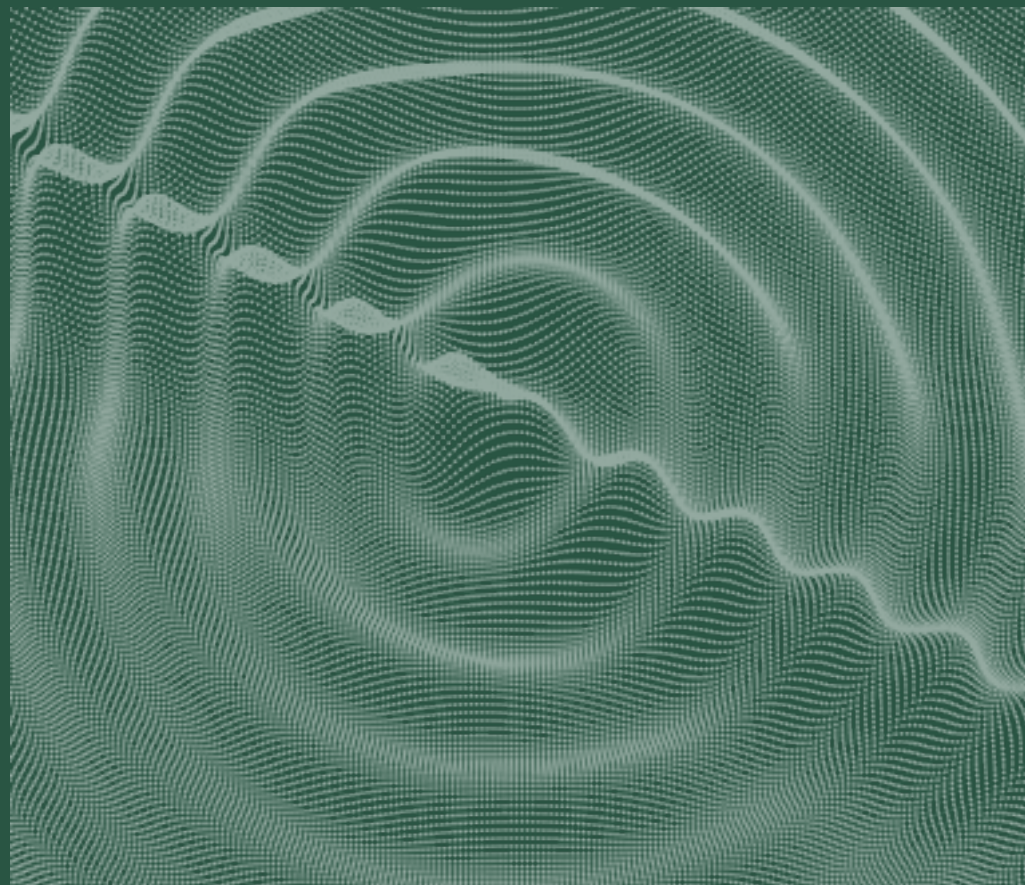


# Data-Driven Decision-Making for MCMs

## AGENDA ↘

---

- Introduction to Palantir
- Palantir in Public Health
- Our Approach
- The Platform



# ↘ Introduction to Palantir

# Introducing Palantir

## Overview

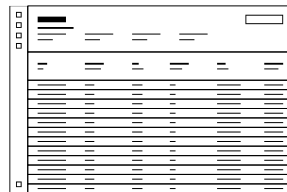
Palantir builds leading software platforms for data-driven operations and decision-making.

We empower institutions to deliver on their mission and duty for the benefit of the people they represent.

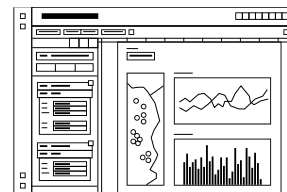
## Our Mission

- Support the world's most critical institutions — in their daily operations and in times of crisis.
- Build data ecosystems that empower users, enhance collaboration, and compound value.
- Preserve fundamental principles of privacy and civil liberties while using data.

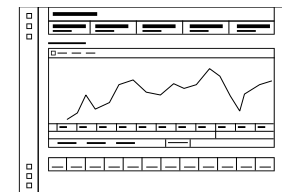
## Platform capabilities



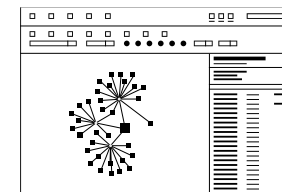
Data Integration,  
Management, & Security



Investigative & Case  
Management Applications



Analytics, Modeling, &  
Exploration



Operational Decision-  
Making Applications

## Our Health Clients Include

| NIH

| HHS

| FAA

| NHS (UK)

| MD ANDERSON

| FDA

| CDC

| ASPR

| CLEVELAND CLINIC

| TAMPA GENERAL HOSPITAL

| VA

| PEPFAR

| USDA

| MERCK



US agencies like ASPR, HHS, and CDC coordinated their COVID-19 pandemic responses using Palantir and have scaled those investments to dozens of additional public health events and emergencies.



Researchers are bringing together massive-scale real-world electronic health record (EHR) data in Palantir from across dozens of NIH-backed research institutions to better understand COVID-19.



The U.S. Army is using Palantir to monitor and enhance its global force readiness.

TECH

## Inside the HHS system informing White House coronavirus decisions

SCIENCE

## THE AMBITIOUS EFFORT TO PIECE TOGETHER AMERICA'S FRAGMENTED HEALTH DATA

*The infrastructure could help fight the next pandemic*

By Nicole Wettsman | Oct 19, 2020, 9:10am EDT

## New Army intelligence system in the works for Middle East operations

◆ WSJ NEWS EXCLUSIVE | BUSINESS

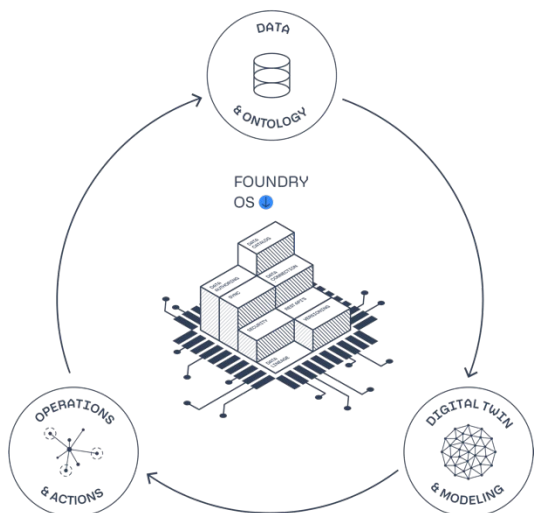
## Palantir to Help U.S. Track Covid-19 Vaccines

Data-mining company is developing a tool that health authorities plan to use to monitor the manufacture of coronavirus vaccines and determine where they should go



## Overview

Our platform enables collaborative workflows for multi-partner health efforts while protecting information. Critically, our software drives public health impact by connecting data to action-oriented decisions, and supports rapid reusability of workflows for the future.



## Key Partnerships + Impact

- Disease **surveillance**, outbreak **response**, and **resource allocation** at CDC/HHS
- Public-private data sharing via **supply chain** control tower at ASPR
- **Streamlined hospital operations** at Cleveland Clinic, Tampa General, MD Anderson
- **Budget** and **human resource efficiencies** at HHS
- **Regulatory oversight** and **food supply chain resiliency** at FDA
- **Animal health surveillance** at USDA
- **Real-world COVID-19 research** and **precision oncology** at NIH
- **Data-driven care** and operations at VHA
- Emergency **resource delivery management** at the World Food Programme (WFP)
- **Clinical trial site selection** and **cell line development** for life science organizations

# Palantir Approach & Key Takeaways

## Making fast, data-driven decisions requires:

- **Data for more than dashboards:** There are plenty of analytics and visualization tools, but the key to accelerating outcomes is operational, decision-making use cases.
- **Ecosystem approach:** Particularly in the context of medical countermeasure orchestration, there is immense value to a single platform with federal agencies, commercial distributors, manufacturers, jurisdictions, providers, and other key parties on board.
- **Meeting organizations where they are on their modernization journey:** Foundry offers 100+ adapters for flexible data integration into a single source of truth, dedicated data quality tooling, and is cloud/infrastructure-agnostic.
- **Flexibility to adjust security & governance:** By providing a set of point-and-click tools for role-, purpose-, and classification-based access controls, Foundry has been able to meet the needs of the constantly-evolving MCM landscape.

