

## **SPEAKERS**



**ANDREW ANDERSON**, Ph.D, studies the role of payment policies in shaping healthcare access and outcomes, particularly for groups facing disproportionate health risks. Before joining Johns Hopkins, Andrew was an assistant professor at Tulane University, research scientist and Phyllis Torda Health Care Quality Fellow at the National Committee for Quality Assurance (NCQA), and director of quality measurement at the National Quality Forum (NQF). Andrew earned a Ph.D. in health services research from the University of Maryland, College Park



**ANITRA D. BEASLEY**, MD, MPH, is an Associate Professor in the Department of Obstetrics and Gynecology at Baylor College of Medicine. She serves as Assistant Dean of Academic and Faculty Affairs at Ben Taub Hospital and Director of the Ryan Residency Training Program in Family Planning and Director of Faculty Development within her department. She additionally provides care at Planned Parenthood Gulf Coast where she serves as the Medical Director and is the President-Elect for the Society of Family Planning. She earned her medical degree and completed her residency in obstetrics and gynecology at Baylor College of Medicine. Her advanced training includes a complex family planning fellowship and a Master of Public Health with a concentration in epidemiology at Columbia University. Dr. Beasley is a diplomate of the American Board of Obstetrics and Gynecology and is a Fellow in the American College of Obstetricians and Gynecologists. She specializes in general

obstetrics and gynecology and complex family planning. Her academic and advocacy interests include contraception management for people with complex medical issues, reproductive justice, and comprehensive reproductive healthcare. She maintains a clinical practice in the Harris Health System and is dedicated to providing access to comprehensive and quality healthcare to all residents of Houston and Harris County.



**CLAIRE D. BRINDIS**, DrPH, MPH, is a Distinguished Emerita Professor of Pediatrics and Health Policy, Department of Pediatrics and Department of Obstetrics, Gynecology and Reproductive Health Sciences and Emerita Director of the Philip R. Lee Institute for Health Policy Studies at the University of California, San Francisco (UCSF). Dr. Brindis is also the Co-Director of the Adolescent and Young Adult Health National Resource Center. She is also a Founding Director of the Bixby Center for Global Reproductive Health in the Department of Obstetrics, Gynecology and Reproductive Sciences and IHPS, UCSF. Incorporating a variety of quantitative and qualitative methodologies, as well as community participatory research, Dr. Brindis' research

focuses on program evaluation and the translation of research into policy at the local, state, and national level. As a bilingual, bi-cultural researcher, Dr. Brindis' research and personal commitment focus on ameliorating the impact of social, health, and economic disparities among ethnic/racial populations, with a particular focus on women, young adults, and adolescents and reproductive health. For example, in the area of reproductive health, Dr. Brindis led a multidisciplinary evaluation team evaluating California's Office of Family Planning's Family PACT program, a Federal 1115 Medicaid waiver. Evaluation findings indicate that this program has successfully served annually nearly 1.3 million women and men, helping to avert approximately 300,000 pregnancies per year annually. Dr. Brindis has served on many expert panels, including the Institute of Medicine (IOM) Committee on Pediatric Health and Health Care Quality Measures, the Committee on Preventive Services for Women, the Committee on the Health and Well-Being of Young Adults, and the Committee on Neurobiological and Social- Behavioral Research on Adolescent Health. At UCSF, she is past chair of the Chancellor's Advisory Committee on the Status of Women. She currently serves as the Chair of the National Academies Standing Committee on Reproductive Health, Equity, and Society.



**ALISON GEMMILL**, PhD, MPH, Alison Gemmill is an Assistant Professor in the Department of Population, Family and Reproductive Health at Johns Hopkins Bloomberg School of Public Health. She is a trained demographer with primary interests in fertility; maternal, perinatal, and reproductive health; and life course and aging. She received her PhD in Demography from UC Berkeley in 2017 and her MPH in Maternal and Child Health from UC Berkeley in 2011. Prior to graduate school, she worked as a research assistant for the Guttmacher Institute in New York. Her most recent work examines recent declines in U.S. fertility, how women's risk preferences and perceptions impact reproductive health behaviors and outcomes, and the relationship between macrosocial stressors and perinatal health. Dr. Gemmill is also involved in several projects aimed to improve measurement and monitoring of global population health indicators, including an ongoing collaboration with the UN Maternal Mortality Estimation Inter-Agency Group. She is a former NICHD and NIA predoctoral fellow in demography and has

published lead- authored and collaborative work in journals such as Proceedings of the National Academy of Sciences, Lancet, Lancet Global Health, Demography, Population and Development Review, and Health Affairs.



**CAITLIN GERDTS, PhD, MHS**, Leads the development and implementation of Ibis's research agenda, and serves on the Senior Management Team. Dr. Gerdtz is an epidemiologist by training and has contributed to the field of global reproductive health, rights, and justice through collaborative work on novel research methods; working alongside activists to document the safety and effectiveness of feminist abortion-accompaniment models for self-managed medication abortion (SMA) throughout pregnancy; championing the next generation of activist-researchers; and collaborating across movements in the US to develop user-centered technology innovations that expand inclusive, private, and secure access to comprehensive

reproductive health information and care. Dr. Gerdtz contributed to the Studying Accompaniment Feasibility and Effectiveness (SAFE) study—the researcher-activist collaboration which demonstrated that SMA with support from non-clinically trained abortion-accompaniers is as effective as clinician-managed medication abortion. Caitlin also served as a member of the Guidelines Development Group for the 2022 World Health Organization Abortion Care Guideline, which, relying on evidence from abortion-accompaniment groups (among others) fully recommends SMA through 12 weeks gestation, and includes non-clinically trained community health-workers as recommended providers for medication abortion. Dr. Gerdtz' collaborative efforts to ensure access to inclusive, person-centered abortion care across settings and models are especially critical in the US as attacks on abortion continue to push clinic-based care out of reach for so many; abortion seekers and those who support them face criminalization disproportionately among those with marginalized identities; and mounting attacks on medication abortion spur the need for broader incorporation of misoprostol-only regimens to expand abortion access for all people. Caitlin has authored/co-authored more than 100 peer reviewed publications, and is the recipient of the 2023 Society for Family Planning Lifetime Achievement Award. Dr. Gerdtz received her undergraduate degree in Human Biology from Stanford University; a Masters in Health Sciences (MHS) in Population, Family, and Reproductive Health from the Johns Hopkins Bloomberg School of Public Health; and a PhD in Epidemiology from the University of California, Berkeley.



**ANU MANCHIKANNTI GOMEZ, PhD**, is a scholar of sexual and reproductive health equity who uses participatory and engaged approaches to produce knowledge that centers the communities most affected by reproductive oppression. As an Associate Professor at the University of California, Berkeley School of Social Welfare and the director of the Sexual Health and Reproductive Equity Program, she has a long track record of conducting innovative and rigorous research that puts reproductive justice into practice and that has affected programs, policy, and practice. Her ongoing projects focus on advancing birth equity and contraceptive access. Dr. Gómez is co-PI of the evaluation of the Abundant Birth Project (ABP), the first guaranteed income program for pregnant people in the United States. Initially a pilot program in San Francisco launched by Expecting Justice, ABP has now expanded to 5 California counties. The evaluation seeks to identify the impact of unconditional income supplementation on adverse pregnancy outcomes, maternal mental



health, and infant development among Black-identified program participants. Dr. Gómez is also currently leading a project focused on contraceptive misinformation—documenting its presence on TikTok, understanding how it affects young people, and developing strategies to disrupt it. Other recently completed projects include a national, stakeholder-engaged effort to advance person-centered metrics of contraceptive access and a participatory study of facilitators and barriers of implementing pharmacist-prescribed contraception in rural California.



**MICHELE BRATCHER GOODWIN, JD, LLM** is the Linda D. & Timothy J. O'Neill Professor of Constitutional Law and Global Health Policy and Co-Faculty Director of the O'Neill Institute for National and Global Health Law. Dr. Goodwin is one of the most cited health law scholars in the world and a highly regarded public intellectual with commentaries appearing in the *NY Times*, *Washington Post*, *The Atlantic*, *The Nation*, the *L.A. Times*, *Newsweek*, *Ms. magazine* and other publications. She has testified before state and federal legislators on matters of health and reproductive justice. Dr. Goodwin is the author of six books and over 100 articles and commentaries on matters of law, medicine, reproductive health, and biotechnologies. She is the 2022 recipient of the American Bar Association's Margaret Brent Award and in 2023 she was honored by the California Women's Law Center with their prestigious Pursuit of Justice Award. Dr. Goodwin is author of the award-winning book, *Policing The Womb: Invisible Women and The Criminalization of Motherhood*.



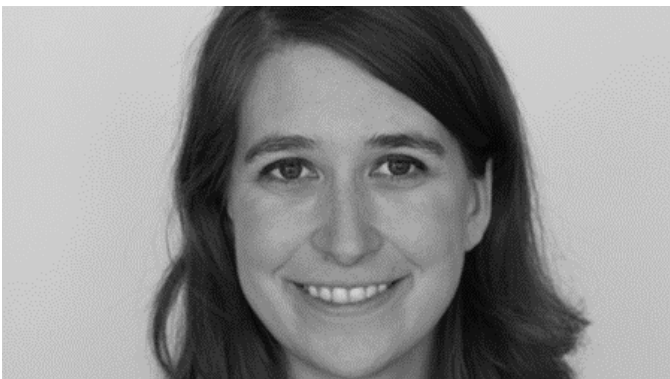
**TIFFANY GREEN, PhD** Tiffany Green is Associate Professor of Obstetrics and Gynecology and Population Health Sciences and Obstetrics and Gynecology and the Gloria E. Sarto, MD, PhD, Chair in Women's Health and Health Equity Research at the University of Wisconsin-Madison, where she directs the Reproductive Equity Action Lab (REAL). She earned her Ph.D. in economics from the University of North Carolina at Chapel Hill and a B.A. in economics from Florida A&M University. She is a nationally recognized economist, population health scientist, and science communicator whose mission is to reduce and

eliminate racial/ethnic inequities in reproductive health. Her primary research agenda is motivated by a persistent unsolved puzzle: how and why Black people experience the worst reproductive health access and outcomes of any racial/ethnic group—and what innovative solutions might ameliorate these persistent inequities. She serves as Co-Principal Investigator of the Reproductive Health Experiences and Access Survey, a national survey of 48,000 individuals examining access to abortion, contraception, and other forms of reproductive healthcare in the post-Dobbs era. Dr. Green also investigates the impacts of Birth Cost Recovery, a state policy allowing Wisconsin counties to recoup Medicaid birthing costs from unwed non-birthing parents/fathers on family wellbeing. Dr. Green is committed to training the next generation

of physicians to understand and practice medicine through the lenses of reproductive equity and justice. She developed “Race in American Obstetrics and Gynecology”, one of the first US medical education courses to address the role of race in the development of American obstetrics and gynecology as well as “Abortion in Wisconsin and Beyond: Exploring Medical, Public Health, and Social Science Perspectives”. Dr. Green is dedicated to making complex issues accessible to policymakers, the lay public, and the next generation of clinicians and researchers. She has used her expertise to promote evidence-based policy through legislative testimony and has provided interviews for numerous local and national media outlets on reproductive equity and the racial/ethnic inequities heightened by the ongoing COVID-19 pandemic. She also serves on the Wisconsin Maternal Mortality Review Team and as co-chair of the Wisconsin Maternal Health Innovation Task Force. Dr. Green’s deepest wish is that her work can help bring about reproductive autonomy and freedom so that every human can reach their highest potential.



**ASHA HASSAN, PhD, MPH** is an Assistant Professor at the University of Minnesota Medical School in the Department of Obstetrics, Gynecology, and Women's Health. A health services researcher and medical sociologist, her research focuses on conceptualizing structural racism's relationship to family planning access, provision, and decision-making, understanding police violence as a manifestation of structural racism and its impacts on reproductive health, and assessing the intersections of disability and reproductive justice in clinical policy.



**LEE HASSELBACHER, JD** is a senior policy researcher at The Center for Interdisciplinary Inquiry and Innovation in Sexual and Reproductive Health (Ci3) at The University of Chicago. Lee leads Ci3’s reproductive health policy research, collecting data and translating research to inform policy debates and legislation. She collaborates with health providers, advocates, and UChicago researchers to achieve evidence-based policy reform. Her policy-related research covers topics such as access to contraception and

abortion, health care reform, religious refusals in health care, and consent and confidentiality for young people. Lee specializes in qualitative research to uncover the practical impact of laws and policies on equitable access to reproductive health care. Lee is a graduate of Northwestern Pritzker School of Law, where she focused on law and social policy, and the University of Wisconsin-Madison. She previously worked for Human Rights Watch and served as a law clerk with the ACLU of Illinois’ Reproductive Rights Program and the Center for Reproductive Rights



**JAKE LAPERRUQUE, JD** is Deputy Director of CDT's Security and Surveillance Project. Prior to joining CDT, Jake worked as Senior Counsel at the Constitution Project at the Project On Government Oversight. He also previously served as a Program Fellow at the Open Technology Institute, and a Law Clerk on the Senate Subcommittee on Privacy, Technology, and the Law. Jake is a graduate of Harvard Law School and Washington University in St. Louis.



**JUSTIN R. LAPPEN, MD** is the Division Director of Maternal Fetal Medicine (MFM) and Associate Professor of Reproductive Biology at Cleveland Clinic Lerner College of Medicine, Case Western Reserve University. Dr. Lappen received a Bachelor of Arts in Mathematics from Columbia University and his Medical Degree from the Johns Hopkins University School of Medicine. He completed residency training in Obstetrics and Gynecology at Prentice Women's Hospital, Northwestern University and fellowship in MFM at MetroHealth Medical Center, Case Western Reserve University School of Medicine. Dr. Lappen is a nationally recognized for his work in expanding the provision of comprehensive reproductive health care, including contraception and abortion, within MFM to reduce pregnancy-associated morbidity and mortality. He is the current chair for the Society for Maternal Fetal Medicine (SMFM)

Reproductive Health Committee, which provides national guidance to MFM physicians to enhance engagement, knowledge, institutional advocacy, and leadership in reproductive health care within MFM practice. He directed the Cleveland Clinic institutional response and informed the state-wide approach to care in Ohio following the Dobbs decision. In addition, Dr. Lappen has clinical and research expertise at the intersection of obstetrics and critical care medicine, including in maternal cardiac disease in pregnancy. He is the site principal investigator for the Maternal Fetal Medicine Units Network, a national multicenter research consortium supported by the Eunice Kennedy Shriver National Institute of Child Health and Human Development. Dr. Lappen is a funded principal investigator for a state-wide quality improvement initiative in Ohio to reduce maternal morbidity/mortality and health disparities related to hypertensive disorders of pregnancy. He has served on national committees including the National Partnership for Maternal Safety Committee on Vital Sign Triggers and the SMFM Publications Committee, which publishes national clinical guidelines for MFM physicians. Dr. Lappen has numerous peer-reviewed publications in major medical journals, and he has



received multiple research and teaching awards.



**CYNTHIA LEBRON**, PhD, MPH is an Assistant Professor at the School of Nursing and Health Sciences at the University of Miami. Her research focus lies at the intersection of racial/ ethnic health disparities in obesity and maternal and child health. Examples include studies dedicated to learning more about the influence of baby-friendly hospitals, and infant and maternal mortality in Latinas. The National Heart, Lung, and Blood Institute (NHLBI) currently funds her on a K01 to develop an early childhood obesity intervention targeting Hispanic mothers and grandmothers. She was selected to participate in the Society for Prevention Research's Early Career Prevention Scientist Training Program, the NHLBI's Program to Increase Diversity Among Individuals Engaged in Health-Related Research (PRIDE) Cardiovascular Disease, Cardiovascular Disease, and the National Institute of Minority Health and Health Disparities' Health Disparities Research Institute. She is serving in her second term as the President of American Public Health Association (APHA)'s Latino Caucus for Public Health where they support

members with job opportunities, webinars, a podcast, as well as hold space to disseminate findings in Latino health at the APHA annual meeting. She is also currently serving as a Guest Editor of AJPH's special issue on Latino/Hispanic Health Issues. She is a dedicated community researcher serving on local boards, BreastfeedMIAMI and the WIC advisory board. Lebron teaches public health and nursing students and is dedicated to providing high-quality mentorship and resources to prepare a new generation of health disparities researchers. serving in her second term as the President of American Public Health Association (APHA)'s Latino Caucus for Public Health where they support members with job opportunities, webinars, a podcast, as well as hold space to disseminate findings in Latino health at the APHA annual meeting. She is also currently serving as a Guest Editor of AJPH's special issue on Latino/Hispanic Health Issues. She is a dedicated community researcher serving on local boards, BreastfeedMIAMI and the WIC advisory board. Lebron teaches public health and nursing students and is dedicated to providing high-quality mentorship and resources to prepare a new generation of health disparities researchers.



**LAURA LINDBERG**, PhD is a professor in the Department of Urban-Global Public Health at the Rutgers School of Public Health. Prior to joining Rutgers, Dr. Lindberg was a Principal Research Scientist at the Guttmacher Institute for nearly two decades and held research positions at the Urban Institute and Abt Associates. Dr. Lindberg has authored more than 100 peer-reviewed articles, monographs, reports, and book chapters. She has extensive experience communicating public health research to policymakers, health care providers, and the public. Her research is widely featured in news outlets, including the *New York Times*, *Washington Post*, *A Today Show*, *National Public Radio* and the *Wall Street Journal*. She holds a doctorate in sociology from the University of Michigan and a bachelor's degree in public affairs from Princeton University.



**HEIDI MOSESON**, PhD, MPH is an Scientist at Ibis Reproductive Health. Dr. Moseson is an NICHD and NCI funded researcher who studies methods of improving sexual and reproductive health data quality and accuracy overall, with a focus on transgender and gender diverse people. Dr. Moseson is preparing to launch a five-year update of a national study of the sexual and reproductive health needs and experiences, particularly abortion care, of transgender and gender diverse people in the United States. Dr. Moseson completed her doctorate in epidemiology at UCSF, her masters in epidemiology and biostatistics at UC Berkeley, and her undergraduate degree at Stanford University.



**CAITLIN MYERS**, PhD is the John G. McCullough Professor of Economics at Middlebury College. She primarily teaches courses on statistics, regression analysis, and causal inference, and her scholarship applies these tools to identify and measure the causal effects of reproductive policy on people's lives. Professor Myers work has been published in top academic journals in her field and has been featured by news outlets including The New York Times, The New Yorker, Marketplace, Nature, and the Washington Post.



**JENNIFER O'DONNELL**, Sc.D is the Senior Director of Research and Evaluation at the Society of Family Planning and a Lecturer in the Department of Women's and Gender Studies at Wellesley College. The Society of Family Planning is an academic society for over 1,800 researchers and clinicians contributing to the science and medicine of abortion and contraception, as well as the academic home of the Complex Family Planning fellowship, an accredited OB-GYN subspecialty. At the Society, Jenny leads research-related strategies responsive to a shifting landscape and in service of the vision of just and equitable abortion and contraception informed by science. This work includes #WeCount, a collaborative monitoring effort capturing abortion volume before and after the



Dobbs ruling, as well as the Society's competitive research funding on abortion and contraception in the US.



**JANE SEYMOUR**, PhD, MPH is an epidemiologist and abortion researcher. Her goal as a scholar is to use epidemiologic causal inference and geographic information systems methods to answer policy- and practice-relevant questions to improve reproductive health and wellbeing. At CORE, she manages a portfolio of work focused on ways to expand reproductive equity, including by improving the measurement of abortion access, rigorously evaluating abortion preferences, and implementing novel methods to measure abortion care consideration and seeking trajectories in the post-and seeking trajectories in the post-Dobbs landscape. Seymour received her PhD in Epidemiology from Boston University School of

Public Health, MPH from the University of Pennsylvania, and BA from Haverford College.



**LISA SIMPSON**, M.B., B.Ch., M.P.H., FAAP is currently an Impact Fellow at the University of California, Berkeley School of Public Health, as well as an adjunct professor at the University of South Florida School of Public Health and the Milken Institute School of Public Health at George Washington University. A nationally recognized health policy researcher and pediatrician, she is a passionate advocate for the translation of research into policy and practice. Her research, and over 120 articles and commentaries in peer reviewed journals, focuses on the role of evidence and data to improve health and healthcare, particularly for children and marginalized populations. Most recently, Dr. Simpson was the President and CEO of

AcademyHealth from 2011 to 2024. Previously, she spent eight years as a professor of pediatrics, first as an Endowed Chair in Child Health Policy at the University of South Florida and then as the Director of the Child Policy Research Center at Cincinnati Children's Hospital Medical Center and the University of Cincinnati. She served as the Deputy Director of the Agency for Healthcare Research and Quality from 1996 to 2002. Dr. Simpson serves on the Editorial Board of Healthcare: the Journal of Delivery Science and Innovation and on several national and international advisory boards. In October 2013, Dr. Simpson was elected to the National Academy of Medicine (formerly the Institute of Medicine) and was awarded an honorary Doctor of Science degree by the Georgetown University School of Nursing and Health Studies. Dr. Simpson earned her undergraduate and medical degrees at Trinity College in Dublin, Ireland, a master's of public health at the University of Hawaii and completed a post-doctoral fellowship in health services research and health policy at the University of California, San Francisco.



**ANGAD SINGH, MD** is a practicing Family Medicine physician and Clinical Assistant Professor at the University of Washington in the Departments of Family Medicine and Biomedical Informatics & Medical Education. Board certified in Clinical Informatics, he serves as Associate Chief Clinical Information Officer (CCIO) for Ambulatory Care & Health Equity for UW Medicine. His expertise includes implementation science, reproductive health care access, digital health tools, and data-driven health equity. Dr. Singh is trained in the practice of full-spectrum care and, in 2023, led the design and implementation of Washington state's first fully virtual abortion access program. He also co-chairs UW Medicine's Social Drivers of Health workgroup. Dr. Singh is the recipient of the 2024 David B. Thorud Leadership Award, the highest leadership honor awarded annually to one faculty member at the

University of Washington.



**AMANDA J. STEVENSON, PhD** is a demographer and sociologist at the University of Colorado Boulder, where she is an Assistant Professor of Sociology and Director of the Program on Population at the Institute of Behavioral Science. She studies the impacts of and responses to abortion and family planning policy. Her demographic estimates of the maternal mortality impact of banning abortion have been widely cited and she produced the first contemporary causal evidence that access to contraception improves women's socioeconomic lives. At Boulder she leads the Colorado Fertility

Project, a team using massive restricted-access administrative data at the Census Bureau to evaluate the life course consequences of access to (as opposed to use of) highly effective contraception. With funding from the Eunice Kennedy Shriver National Institute of Child Health and Human Development (NICHD) and the William and Flora Hewlett Foundation, the team has developed an individual-level longitudinal dataset, Reproduction in People's Lives (RIPL), describing the demographic life course of nearly all US residents 2007-2022. Her analyses of the impact of reproductive health policies have appeared in the New England Journal of Medicine, Science Advances, the American Journal of Public Health, Obstetrics and Gynecology, and the journal Contraception. She translates her results into policy-relevant findings for non-academic audiences. For example, she holds webinars and briefings for journalists, regularly testifies on the demographic impacts of legislation, and developed an app to disseminate local impact estimates from her policy evaluation work. Her research has been cited by the United States Supreme Court and leading media outlets.





**MAY SUDHINARASET, PhD**, is Professor and Vice Chair at the University of California, Los Angeles (UCLA). She is a public health expert specializing in the social determinants of health and health inequities. Her research focuses on understanding the structural factors that contribute to reproductive, maternal, neonatal, child health (RMNCH) inequities, particularly within marginalized populations in the US and globally. Dr. Sudhinaraset combines rigorous, theory-driven mixed-methodologies with a commitment to social justice, aiming to inform policies that address systemic barriers to healthcare access and promote person-centered reproductive health equity. She has developed a number of widely used person-centered care measures across maternity care, abortion, and contraceptive services and has advanced theoretical approaches to examining quality of sexual and reproductive healthcare. Her interdisciplinary work bridges public health, social science, and policy, contributing to evidence-based solutions for advancing equitable health systems.



**TRACY WEITZ, PhD, MPA** is a senior fellow with the Women's Initiative at American Progress. Weitz is a national expert on abortion care, policy, culture, and politics in the United States. She is currently a professor of sociology and director for the Center on Health, Risk, and Society at American University in Washington, D.C. From 2014 to 2021, she served as the U.S. programs director for the Susan Thompson Buffett Foundation in Omaha, Nebraska. Prior to joining the foundation, from 2003 to 2013 as faculty in the Department of Obstetrics, Gynecology and Reproductive Sciences at the University of California San Francisco (UCSF), Weitz co-founded and directed the Advancing New Standards in Reproductive Health research program. While at UCSF, she also served as the founding executive director for the UCSF National Center of Excellence in Women's Health in 1996, designated through a competitive award from

the U.S. Department of Health and Human Services. Weitz has a bachelor's degree in political science from the University of California, Berkeley, a master's degree in public administration with an emphasis in health care from Missouri State University, and a doctoral degree in sociology from UCSF. Among her honors is the 2012 UCSF Academic Senate Distinction in Mentoring Award; the 2013 Steinem-Waters Legacy Award from Choice USA, now Unite for Reproductive and Gender Equity; the 2014 Irvin M. Cushner Award from the Association of Reproductive Health Professionals; the 2021 Charles S. Schultz Lifetime Achievement Award and the 2008 Felicia Stewart Advocacy Award from the Sexual and Reproductive Health Section of the American Public Health Association; and the 2015 Roger Baldwin Civil Libertarian of the Year Award from the American Civil Liberties Union – Nebraska for



challenging the Nebraska ban on same-sex marriage. Weitz is a deputy editor for *Perspectives on Sexual and Reproductive Health* and on the editorial board of *Contraception*.