



Introductory comments

Stan Gerson MD

Dean, CWRU School of Medicine



CASE WESTERN RESERVE
UNIVERSITY
School of Medicine

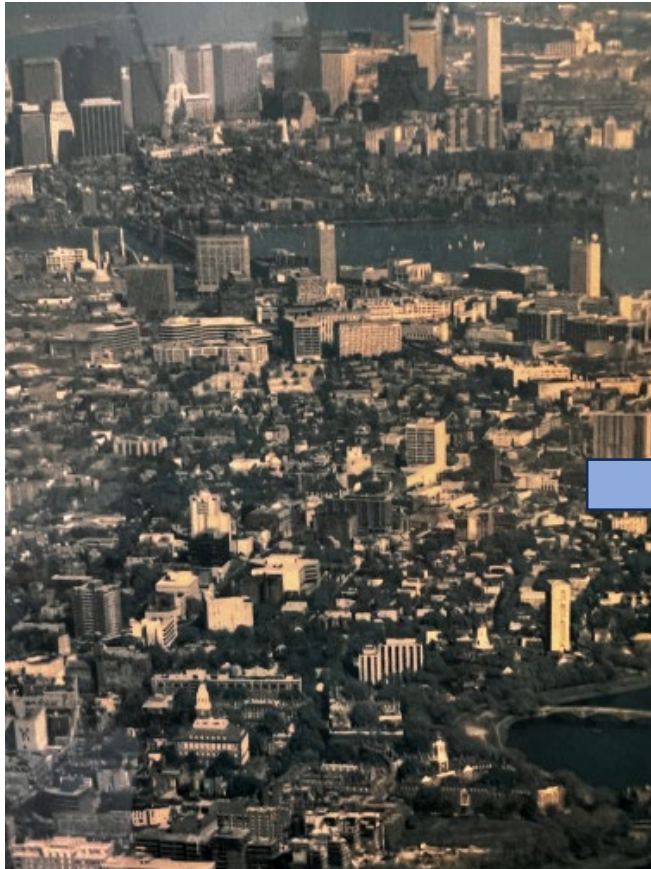


How might we connect the “drivers” of the
biological causes and consequences of cancer
to
the “drivers” of social determinants of health



A little bit about me: Social distress in cities

Boston



1951-1977

Harvard Magazine

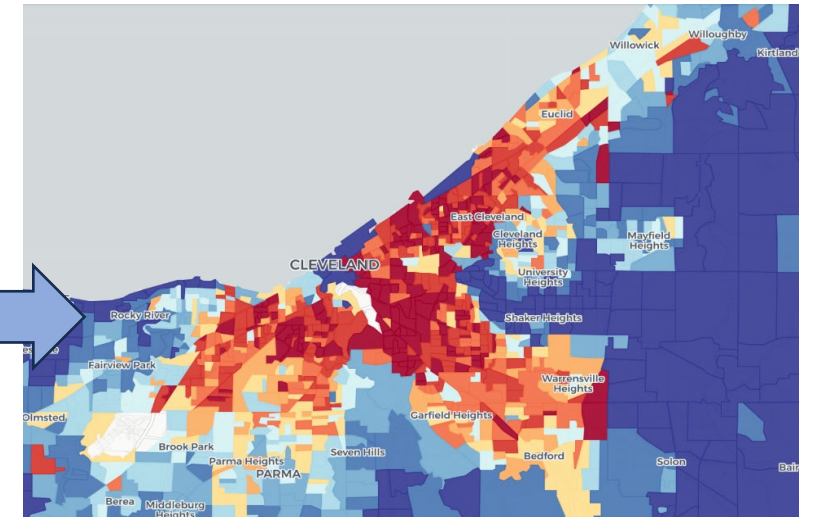
Philadelphia



1977-1983

“Move” Bombing
Bettmann Archive

Cleveland



1983-2024

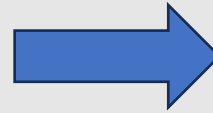
Center for Health Disparities Research



CASE WESTERN RESERVE
UNIVERSITY
School of Medicine

Sam Broder, NCI Director: “Poverty is a carcinogen”, 1989

Cleveland Housing Management Authority 1988-2024



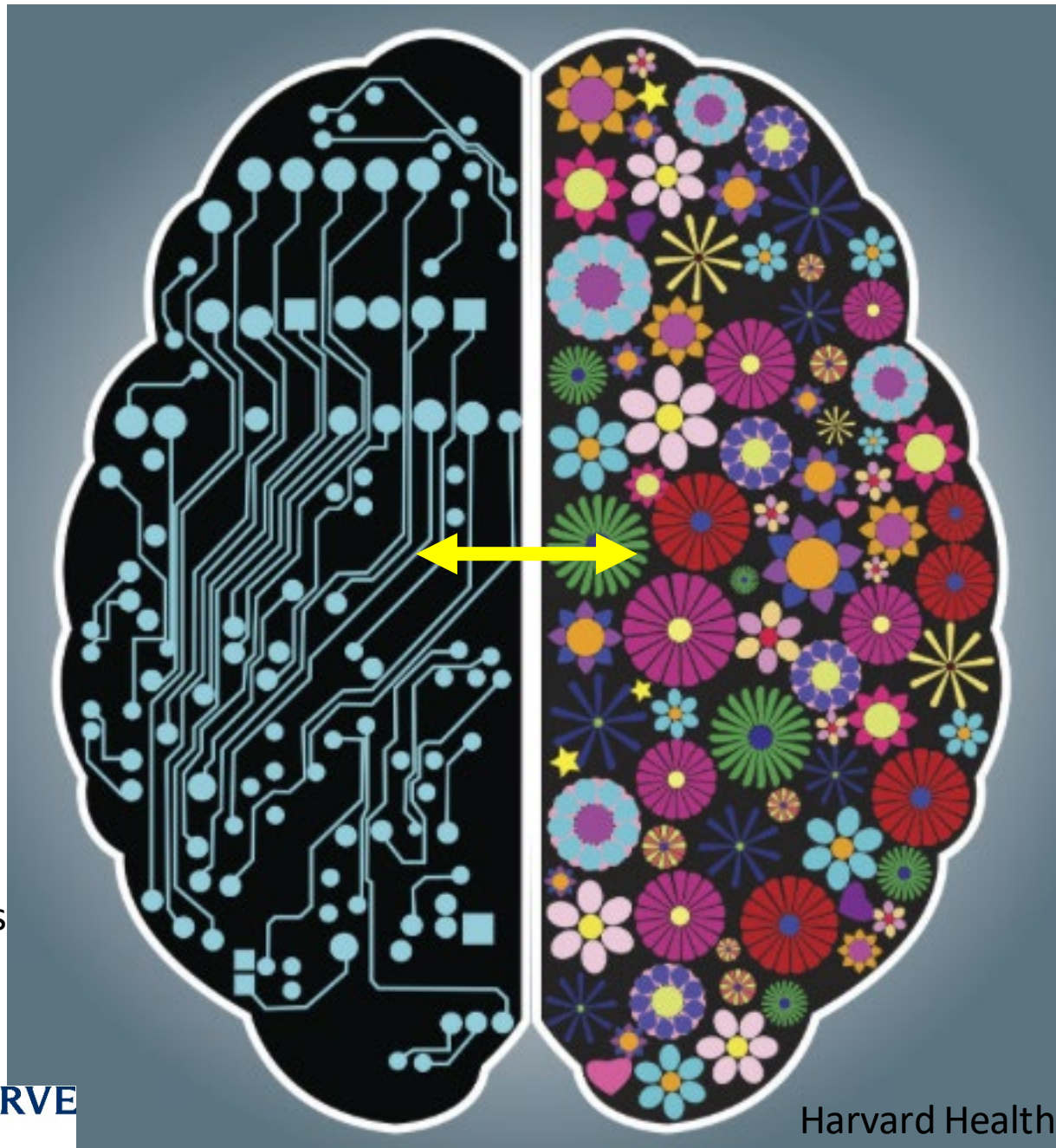
Google images, Plain Dealer



**CASE WESTERN RESERVE
UNIVERSITY**
School of Medicine

Biological mediators and pathways leading to cancer

Genetics
Epigenetics
Ancestry
Allosteric load
stress response
Norepinephrine
Cortisol
Obesity
Ingested and inhaled toxins
Reactive Oxygen
Inherited and acquired Mutations

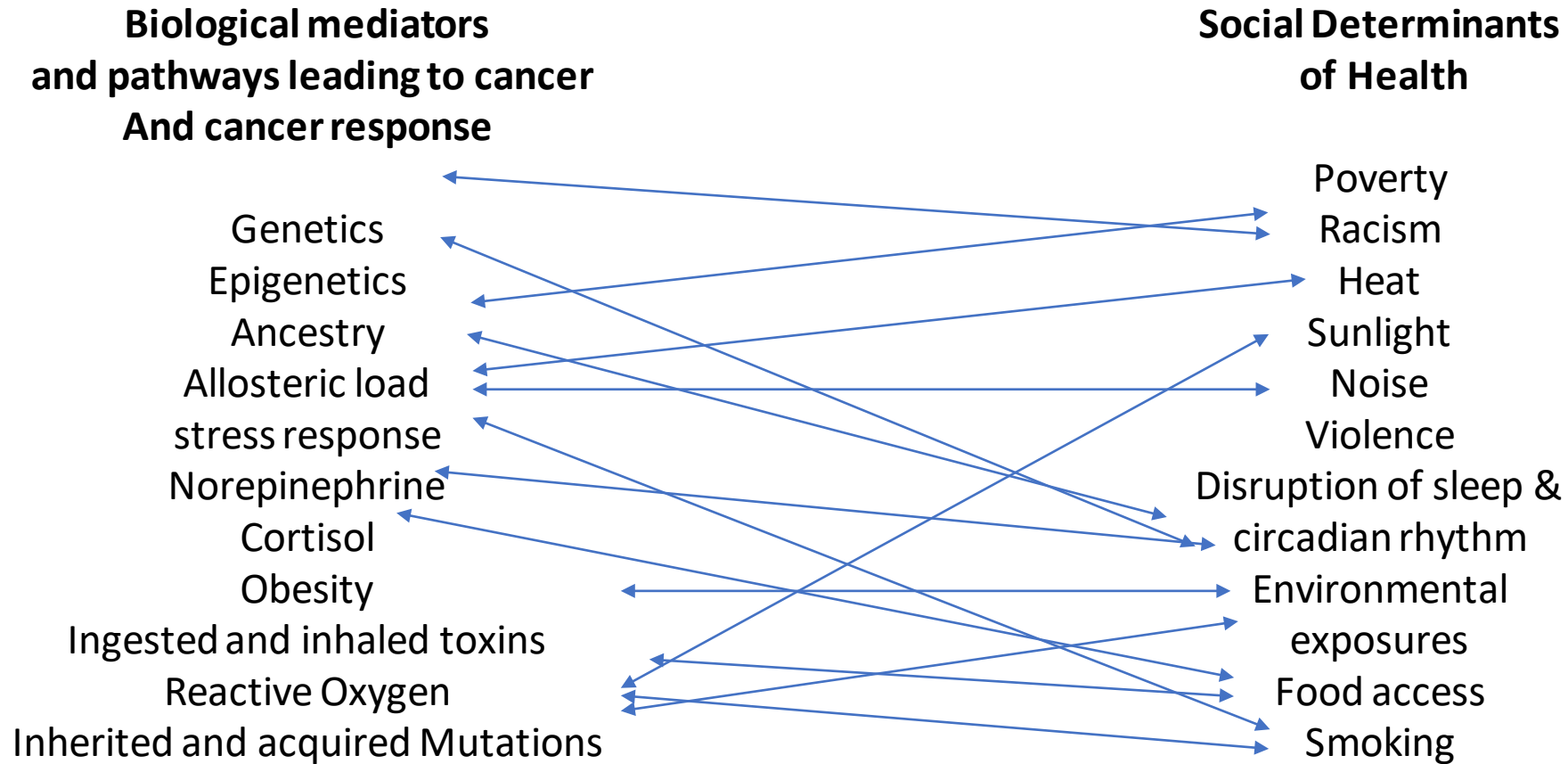


Social Determinants of Health

Poverty
Racism
Heat
Sunlight
Noise
Violence
Disruption of sleep &
circadian rhythm
Environmental
Exposures, plastics
Food access
Smoking



Connecting the drivers to plan interventions and policy changes



Adverse Effects of Chemical Exposures on Health Outcomes.

