

# THE TUGBOAT, TOWBOAT AND BARGE INDUSTRY

For the NAS Committee on Alcohol at Sea  
May 29, 2024

Caitlyn Stewart  
Vice President – Regulatory Affairs



**The American  
Waterways Operators**

*The Tugboat, Towboat & Barge Industry Association*

# ABOUT THE TUGBOAT, TOWBOAT AND BARGE INDUSTRY

- Moves nation's cargo on **rivers, coastal waters, Great Lakes**
- With **5,000 towing vessels** and over **33,000 barges**, the **largest segment** of the U.S.-flag domestic fleet
- Companies of all sizes, operating across the country



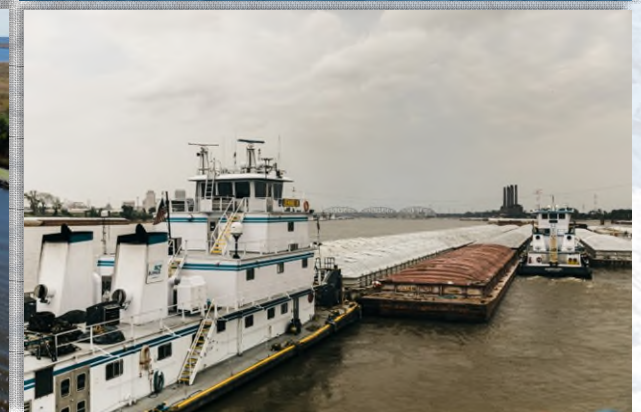
# ABOUT THE TUGBOAT, TOWBOAT AND BARGE INDUSTRY

- Safely, securely and efficiently moves **700 million tons of cargo** every year
- Supports **over 270,000 jobs** nationwide
- Contributes over **\$30 billion** to U.S. GDP annually



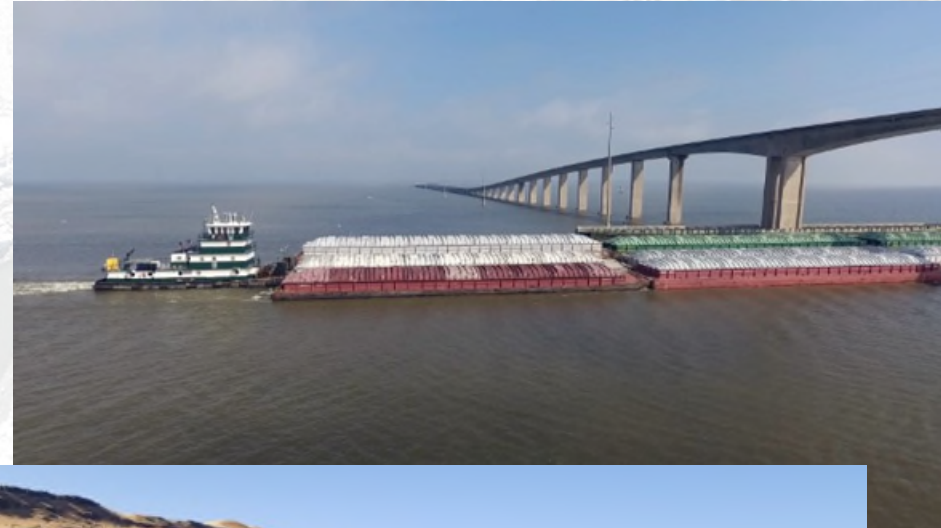
# WHAT THE INDUSTRY MOVES

- Fuel
- Building materials
- Agricultural Products
- Chemicals
- Manufactured Goods
- Military cargo
- Breakbulk cargo



# TOWBOATS

- Push barges



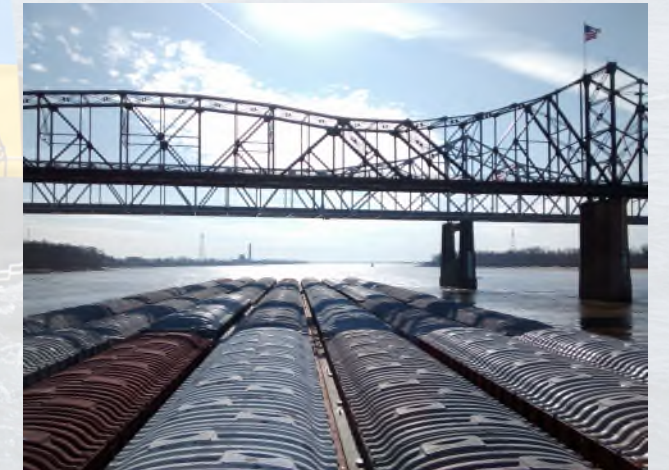
# TUGBOATS

- Pull barges on towline
- Dock larger ships (“ship-assist”)
- Articulated tug-barge units



# BARGES

- Carry cargo
- No propulsion
- Tank – liquid (fuel, chemicals)
- Hopper – dry (grain, asphalt)
- Deck – project cargo (cranes)



# THE SAFEST FREIGHT TRANSPORT MODE

## SAFER FOR THE PUBLIC

The tugboat, towboat and barge industry poses the lowest risk to the safety of the public compared to other forms of cargo transport.

### Average Annual Injuries to the Public

Freight Truck-104,286

Freight Railroad-7,962

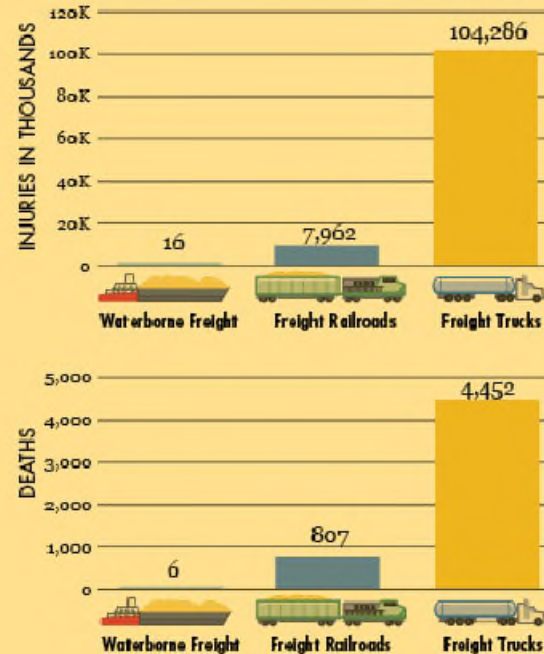
Waterborne Freight-16

### Average Annual Fatalities to the Public

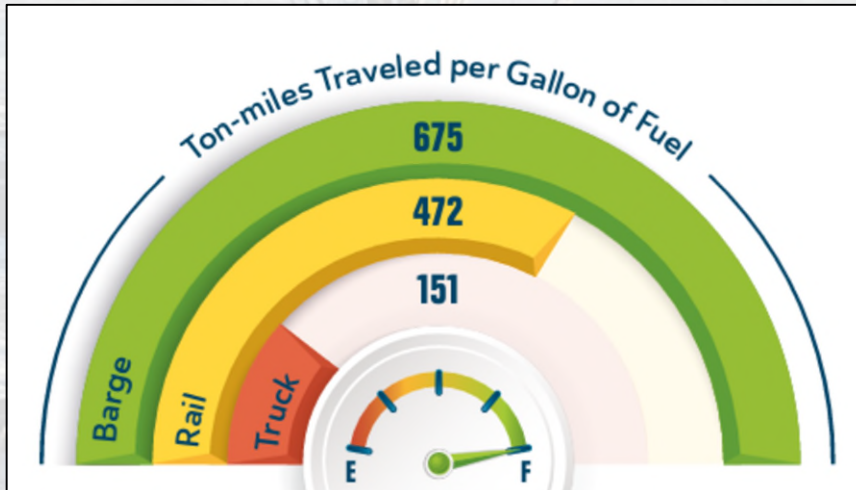
Freight Truck-4,452

Freight Railroad-807

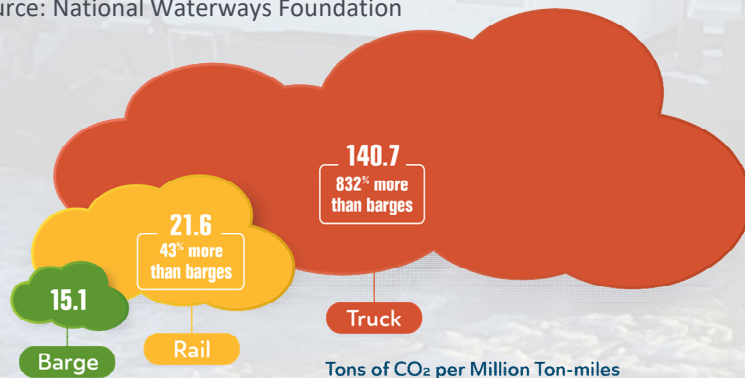
Waterborne Freight-6



# THE MOST SUSTAINABLE FREIGHT TRANSPORT MODE

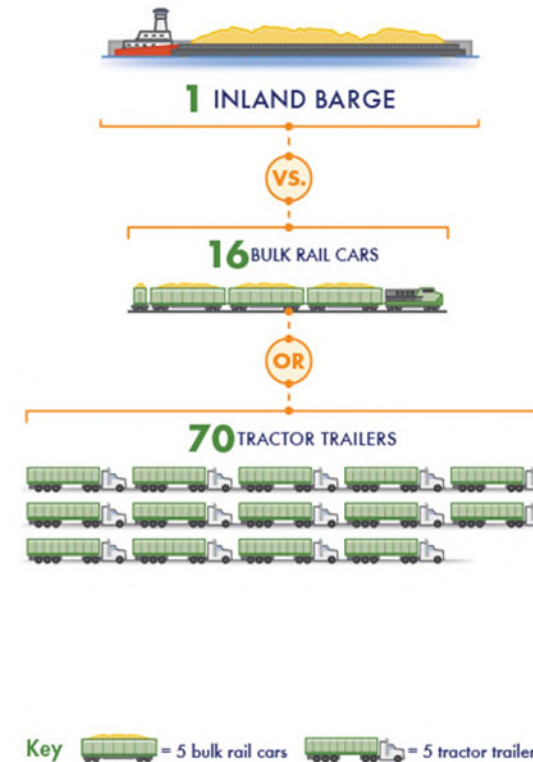


Source: National Waterways Foundation

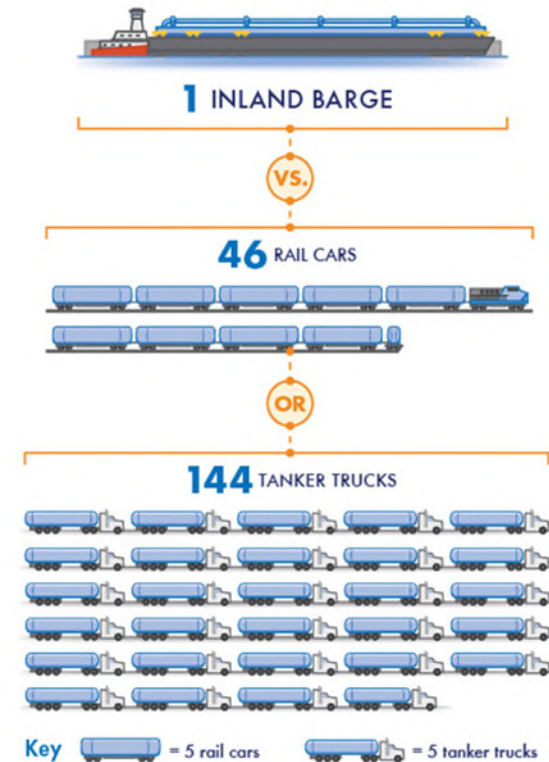


Source: National Waterways Foundation

Dry Cargo Transportation: 1,750 tons



Liquid Cargo Transportation: 27,500 BBL



Figures from Texas A&M Transportation Institute's Center for Ports and Waterways, "A Modal Comparison of Domestic Freight Transportation Effects on the General Public: 2001-2019", Jan. 2022

## OBSERVATIONS FOR THE NAS ALCOHOL AT SEA COMMITTEE

