

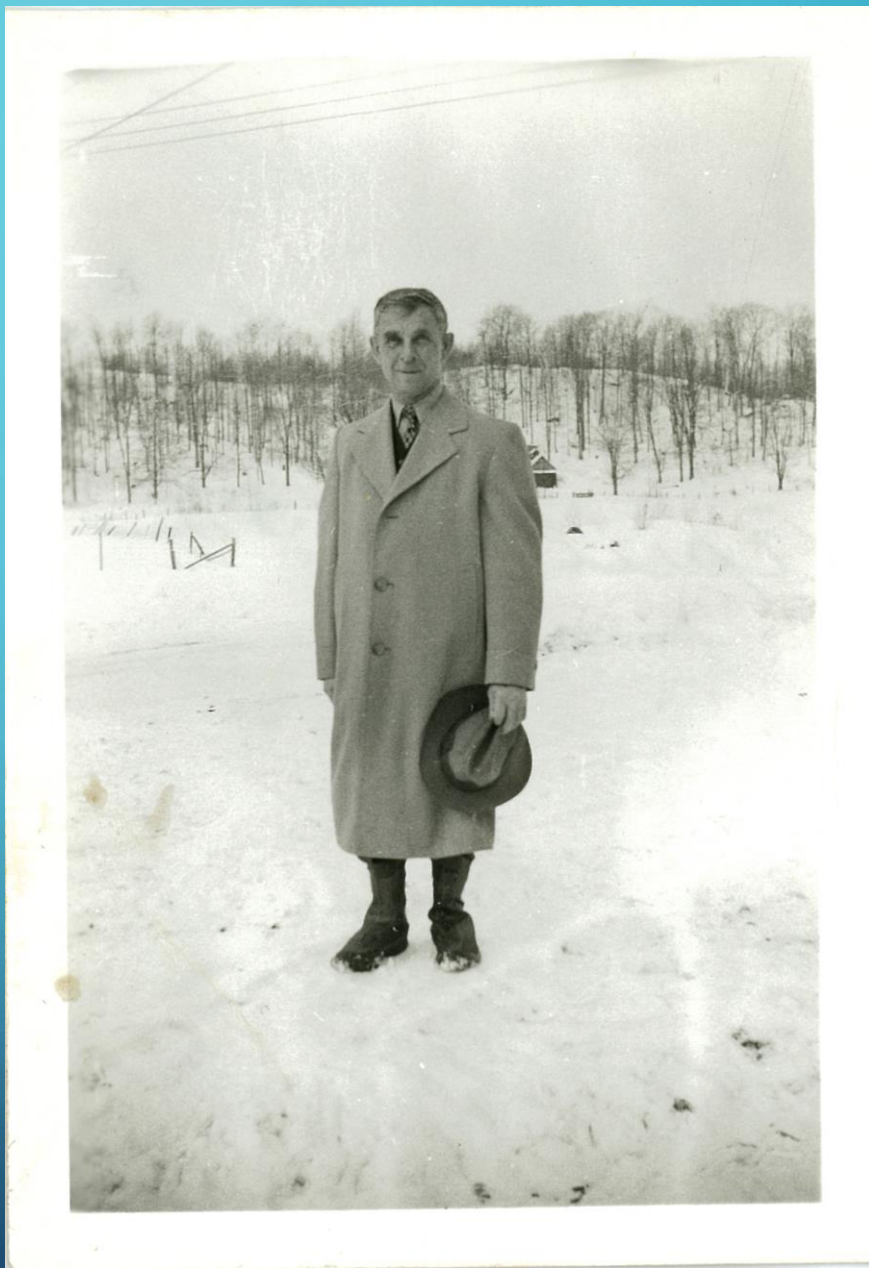


“THE WORKMEN’S COMPENSATION LAW IS A DIRECT SLAP IN THE FACE”

INDUSTRIAL MEDICINE, SAFETY ENGINEERING, AND THE
PROBLEM OF DISABLED WORKERS, 1910S-1940S

Sarah F. Rose
University of Texas at Arlington

FRANK SCOTT
IN THE 1940S
(ROSE FAMILY
COLLECTION)



BLIND WORKERS AT FORD IN 1934

