

Agricultural Soil Carbon Credits: Making sense of protocols for carbon sequestration and net greenhouse gas removals

Emily Oldfield, Agricultural Soil Carbon Scientist
Environmental Defense Fund



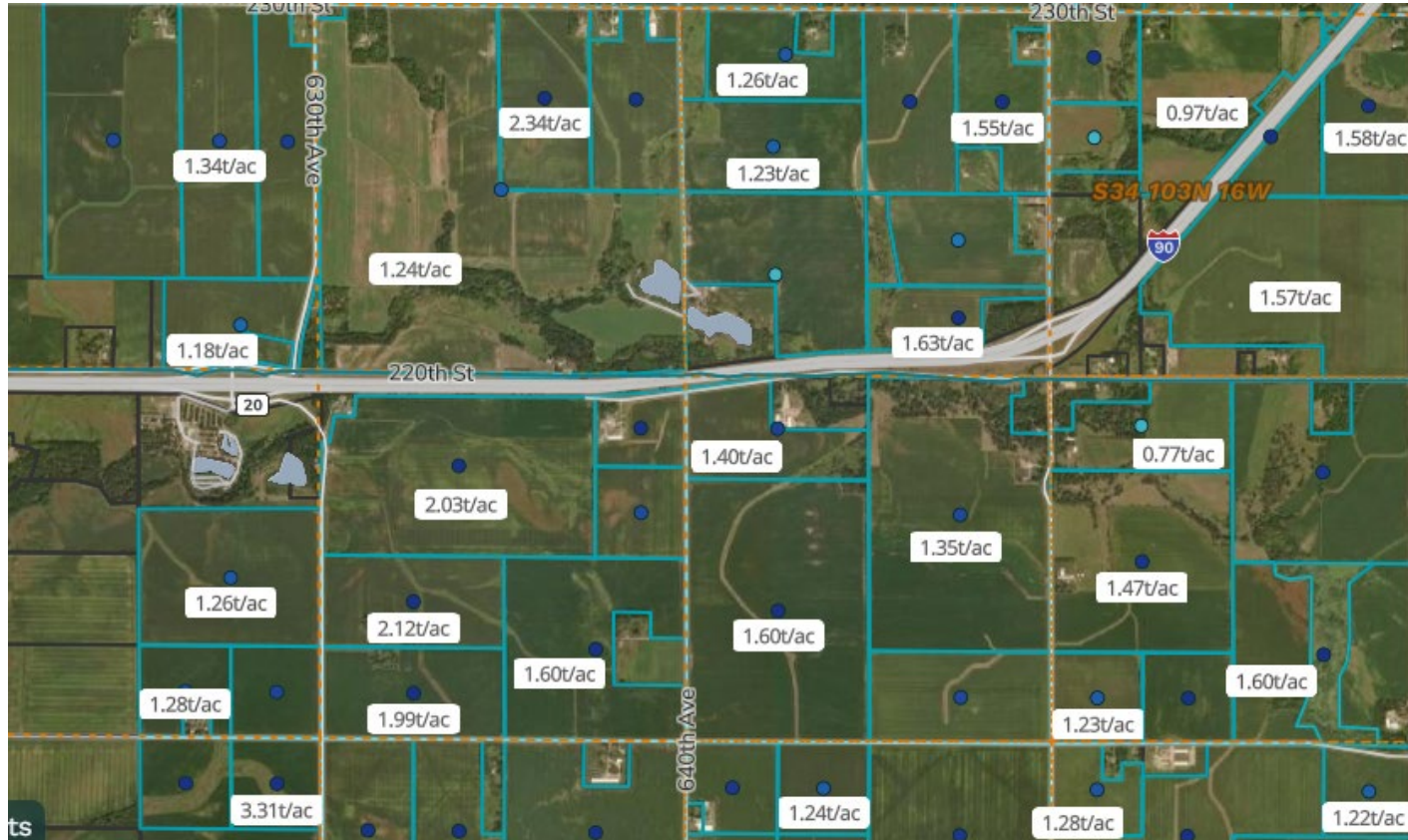
**Woodwell Climate
Research Center**



Today's Outline

- Context for our work
- Key findings
- Proposed solution

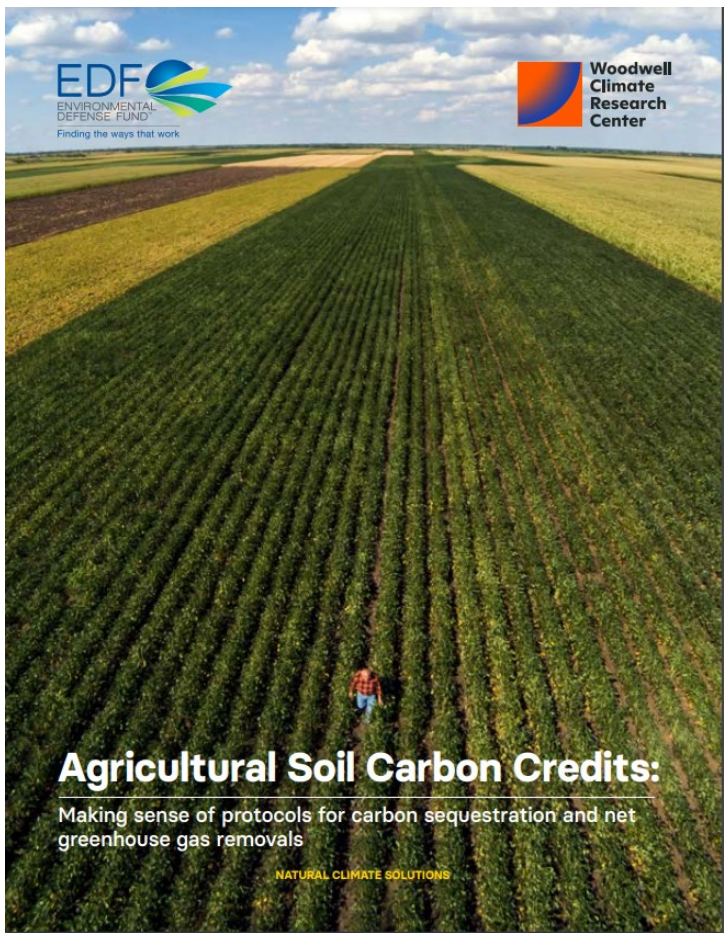
Rapidly expanding voluntary carbon market



Screen shot of CIBO's map estimating "regenerative potential": <https://www.cibotechnologies.com/cibo-insights/>

We reviewed 12 publicly available MRV protocols





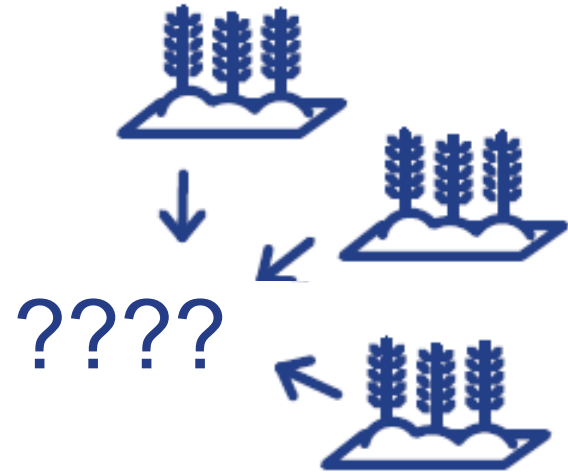
Goals of the report:

How are protocols measuring and estimating SOC sequestration and net GHG reductions?

How are protocols accounting for additionality, reversals, leakage, and permanence

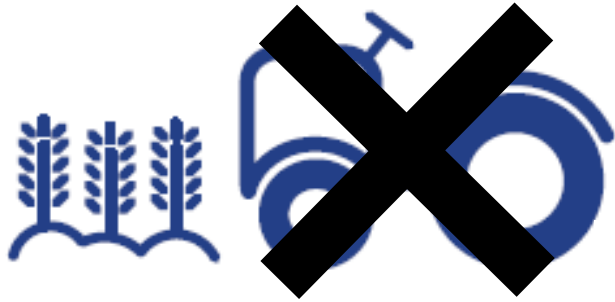
Protocols take different approaches to measuring soil carbon

1. Soil sampling
2. Modeling
3. Soil sampling + modeling
4. Remote sensing



Protocols take different approaches to additionality

Example: Protocols take different approaches to early adopters



Equivalency of credits?





CARBON MARKETS

Crediting agricultural soil carbon sequestration

Regional consistency is necessary for carbon credit integrity

Consistent measurement and standards are essential for realizing high-quality soil carbon credits

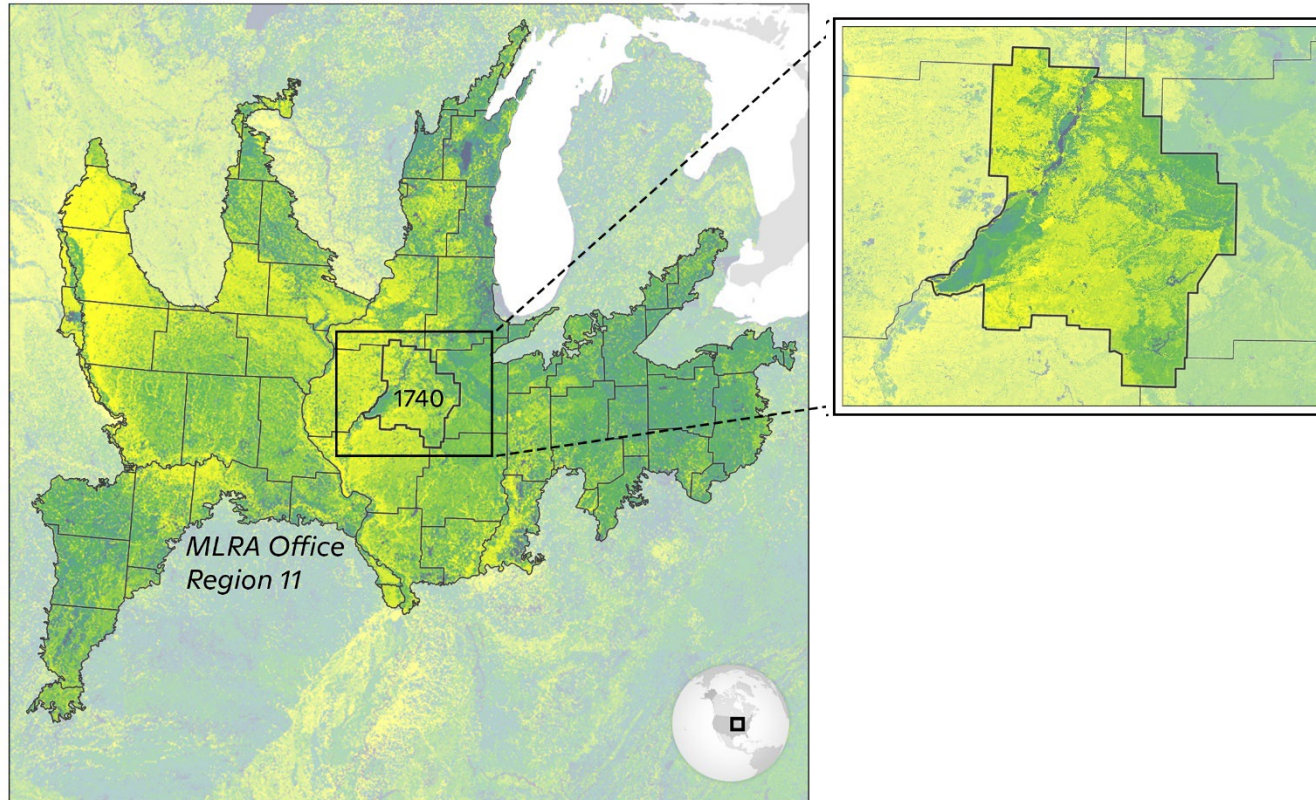


Image credit: Carl Churchill, Woodwell Climate Research Center

Thank you!