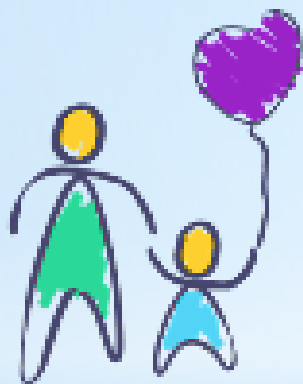




# Whole Kids Outreach



*Helping to meet the needs of children  
with complex medical problems*

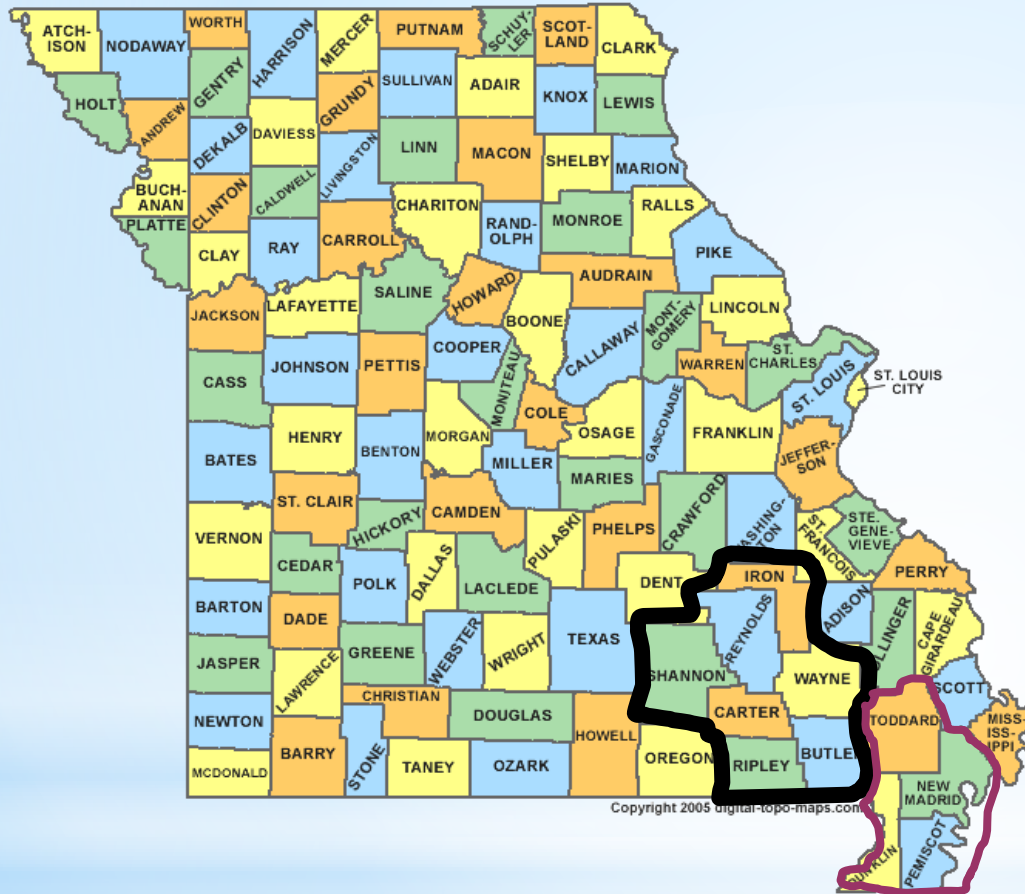


**Whole Kids Outreach** is a faith-based agency now in its **20<sup>th</sup> year** of helping families with young children who live in rural southeast Missouri.

**Whole Kids Outreach** provides services through home visit outreach and nursing programs as well as center-based programs at its site in Ellington, Missouri.



# Whole Kids Outreach Service Area

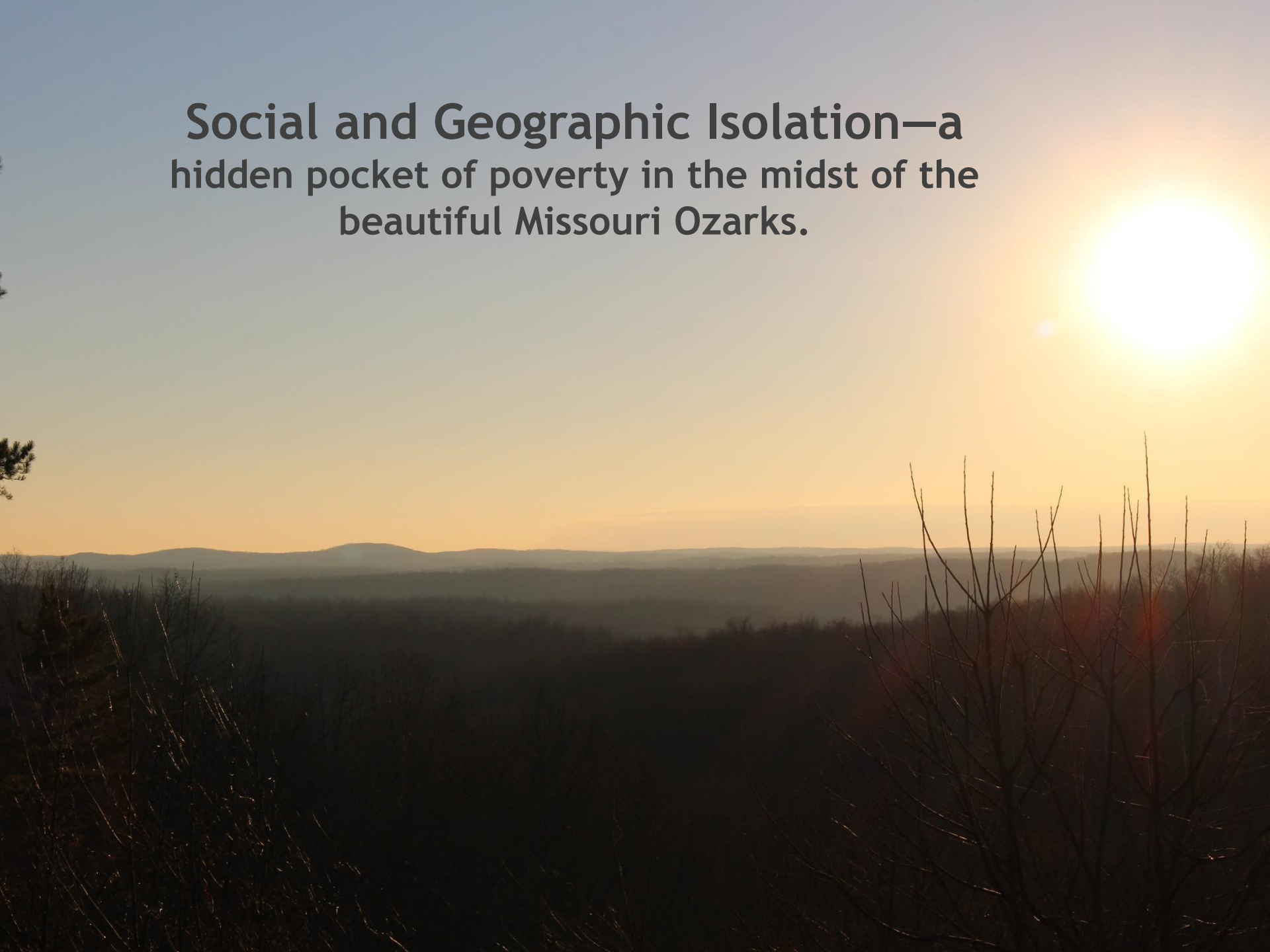


**We serve seven  
rural counties in  
southeast Missouri  
Butler, Carter, Iron,  
Reynolds, Ripley,  
Shannon  
and Wayne  
(~5000 square miles).**

Partnering with New Madrid County Family Resource Agency to cover: New Madrid, Pemiscot, Stoddard and Dunklin Counties for MO Home Visiting Program Services contract.



**Social and Geographic Isolation—a  
hidden pocket of poverty in the midst of the  
beautiful Missouri Ozarks.**

















# Context—Health Indices

Whole Kids Outreach: Heat Mapping of Community Risk Factors by County

		Butler County	Carter County	Iron County	Reynolds County	Shannon County	Wayne County	Region	MO
<b>Infant/Child Population</b>	<i>Number of Live Births<sup>1</sup></i>	580	93	91	61	94	157	1,076	75,244
	<i>Children aged 0 - 5<sup>3</sup></i>	3,316	458	755	389	559	921	6,398	455,297
Risk Category (Year of Published Data)		Target Population Affected							
		Butler	Carter	Iron	Reynolds	Shannon	Wayne	Region	MO
<b>Child Maltreatment (2014)</b>	Number of Child Abuse and Neglect Reports <sup>4</sup>	689	74	152	110	153	167	1345	68,234
	<i>Child Abuse and Neglect Assessment (% of reports)<sup>4</sup></i>	52.8	40.5	49.3	50.9	58.8	49.1	51.8	52.9
	<i>Substantiated Incidents of Child Abuse &amp; Neglect (Rate per 1000)<sup>4</sup></i>	4.3	3.2	3.3	4.8	2.6	4.8	4.1	2.9
<b>Maternal Health (2013)</b>	Inadequate Prenatal Care (%) <sup>1</sup>	22.9	17.4	24.1	27.1	20.9	30.0	23.6	18.6
	Smoked During Pregnancy (%) <sup>1</sup>	29.0	24.7	35.2	32.8	28.7	35.0	30.2	17.5
	Prenatal Mothers Overweight 20% or More (%) <sup>1</sup>	43.7	40.7	47.2	45.0	39.8	42.5	43.3	41.6
	Births to Teen Mothers, Age 15 – 19 (rate per 1,000) <sup>1</sup>	58.5	66.3	46.7	29.1	63.9	58.0	56.1	30.2
	Repeat Births to Mothers Under 20 (%) <sup>1</sup>	20.8	15.4	28.6	40.0	5.9	20.0	19.9	17.2
	Mothers Less than 12 Years Education (%) <sup>1</sup>	25.2	23.7	15.4	16.4	19.2	16.6	21.9	14.4
	Births Spacing Less than 18 Months (%) <sup>1</sup>	8.5	16.1	7.7	3.3	11.7	8.3	9.0	6.7
<b>Domestic Violence (2013)</b>	Domestic Violence Incidents (rate per 100,000) <sup>5</sup>	564.5	319.3	348.6	194.8	133.7	239.0	404.1	662.0
<b>Infant Health (2013)</b>	Pre-term Births (%) <sup>1</sup>	22.6	18.3	11.0	23.0	14.9	15.9	19.6	11.5
	Low Birth Weight Babies (%) <sup>1</sup>	12.9	9.7	7.7	8.2	11.7	10.8	11.5	8.0
	Rate of Infant Deaths (per 1,000; avg. across 2009-2013) <sup>2</sup>	5.7	8.2	5.7	10.5	11.0	11.0	7.4	6.5
<b>Poverty (2012)</b>	Families in Poverty with Children Under Age 5 (%) <sup>6</sup>	43.3	64.2	28.3	24.2	18.5	39.9	39.4	20.6
	Children Receiving SNAP (%) <sup>2</sup>	58.6	57.2	57.6	52.6	57.8	59.5	58.0	48.5
	Children Receiving Cash Assistance (%) <sup>2</sup>	7.8	4.3	6.8	5.2	6.7	6.6	7.0	5.8
	Children under 6 in Poverty (%) <sup>2</sup>	32.6	31.8	54.9	43.9	50.1	46.0	45.4	26.3

<sup>1</sup><http://health.mo.gov>. 2013

<sup>2</sup><http://datacenter.kidscount.org>. 2012-2013

<sup>3</sup>[mcdc.missouri.edu](http://mcdc.missouri.edu). 2013

<sup>4</sup>Missouri Department of Social Services, Children's Division. *Child Abuse and Neglect in Missouri* <http://dss.mo.gov/re/canar.htm>. 2014

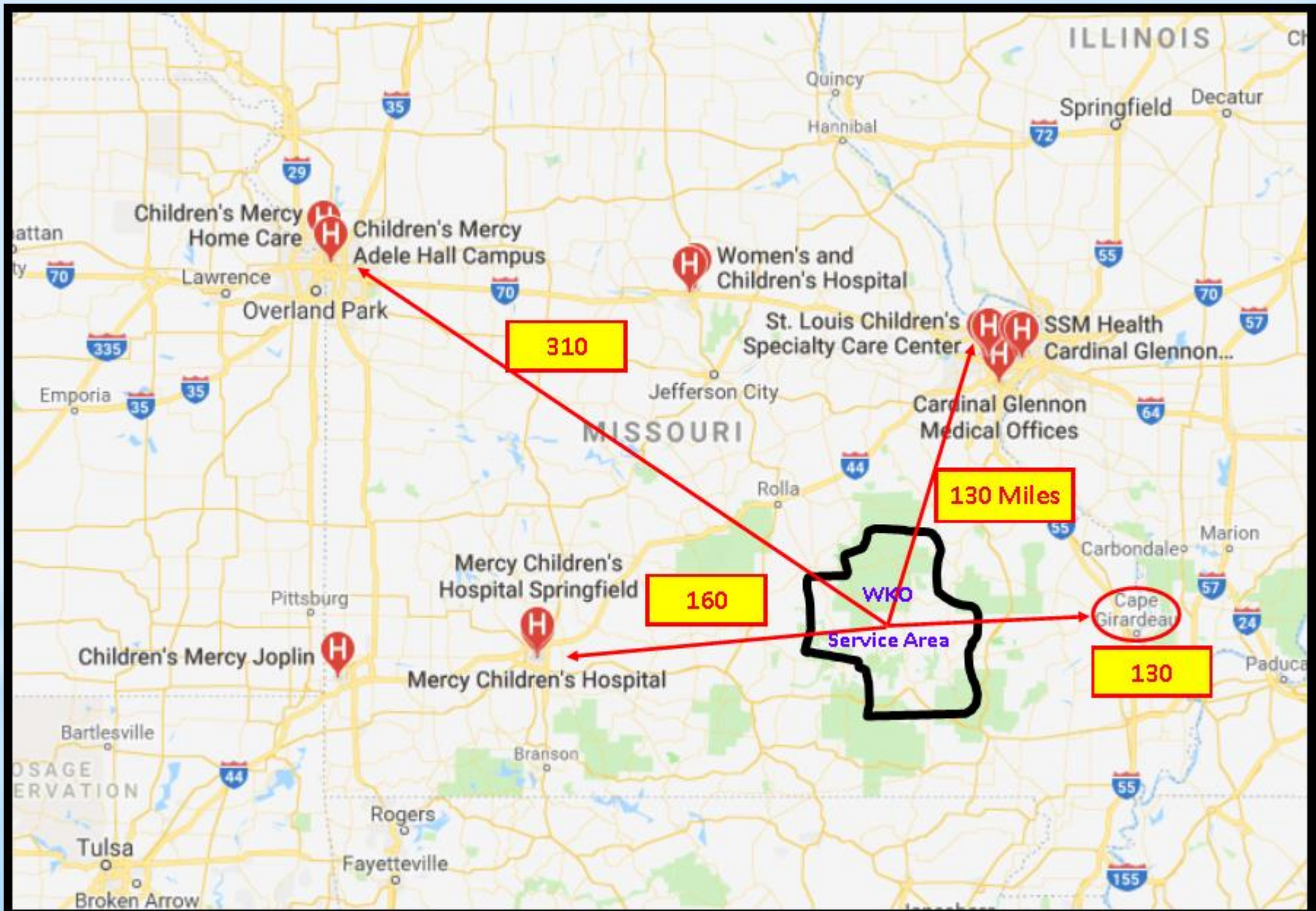
<sup>5</sup>Missouri State Highway Patrol, Statistical Analysis Center. *Crime in Missouri 2013*.

[http://www.mshp.dps.missouri.gov/MSHPWeb/SAC/index\\_960grid.html](http://www.mshp.dps.missouri.gov/MSHPWeb/SAC/index_960grid.html)

<sup>6</sup> <http://factfinder.census.gov/>

200% higher rate than MO	50% higher rate than MO	Higher rate than MO	Lower rate than MO
--------------------------	-------------------------	---------------------	--------------------

## Access to Pediatric Specialty Care





# ***Prevention—Home Visiting Programs***

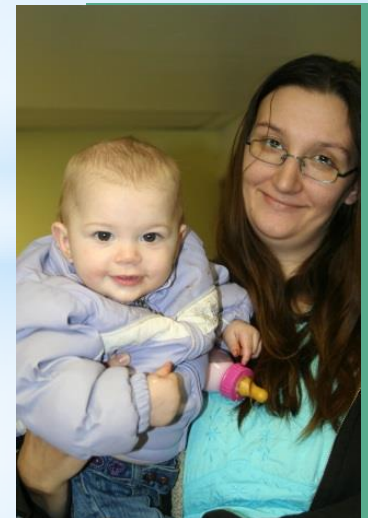
## **Healthy Families America Program**



## **Maternal-Child Nursing Program**



## **Parents as Teachers Program**

















# **Broadening the Scope** of Prevention Activities... addressing the **Social Determinants of Health**

Teaching Parents the value of Education

Assisting Parents to Contribute to Their  
Communities—Volunteering

Increasing Health Literacy

Teaching Employment Skills



***Move Closer to  
Services***





***Medical Foster Home  
&  
Family Reunification***





## *Medical Foster Home/Adoption*



***Unsuccessful  
Medical Foster Home/Adoption***





- 🌸 ***Cognitive Delay—Mom and child***
- 🌸 ***Selective Mutism at 6 yrs. old after murder of one family member by another***
- 🌸 ***Pregnant at 15 yrs. old***
- 🌸 ***New boyfriend beat her child & is now in prison***
- 🌸 ***Pregnant with new boyfriend's child.***







***Increase Parents' health literacy & networking skills***





## *The Community Rallies*





# Partnering with Universities

**Provides WKO with cutting edge information in the field.**



**SAINT LOUIS UNIVERSITY**  
COLLEGE FOR  
**PUBLIC HEALTH &  
SOCIAL JUSTICE**

[PUBLICHEALTH.SLU.EDU](http://PUBLICHEALTH.SLU.EDU)

**Provides Universities a means to do research and place interns**



**WINONA**  
STATE UNIVERSITY

**Funding Opportunities for both**

**Current MFH Adapting HFA to rural Missouri**

# Center-based Programs

**Camp Whole Kids**

**Riding Program**

**Youth Volunteer Program**

**Children's  
weekends program**

**Moms' Day Out, Parent  
Cafés, PAT Parent  
Gatherings**

**Community Events**

**Water Safety Lessons**







**Community Gatherings** help to decrease social isolation, bring families together, and provide fun activities that many would not otherwise be able to afford.



Whole Kids  
Outreach





## Youth Volunteers!



Whole Kids  
Outreach





## Riding Program







## Water Safety Lessons





# Child-Animal Relationships

*“Animal abuse cases can expose family violence.*

*If an animal is being abused in a family, it is likely that a child or other family members are also being hurt or threatened.”*



**FIRST STRIKE:**  
*The Violence*  
**CONNECTION**

*“When animal cruelty co-occurs with spousal or child abuse, the abuser may use violence against animals as a means of further terrorizing his or her human victims.”*













*...and the need goes on*

